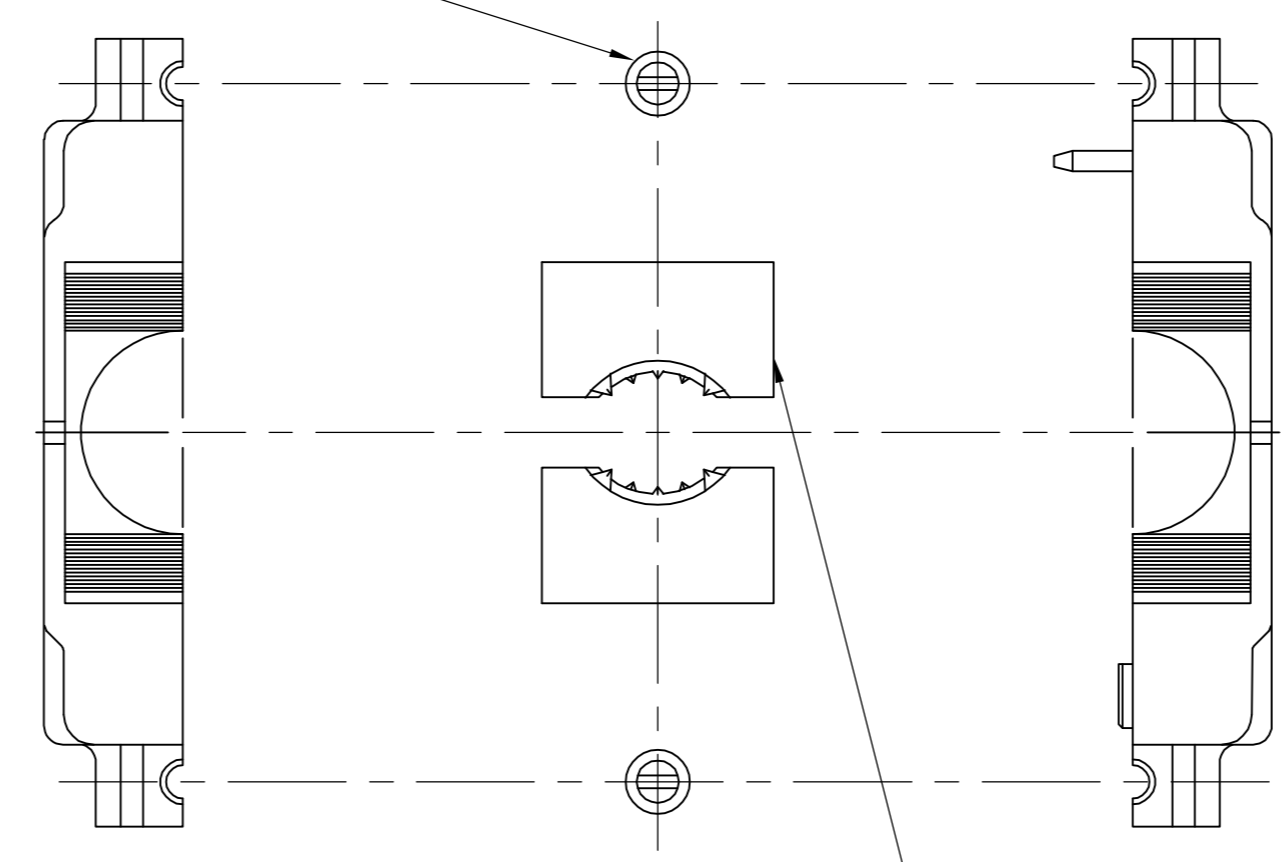
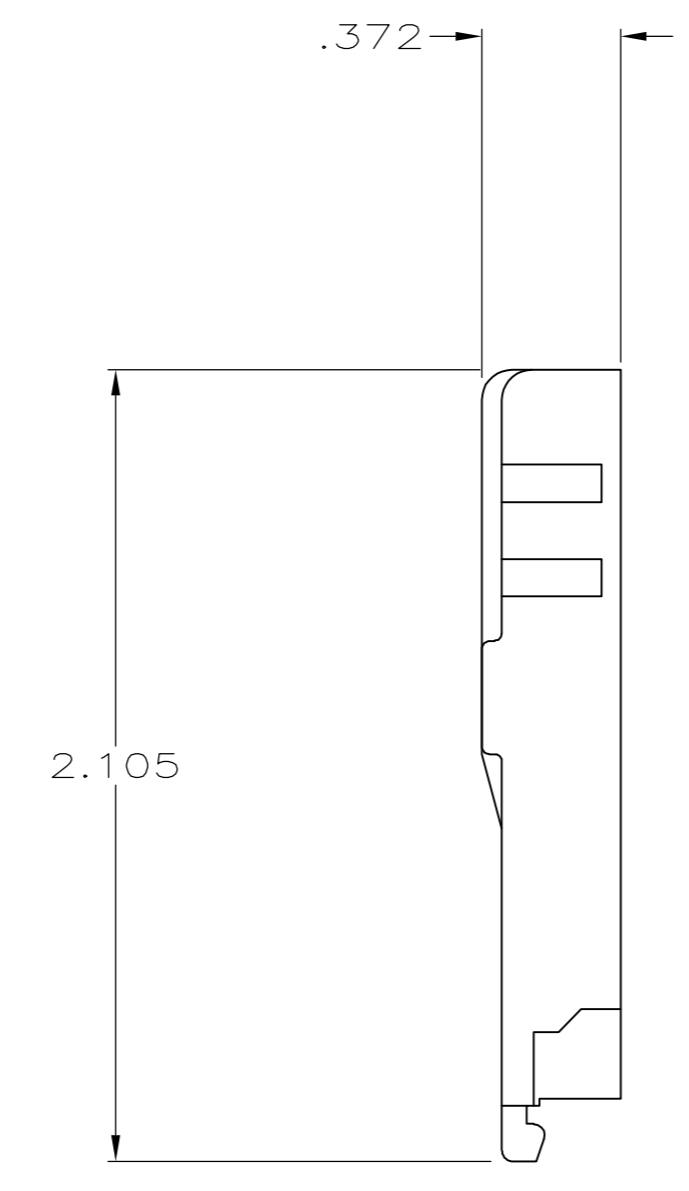


MOUNTING SCREW, STEEL
 TYPICAL (2)



CABLE CLAMP WEDGE SET, QUANTITY: 2
 ONE SET FOR .190 DIA TO .380 DIA
 CABLE AND ONE SET FOR .380 DIA
 TO .530 DIA CABLE



CABLE CLAMP
 HALF, QUANTITY: 2

25 POSITION AMPLIMITE
 CONNECTOR, SHOWN REFERENCE ONLY

- ALL PARTS ARE PACKAGED UNASSEMBLED.
 - PARTS PACKAGED AS A UNIT KIT.
 - PARTS INDIVIDUALLY BULK PACKED AND SHIPPED AS A UNIT PACKAGE.
- 4 MOLDED PARTS: ABS MOLDING COMPOUND, COLOR BLACK.
 SCREWS: STEEL.
- 5 SCREWS: ZINC PLATED CLEAR CHROMATE COATED.

5747824-1
 PART
 NUMBER

| | | | | |
|--|-------------|---------------------------------|--------------------|---|
| THIS DRAWING IS A CONTROLLED DOCUMENT. | | DWN R. RICHARDSON 15SEP05 | | Tyco Electronics Corporation Harrisburg, PA 17105-3608 |
| DIMENSIONS: INCHES | | CHK C. ROHDE 15SEP05 | | APVD M. WALMSLEY 15SEP05 |
| TOLERANCES UNLESS OTHERWISE SPECIFIED: | | APPLICATION SPEC | | |
| 0 PLC ± - 1 PLC ± - 2 PLC ± - 3 PLC ± .005 4 PLC ± - ANGLES ± - | | RESTRICTED TO | | |
| MATERIAL 4 | FINISH 5 | WEIGHT - | A1 00779 C=5747824 | |
| CUSTOMER DRAWING | | SCALE 2:1 | SHEET 1 of 1 | REV 0 |