

Distributed by:

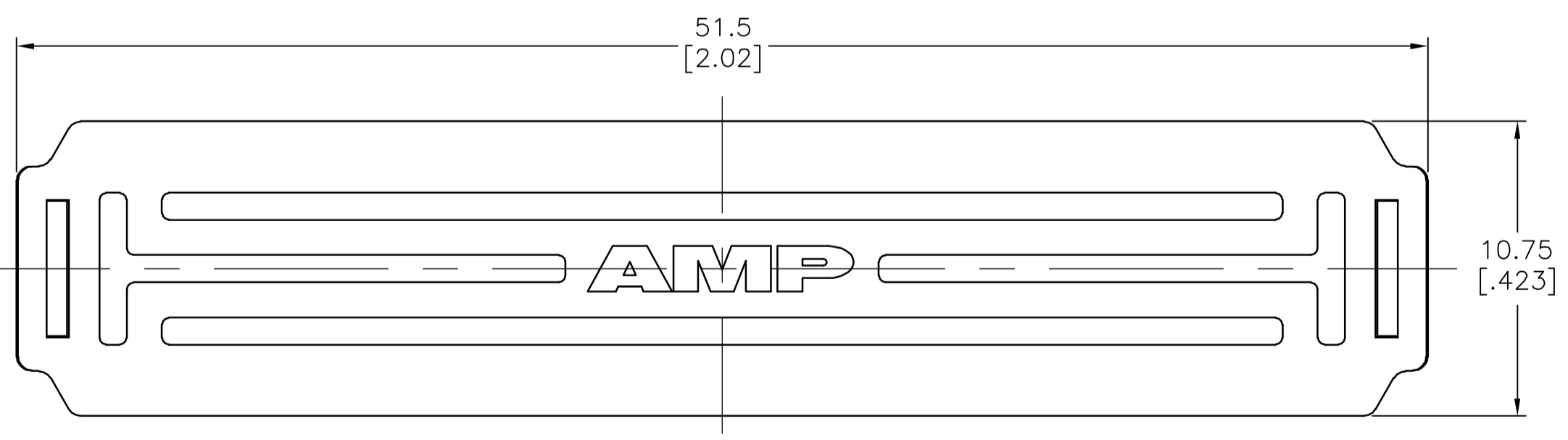
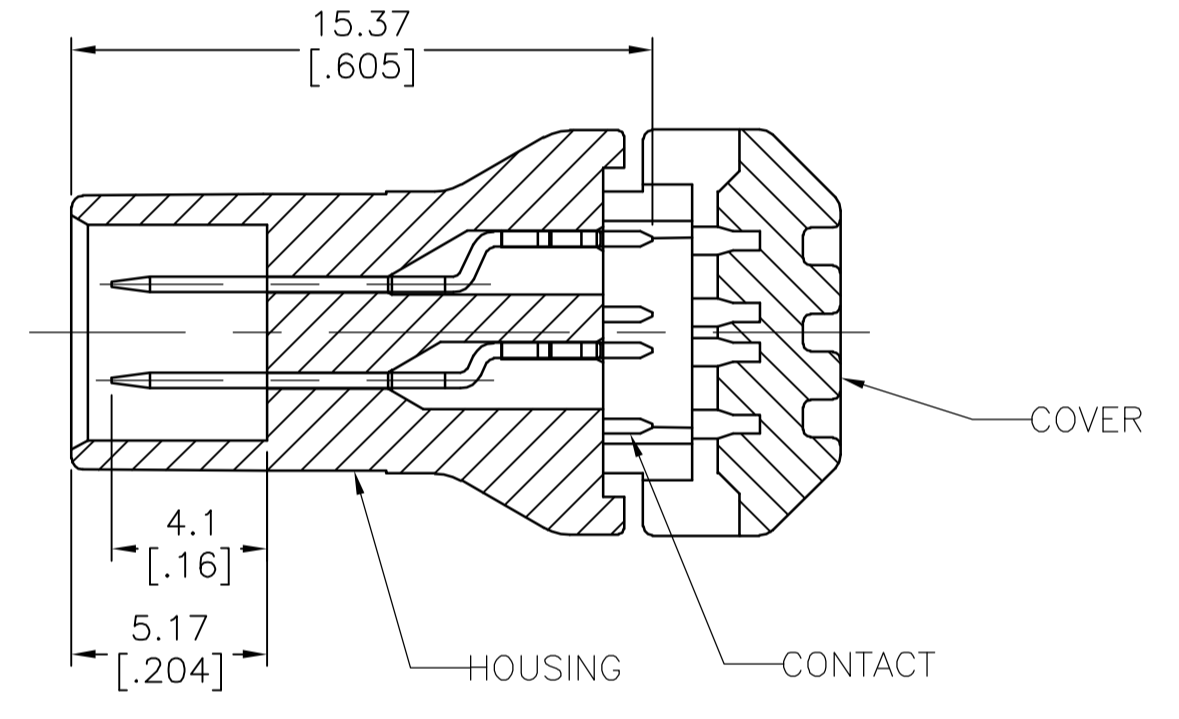
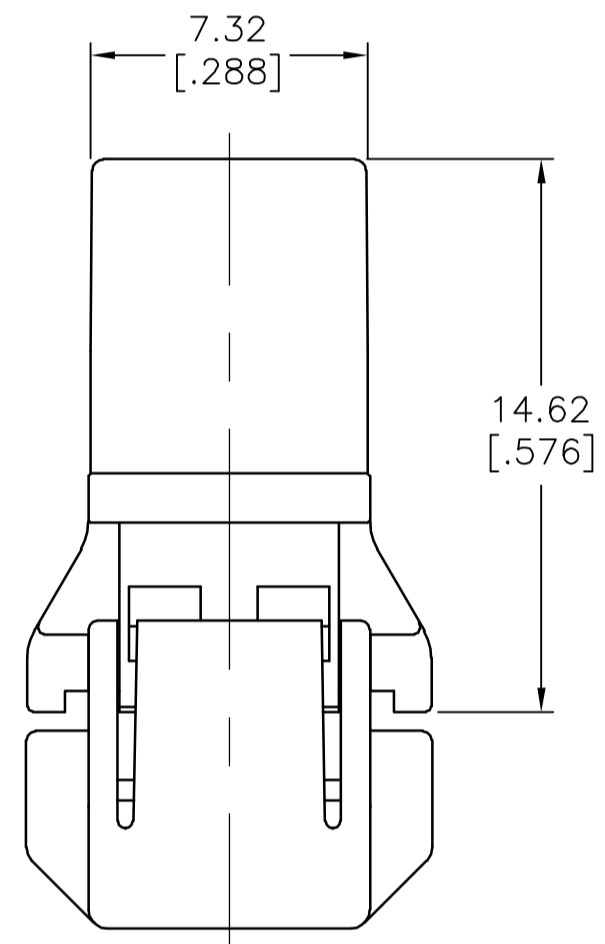
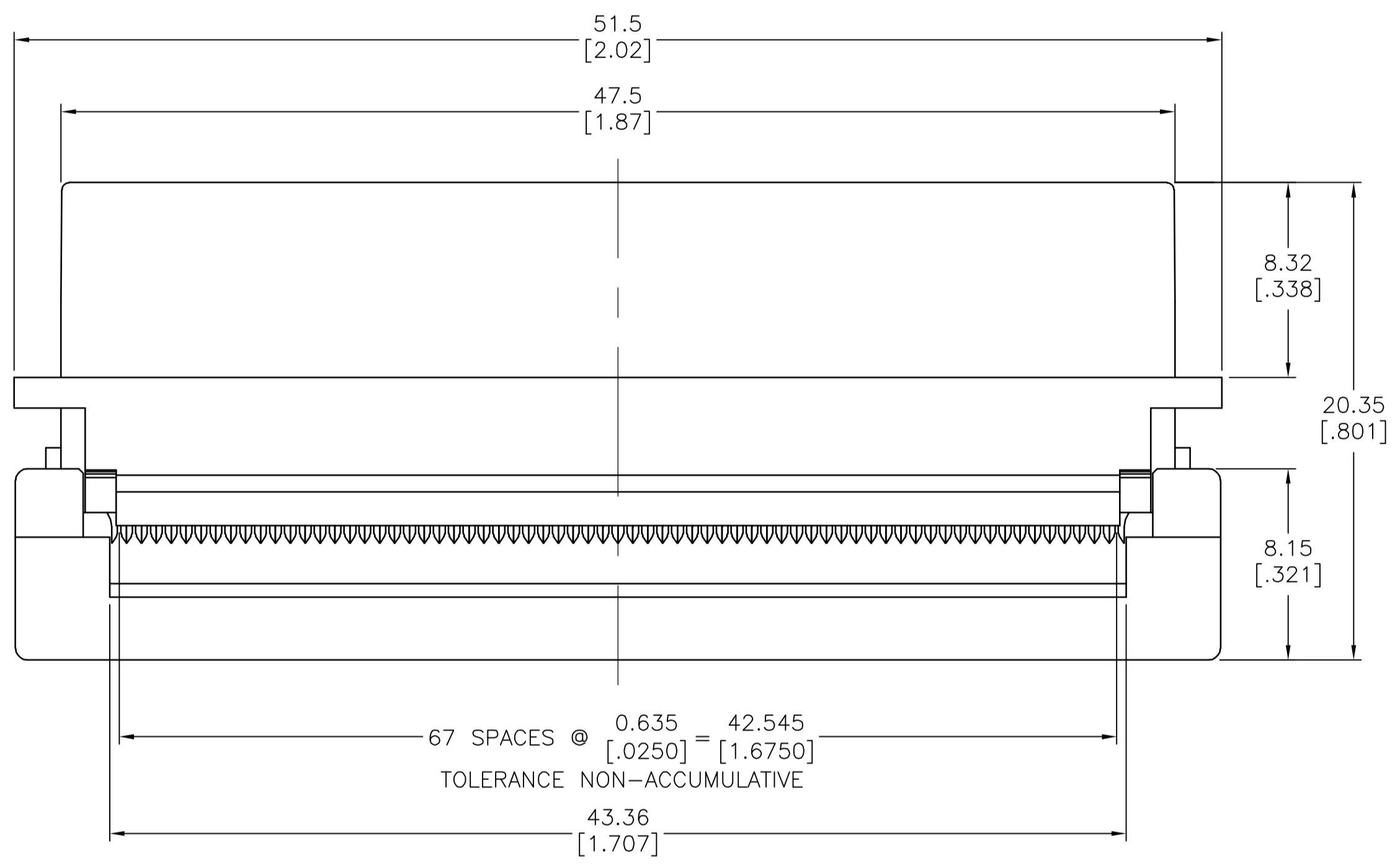
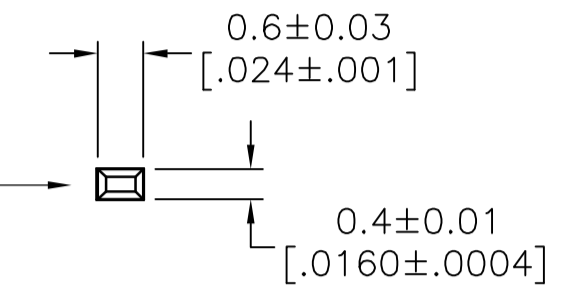
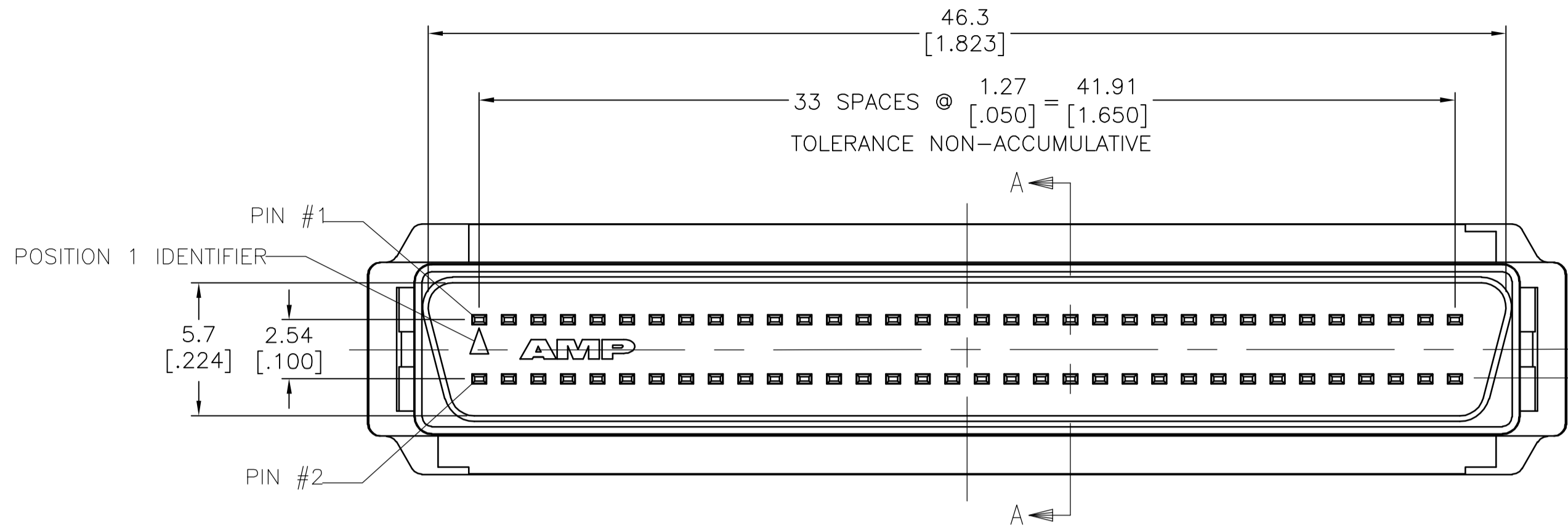
JAMECO[®]
ELECTRONICS

www.Jameco.com ♦ 1-800-831-4242

The content and copyrights of the attached
material are the property of its owner.

Jameco Part Number 961522

LOC		DIST		REVISIONS			
GP	00	REV	DATE	BY	APPV		
		01	REVISED PER EC 0513-0253-05	13DEC05	BL	JG	



- △ HOUSING & COVER: PBT 30% GLASS FILLED, UL 94V-0 RATED, COLOR BLACK. CONTACTS: PHOSPHOR BRONZE.
- △ CONTACTS: 0.00076[.000030] MIN GOLD ON MATING END, 0.00127[.000050] MIN TIN ON TERMINATION END, ALL OVER 0.00127[.000050] MIN NICKEL ON ENTIRE CONTACT.
- △ CONTACTS: 0.00038[.000015] MIN GOLD ON MATING END, 0.00127[.000050] MIN TIN ON TERMINATION END, ALL OVER 0.00127[.000050] MIN NICKEL ON ENTIRE CONTACT.
- 4. RECOMMENDED WIRE: #30 AWG AND #31 AWG STRANDED OR SOLID RIBBON CABLE. CONTACT TYCO ELECTRONICS ENGINEERING FOR APPROVED CABLES.
- 5. DIMENSIONS SHOWN ARE FOR 68 POSITION ASSEMBLY.

OBSOLETE	TUBE	△	68	1-5786090-7
	TUBE	△	68	5786090-7
	PACKAGING	CONTACT FINISH	NO OF POS	PART NUMBER

THIS DRAWING IS A CONTROLLED DOCUMENT.		DWG	L. VARELA - DOCKS	02-18-05	Tyco Electronics Corporation Harrisburg, PA 17105-3608	
DIMENSIONS: mm [INCHES]		CHK	S. BOLASH	02-18-05		
TOLERANCES UNLESS OTHERWISE SPECIFIED:		APPD	M. WALMSLEY	02-18-05	Tyco Electronics Corporation Harrisburg, PA 17105-3608	
0 PLC ± -		NAME	M. WALMSLEY			
1 PLC ± 0.35[.014]		PRODUCT SPEC	PLUG ASSEMBLY, UNSHIELDED, 0.635[.025] CENTERLINE, 1.27[.050] SERIES, AMPLIMITE			
2 PLC ± 0.25[.010]		APPLICATION SPEC	-			
3 PLC ± 0.15[.006]		SIZE	A1	00779	DRAWING NO	RESTRICTED TO
4 PLC ± -		WEIGHT	-	-	SCALE	1:1
ANGLES ± -		CUSTOMER DRAWING	-		SHEET	1 OF 1
FINISH SEE TABLE		SCALE		1:1	REV 01	