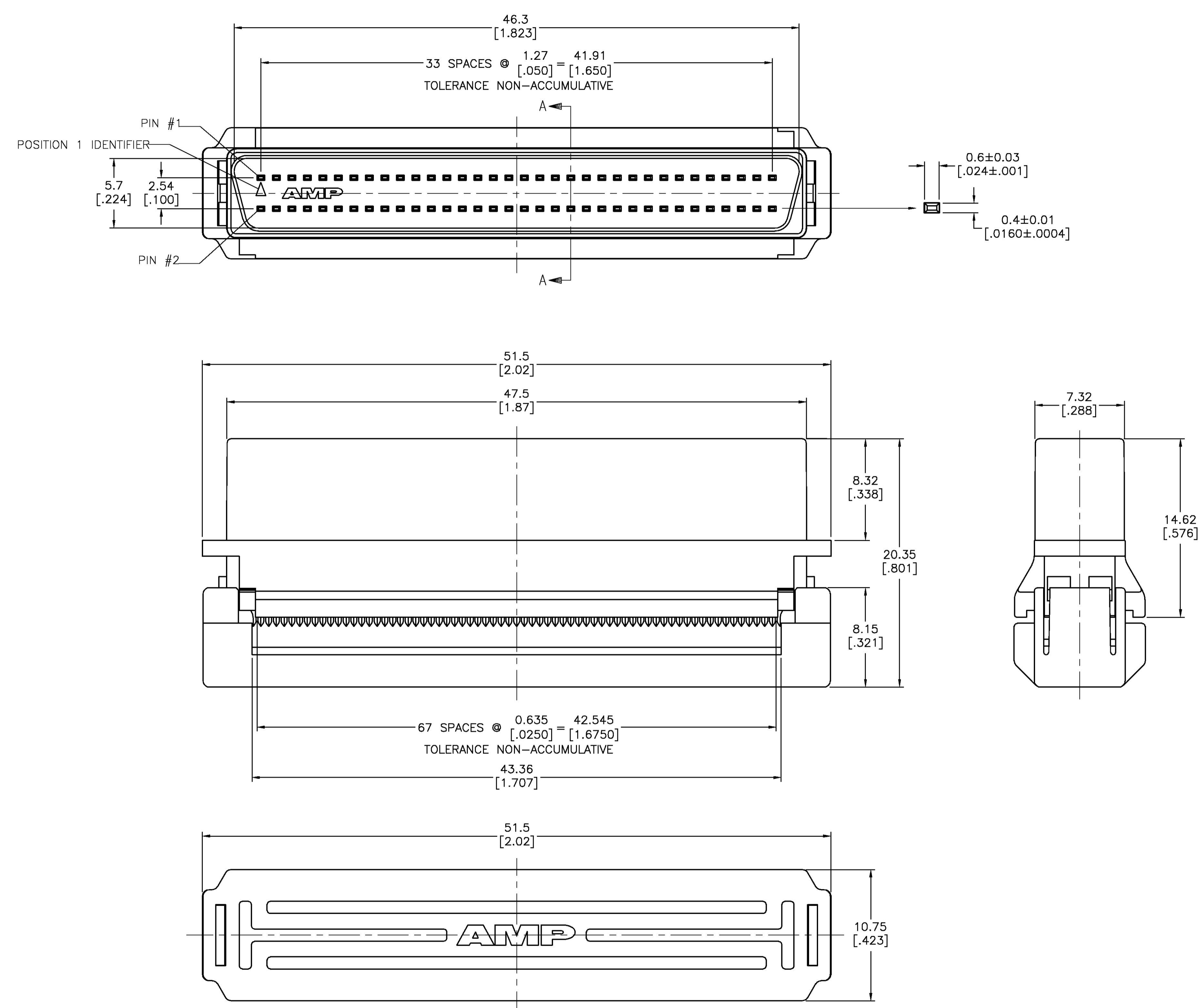
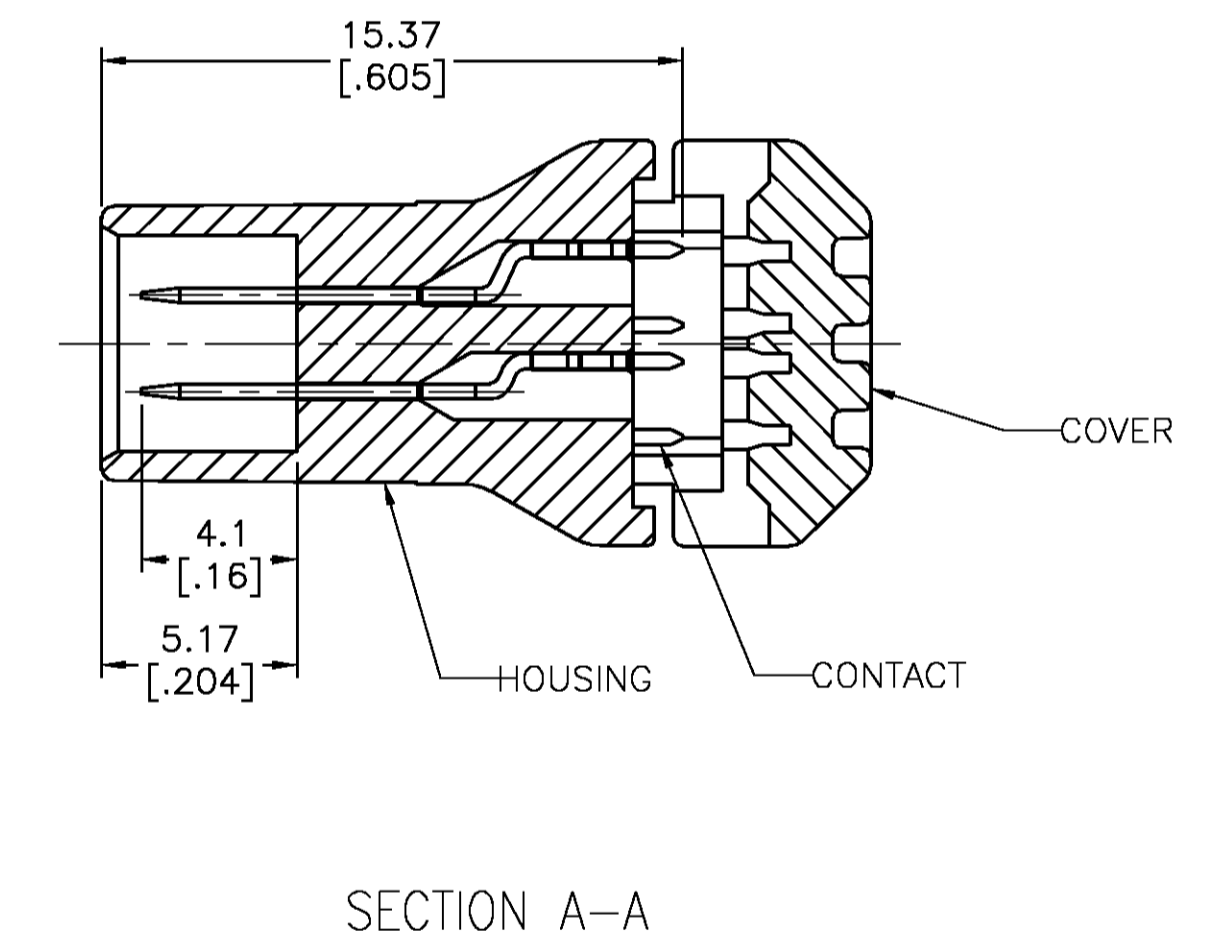


LOC		DIST		REVISIONS			
P	LTR	DESCRIPTION	DATE	DMN	APVD		
0		RELEASED PER EC 0513-0007-05	02-18-05	LV	JG		



- △ HOUSING & COVER: PBT 30% GLASS FILLED, UL 94V-0 RATED, COLOR BLACK. CONTACTS: PHOSPHOR BRONZE.
- △ CONTACTS: 0.00076[.000030] MIN GOLD ON MATING END, 0.00127[.000050] MIN TIN ON TERMINATION END, ALL OVER 0.00127[.000050] MIN NICKEL ON ENTIRE CONTACT.
- △ CONTACTS: 0.00038[.000015] MIN GOLD ON MATING END, 0.00127[.000050] MIN TIN ON TERMINATION END, ALL OVER 0.00127[.000050] MIN NICKEL ON ENTIRE CONTACT.
- 4. RECOMMENDED WIRE: #30 AWG AND #31 AWG STRANDED OR SOLID RIBBON CABLE. CONTACT TYCO ELECTRONICS ENGINEERING FOR APPROVED CABLES.
- 5. DIMENSIONS SHOWN ARE FOR 68 POSITION ASSEMBLY.



TUBE	△	68	1-5786090-7
TUBE	△	68	5786090-7
PACKAGING	CONTACT FINISH	NO OF POS	PART NUMBER

THIS DRAWING IS A CONTROLLED DOCUMENT.

DIMENSIONS: MM(INCHES)	TOLERANCES UNLESS OTHERWISE SPECIFIED:	DMN L. VARELA - DOCKS 02-18-05	APVD S. BOLASH 02-18-05	NAME M. WALMSLEY	PRODUCT SPEC
0 PLC ± -	1 PLC ± 0.35(.014)	SIZE A1	CAGE CODE 00779	DRAWING NO. 5786090	RESTRICTED TO
2 PLC ± 0.25(.010)	3 PLC ± 0.15(.006)	WEIGHT -	SCALE 5:1	SHEET 1 OF 1	REV 0
4 PLC ± -	ANGLES ± -	CUSTOMER DRAWING			

Tyco Electronics Corporation
 Harrisburg, PA 17105-3608

PLUG ASSEMBLY, UNSHIELDED, 0.635[.025] CENTERLINE, 1.27[.050] SERIES, AMPLIMITE