



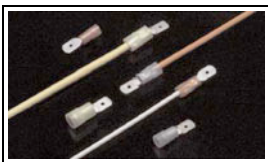
Have a Question?  
Chat with a Product Information Specialist

What can we help you find?

Products Industries Resources About TE My Account Innovation Support Center

696362-1 Product Details

Share Print Email



696362-1

TE Internal Number: 696362-1

Active

View 3D PDF

Quick Disconnect Tabs, Tab Adapters & Tab Caps

Always EU RoHS/ELV Compliant (Statement of Compliance)

Product Highlights:

- Terminal
- Terminal Type = Tab
- Tab Type = Wire Crimp
- Insulated
- Connection Type = Single

View all Features

Quick Links

- Pricing & Availability
- Search for Tooling
- Product Feature Selector
- Contact Us About This Product

Add to My Part List Request Sample Find Similar Products Buy Product

Documentation & Additional Information	
<p><b>Product Drawings:</b></p> <ul style="list-style-type: none"> <li>TAB, 250 SERIES, FASTON, PIDG, WIRE: 22-18 AWG (PDF, English)</li> </ul> <p><b>Catalog Pages/Data Sheets:</b></p> <ul style="list-style-type: none"> <li>PIDG_FASTON (PDF, English)</li> <li>Ultra-Fast and Ultra Fast Plus (PDF, English)</li> </ul> <p><b>Product Specifications:</b></p> <ul style="list-style-type: none"> <li>None Available</li> </ul> <p><b>Application Specifications:</b></p> <ul style="list-style-type: none"> <li>PIDG FASTON Tabs and Fully-Insulated Receptacles (PDF, English)</li> </ul> <p><b>Instruction Sheets:</b></p> <ul style="list-style-type: none"> <li>None Available</li> </ul> <p><b>CAD Files:</b> (CAD Format &amp; Compression Information)</p> <ul style="list-style-type: none"> <li>2D Drawing (DXF, Version C)</li> <li>3D Model (IGES, Version C)</li> <li>3D Model (STEP, Version C)</li> </ul>	<p><b>Additional Information:</b></p> <ul style="list-style-type: none"> <li>Product Line Information</li> </ul> <p><b>Additional Product Images:</b></p> <ul style="list-style-type: none"> <li>Line Drawing</li> </ul> <p><b>Related Products:</b></p> <ul style="list-style-type: none"> <li>Tooling</li> </ul>

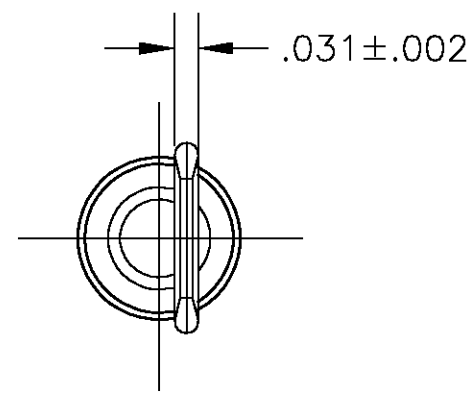
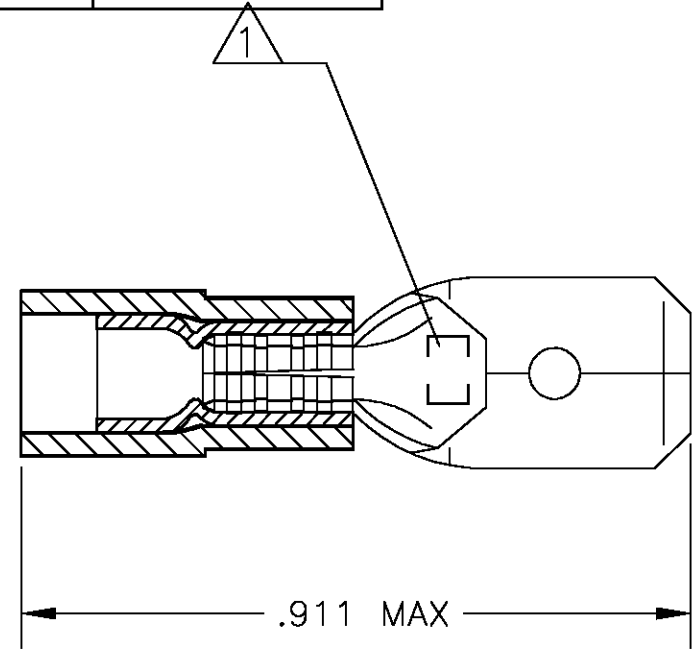
List all Documents

Product Features (Please use the Product Drawing for all design activity)	
<p><b>Product Type Features:</b></p> <ul style="list-style-type: none"> <li>Product Type = Terminal</li> <li>Terminal Type = Tab</li> <li>Insulation = Yes</li> <li>Finish = Tin</li> <li>Wire/Cable Type = Regular Wire</li> <li>Mount Angle = Straight</li> <li>Insulation Support = With</li> <li>Color = Red</li> </ul> <p><b>Termination Features:</b></p> <ul style="list-style-type: none"> <li>Connection Type = Single</li> </ul> <p><b>Dimensions:</b></p> <ul style="list-style-type: none"> <li>Mating Area Interface Dimensions (mm [in]) = 6.35 x 0.81 [.250 x .032]</li> <li>Insulation Diameter (mm [in]) = 2.03-3.05 [.080-.120]</li> </ul> <p><b>Body Features:</b></p> <ul style="list-style-type: none"> <li>Tab Type = Wire Crimp</li> <li>Material = Brass</li> <li>Wire Range (mm [AWG]) = 0.30-0.90<sup>2</sup> [22-18]</li> <li>Stud Hole = Without</li> <li>Insulation Sleeve Material = Nylon</li> </ul>	<p><b>Industry Standards:</b></p> <ul style="list-style-type: none"> <li>RoHS/ELV Compliance = RoHS compliant, ELV compliant</li> <li>Lead Free Solder Processes = Not relevant for lead free process</li> <li>RoHS/ELV Compliance History = Always was RoHS compliant</li> <li>UL Rating = Recognized</li> <li>CSA Certified = Yes</li> </ul> <p><b>Packaging Features:</b></p> <ul style="list-style-type: none"> <li>Packaging Method = Loose Piece</li> <li>Packaging Quantity = 1,000</li> </ul> <p><b>Other:</b></p> <ul style="list-style-type: none"> <li>Brand = AMP</li> <li>Proprietary Name = PIDG FASTON</li> <li>Comment = UL File No. E66717; CSA File No. LR 7189</li> </ul>

THIS DRAWING IS UNPUBLISHED. RELEASED FOR PUBLICATION  
 © COPYRIGHT BY TYCO ELECTRONICS CORPORATION. ALL RIGHTS RESERVED.

LOC	DIST	REVISIONS			
P	LTR	DESCRIPTION	DATE	DWN	APVD
G	86	C1	REV PER ECR 05-001779	26APR05	JR TM

<b>AMP WIRE RANGE</b>	FILE E66717	LR7189 Certified
22-18 AWG STRANDED	22-18 AWG STRANDED	22-18 AWG STRANDED



- ① MARKED AMP 22-18
- 2 DESIGNED FOR WIRE INSULATION DIA OF .080-.115
- ③ BODY: .016±.001 THK BRASS, TIN PL. SLEEVE: NYLON, RED
- 4 RATED FOR 10 MAX AMPERE

100	LOOSE PIECE	8-696362-1
1000	LOOSE PIECE	696362-1
QTY	PACKAGE TYPE	PART NO.

TYCO ELECTRONICS CUSTOMER SERVICE SYSTEM	
FOR ADDITIONAL PRODUCT INFORMATION OR COPIES OF DRAWING AND TECHNICAL DOCUMENTS	PRODUCT INFORMATION CENTER 1-800-522-6752
FOR APPLICATION TOOLING INFORMATION	TOOLING ASSISTANCE CENTER 1-800-722-1111
FOR ORDER ENTRY	1-800-526-5142

MAX RECOMMENDED OPERATING TEMPERATURE: 105°C [221°F]
VOLTAGE RATING: 300V MAX
CIRCULAR MIL AREA: 509-1,900 STRANDED

THIS DRAWING IS A CONTROLLED DOCUMENT.	
DIMENSIONS: INCHES	TOLERANCES UNLESS OTHERWISE SPECIFIED:
	0 PLC ± -
	1 PLC ± -
	2 PLC ± -
	3 PLC ± .008
	4 PLC ± -
MATERIAL	FINISH
- ③	- ③

DWN JR RUTH 06DEC01	Tyco Electronics Corporation Harrisburg, Pa 17105-3608	TAB, 250 SERIES, FASTON, PIDG, WIRE: 22-18 AWG		
CHK T MICHELUTTI 06DEC01				
APVD T MICHELUTTI 06DEC01				
PRODUCT SPEC				
APPLICATION SPEC	SIZE	CAGE CODE	DRAWING NO	RESTRICTED TO
114-13076	A3	00779	C-696362	-
WEIGHT	CUSTOMER DRAWING		SCALE	SHEET
-	-		1:1	1 OF 1
			REV	C1