

Distributed by:

JAMECO[®]
ELECTRONICS

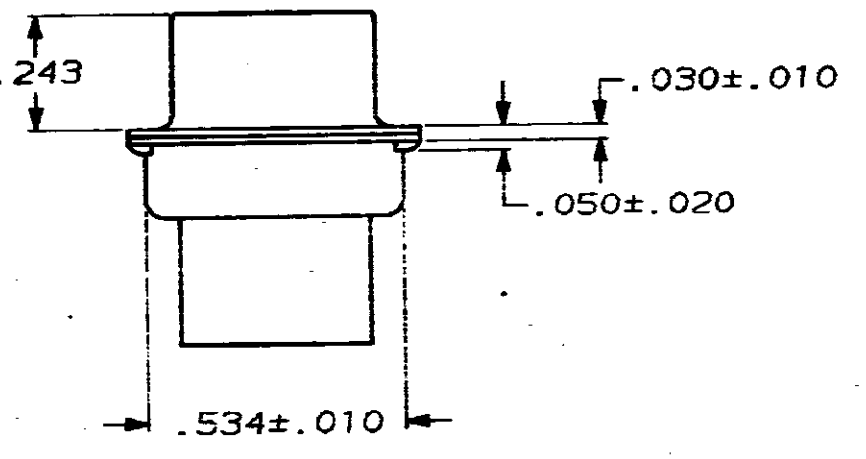
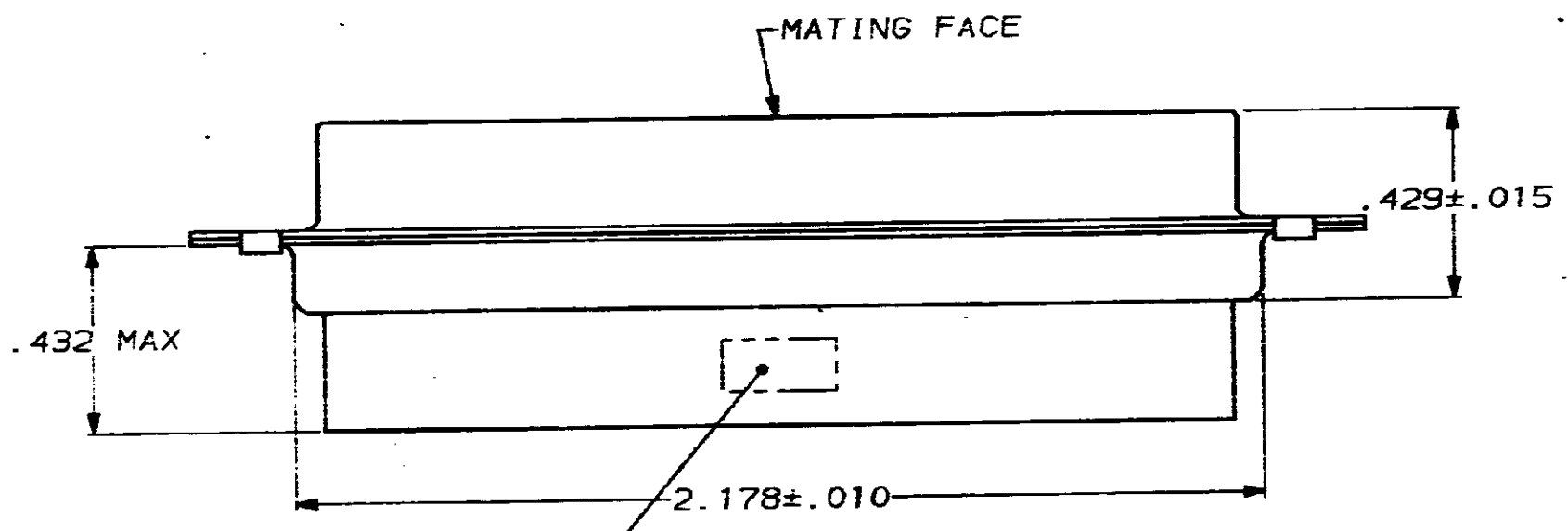
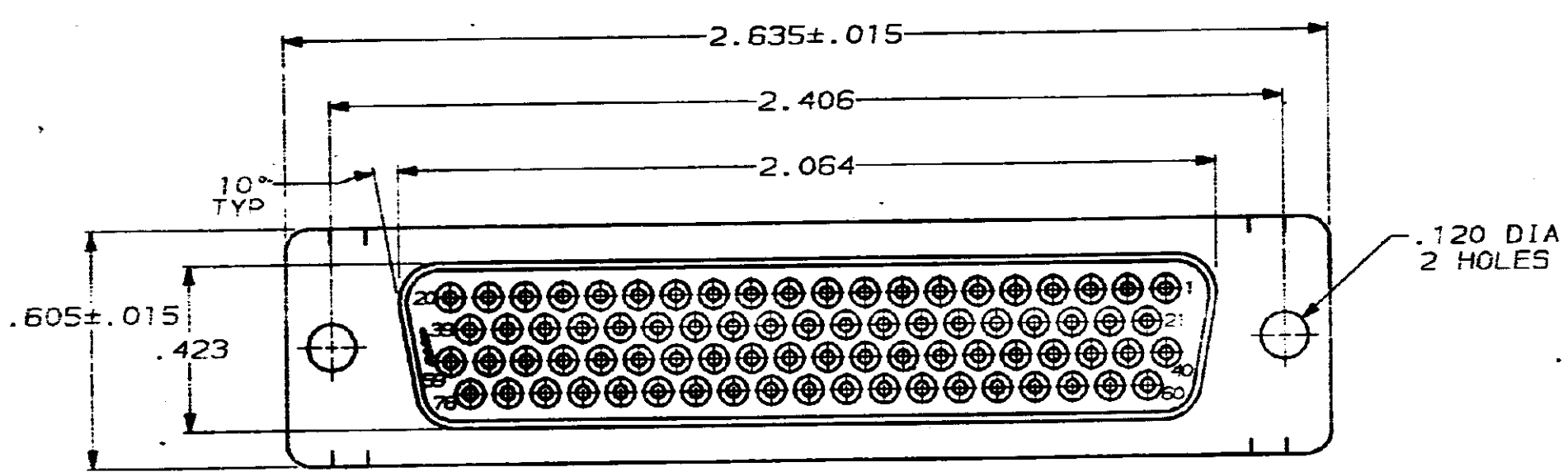
www.Jameco.com ♦ 1-800-831-4242

The content and copyrights of the attached
material are the property of its owner.

Jameco Part Number 838065

DRAWING MADE IN THIRD ANGLE PROJECTION
 THIS DRAWING IS UNPUBLISHED. RELEASED FOR PUBLICATION .19
 © COPYRIGHT 19 BY AMP INCORPORATED. ALL INTERNATIONAL RIGHTS RESERVED.

LOC		DIST		ZONE		LTR		REVISIONS		DATE	APPD
BD	39							0	REL WAS 87-4870-17	-	-



AMP, PART NO & DATE CODE, MARKED IN AREA INDICATED, ON FAR SIDE

- CONNECTOR ACCEPTS SIZE 22 DF SOCKET CONTACTS, RETENTION TINES ARE AN INTEGRAL PART OF INSERT.
- FLAME RETARDANT 94V-0 RATED GLASS FILLED NYLON, COLOR: BLACK.
- STEEL PER ASTM A109.
- TIN PLATED PER MIL-T-10727.

748569-1

PART NO

DO NOT SCALE PRINT. UNLESS SPECIFIED DIMENSIONS IN INCHES	DR <i>C. Richard</i> 1/12/88	AMP INCORPORATED Harrisburg, Pa. 17105
TOLERANCES ON:	CHK <i>W.C. Kender</i> 1-12-88	
2 PLC DEC = -	APPD <i>S. P. ...</i> 1/11/88	NAME RECEPTACLE CONNECTOR, SIZE 5, 78 POSN, AMPLIMITE® HDP-22
3 PLC DEC = .005	APPD <i>V. Kumar</i> 1/19/88	
ANGLES ± 2°	PRODUCT SPEC	SIZE C FSCM NO 00779 DRAWING NO 748569
MATERIAL MOLDED PARTS: Δ	APPLICATION SPEC	SCALE 3:1 SHEET 1 OF 1
SHELLS: Δ	WEIGHT	
FINISH SHELLS: Δ		

CUSTOMER DRAWING