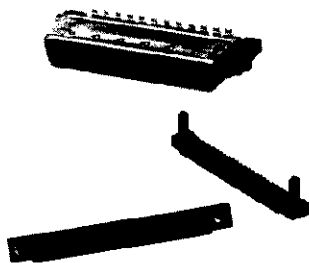


AMPLIMITE .050 Series Cable Plug Connectors, Series III

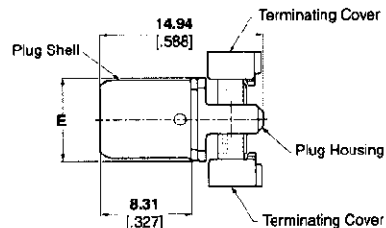
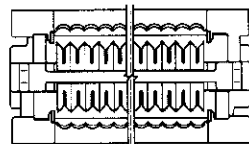
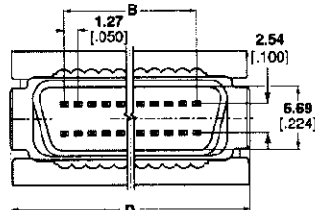
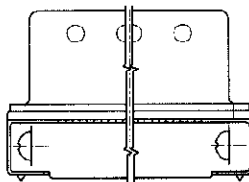
Shielded Plugs



Shielded Plug with Unassembled Standard Termination Covers



Shielded Plug with Assembled Standard Termination Covers



Shielded Plug with Assembled or Unassembled Standard Termination Covers

Materials:

Housing and Covers —

Thermoplastic, 94V-0 rated, black

Contacts — Phosphor bronze, duplex plated 0.00076 [.000030] min. gold on mating end, in-lead on termination end, all underplated nickel

Shell — Steel, plated tin-nickel a toy over nickel over copper

Recommended wire size³ —

28 AWG [0.08-0.09mm²] or 30 AWG [0.05mm²], solid or 7 strand, with a 0.74-0.89 [.029-.036] insulation diameter.

Technical Documents:

Product Specifications — 108-1228

Application Specifications — 114-40029

Instruction Sheet — 408-9427

Connectors With Standard Termination Covers

No. of Pos.	Dimensions			Part Numbers	
	B	D	E	Assembled Covers	Unassembled Covers
40	24.13 .950	33.76 1.329	7.44 .293	—	749621-4
50	30.48 1.200	40.11 1.579	7.44 .293	749111-4	749621-5
68	41.91 1.650	51.54 2.029	7.44 .293	749111-5	749621-7
80	49.53 1.950	59.16 2.329	9.47 .373	—	749621-8
100	62.23 2.450	71.86 2.829	9.47 .373	—	749621-9

- Notes:**
1. Plug connector requires backshell kit for complete assembly and must use round jacketed cable (discrete or laminated). Refer to pages 502-504 for backshell kit part numbers.
 2. For termination tooling, see page 501.
 3. The CHAMPOMATOR 2.5 Automatic Termination Machine will accept diameters as low as 0.58 [.023].

Input/Output

Parallel Applications