

Distributed by:



www.Jameco.com ♦ 1-800-831-4242

The content and copyrights of the attached material are the property of its owner.

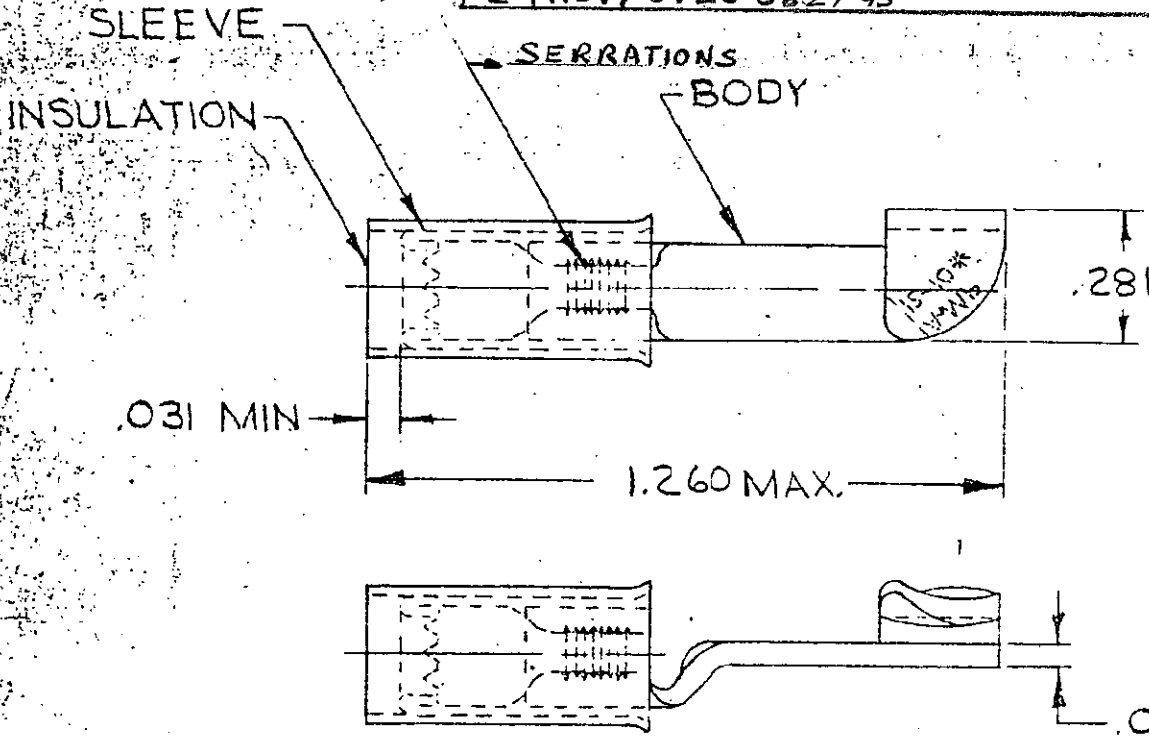
DRAWING MADE IN AMERICAN PROJECTION

LOC **G** PRINT DIST **14**

© 1949 BY AMP INCORPORATED, ALL RIGHTS RESERVED. AMP PRODUCTS COVERED BY PATENTS AND/OR PATENTS PENDING.

REVISIONS

LTR	DESCRIPTION	DATE	APPROVED
B	REDRAWN PER REV. P-6080	5-15-70	<i>Jme</i>
C	REV PER G-4732	7-26-88	<i>Pjd</i>
D	REV / 0720-0036-93	3-8-93	<i>me</i>
E	REV / 0720-0827-95	ME 12	<i>me</i>



Jameco Part Number 303221

FOR .150 TO .250 WIRE INSULATION DIA.

QTY	DESCRIPTION	PART NO	MATERIAL & FINISH
50	LOOSE PC. BOX	8-35762-2	
1	WIRE TERMINAL	35762	INSULATION: NYLON COLOR: YELLOW SLEEVE: COPPER (QQ-C-576) BODY: COPPER (QQ-C-576) TIN PL (MIL-T-10727)
2500	PC. ON TAPE	2-35762-3	

UNLESS OTHERWISE SPECIFIED DIMENSIONS ARE IN INCHES
TOLERANCES ON:
DECIMALS ±.008
ANGLES ± 5°

CONTRACT NO. — H —
 DR. M J L 5-14-70
 CHK. Am 5-15-70
 APPD. Swabel 5-15-70
 REL. H. Young 5-18-70
 DSGN APPD. [Signature]
 OTHER APPD.

AMP AMP INCORPORATED
 HARRISBURG, PENNSYLVANIA

NAME: WIRE TERMINAL
 PIDG - KNIFE-DISCONNECT
 WIRE SIZE: 12-10

SIZE: **A** CODE IDENT NO.: **00779** PART NO.: **35762**

MATERIAL: SEE TABLE