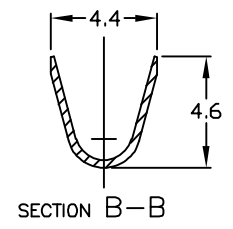
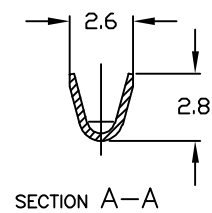
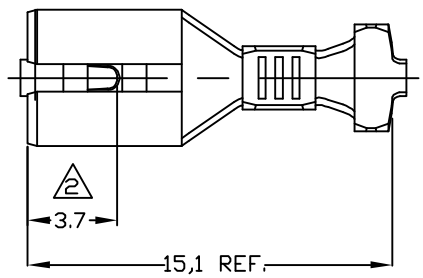


P	LTR	DESCRIPTION	DATE	DWN	APVD
G		REVISED DESIGN ECO-11-024127	05DEC11	NCL	HC

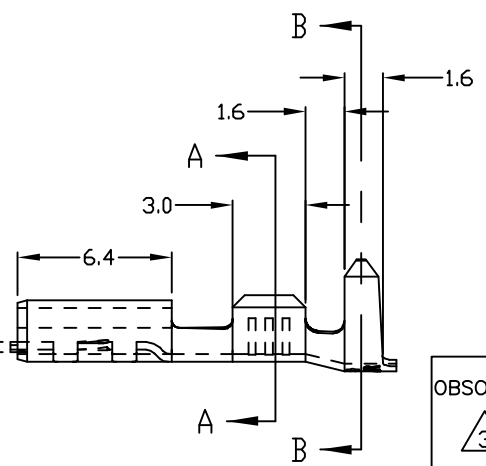
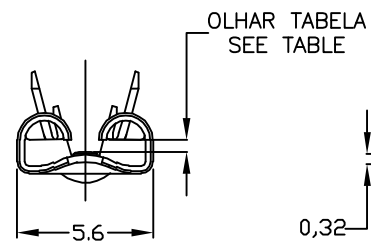


- △1 - PEÇA SOLTA - VER DESENHO 444201.
- △1 - LOOSE PIECE - SEE DRAWING 444201.
- △2 - LOCALIZAÇÃO DO DIMPLE - 3,0mm. PARA O PN.1-881623-0.
- △2 - DIMPLE LOCATION 3,0mm. FOR PN. 1-881623-0.
- △3 - OBSOLETE PARTS: OBSOLETE CIS STREAMLINING PER D.RENAUD/D.SINISI
- △4 - HEAT TREATMENT

INSERTION AND EXTRACTION REQUIREMENTS	1 ST ON (N) MAX.	1 ST OFF (N) MIN.	6 TH ON (N) MIN.
	46	28	15

0,5 mm	---/---	LATÃO/BRASS	△4 1-881623-1
0,8 mm	---/---	LATÃO/BRASS	△2 1-881623-0
0,5 mm	ESTANHADO/TIN PLATED	LATÃO/BRASS	△1 881623-9
0,5 mm	---/---	LATÃO/BRASS	△1 881623-8
OBSOLETE	ESTANHADO/TIN PLATED	LATÃO/BRASS	881623-7
OBSOLETE	---/---	LATÃO/BRASS	881623-6
0,8 mm	NIQUELADO/NICKEL PLATED	AÇO/STEEL	881623-5
0,8 mm	---/---	AÇO/STEEL	881623-4
0,8 mm	ESTANHADO/TIN PLATED	BRONZE/FOSF	881623-3
0,8 mm	ESTANHADO/TIN PLATED	LATÃO/BRASS	△1 881623-2
0,8 mm	---/---	LATÃO/BRASS	△1 881623-1
PARA LINGUETA	FINISH	MATERIAL	PART NUMBER

OBSOLETE  
△3



THIS DRAWING IS A CONTROLLED DOCUMENT.

DIMENSIONS: mm	TOLERANCES UNLESS OTHERWISE SPECIFIED:	DWN MRBRIZ 10SEP2003	TE Connectivity .187 SERIES FASTON REC.
	0 PLC ± -	CHK PLARIA 10SEP2003	
	1 PLC ± 0,3	APVD DOLIVEIRA	
	2 PLC ± -	PRODUCT SPEC	
	3 PLC ± -	APPLICATION SPEC	NAME
	4 PLC ± -		SIZE CAGE CODE DRAWING NO RESTRICTED TO
	ANGLES ± 1	WEIGHT	A300779 G=881623
MATERIAL VER TABELA	FINISH VER TABELA	CUSTOMER DRAWING	SCALE 5:1 SHEET 1 of 1 REV G

INS. RANGE Ø2,0 - 3,3 mm	WIRE RANGE 0,5 - 1,0 mm <sup>2</sup>
-----------------------------	---