

Wire to Board Connectors

2.5mm Signal Double Lock Connectors (2.5 SDL)

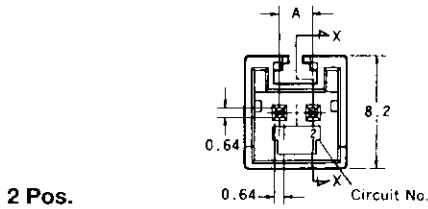
Post Headers (For PC Board Mount)

Standard Profile Type

Material and Finish :

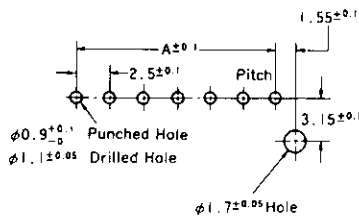
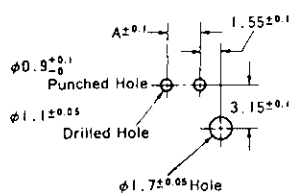
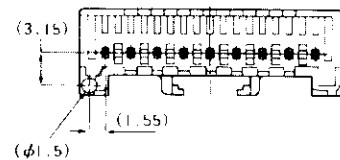
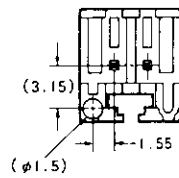
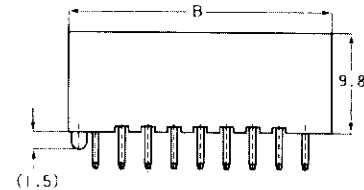
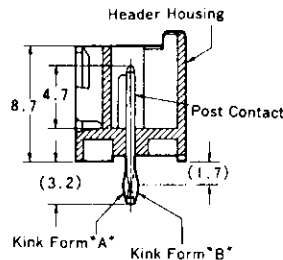
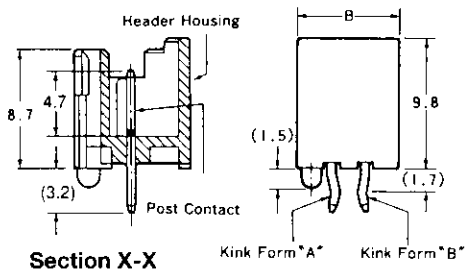
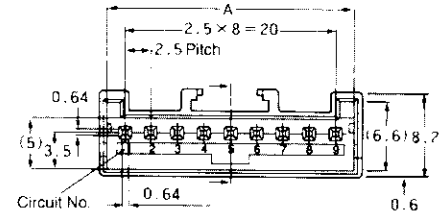
Header Housings—UL94V-0 rated, 66 Nylon, glass-filled, natural color

Post Contact—Pre-tin lead copper alloy



3 to 13 Pos.

As the designs of 5 pos to 8 pos header housings are slightly different, please ask for the drawings.



No. of Pos.	Dimensions		Post Header Part Number		Mating Plug Housing Part Number
	A	B	Loose Piece	Radial Tape Mounted (Qty.)	
2	2.5	7.5	917780-1	917894-1 (900)	917686-1
3	5.0	10.0	917781-1	917895-1 (900)	917687-1
4	7.5	12.5	917782-1	917896-1 (450)	917688-1
5	10.0	15.0	917783-1	917897-1 (450)	917689-1
6	12.5	17.5	917784-1	917898-1 (450)	917690-1
7	15.0	20.0	917785-1	917899-1 (450)	917691-1
8	17.5	22.5	917786-1	917900-1 (450)	917692-1
9	20.0	25.0	917787-1	—	917693-1
10	22.5	27.5	917788-1	—	917694-1
11	25.0	30.0	917789-1	—	917695-1
12	27.5	32.5	917790-1	—	917696-1
13	30.0	35.0	917791-1	—	917697-1