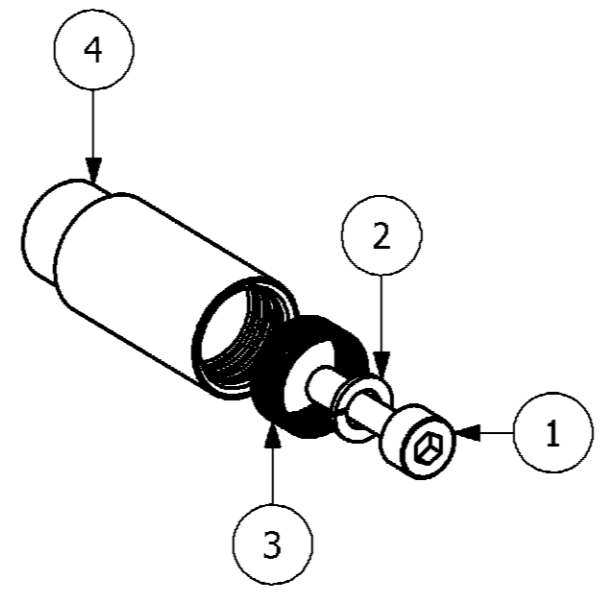


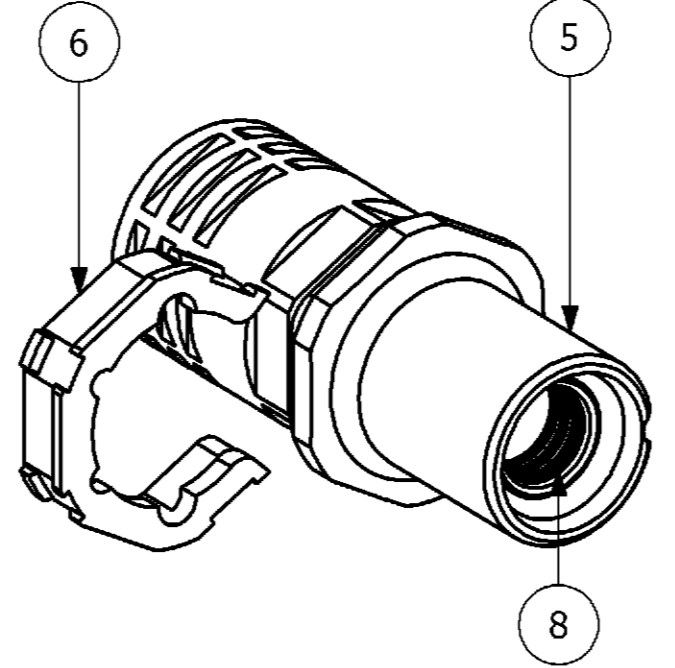
LOC		DIST		REVISIONS ÄNDERUNGEN			DATE	DWN	APVD
AI	-	P	LTR	DESCRIPTION BESCHREIBUNG					
PROJEKT NR. B901815		A4		ECR-16-009338		06FEB2017	GCM	MKO	

NOTES

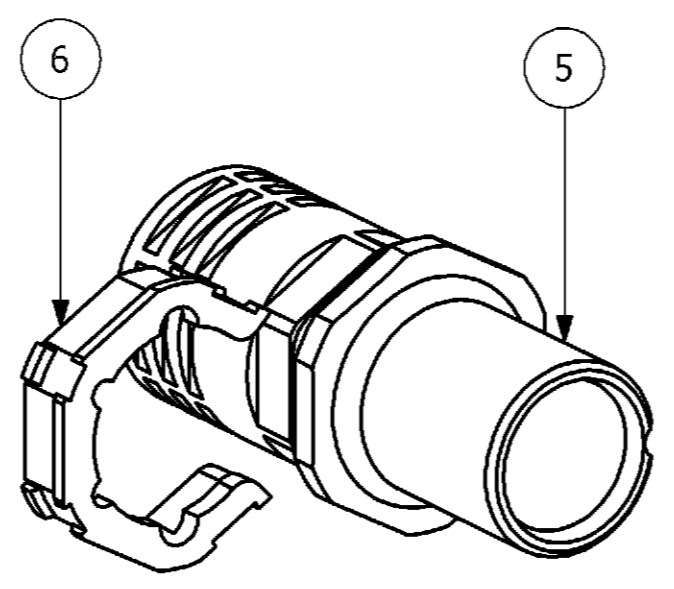
- 1 PACKAGING PN 01-05
PACKAGING QUANTITY: 5 PIECES
- 2 PACKAGING PN 06
PACKAGING QUANTITY: 1 PIECE
- TE SEE TE QUALITYMANAGEMENT PROCEDURE NO. 1.12 CURRENT REV.



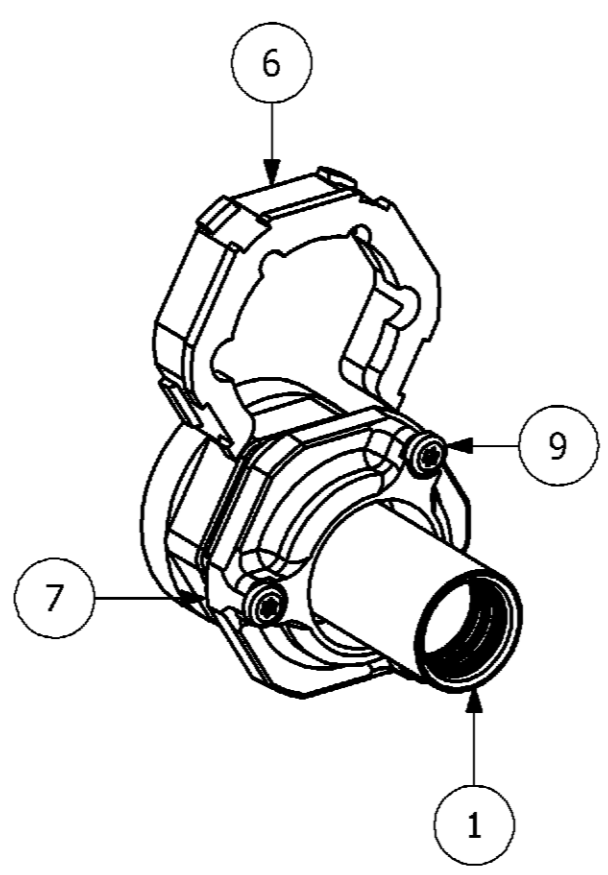
PN 0-1/0-6



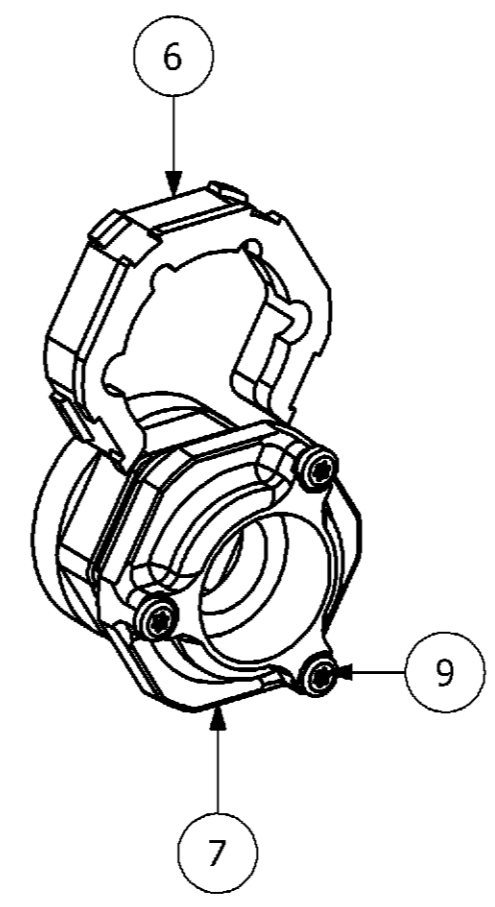
PN 0-2



PN 0-3



PN 0-4



PN 0-5

OBSOLETE									
QTY	QTY	QTY	QTY	QTY	QTY	DESCRIPTION	Material	Surcace/Color	ITEM/NO.
-	3	3	-	-	-	SCREW	V2A	-	9
-	-	1	-	1	-	SOCKET CONTACT	-	-	8
-	1	1	-	-	-	CONTACT SOCKET GROUND	GD-ZnAl	-	7
-	1	1	1	1	-	CLIP	PA66	Sw	6
-	-	-	1	1	-	CONTACT INSERT SOCKET	PA66	Sw	5
1	-	-	-	-	1	SOCKET CONTACT	CuZn	Ag	4
3	-	-	-	-	3	CANTED COIL SPRING	BeCu	Ag	3
1	-	-	-	-	1	SPRINGWASHER	V2A	-	2
1	-	-	-	-	1	SCREW	V2A	-	1
0-6	0-5	0-4	0-3	0-2	0-1	DESCRIPTION	Material	Surcace/Color	ITEM/NO.
				X		HF. 13.Bu			
			X			SET-HF. 13/16-13.Bu			
		X				HF. 13/16.Bu			
			X			SET-HF.E-13.Bu			
	X					HF.E. 13/16.Bu			
X						HF. 13.Bu-1			

DWN G.WROBLEWSKI 19.09.2006		 TE Connectivity	
CHK H.BRAUN 19.09.2006			
APVD T.SCHNURPFEL 19.09.2006		NAME CONTACT SOCKET SERIES HF	
PRODUCT SPEC. PRODUKTSPEZ. 108-74025		DRAWING NO ZEICHNUNGS-NR. 114-74032	
APPLICATION SPEC. VERARBEITUNGSSPEZ.		SIZE A2	CAGE CODE 00779
MATERIAL		DRAWING NO ZEICHNUNGS-NR. 1110951	
FINISH / OBERFLÄCHE / FARBE		RESTRICTED TO NUR FÜR	
CUSTOMER DRAWING / KUNDENZEICHNUNG			
SCALE MASSSTAB 1:1		SHEET BLATT 1 OF 1 REV. A4	