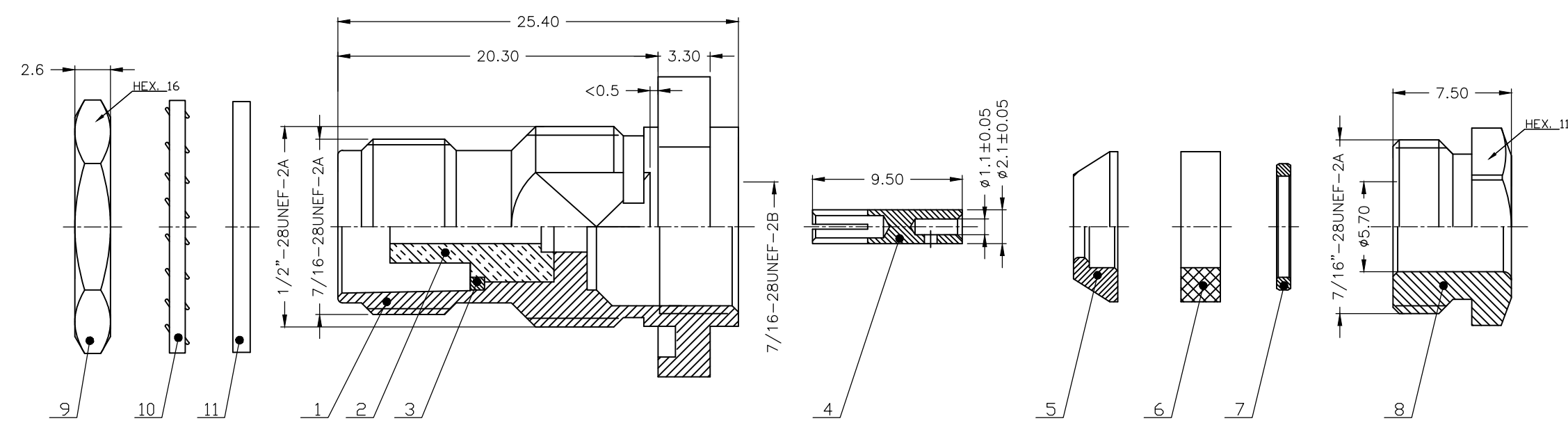


THIS DRAWING IS UNPUBLISHED. RELEASED FOR PUBLICATION JUNE ,2006.  
 © COPYRIGHT 2006 By - ALL RIGHTS RESERVED.

P	LTR	DESCRIPTION	DATE	DWN	APVD
	C	ECR-16-011953	17JUN2019	RZ	RS



NOTES:

- 1 SINGLE PACKING: ONE CONNECTOR PER LABELED BAG PACKAGED. LABELED PER TEC-107-115
- 2 TRAY PACKAGE
- 3 Ag PLATING
- 4 THIS ITEM MUST BE WHITE

5 ELECTRICAL CHARACTERISTICS

FREQUENCY RANGE:	DC - 11 GHz
NOMINAL IMPEDANCE:	50 Ohm
INSULATION RESISTANCE:	5000 MOhm
WORKING VOLTAGE:	500 Volts RMS at Sea Level
DIELECTRIC WITHSTAND VOLTAGE:	1500 Volts RMS Max
CONTACT RESISTANCE:	
CENTRE CONTACT:	1.50 mOhm Max
OUTER CONTACT:	1.00 mOhm Max
VSWR @ 4GHz:	1.30:1 Max
INSERTION LOSS dB @ x 3 GHz:	0.20 Max

6 MECHANICAL CHARACTERISTICS

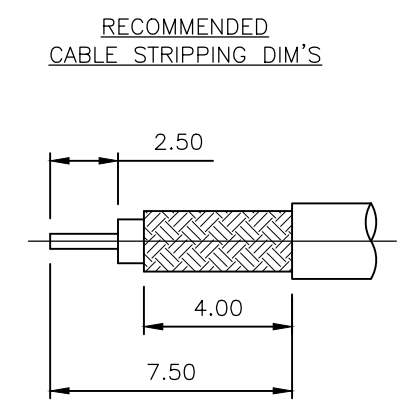
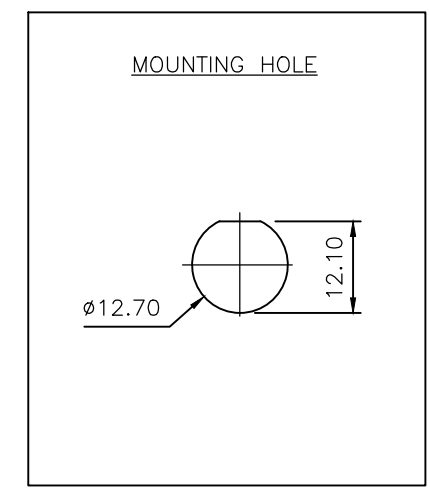
COUPLING NUT RETENTION FORCE:	N/A
CABLE RETENTION FORCE:	170N Min
CLAMP NUT RECOMMENDED TORQUE:	4N
MOUNT NUT RECOMMENDED TORQUE:	4N
DURABILITY:	500 Cycles Min

7 ENVIRONMENTAL CHARACTERISTICS

OPERATING TEMPERATURE: -65 to +165 DegC

8 ALL DIMENSIONS ARE NOMINAL FOR REFERENCE ONLY UNLESS OTHERWISE STATED

9 CABLE TYPE: RG58C/U, 141A/U, URM43, 76, KX15



QTY	UNIT	MATERIAL	DESCRIPTION	ITEM
1	1	SILICONE RUBBER	GASKET	11
1	1	BRONZE	LOCKWASHER	10
1	1	BRASS	HEXAGONAL NUT	9
1	1	BRASS	CLAMP NUT	8
1	1	BRASS	WASHER	7
1	1	SILICONE RUBBER	GASKET	6
1	1	BRASS	SLEEVE	5
1	1	BRONZE	CONTACT	4
1	1	BRASS	WASHER	3
1	1	PTFE	INSULATION	2
1	1	BRASS	BODY	1
6--0	1--0	MATERIAL	DESCRIPTION	ITEM

THIS DRAWING IS A CONTROLLED DOCUMENT.		DWN J.SANDWELL 08JUN06		TE Connectivity	
DIMENSIONS: mm		CHK S.PARLOW 08JUN06			
TOLERANCES UNLESS OTHERWISE SPECIFIED:		APVD F.WHEELER-KING 08JUN06		NAME	
0 PLC ± -		PRODUCT SPEC		TNC STR BULKHEAD JACK SOLDER	
1 PLC ± 0.15		APPLICATION SPEC		50 OHM	
2 PLC ± 0.1		411-3252		SIZE	CAGE CODE
3 PLC ± -		WEIGHT 0.000000		DRAWING NO	
4 PLC ± -		CUSTOMER DRAWING		RESTRICTED TO	
ANGLES ± 5		A3 00779		G-1478021	
FINISH -		SCALE NTS		SHEET 1 OF 1	
MATERIAL SEE TABLE		REV C			