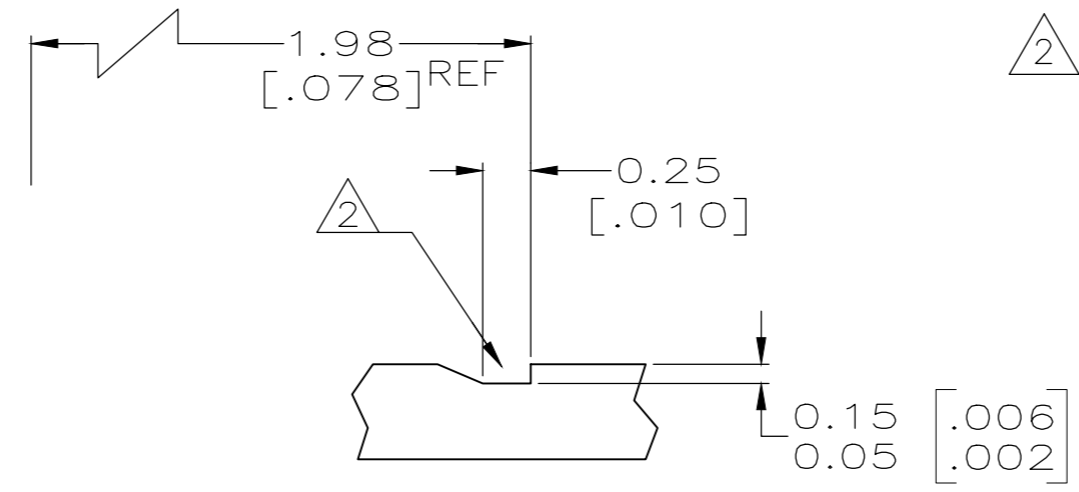
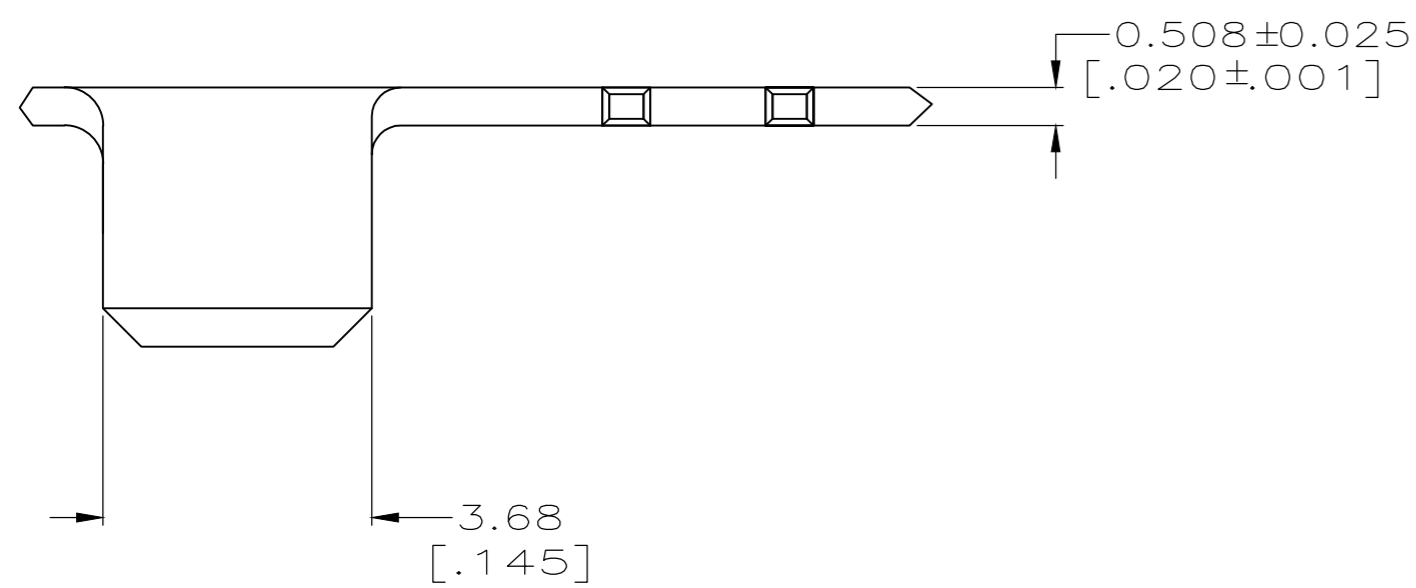


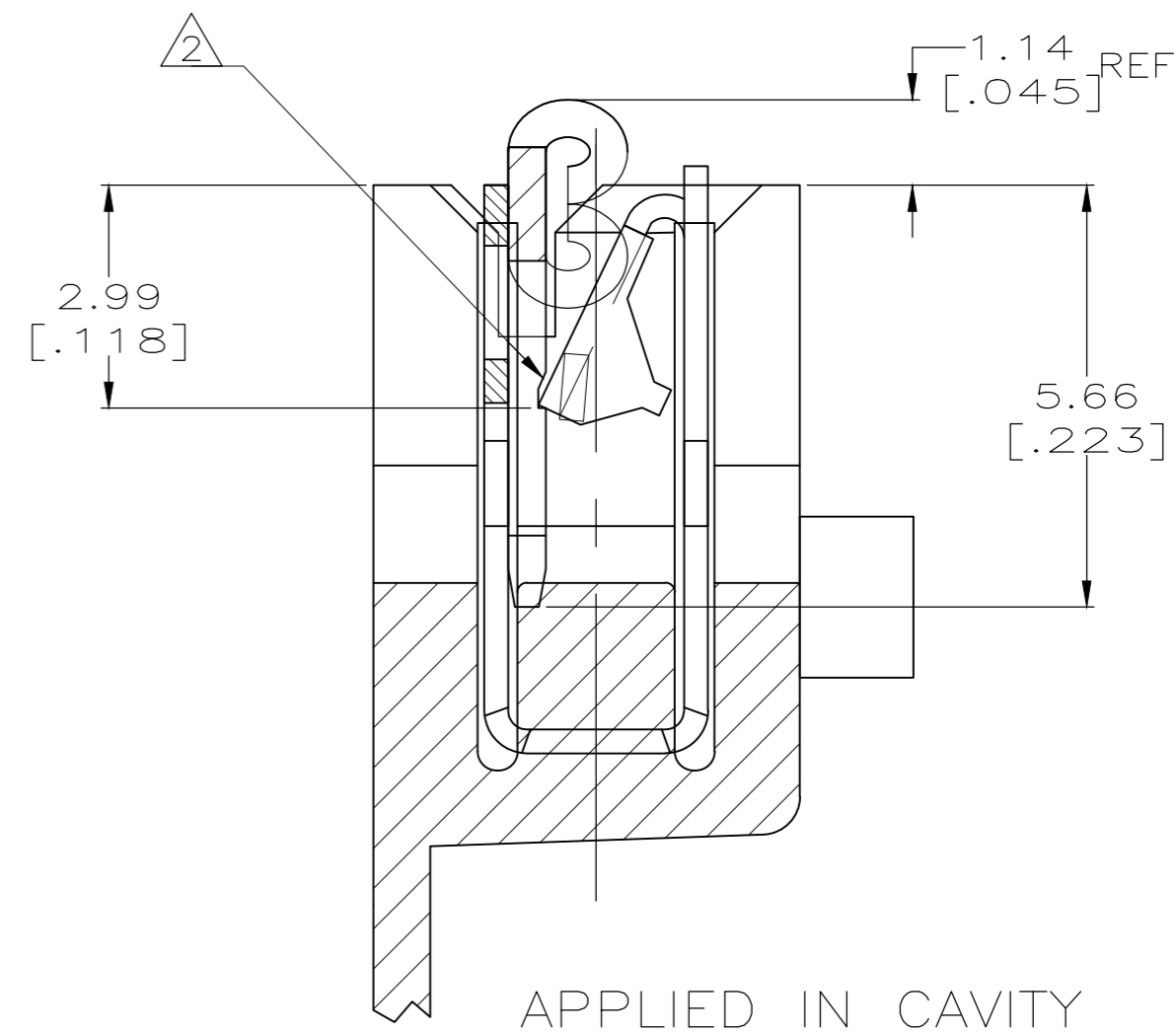
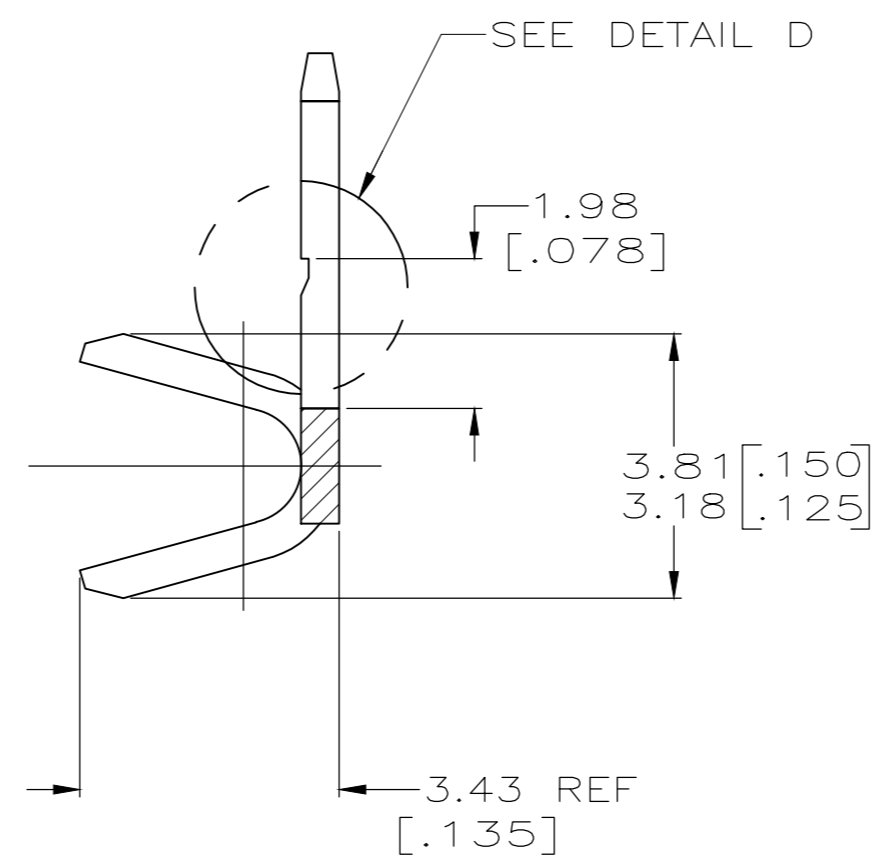
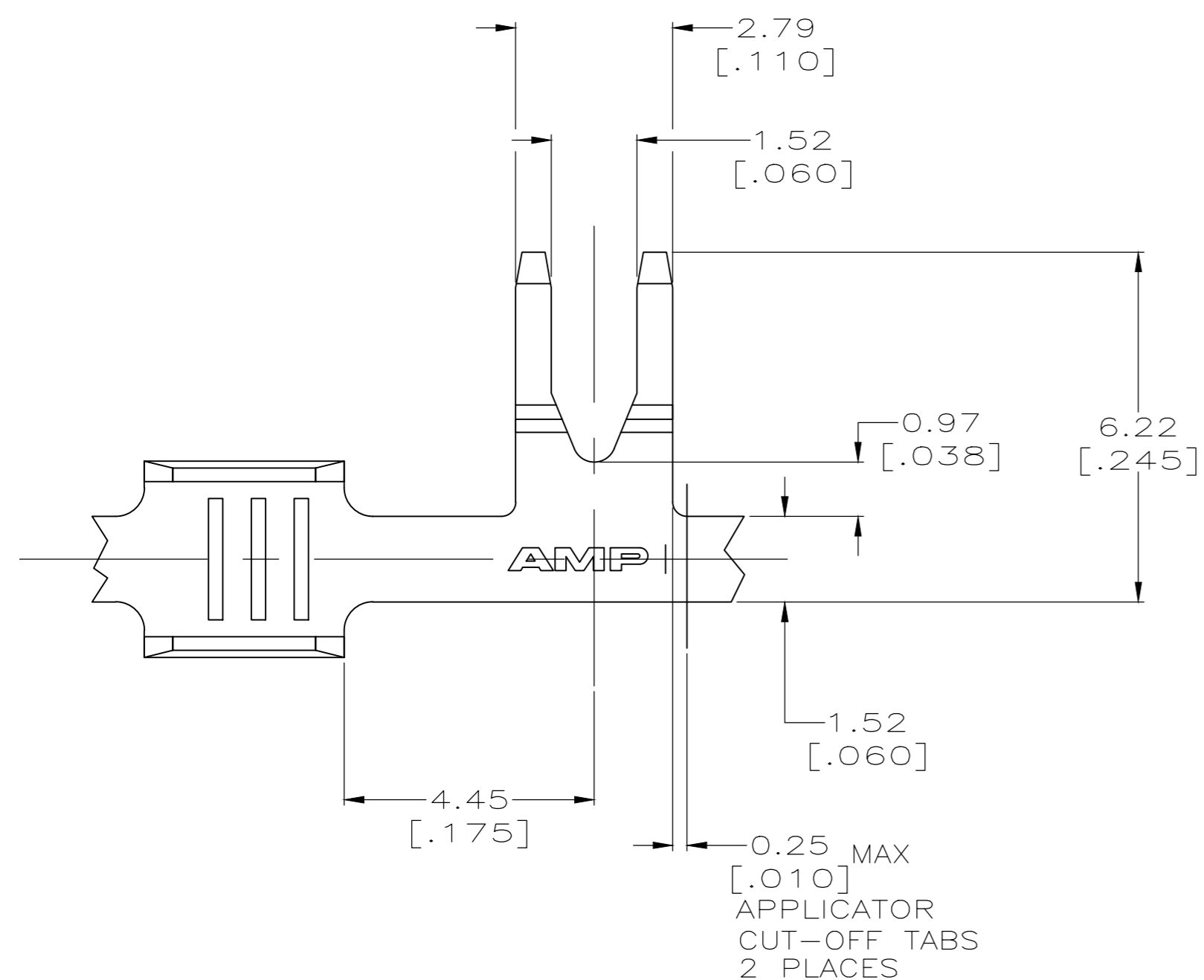
THIS DRAWING IS UNPUBLISHED. RELEASED FOR PUBLICATION
 © COPYRIGHT - By - ALL RIGHTS RESERVED.

LOC		DIST		REVISIONS			
P	LTR	DESCRIPTION		DATE	DWN	APVD	
AF	50	D3	REMOVED NOTE 3		21AUG2018	SV	PKS

- 1 CONTINUOUS STRIP ON REELS.
- 2 FOR OPTIMUM RETENTION IN POKE-IN MAG-MATE TERMINALS, THE SERRATION, MUST BE ENGAGED WITH THE EDGE OF THE LEAF.



D DETAIL
 SCALE 25:1
 ROTATED 90° CW



STRIP LENGTH	TYPE	WIDTH	HEIGHT	WIRE
4.32 [.170]	F	2.79 [.110]	1.75 [.069]	1.3mm ² [16]
±0.38 [±0.15]			±0.51 [±.002]	0.8mm ² [18]
				0.5mm ² [20]

WIRE BARREL CRIMP

REVERSE	WIRE RANGE	PART NUMBER
	0.5-1.4mm ² [#20-#16] AWG	1217406-2
STANDARD	0.5-1.4mm ² [#20-#16] AWG	1217406-1

THIS DRAWING IS A CONTROLLED DOCUMENT.

DIMENSIONS: mm [INCHES]	TOLERANCES UNLESS OTHERWISE SPECIFIED:	DWN MICHAEL S. FEHER 08MAY2000	 TE Connectivity
	0 PLC ± -	CHK KURT A. RANDOLPH 08MAY2000	
	1 PLC ± -	APVD KURT A. RANDOLPH 08MAY2000	
	2 PLC ± 0.25[.010]	NAME	
	3 PLC ± -	PRODUCT SPEC	
4 PLC ± -	4 ANGLES ± -	108-22045	SIZE
MATERIAL BRASS	FINISH TIN PLATE	114-2060	CAGE CODE
		WEIGHT -	DRAWING NO
		CUSTOMER DRAWING	RESTRICTED TO
			SCALE 10:1
			SHEET 1 of 1
			REV D3