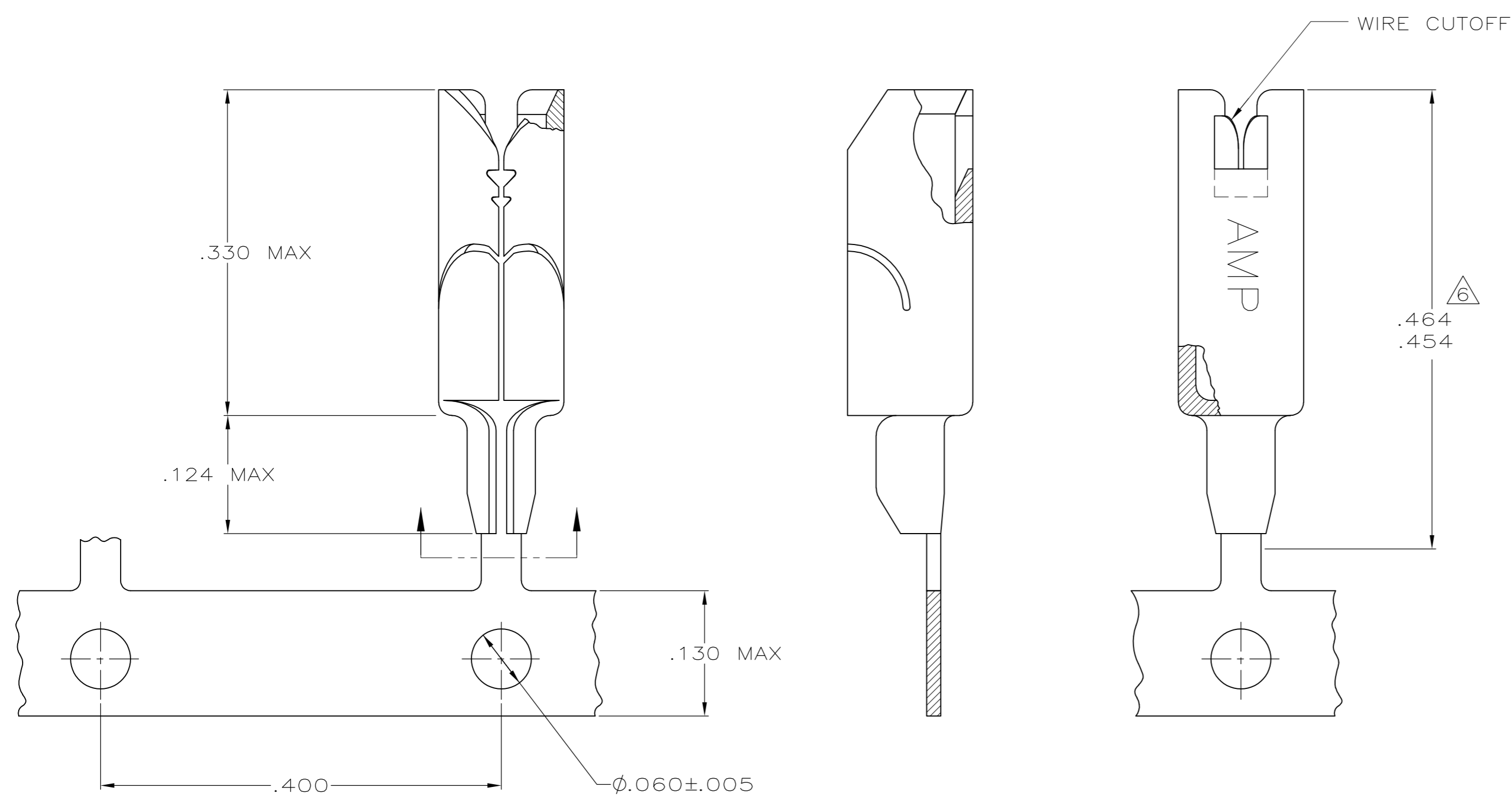
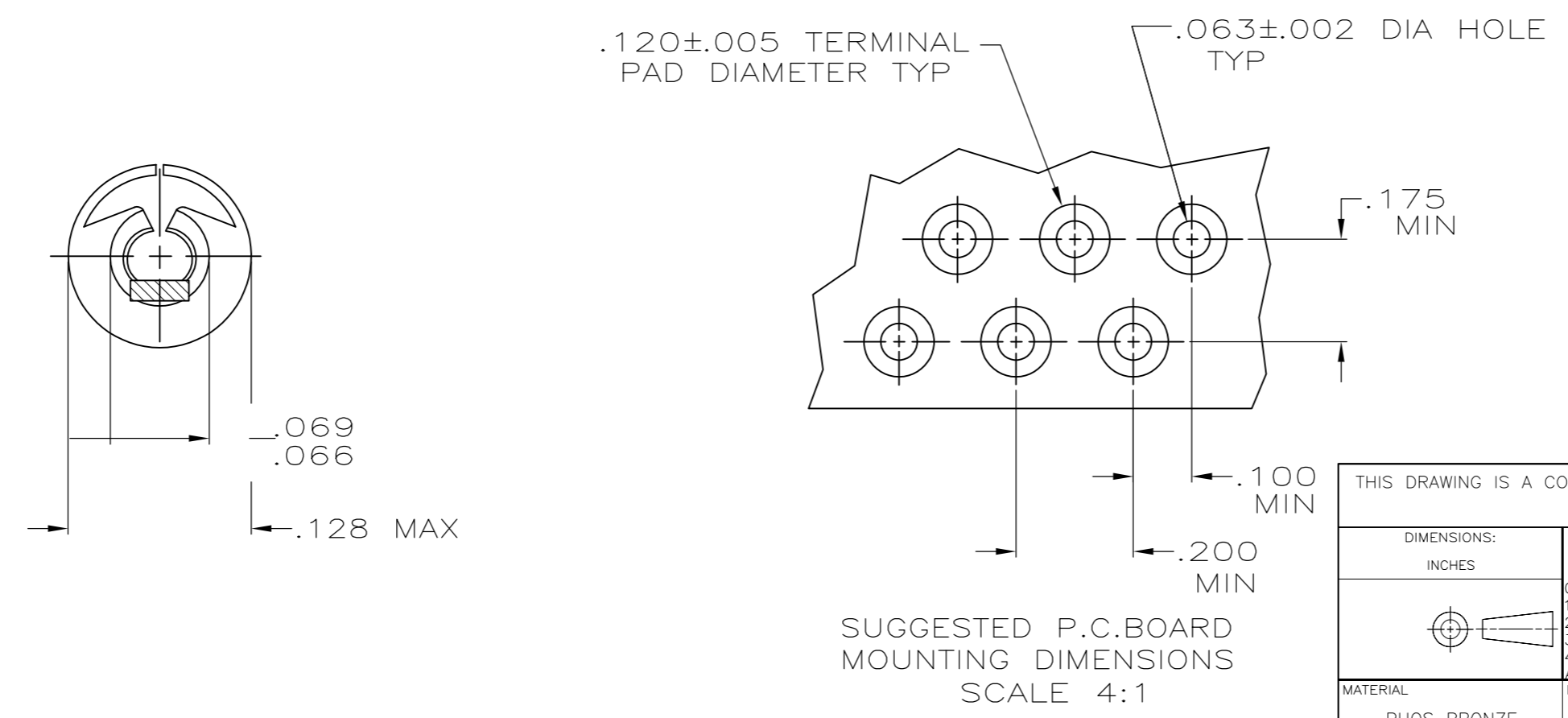


LOC	DIST	REVISIONS			
P	LTR	DESCRIPTION	DATE	DWN	APVD
AA	27	B	REL PER ECR-17-004131	20JUN17	ST TD

D
C
B
A



- 1 FOR USE IN PRINTED CIRCUIT BOARDS .062/.094 THICK.
- 2 WIRE RANGE : 22-26 AWG SOLID OR STRANDED WIRE. MAXIMUM INSULATION DIA OF .086 IS ACCEPTABLE FOR MOST APPLICATIONS.
- 3 TERMINAL SHALL ACCOMMODATE ONE OR TWO WIRES OF THE SAME TYPE AND WITHIN PLUS OR MINUS ONE WIRE GAGE SIZE. EXAMPLE: 24 AWG MAY BE MIXED WITH EITHER 26 OR 22 AWG.
- 4 USE INSERTION TOOL, P/N 231890-1.
- 5 WHEN USING TEFLON INSULATED WIRES USE 1217675-1.
- 6 CUT-OFF DIMENSION FOR LOOSE PIECE PARTS ONLY.
- 7 ONE LOOSE END STYLE SPLICE ALLOWED PER REEL.
- 8 PREPRODUCTION - FASR REQ.



OBSOLETE	230549-1	STRIP MOUNTED	AS SHOWN	1217675-1
NOTE	TERMINAL INSERTION TOOL	DESCRIPTION	PART NO.	
THIS DRAWING IS A CONTROLLED DOCUMENT.		AMP Incorporated Harrisburg, PA 17105-3608		
DWN: JR RUTH 10JUL01 CHK: MS FEHER 10JUL01 APVD: E HOWARD 10JUL01		NAME: AMP TERMINAL, .125 DIA WITH CUTOFF, AMP BARREL		
DIMENSIONS: INCHES		SIZE: A2 CAGE CODE: 00779 DRAWING NO: 1217675		
TOLERANCES UNLESS OTHERWISE SPECIFIED: 0 PLC ±- 1 PLC ±- 2 PLC ±- 3 PLC ±- 4 PLC ±- ANGLES ±-		RESTRICTED TO: -		
MATERIAL: PHOS BRONZE FINISH: PRE-TINNED		SCALE: 10:1 SHEET 1 OF 1 REV B		
CUSTOMER DRAWING		SCALE: 10:1 SHEET 1 OF 1 REV B		

1217675
B

A