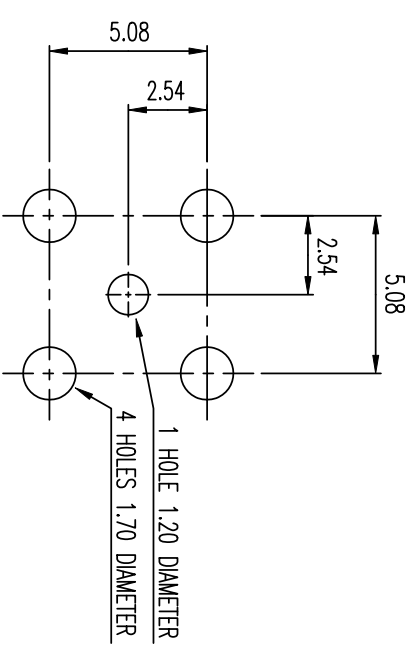
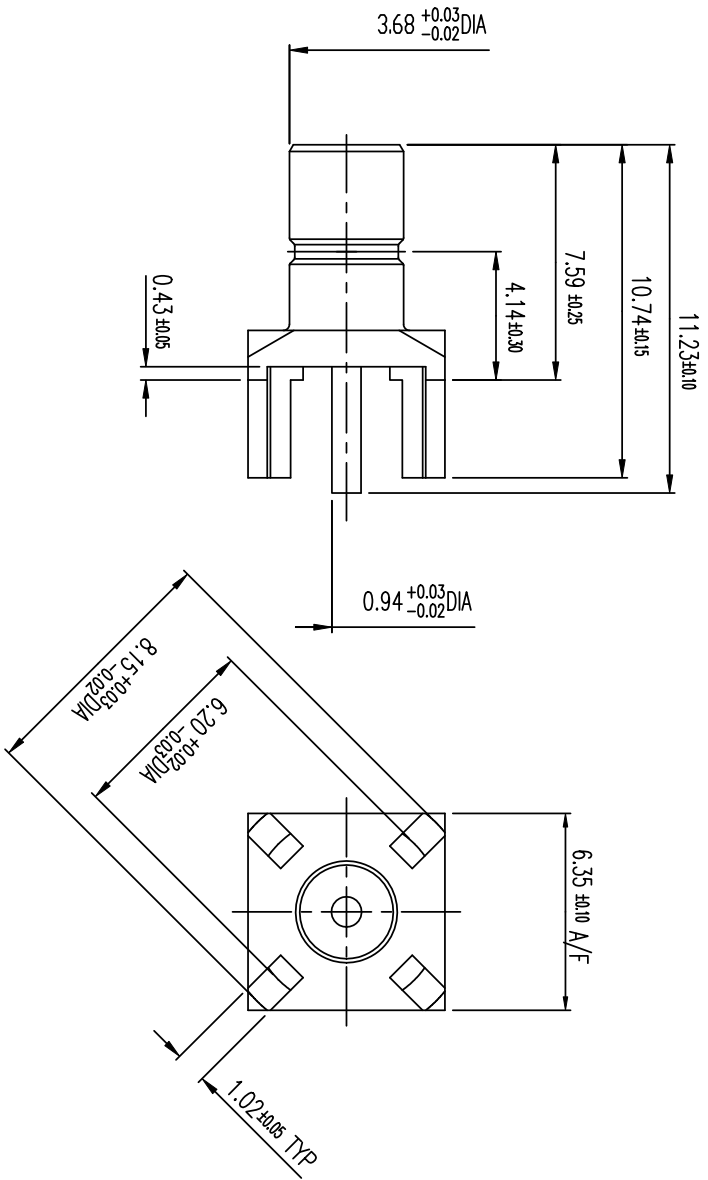


REVISIONS					
P	LR	DESCRIPTION	DATE	DMN	APD
A		REVISED PER ECR-19-017253	06NOV2019	ED	RS



ELECTRICAL	MECHANICAL	ENVIRONMENTAL
Nominal Impedance (Ohms) <u>50</u>	Interface Dimensions CECC 22 130	TEMPERATURE RATING -55C TO +155C
Frequency Range (GHz) DC to 4.0	Recommended Mating Torque <u>N/A</u>	
Volt Rating (VRMS MAX) <u>350</u>	Force to Engage and Disengage (Newtons MAX) <u>60</u>	
③ Sea Level <u>350</u>	Center Contact Captivation Axial (N) <u>N/A</u>	
caprona, 70,000Ft (MRS MIN)	Radial (Nm) <u>N/A</u>	
Dielectric Withstanding Voltage (VRMS MIN) ③ Sea Level <u>1,000</u>	Cable Retention Axial Force (N) <u>N/A</u>	
Contact Resistance (Milliohms MAX) <u>5.0</u>	Torque (Nm) <u>N/A</u>	
Center Contact <u>2.5</u>	Weight (Grams) <u>TBD</u>	
Outer Contact <u>2.5</u>		
cable to Housing <u>1,000</u>		
LR (Megohms MIN) <u>1,000</u>		

COMPONENT	MATERIAL	FINISH
BODY	BRASS	GOLD
MALE CONTACT	BRASS	GOLD
INSULATOR	PTFE	N/A

THIS DRAWING IS A CONTROLLED DOCUMENT.	
DMN	05JAN2010
APD	05JAN2010
CHK	KEVIN WEIDNER
APD	KEVIN WEIDNER
PRODUCT SPEC	
APPLICATION SPEC	
WEIGHT	0.000000
CUSTOMER DRAWING	

SIZE	DATE	DRAWING NO	RESTRICTED TO
A3	26805	1310851	