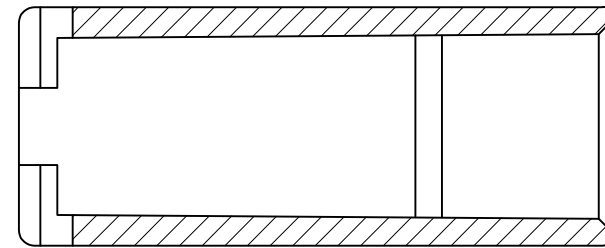


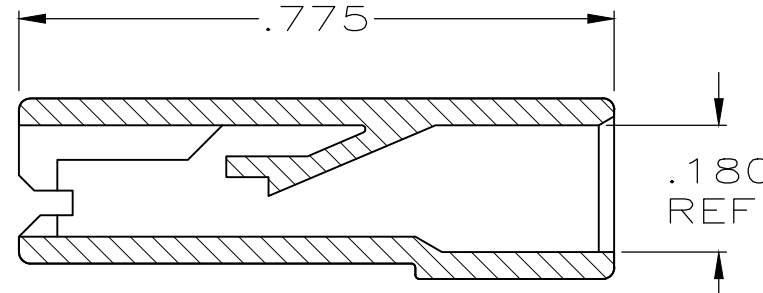
THIS DRAWING IS UNPUBLISHED. RELEASED FOR PUBLICATION
 © COPYRIGHT - By - ALL RIGHTS RESERVED.

| LOC | DIST | REVISIONS | | | | | |
|-----|------|-----------|-----|---------------------------|-----------|-----|------|
| | | P | LTR | DESCRIPTION | DATE | DWN | APVD |
| AF | 50 | | AA1 | REVISED PER ECR-18-019595 | 14DEC2018 | BKW | DS |

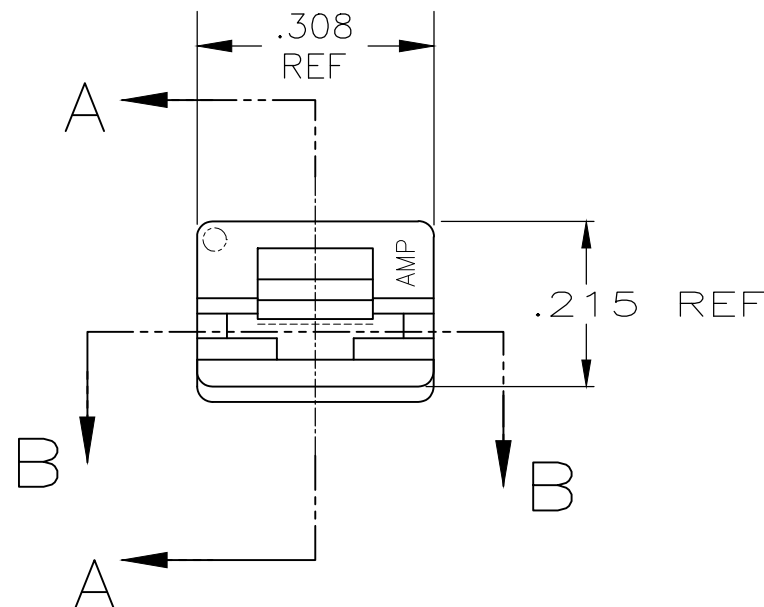
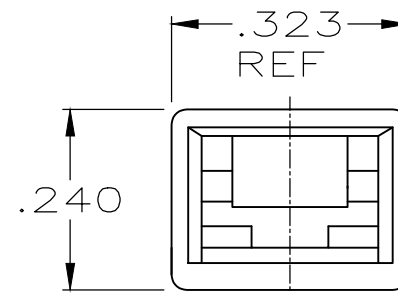
- 1 FOR FOREIGN PRODUCTION ONLY.
- 2 PRELIMINARY - NOT FOR PRODUCTION
- 3 POLYAMIDE ACCORDING TO IEC 60335-1, GLOW WIRE.
- 4 OBSOLETE PARTS: OBSOLETE CIS STREAMLINING PER D.RENAUD/D.SINISI
- 5 ACCEPTS 187 SERIES FASTONS BUDGET AND PREMIER STYLE RECEPTACLES
- 6 SUPERCEDE 2-480435-1 WITH 2-480435-3



SECTION B-B
ROTATED 90° CW



SECTION A-A



| | FINISH | MATERIAL | PART NO |
|--------------|--------------|----------------------|----------------|
| | BLACK | LCP-200°C | 2-480435-3 |
| | NATURAL | PA6 NYLON, V0 | 2-480435-2 |
| 6 SUPERCEDED | NATURAL | 3 66 NYLON, UL94, V0 | 2-480435-1 |
| | OBSOLETE | NATURAL | UL94 5VA RATED |
| | 1 NATURAL | 3 UL94, V2 | 1-480435-5 |
| 4 OBSOLETE | 1 NATURAL | 6/6 NYLON | 1-480435-4 |
| | 1 DYED BLACK | | 1-480435-3 |
| 4 OBSOLETE | 1 DYED RED | | 1-480435-2 |
| | 1 NATURAL | | 1-480435-0 |

| | | |
|---------|---------------|------------|
| NATURAL | 66 NYLON V0 | 3-480435-1 |
| BLACK | 66/6 NYLON V0 | 480435-2 |
| NATURAL | 66/6 NYLON V0 | 480435-1 |
| FINISH | MATERIAL | PART NO |

THIS DRAWING IS A CONTROLLED DOCUMENT.

| | | |
|------------------|-----------|--------|
| DWN | JR RUTH | 2/4/91 |
| CHK | P FORTNEY | 2/4/91 |
| APVD | R KUZO | 2/4/91 |
| PRODUCT SPEC | - | |
| APPLICATION SPEC | - | |
| WEIGHT | - | |

STE TE Connectivity

NAME: HOUSING, RECEPTACLE, FASTON, .187 SERIES

| | | | |
|------|-----------|------------|---------------|
| SIZE | CAGE CODE | DRAWING NO | RESTRICTED TO |
| A3 | 00779 | C-480435 | - |

CUSTOMER DRAWING SCALE: 4:1 SHEET: 1 OF 1 REV: AA1