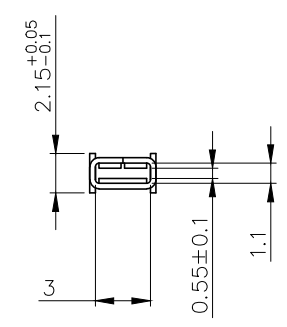
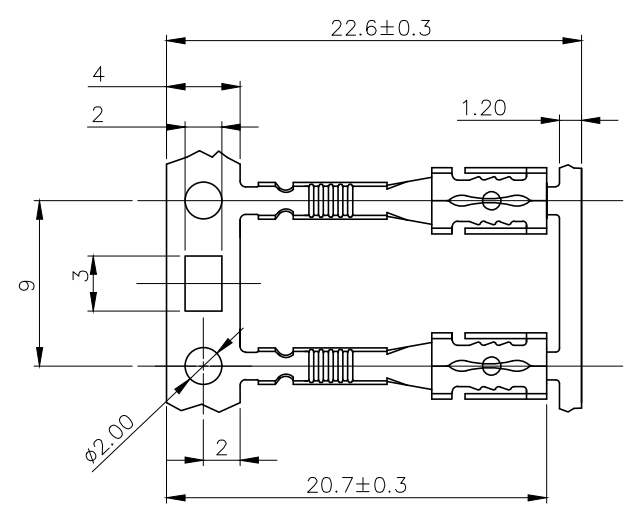
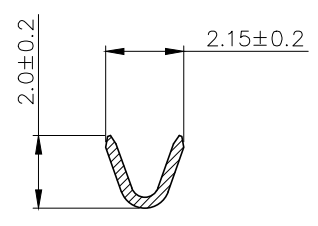
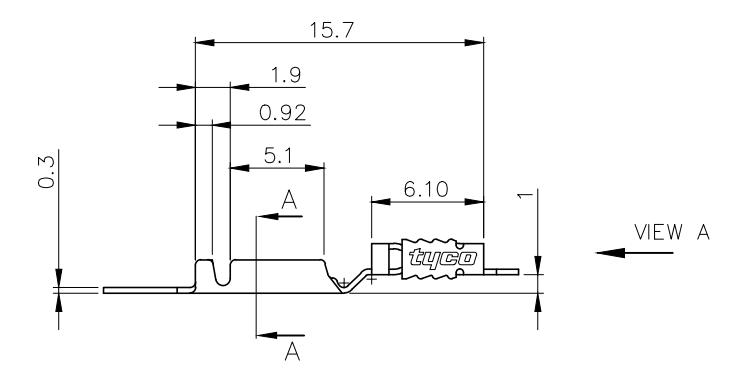


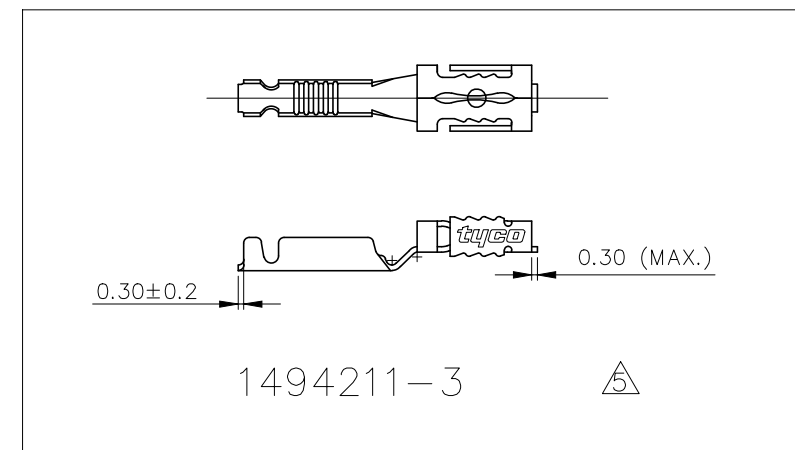
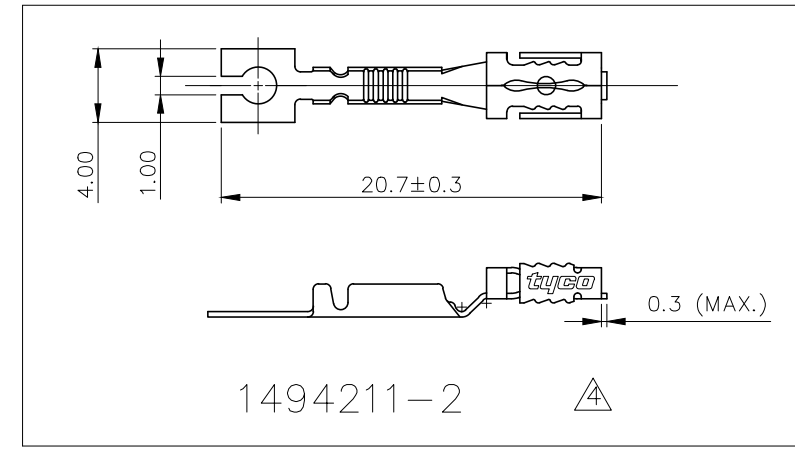
REVISIONS					
P	LTR	DESCRIPTION	DATE	DWN	APVD
	C2	REVISED PER ECR-20-003639	31MAR2020	PC	KR



VIEW A  
2:1

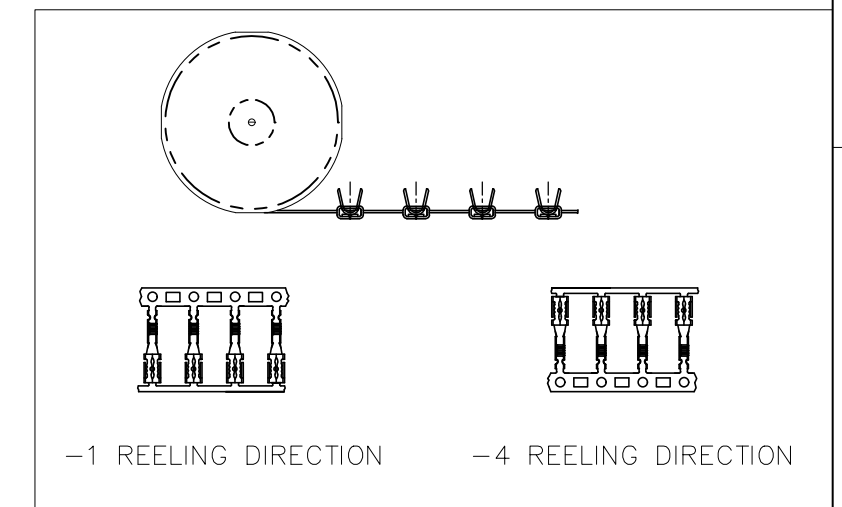


SECTION A-A  
2:1



NOTES:

- 1. MATERIAL: COPPER ALLOY.
- 2. APPLICATION DATA:  
ENAMEL WIRE:  $\phi$  0.45~0.75 mm
- 3. REVISED REEL OF 1494211-1.
- 4. CUT TO LOOSE PIECE.
- 5.
- 6. CRIMP WIDTH: 1.575mm, F TYPE,  
CRIMP HEIGHT( $\pm 0.05$ mm)= $0.7522+0.374*(\text{ENAMEL WIRE DIA.})^2$   
THE ENAMEL WIRE DIA INCLUDE INSULATION FILM THICKNESS.



CONTINUOUS STRIP ON REELS	3	BARE	1	1494211-4
LOOSE PIECE	5	BARE	1494211-1	1494211-3
LOOSE PIECE	4	BARE	1494211-1	1494211-2
CONTINUOUS STRIP ON REELS		BARE	1	1494211-1
PACKING OR REELING		FINISH	MATERIAL	P/N

THIS DRAWING IS A CONTROLLED DOCUMENT.		DWN 25.OCT.2002 BORIS WONG	TE Connectivity SIZE (2.8) AMPLIVAR FASTON RECPT.		
DIMENSIONS: mm		CHK 04.NOV.2002 BORIS WONG			
TOLERANCES UNLESS OTHERWISE SPECIFIED:		APVD 04.NOV.2002 S.F.SHUM	NAME		
0 PLC ± -		PRODUCT SPEC		108-58502	
1 PLC ± 0.2		APPLICATION SPEC		114-58502	
2 PLC ± 0.1		WEIGHT		0	
3 PLC ± -		SIZE		A3	
4 PLC ± -		CAGE CODE		00779	
ANGLES ± -		DRAWING NO		C-1494211	
FINISH		RESTRICTED TO		-	
SEE TABLE		SCALE		1:1	
		SHEET		1 OF 1	
		REV		C2	