

SCALA NON IMPEGNATIVA
(DO NOT SCALE)
DIMENSIONI IN mm
(DIMENSIONS IN mm)

METRIC

THIRD ANGLE
PROJECTION

1) STATO DI FORNITURA - SCALA 1:1
(SUPPLY CONDITION - SCALE 1:1)

SENDO DI USCITA
DEL TERMINALE
DALLA BOBINA
(DIRECTION OFF
TOP OF REEL)



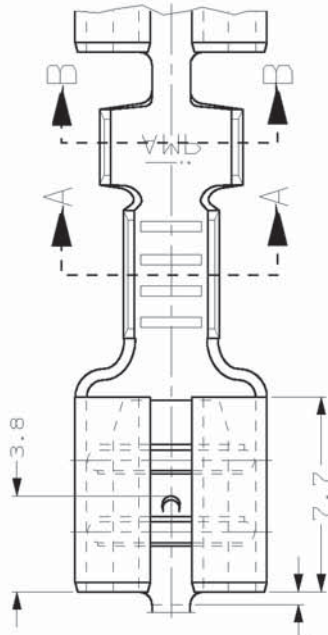
2) SPECIFICA DI PRODOTTO 108-20019
(PRODUCT SPEC. 108-20019)

SPECIFICA DI APPLICAZIONE 114-20023
(APPLICATION SPEC. 114-20023)

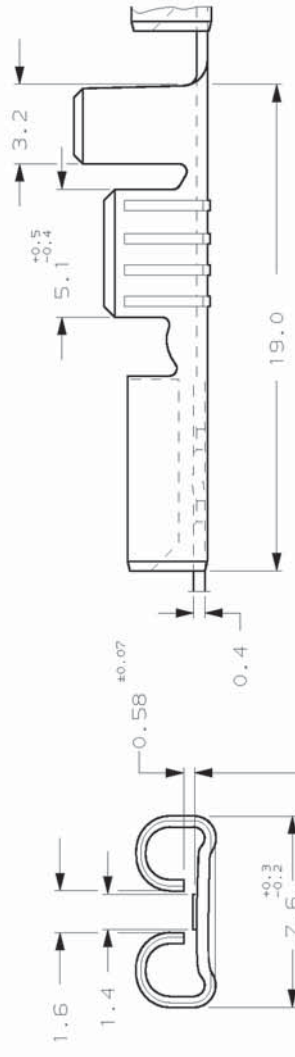
3) PER LE VERSIONI IN PEZZI SCIOLTI
VEDERE DISEGNO 160304
(FOR LOOSE PIECE VERSION SEE DRAWING 160304)

4) 115-16-1, GIUNZIONE MEDIANTE SALDATURA
(115-16-1, SPLICE FREE)

5) BOBINATO CON CARTA INTERPOSTA
(REELLED WITH INTERLEAVE PAPER STRIP)

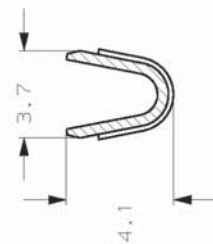


0.5 MAX.
TESTIMONE DI TAGLIO
(CUT-OFF DIMENSION)

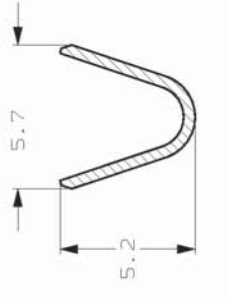


for 0.8 mm tab
thickness.

SEZIONE A-A
(SECTION A-A)



SEZIONE B-B
(SECTION B-B)



5	NUDO (UNPLATED) ARGENTATO (SILVER PLATED)	BRONZO F05, (PH. BRONZE)	4-160256-9 CU
	NUDO (UNPLATED)	OTTONE (BRASS)	4-160256-7 CU
5	PRE NICHELATO (PRE NICKEL PLATED)	BRONZO F05, (PH. BRONZE)	4-160256-5 CT
	STAGNATO (TIN PLATED)	ACCIAIO (STEEL)	4-160256-2 CT
	NUDO (UNPLATED)	BRONZO F05, (PH. BRONZE)	3-160256-1 CT
5	STAGNATO (TIN PLATED)	BRONZO F05, (PH. BRONZE)	2-160256-8 CT
	NUDO (UNPLATED)	OTTONE (BRASS)	2-160256-2 CU
	PRE NICHELATO (PRE NICKEL PLATED)	OTTONE (BRASS)	2-160256-1 CT
	FINITURA / COLORE (FINISH / COLOUR)	ACCIAIO (STEEL)	0-160256-5 CT
NOTE		MATERIALE (MATERIAL)	NUMERO (AMP P/N)

CUSTOMER DWG.
FOR REFERENCE ONLY

THIS DRAWING IS UNPUBLISHED
RELEASE FOR PUBLICATION 19

© COPYRIGHT BY AMP INCORPORATED, HARRISBURG, PA. ALL INTERNATIONAL RIGHTS RESERVED. THIS DRAWING IS UNPUBLISHED.
TOLERANCES: SEE NON DIMENSIONAL SPECIFICATION
DIVERSAMENTE SPECIFICATO
(UNLESS OTHERWISE SPECIFIED)

3.0-4.3mm DIA. 1.0-2.5 mm2 5:1

AMP
AMP ITALIA S.P.A.
Corso F.lli Cervi, 15
Colleferro (FR)

DESCRIZIONE
DESCRIPTION: **FASTON® Connector,**
.250" SF. REC. CONTACT.

LOC. SIZE NUMERO
SITE NO. REV. FOLGLO
(APP.) (REV.) (SHEET)

I A3 C-160256 CUS 1 (APP.) (REV.) (SHEET)

DISTRIBUZIONE
(PRINT DISTR.)