

THIS DRAWING IS UNPUBLISHED.

RELEASED FOR PUBLICATION FEB , 2006.

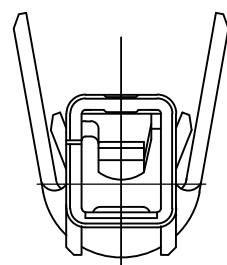
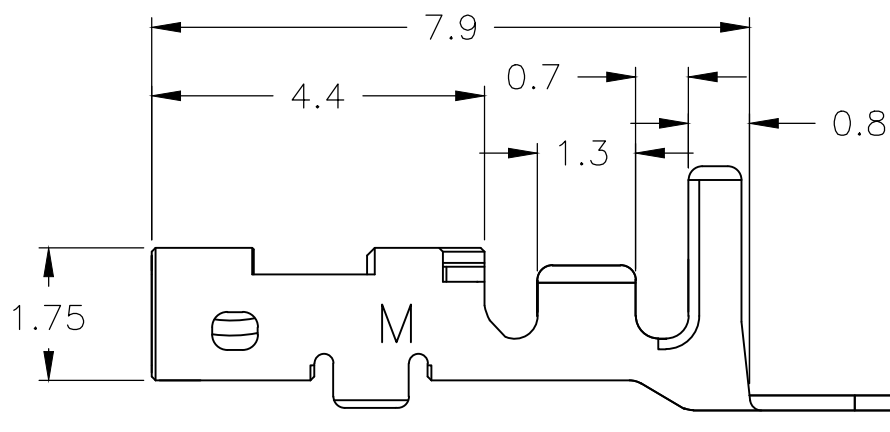
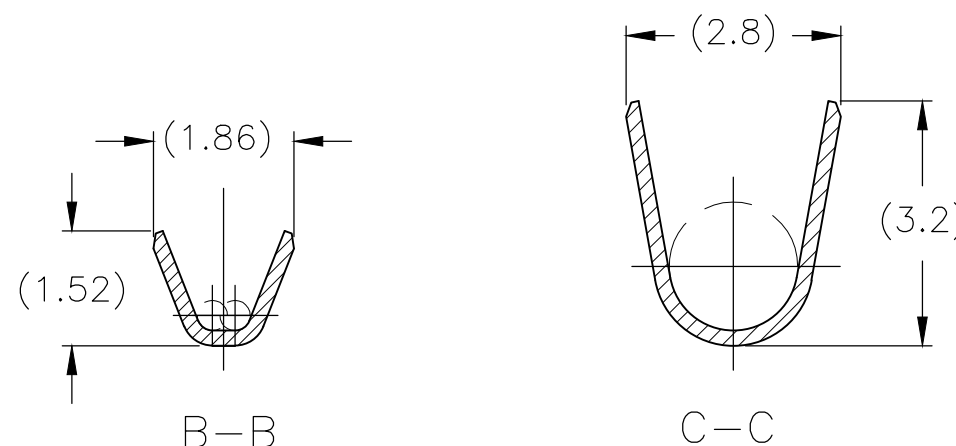
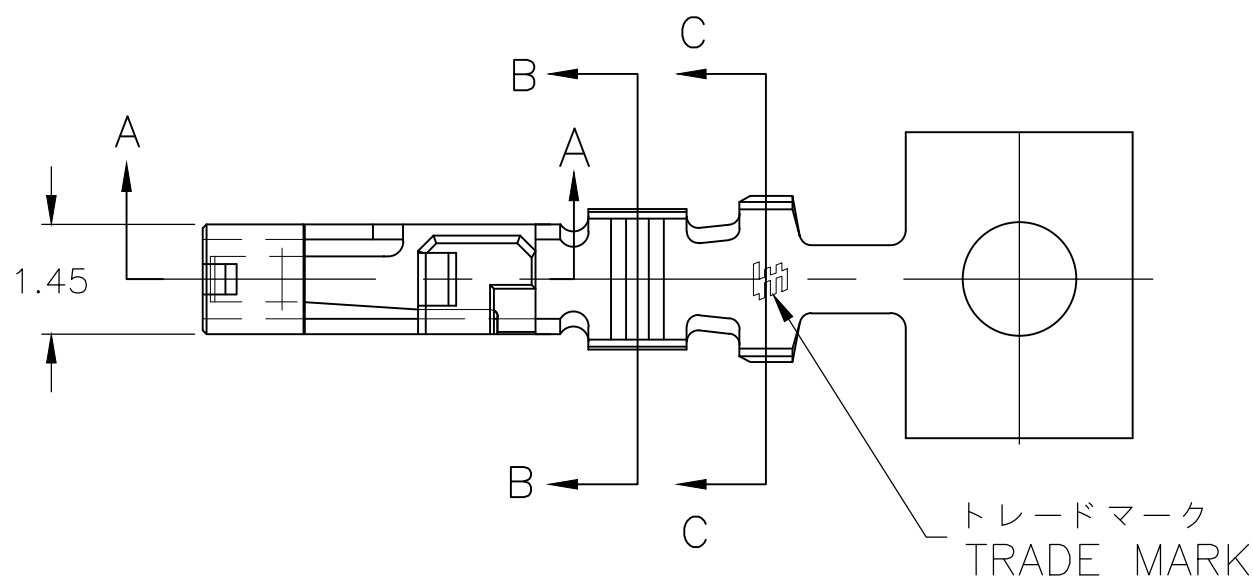
© COPYRIGHT 2006 TE Connectivity Ltd.

ALL RIGHTS RESERVED.

REVISIONS

変更

P	LTR	DESCRIPTION	DATE	DWN	APVD
	E	REVISED PER ECR-19-015859	18Nov2019	C.X	D.Z



1 適用プラグ・ハウジング型番
X-1747066-X

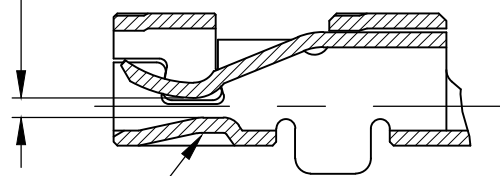
△ 高接点圧タイプ

1 APPLICABLE PLUG HOUSING P/N
X-1747066-X

△ HIGH PRESSURE TYPE

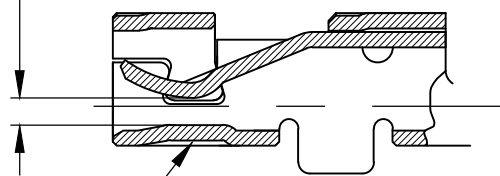
△ DIFFERENT DIMPLE TYPE

MATING PIN
DIMENSION IS 0.50



A-A
ONLY FOR 1871859-3

MATING PIN
DIMENSION IS 0.50



A-A
FOR 1871859-1&-2

AWG#28~#22 0.079~0.38mm2	φ1.08~φ1.9	PRE-TIN COPPER ALLOY	1871859-3 △
AWG#28~#22 0.079~0.38mm2	φ1.08~φ1.9	PRE-TIN COPPER ALLOY 錫めっき済銅合金	1871859-2 △
AWG#28~#22 0.079~0.38mm2	φ1.08~φ1.9	PRE-TIN COPPER ALLOY 錫めっき済銅合金	1871859-1
WIRE RANGE 導体断面積	INSULATION DIA 被覆外径	MATERIAL 材料	PART NO. 型番

THIS DRAWING IS A CONTROLLED DOCUMENT.

DWN J.SATO 21FEB2006

CHK N.YAMASAKI 21FEB2006

APVD N.YAMASAKI 21FEB2006

PRODUCT SPEC
製品規格

108-78307

APPLICATION SPEC
取付適用規格

114-5359

WEIGHT 0.000000

CUSTOMER DRAWING

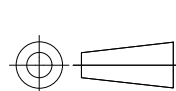
NAME 名称
GRACE INERTIA CONNECTOR 2.5
REC CONTACT TIN PLATE TYPE M TYPE

SIZE A3 CAGE CODE 00779 DRAWING NO 番号 C-1871859 RESTRICTED TO

SCALE 尺度 10:1 SHEET 1 OF 1 REV E

DIMENSIONS:
単位: 概 mm

TOLERANCES UNLESS
OTHERWISE SPECIFIED:
一般公差



0 PLC	± 0.3
1 PLC	± 0.2
2 PLC	± 0.15
3 PLC	±
4 PLC	±
ANGLES	±

MATERIAL 材料
SEE TABLE

FINISH 仕上