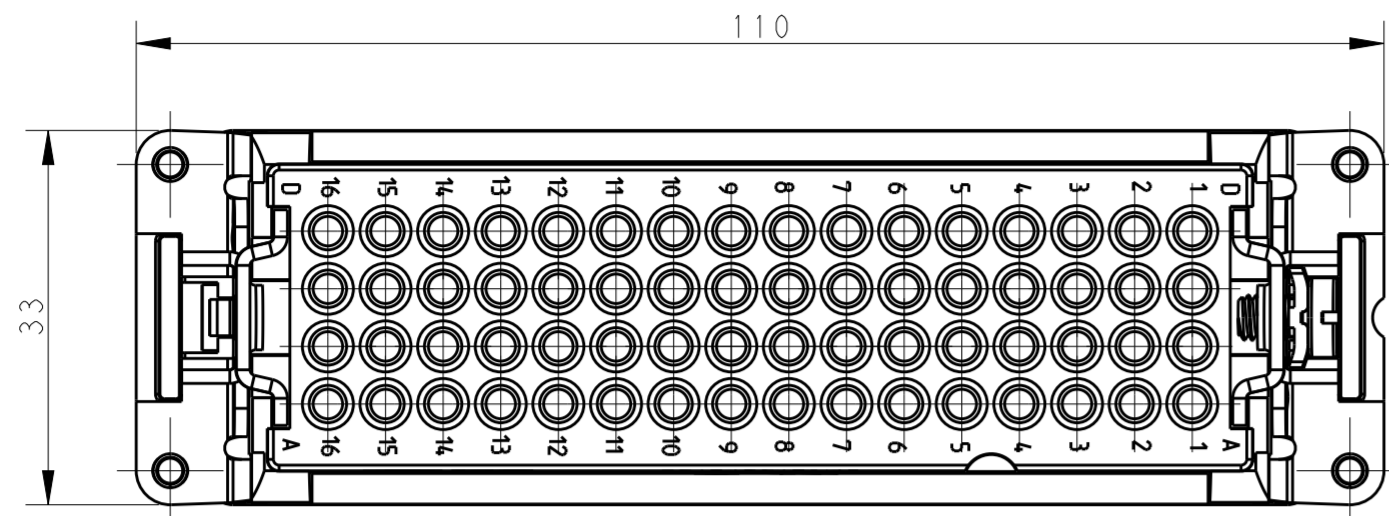
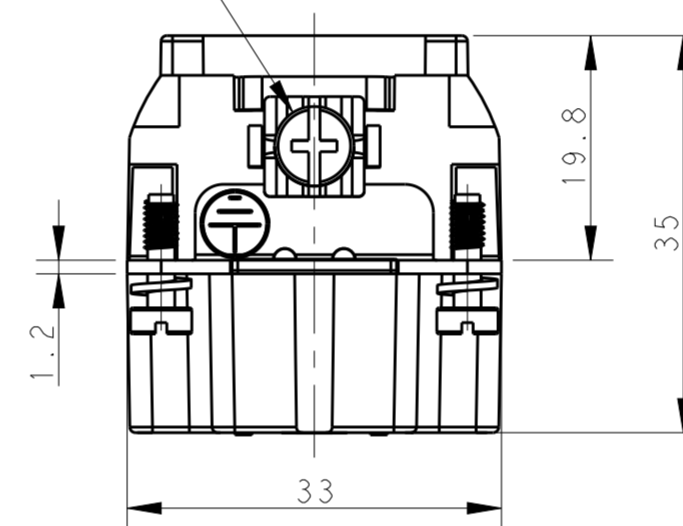


P	LTR	DESCRIPTION	DATE	DWN	APVD
B		ECR-20-005011	06APR2020	QY	JB

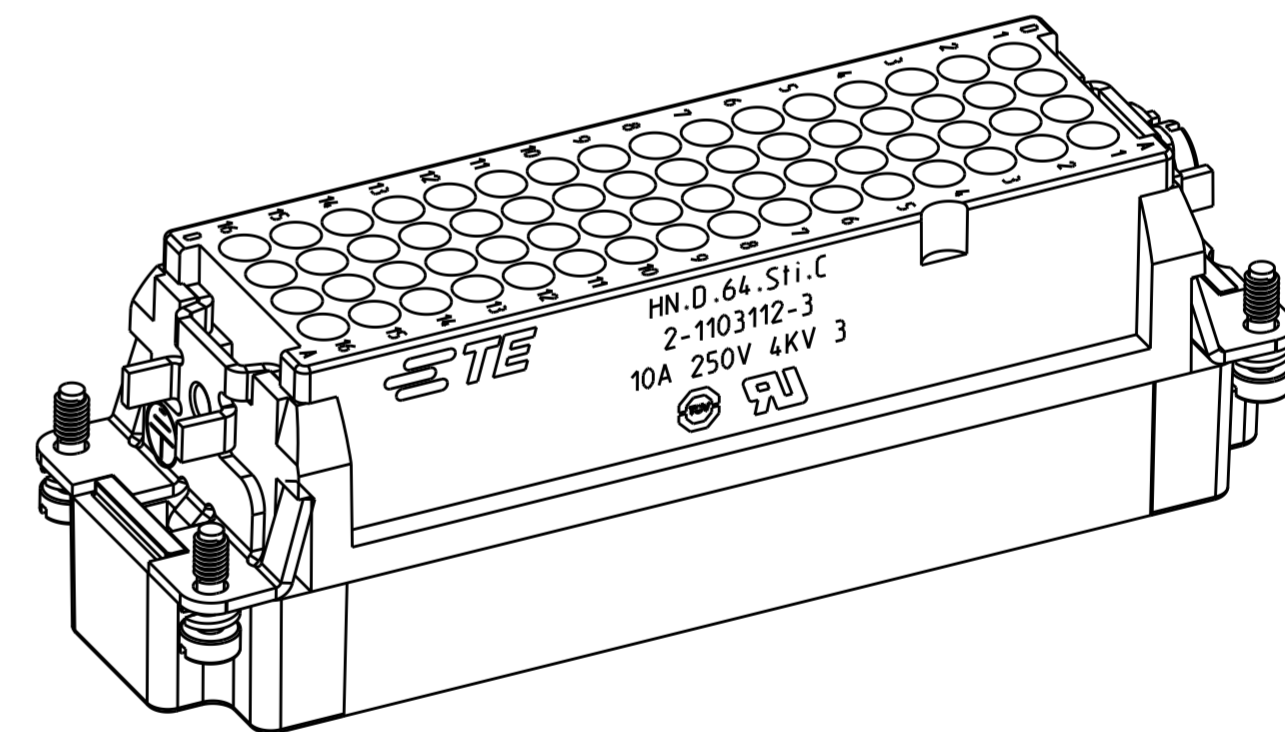
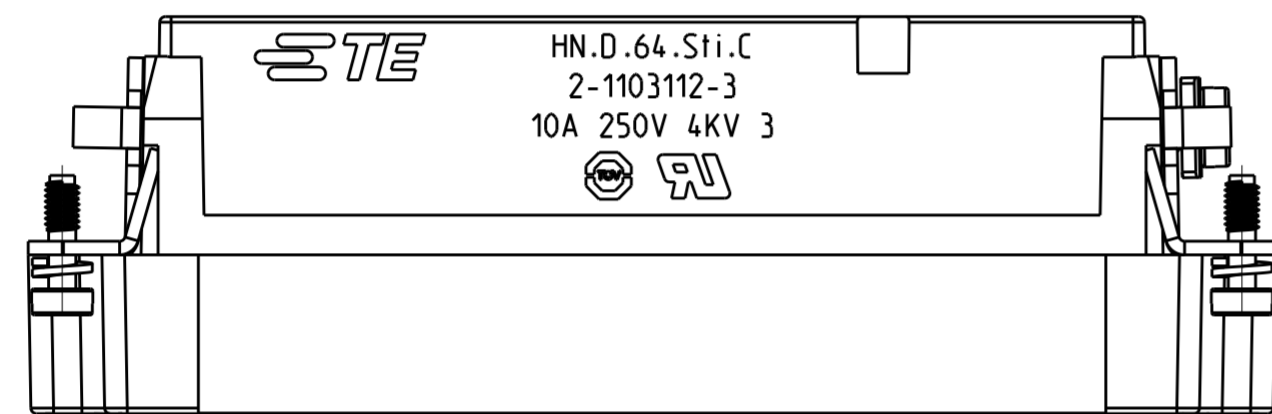


NOTES:  
 1. TECHNICAL CHARACTERISTICS:  
 INSULATION MATERIAL: PC  
 RATED VOLTAGE: 250V  
 RATED CURRENT: 10A  
 RATED IMPULSE VOLTAGE: 4KV  
 POLLUTION DEGREE: 3  
 WIRE RANGE: 0.14mm<sup>2</sup>~2.5mm<sup>2</sup> (AWG26-AWG14)  
 2. CONTACT NEED TO BE ORDERED SEPARATELY.

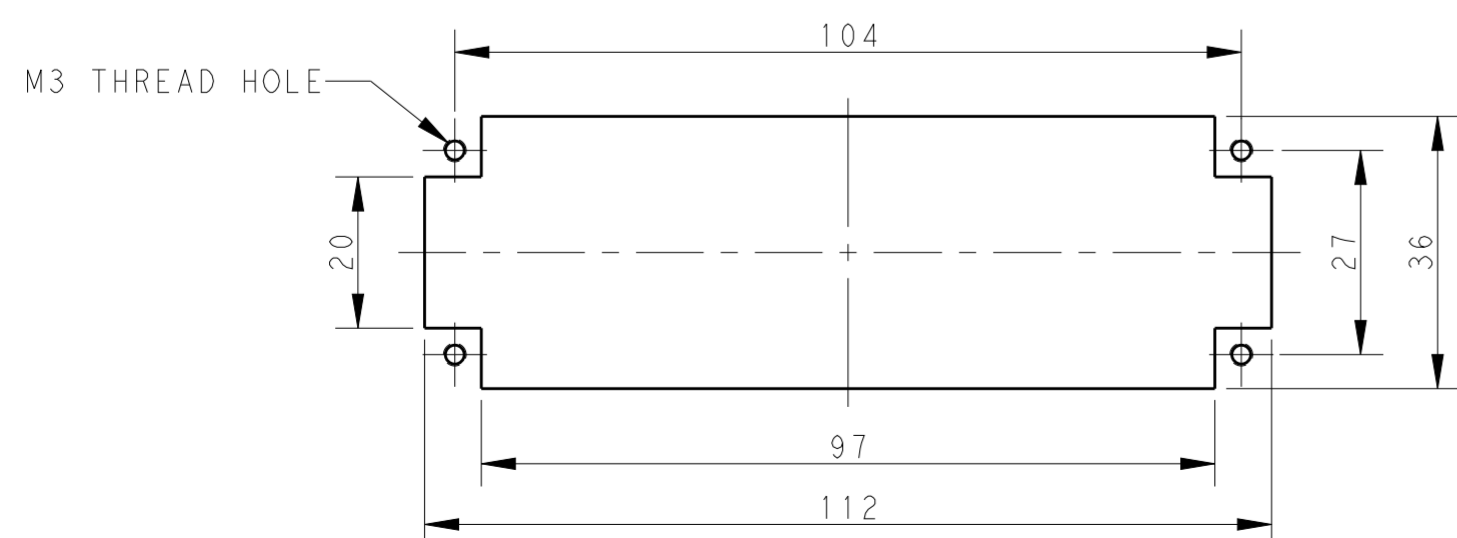
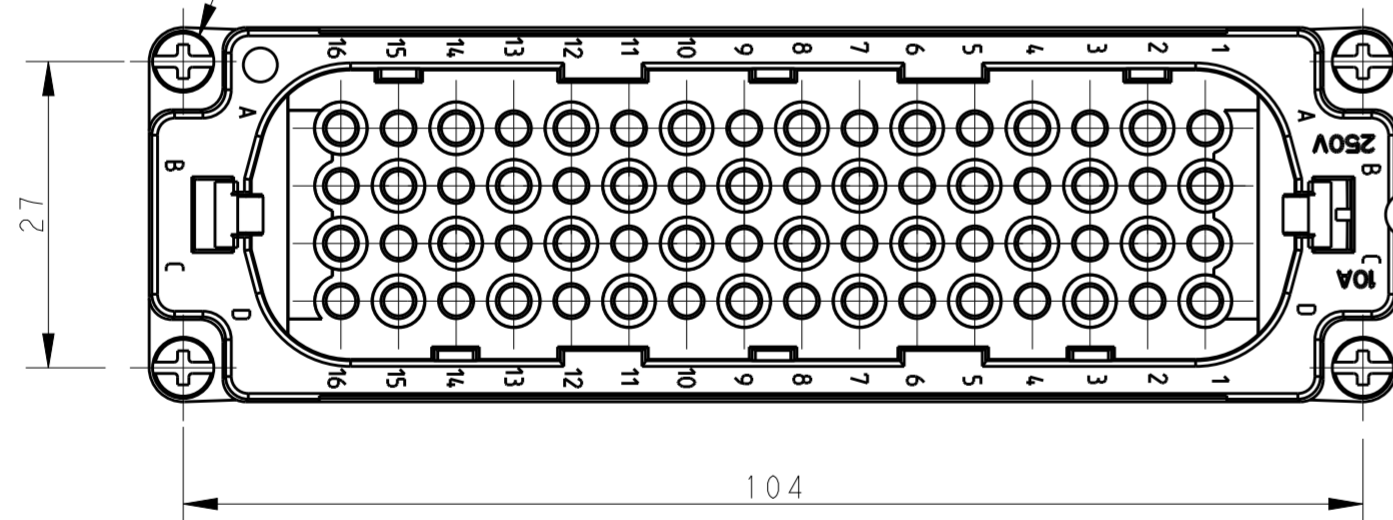
M4 SCREW RECOMMENDED  
 TIGHTENING TORQUE 1.2Nm  
 M4螺丝, 推荐锁紧力矩1.2Nm



注释:  
 1. 技术参数:  
 绝缘材料: PC  
 额定电压: 250V  
 额定电流: 10A  
 脉冲电压: 4KV  
 污染等级: 3  
 接线范围: 0.14mm<sup>2</sup>~2.5mm<sup>2</sup> (AWG26-AWG14)  
 2. 端子需要单独订购.



4X M3 SCREW  
 RECOMMENDED TIGHTENING TORQUE 0.5Nm  
 4X M3 螺丝, 推荐锁紧力矩0.5Nm



PANEL CUT FOR INSERTS FOR USE  
 WITHOUT HOODS/ HOUSINGS  
 不使用防护外壳时零件的安装开孔图

2-1103112-3	HN.D.64.Sti.C	HD-064 MALE INSERT FOR MACHINED CONTACT TYPE HD-064 公插, 车削针型(HTS)
PART NUMBER 料号	PART DESCRIPTION 描述	
THIS DRAWING IS A CONTROLLED DOCUMENT.		
DIMENSIONS: mm		DWN 08 JAN 2020 CHK 08 JAN 2020 APVD 08 JAN 2020 KOMAR MARCIN
TOLERANCES UNLESS OTHERWISE SPECIFIED: 0 PLC ± 1 PLC ± 2 PLC ± 3 PLC ± 4 PLC ± ANGLES ± FINISH		NAME HN.D.64.Sti.C
MATERIAL		PRODUCT SPEC 108-74002
		APPLICATION SPEC 114-74000
		WEIGHT
		CUSTOMER DRAWING
		SCALE 3:2
		SHEET 1 OF 1
		REV B