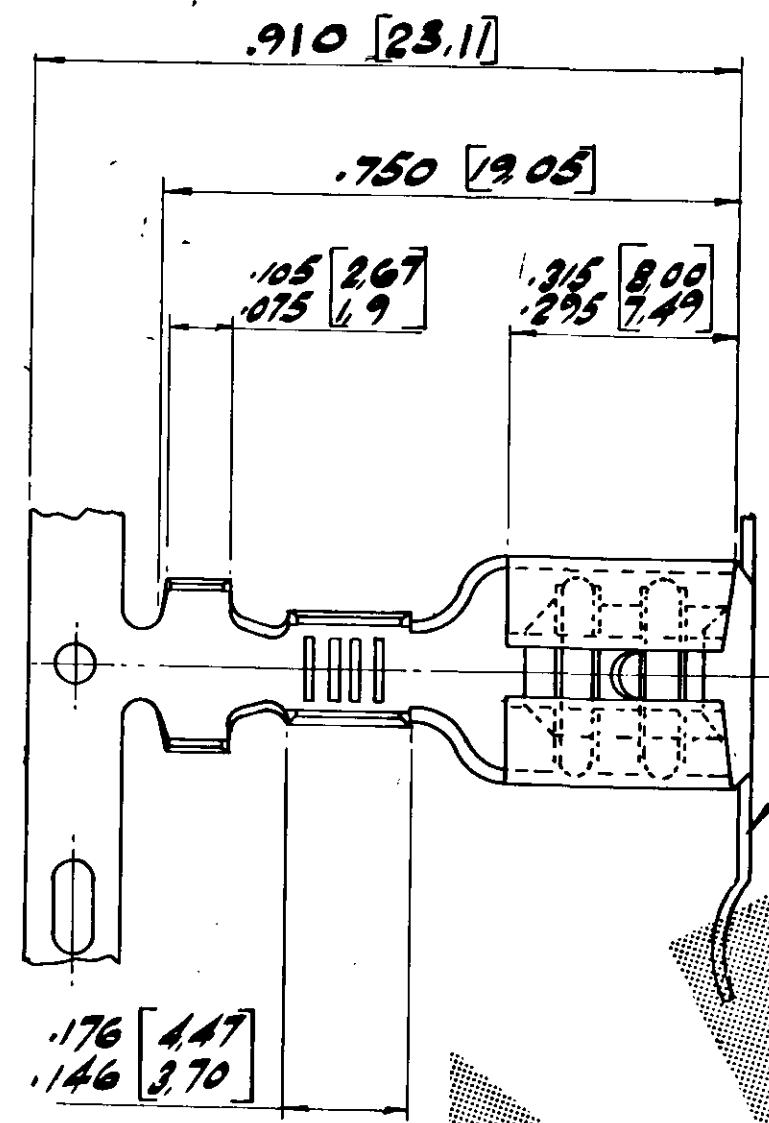


DO NOT SCALE
DIMENSIONS IN

3rd ANGLE PROJECTION



PART NO	MATERIAL	FINISH	REMARKS	PART NO	MATERIAL	FINISH	REMARKS
2-150645-6	BRASS	ELECTRO-TIN	NO CARRIER	1-150645-1	PHOS. BRONZE	NONE	
				150645-2	BRASS	NONE	
				OBSOLETE 150645-3	BRASS	PRE-TIN	
				150645-4	STEEL	NONE	
				150645-5	STEEL	NICKEL	OBSOLETE
				150645-6	PHOS. BRONZE	PRE-TIN	NO REAR
				150645-7	STEEL	ELECTRO-TIN	CARRIER
				OBSOLETE 150645-8	PHOS. BRONZE	SILVER	STRIP
				150645-9	NICKEL SILVER	NONE	
				OBSOLETE 1-150645-0	BRASS	ELECTRO-TIN	
				OBSOLETE 1-150645-1	PHOS. BRONZE	ELECTRO-TIN	
				2-150645-1	PHOS. BRONZE	NONE	
				2-150645-2	BRASS	NONE	
				2-150645-3	BRASS	PRE-TIN	
				OBSOLETE 2-150645-4	PHOS. BRONZE	PRE-TIN	
				2-150645-5	NICKEL SILVER	NONE	
				3-150645-1	PHOS. BRONZE	NONE	
				3-150645-2	BRASS	NONE	
				3-150645-3	BRASS	PRE-TIN	WITH REAR
				3-150645-4	STEEL	NONE	CARRIER
				OBSOLETE 3-150645-5	STEEL	NICKEL	STRIP
				3-150645-6	PHOS. BRONZE	PRE-TIN	
				3-150645-7	STEEL	ELECTRO-TIN	
				3-150645-8	PHOS. BRONZE	SILVER PLATE	
				3-150645-9	NICKEL SILVER	NONE	
				4-150645-0	BRASS	ELECTRO-TIN	
				4-150645-1	PHOS. BRONZE	ELECTRO-TIN	

SIDES OF 'U' TO BE THE SAME HEIGHT WITHIN .015 [0.38]

SEE "REMARKS" ON THIS CARRIER

.035 [0.89] MAX. PERMISSIBLE AT EDGES OF TAB

.034 [0.86]
.030 [0.76]

.235 [5.96]
.210 [5.33]

.165 [4.19]
.133 [3.37]

.100 [2.54]
.080 [2.03]

FITS .032 [0.81] TAB.

.310 [7.87]
.290 [7.36]

.322 [8.18]
.300 [7.62]

.134 [3.4]

.020 [0.51]

1 OBSOLETE PARTS: OBSOLETE CIS STREAMLINING PER D.RENAUD/D.SINISI

OTHER TREATMENT		FINISH		MATERIAL		PART NUMBER	
				SEE TABLE ABOVE		C/50645-1	
CUSTOMER DWG FOR REFERENCE ONLY				THIS DRAWING IS UNPUBLISHED RELEASED FOR PUBLICATION			
TOLERANCES UNLESS OTHERWISE STATED:-				INS. DIA. RANGE		WIRE RANGE	
DEC ± .015 [0.38]				.120 - .170		18 - 14	
ANGLES ± 1°				SCALE 4:1			
DR. PE-DRAWN/ C.F. SLOUGH				TE Connectivity			
CHK. D. ALLEN 5/12/83				NAME WIRE TERMINAL			
APP. David Allen 5/12/83				250 SERIES FASTON PIGGY BACK.			
REV	REVISION RECORD	DR/APP	DATE	APB	LOC.	DWG. NO.	REV. SHEET
T2	REVISED PER ECR-15-016346	NK/LP	09MAY2016	CHK.	A2	E C-150645	T2 1 of 1