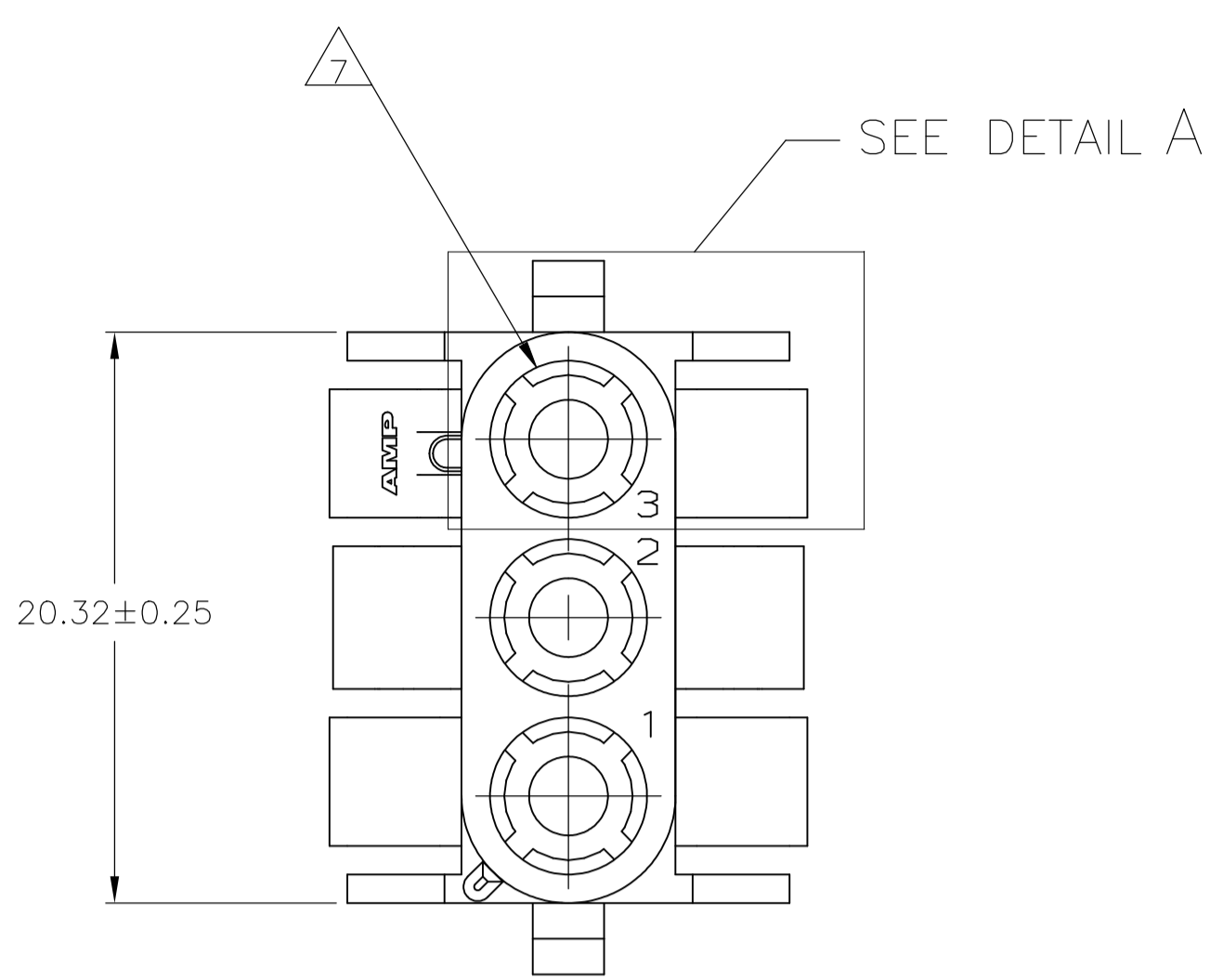
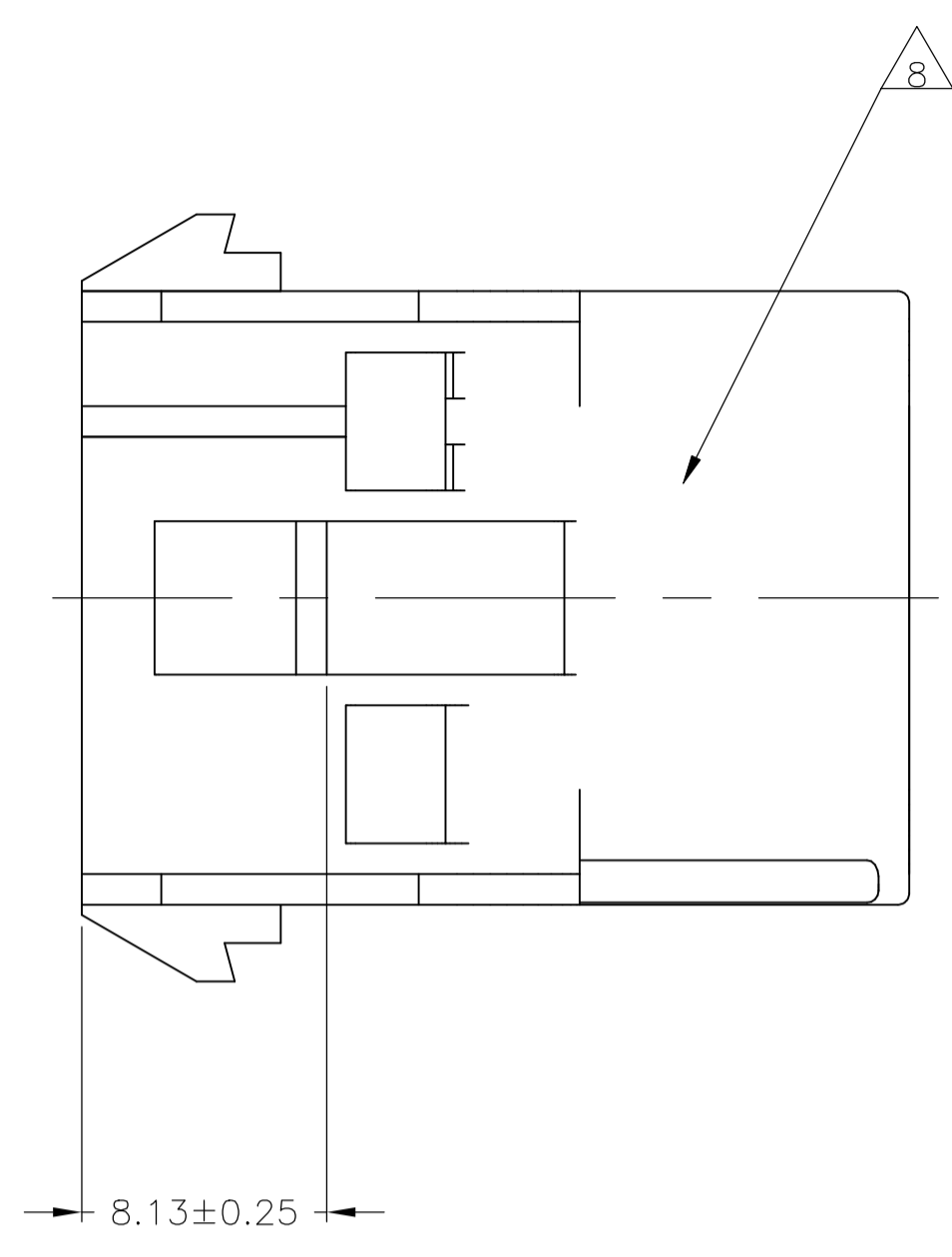
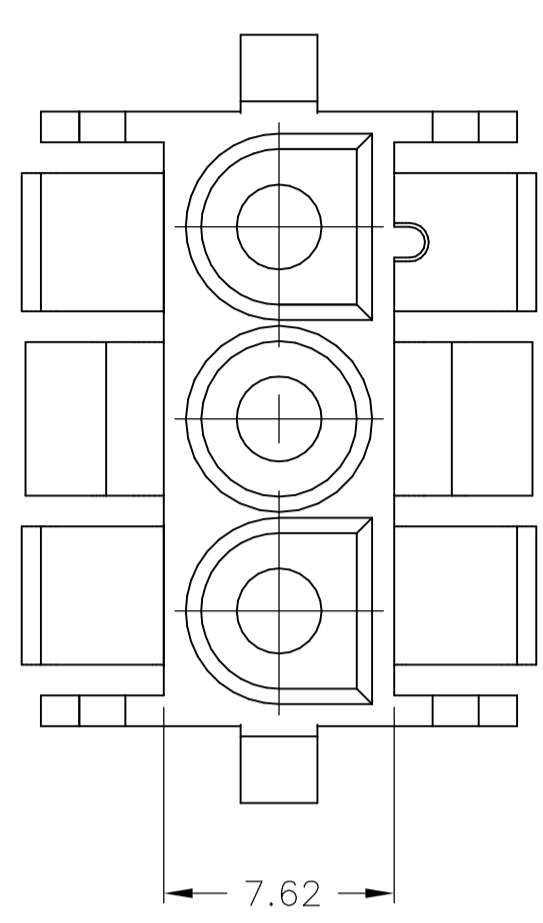
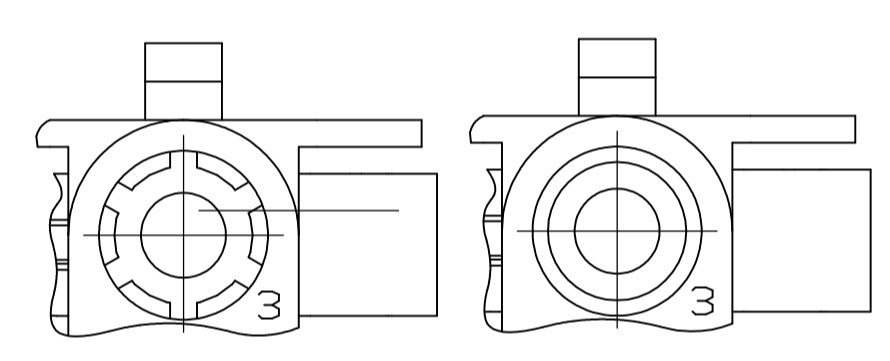


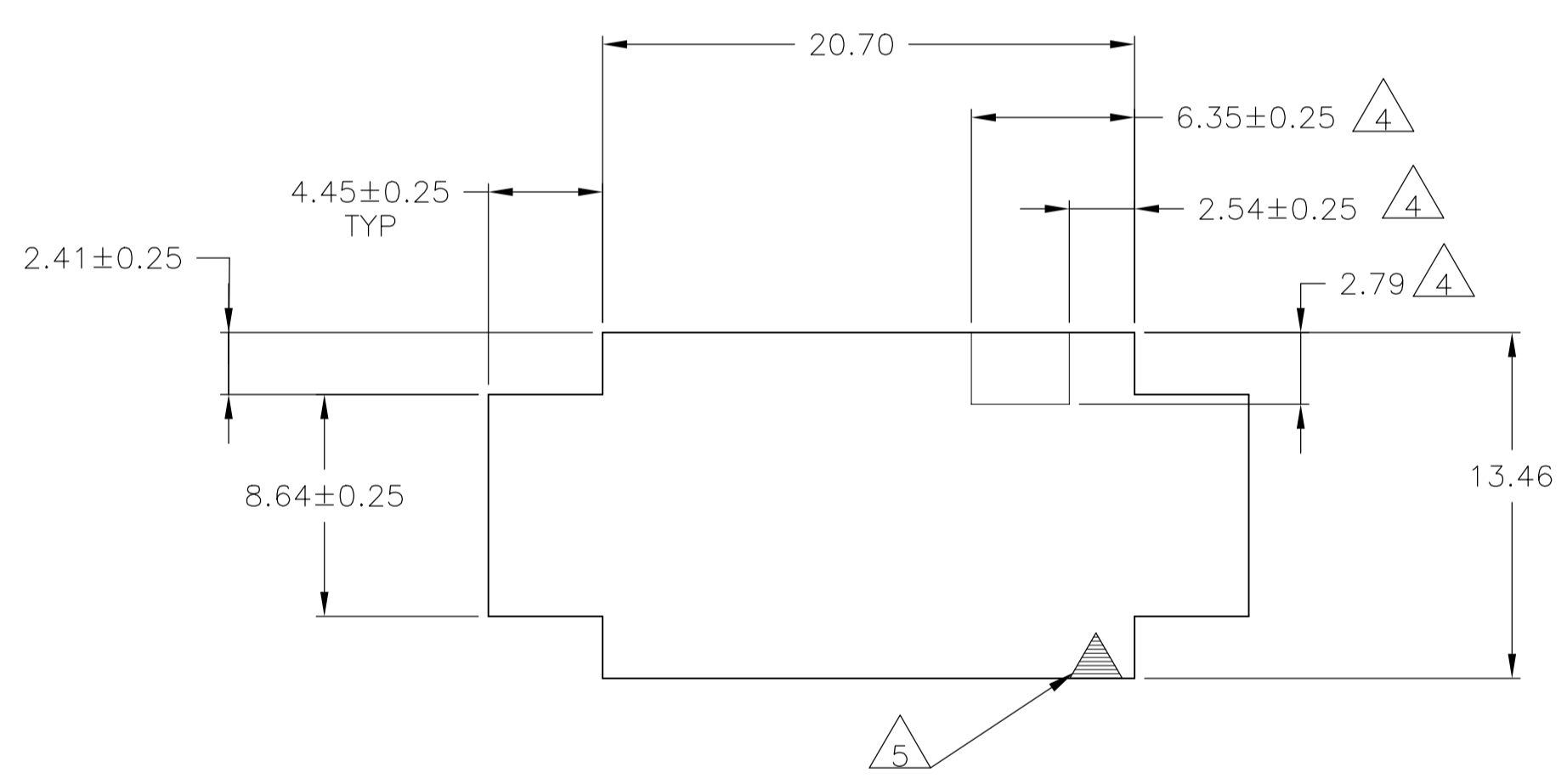
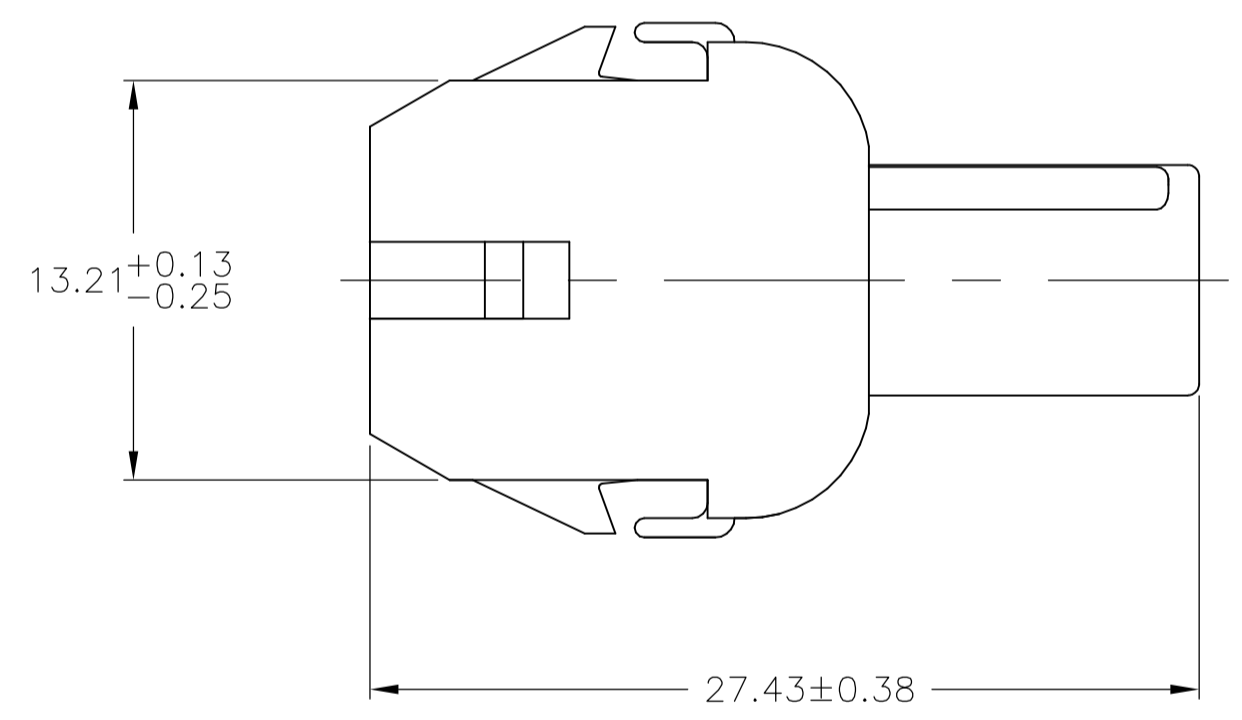
REVISIONS				
P	LTR	DESCRIPTION	DATE	DWN   APVD
A2		REVISED PER ECR-17-015922	07NOV2017	BDA   KR



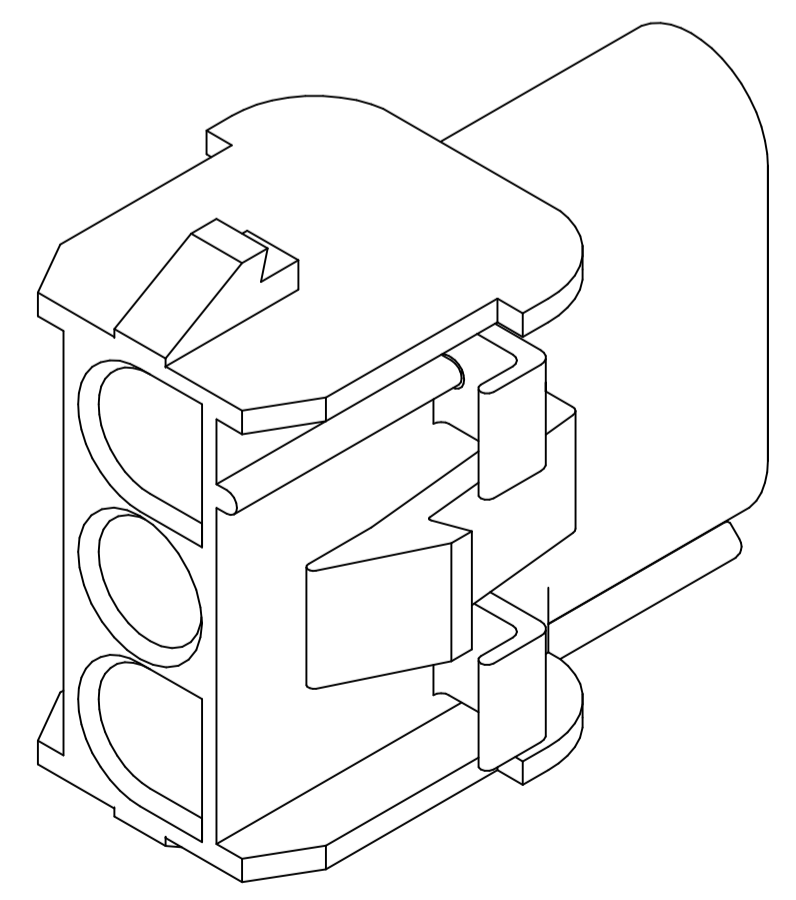
1. MATES WITH APPROPRIATE UNIVERSAL MATE-N-LOK™ PLUG.
2. RECOMMENDED PANEL THICKNESS 0.76 - 2.29.
3. PANEL MUST BE PUNCHED SO THAT THE HOUSING ENTERS THE PANEL IN THE SAME DIRECTION AS THE PUNCH.
4. OPTIONAL FOR KEYING HOUSING IN PANEL.
5. CIRCUIT NUMBER 1 LOCATION.
6. DIMENSIONS SHOWN REPRESENT PRODUCT IN DRY, AS MOLDED, CONDITION. ADDITIONAL 2% GROWTH DUE TO SUBSEQUENT MOISTURE ABSORPTION MAY OCCUR AND SHOULD BE ACCOUNTED FOR.
7. FOUR RIBS EQUALLY SPACED, NO SPECIFIC ORIENTATION. NO RIBS OR SIX RIBS EQUALLY SPACED, NO SPECIFIC ORIENTATION, OPTIONAL.
8. UNDERWRITERS RECOGNIZED COMPONENT LOGO TO BE LOCATED ONCE EACH ON SIDE OF HOUSING.
9. MATERIAL CORRESPONDING TO THE REQUIREMENT OF IEC60335-1 (INCL. GLOW WIRE TEST 750° C WITHOUT FLAME)
10. PRELIMINARY PART NOT RELEASED FOR PRODUCTION.



DETAIL A  
OPTIONAL CONSTRUCTION



RECOMMENDED PANEL CUT OUT



3-DIMENSIONAL MODEL  
NTS

4.45	.175	27.43	1.080
2.79	.110	20.70	.815
2.54	.100	20.32	.800
2.41	.095	13.46	.530
2.29	.090	13.21	.520
0.76	.030	8.64	.340
0.38	.015	8.13	.320
0.25	.010	7.62	.300
0.13	.005	6.35	.250
MM	IN	MM	IN

CONVERSION TABLE

NATURAL	PA 66 UL94V-0 (GWT 750°C NO FLAME)	2178474-2
NATURAL	PA6 UL94V-0	2178474-1
COLOR	MATERIAL	PART NUMBER

THIS DRAWING IS A CONTROLLED DOCUMENT.

DIMENSIONS:	TOLERANCES UNLESS OTHERWISE SPECIFIED:	DWN	24JUN2013
mm	0. PLC ± -	MGT	24JUN2013
	1. PLC ± -	CHK	24JUN2013
	2. PLC ± 0.13	R.P.	24JUN2013
	3. PLC ± -	R.P.	24JUN2013
	4. PLC ± -	NAME	CAP.3 CIRCUIT, UNIVERSAL MATE-N-LOK™
	ANGLES ± 1°	PRODUCT SPEC	
		APPLICATION SPEC	
MATERIAL	FINISH	SIZE	CAGE CODE
SEE TABLE	-	A1	00779
		DRAWING NO	2178474
		WEIGHT	
		CUSTOMER DRAWING	
		SCALE	4:1
		SHEET	1 OF 1
		REV	A2