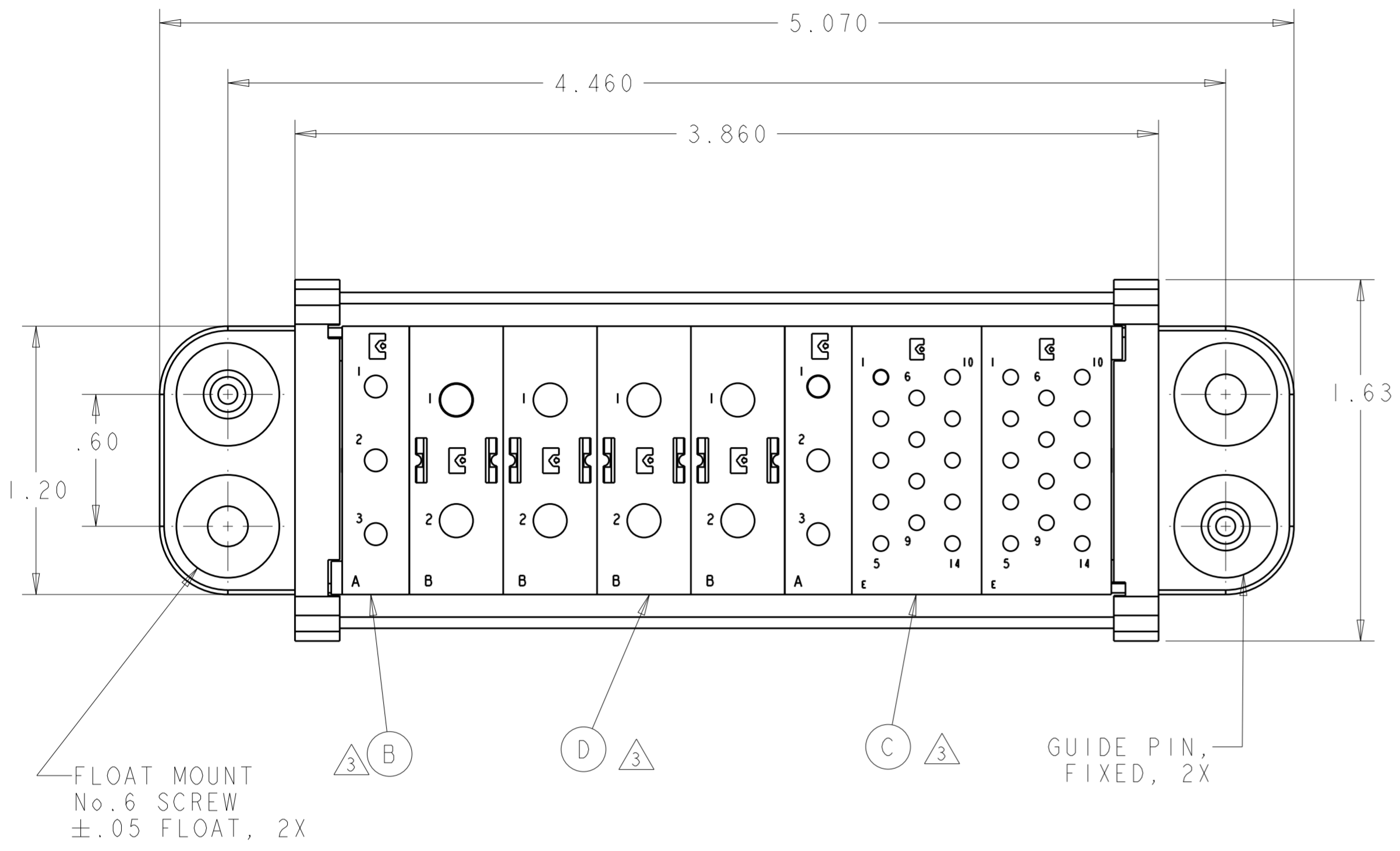


THIS DRAWING IS UNPUBLISHED. RELEASED FOR PUBLICATION 20
 © COPYRIGHT 20 BY - ALL RIGHTS RESERVED.

LOC	DIST	REVISIONS					
GP	00	P	LTR	DESCRIPTION	DATE	DWN	APVD
		A		ORIGINAL	31OCT2012	CJV	DPO



1. PART NUMBER CHANGES AND/OR DESIGN CHANGES AFFECTING ITEM INTERCHANGEABILITY REQUIRE PRIOR TYCO ELECTRONICS APPROVAL AND AUTHORIZATION BY REVISION TO THIS DRAWING.

2. ITEMS PROVIDED TO THIS SPECIFICATION TO BE PERMANENTLY IDENTIFIED PER THE FOLLOWING IDENTIFIER:

TYCO ELECTRONICS P/N DATE CODE (e.g. 0212)
 XXXXXXXX-X YEAR WEEK

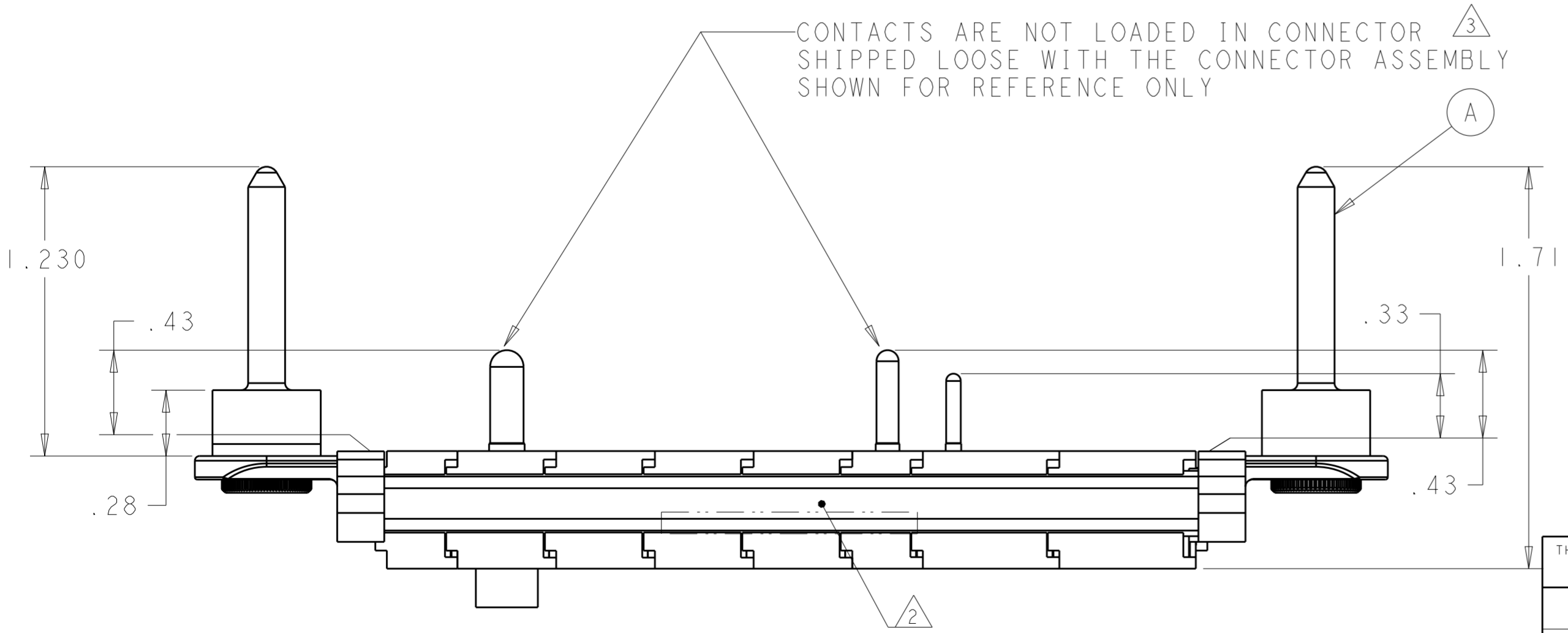
3. MODULES NOTED ARE FOR CRIMP REMOVABLE STYLE CONTACTS. ITEMS E, F AND G WILL BE PACKAGED AND SHIPPED LOOSE WITH THE CONNECTOR ASSEMBLY.

4. MOUNTING FLANGE BUSHING ACCEPTS 6/32 SCREW (.156 DIA. CLEARANCE HOLE, FLOAT MOUNT) OR 8/32 SCREW (.173 DIA. CLEARANCE HOLE, FIXED MOUNT), USER SUPPLIED.

5. CONNECTOR MATES WITH P/N 2085271-1 AND WITH ELCON EDS-10378.

6. CONNECTOR IS A REPLACEMENT FOR ELCON CONNECTOR 799-283 (EDP20378)

7. RAIL LENGTH OF (3.562 ± .005)



8	2212099-1	PIN CONTACTS, CRIMP, SIZE No. 8	G
28	2212101-1	PIN CONTACTS, CRIMP, SIZE No. 16	F
6	2212100-1	PIN CONTACTS, CRIMP, SIZE No. 12	E
4	1648462-1	MODULE "B"	D
2	1648465-1	MODULE "E"	C
2	1648461-1	MODULE "A"	B
2	6648251-1	END CAP, FLOAT MOUNT	A
-1	PART NO.	DESCRIPTION	ITEM NO.

THIS DRAWING IS A CONTROLLED DOCUMENT. DIMENSIONING AND TOLERANCING PER ASME Y14.5M-2009

DWN: C. VALENTINE 31OCT2012
 CHK: D. ORRIS 31OCT2012
 APVD: D. ORRIS 31OCT2012

TE Connectivity

NAME: PIN CONNECTOR ASSEMBLY DOMINO W/PANEL CUT-OUT

SIZE: A2 CAGE CODE: 00779 DRAWING NO: C-2212102 RESTRICTED TO: -

MATERIAL: - DIMENSIONS: INCHES TOLERANCES UNLESS OTHERWISE SPECIFIED: 0 PLC ±, 1 PLC ±, 2 PLC ±.025, 3 PLC ±.010, 4 PLC ±, ANGLES ±, FINISH ±

APPLICATION SPEC: - WEIGHT: - CUSTOMER DRAWING SCALE: 2:1 SHEET 1 OF 2 REV A

ELCON DOMINO

4

3

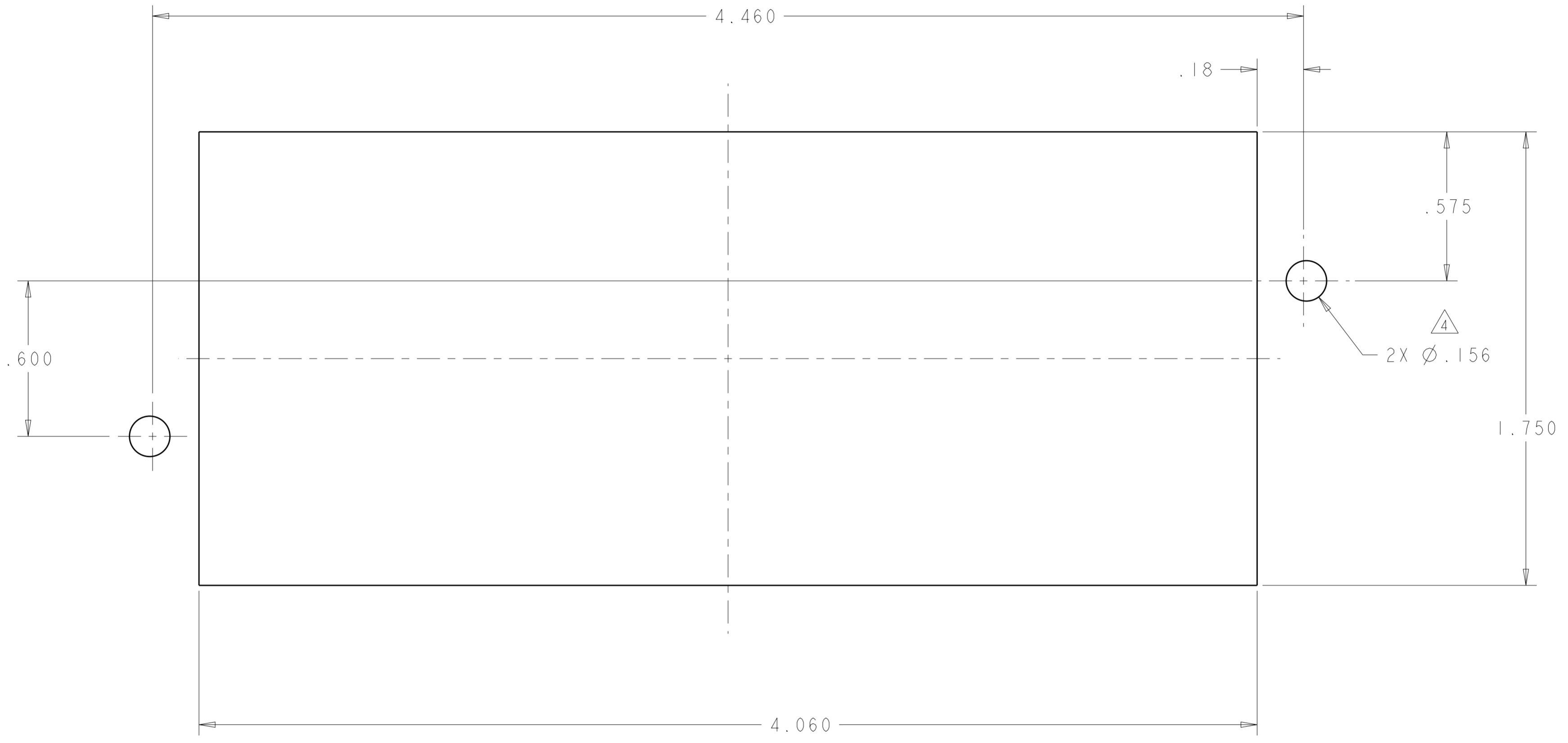
2

1


THIS DRAWING IS UNPUBLISHED. RELEASED FOR PUBLICATION 20
 © COPYRIGHT 20 BY - ALL RIGHTS RESERVED.

LOC DIST
 GP 00

REVISIONS				DATE	DWN	APVD
P	LTR	DESCRIPTION				
-		SEE SHEET 1	-	-	-	



PIN PANEL MOUNT CUTOUT
 COMPONENT SIDE

THIS DRAWING IS A CONTROLLED DOCUMENT.		DWN C. VALENTINE 31OCT2012	 TE Connectivity	
DIMENSIONS: INCHES		CHK D. ORRIS 31OCT2012		
TOLERANCES UNLESS OTHERWISE SPECIFIED:		APVD D. ORRIS 31OCT2012	NAME PIN CONNECTOR ASSEMBLY DOMINO W/PANEL CUT-OUT	
0 PLC ±- 1 PLC ±- 2 PLC ±.25 3 PLC ±.010 4 PLC ±- ANGLES ±- FINISH		PRODUCT SPEC -	RESTRICTED TO -	
MATERIAL -		APPLICATION SPEC -	SIZE A200779	DRAWING NO C-2212102
		WEIGHT -	SCALE 2:1 SHEET 2 OF 2 REV A	
		CUSTOMER DRAWING		