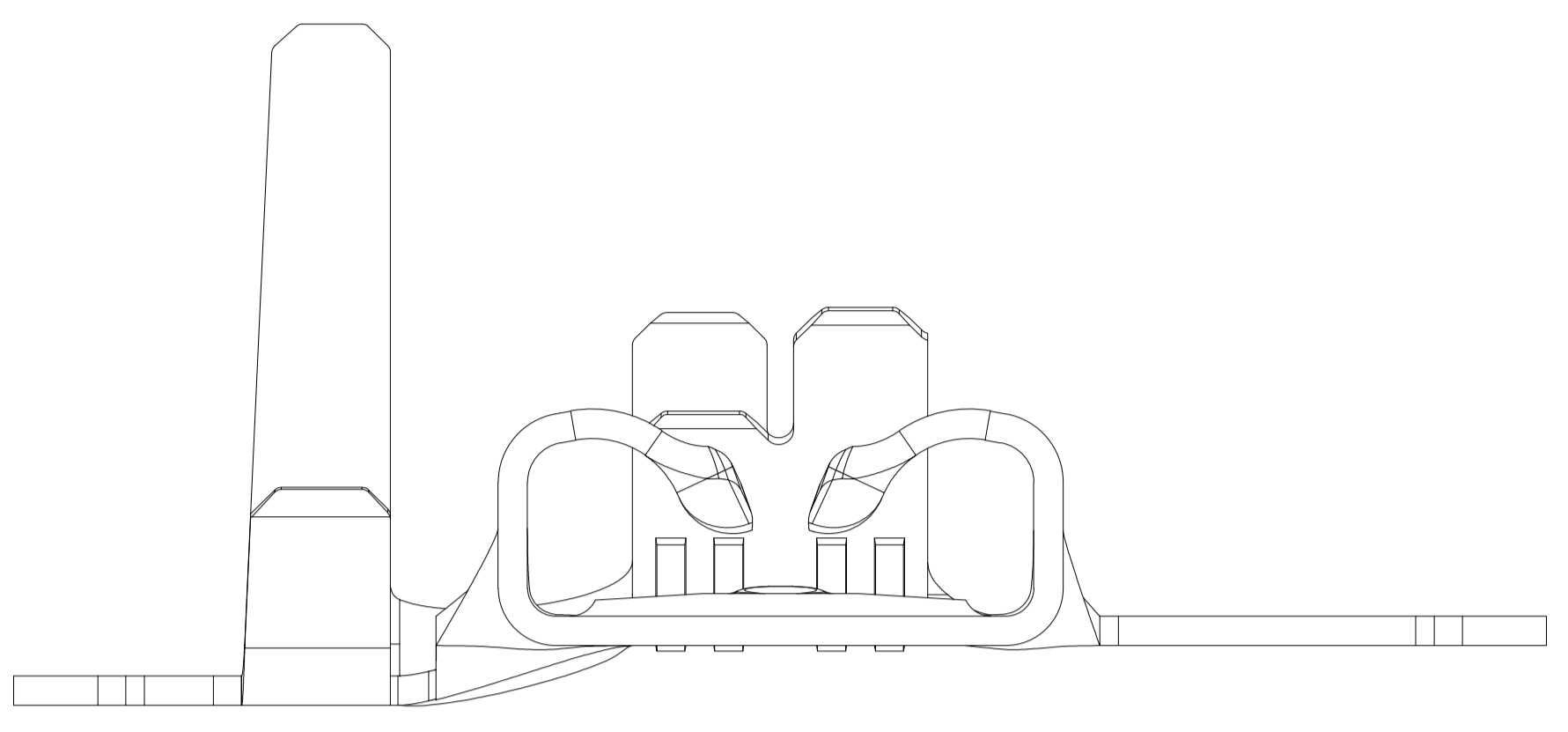
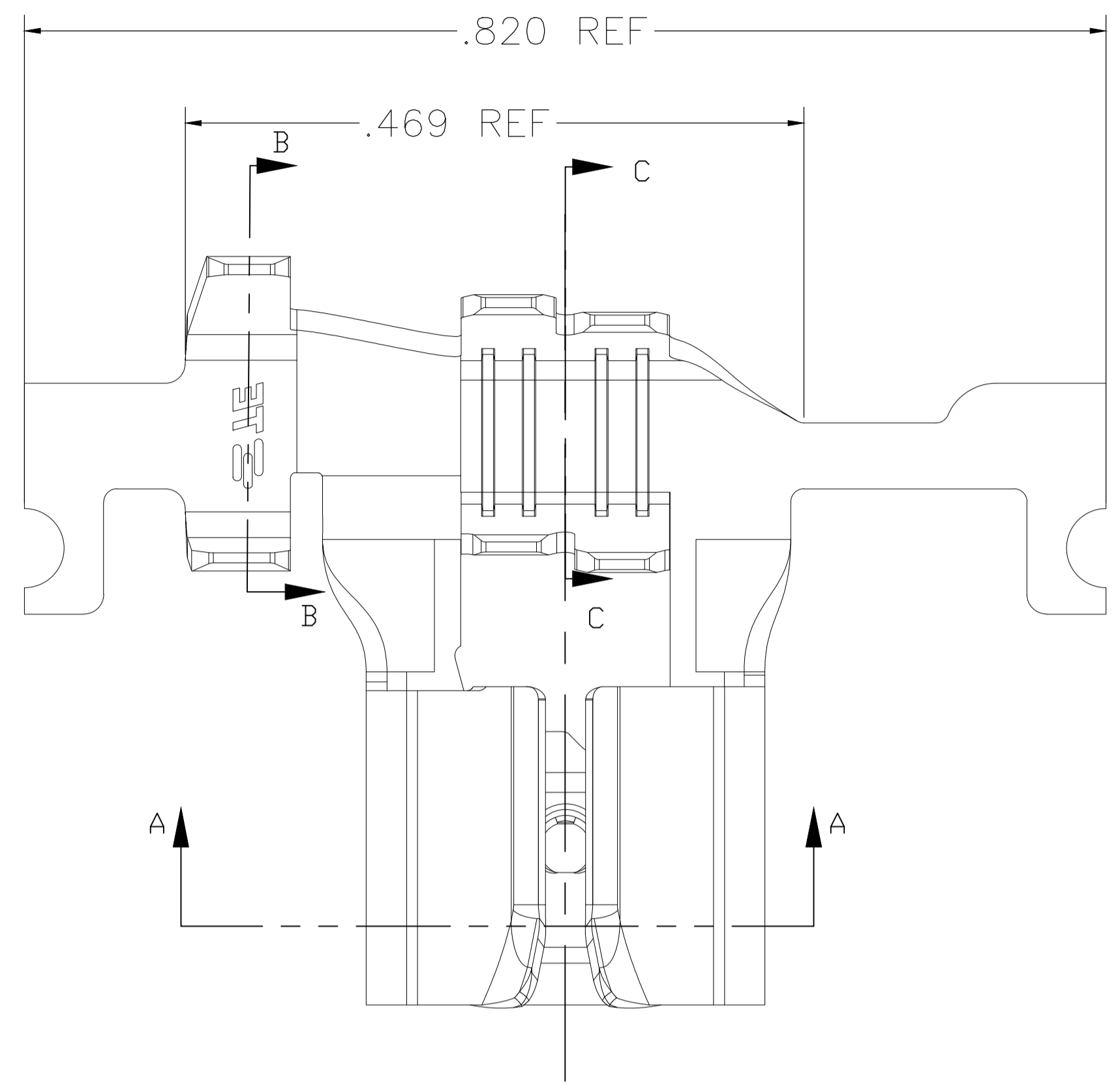
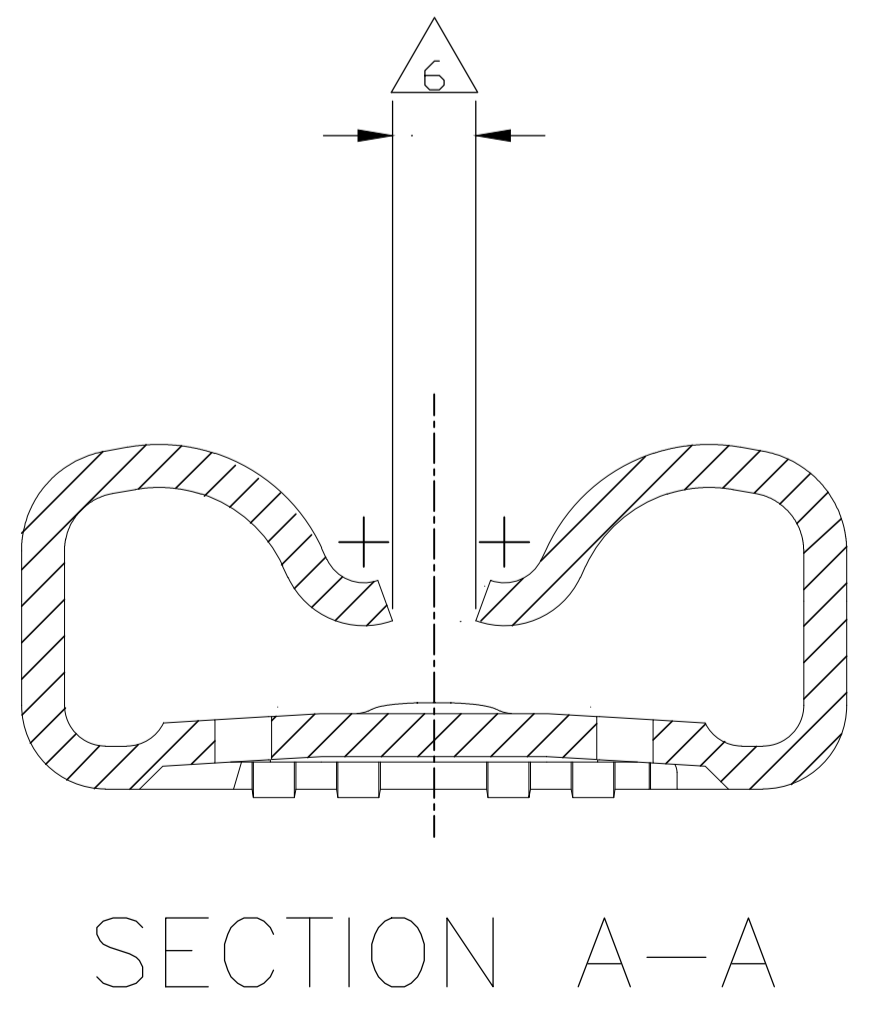
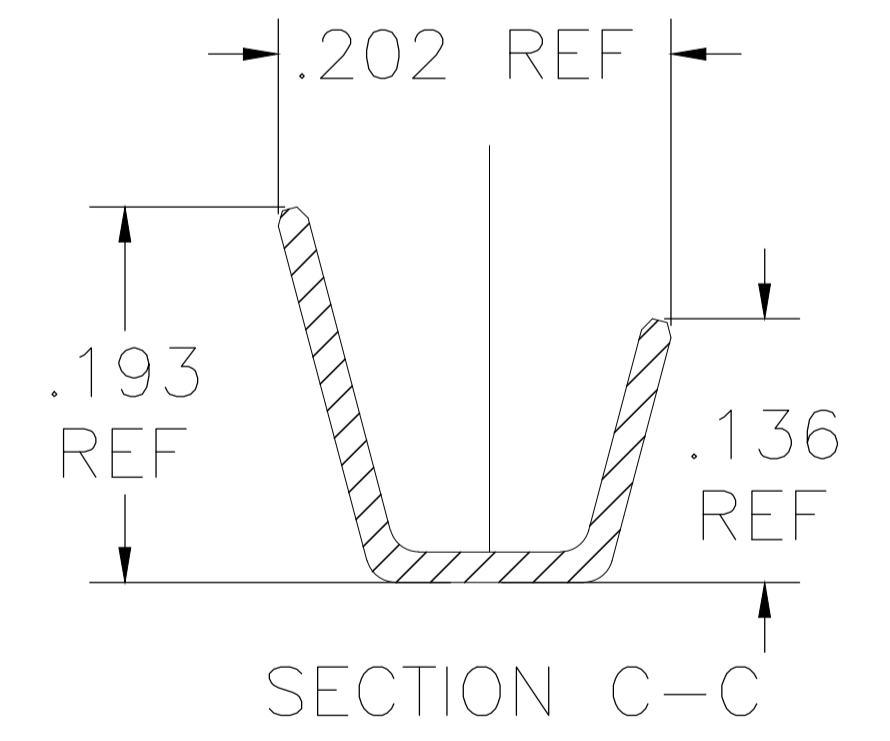
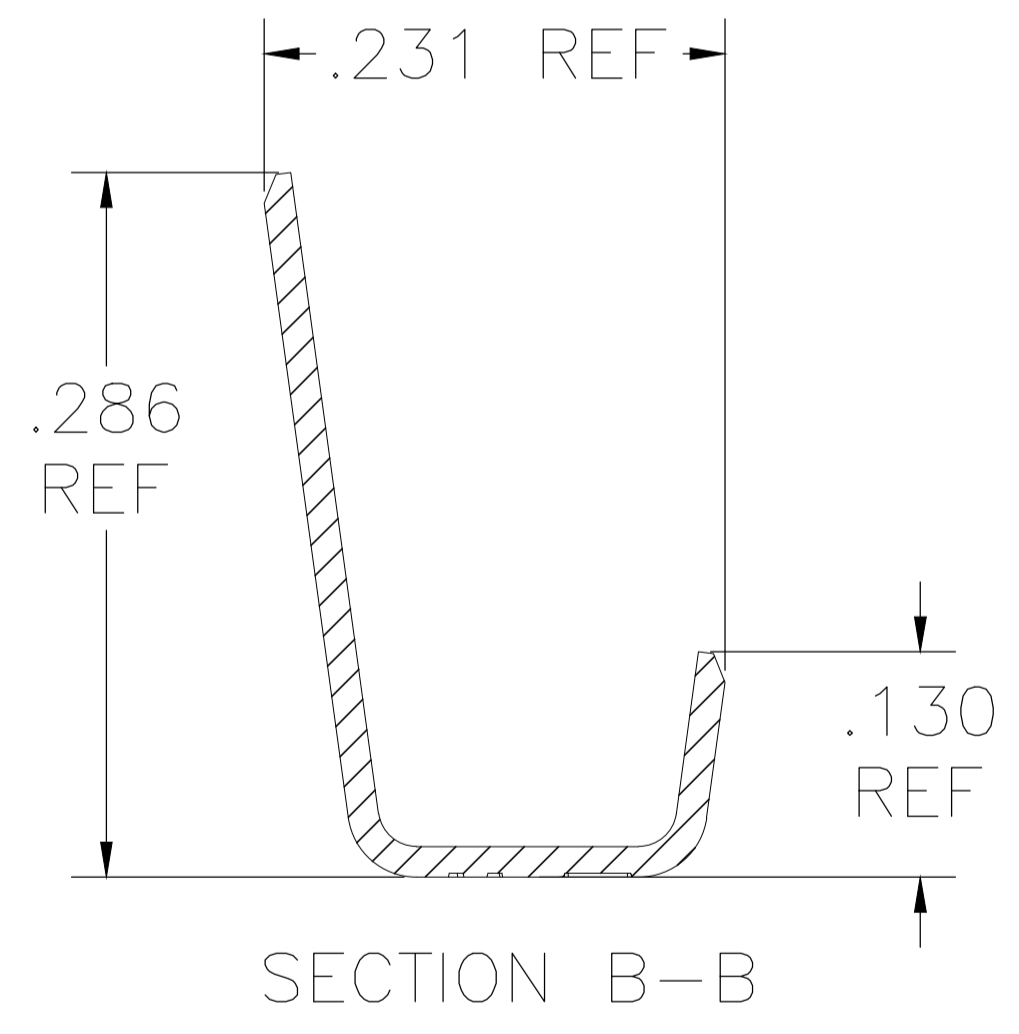
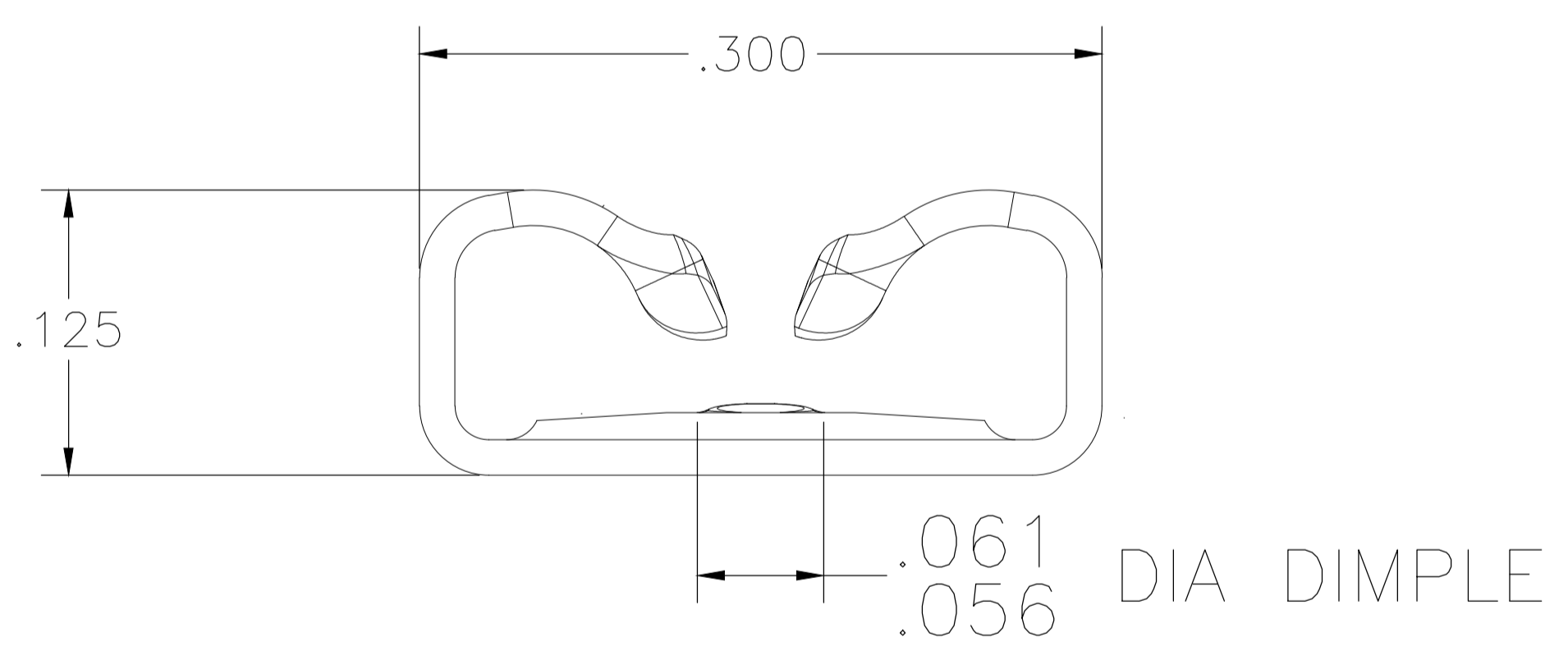


REVISIONS				
P	LTR	DESCRIPTION	DATE	BY
A1		REVISED PER ECR-18-013271	06SEP2018	BDA/DH



- 1 CONTINUOUS STRIP ON REELS.
- 2 WIRE SIZE IS 22-12 AWG
- 3 INSULATION RANGE IS [.074 - .157]
- 4 MATING TAB THK IS .032 ± .001
- 5 NOTE NOT USED
- 6 CONTACT ROLLS TO NOT TOUCH EACH OTHER.



OBSOLETE/SUPERSEDED BY 2238171-3		TIN PLATED	BRASS	2238171-3
		TIN-PLATED FINISH	BRASS MATERIAL	2238171-1 PART NUMBER
THIS DRAWING IS A CONTROLLED DOCUMENT.		DRN DIVYA SHUKLA 29DEC2016	TE Connectivity FASTON .250 STD. REC. 2D FLG AWG 22-12 TPBR	
DIMENSIONS: INCHES		CHK DAVID HUMPHREY 29DEC2016		
TOLERANCES UNLESS OTHERWISE SPECIFIED:		APVD TIM DING 29DEC2016	NAME	
0 PLC ± -			PRODUCT SPEC	
1 PLC ± -			APPLICATION SPEC	
2 PLC ± -			SIZE CAGE CODE DRAWING NO	
3 PLC ± .01			RESTRICTED TO	
4 PLC ± -			WEIGHT	
ANGLES ± 1°			A1 00779 C=2238171	
MATERIAL FINISH		CUSTOMER DRAWING		SCALE 10:1 SHEET 1 OF 1 REV A1