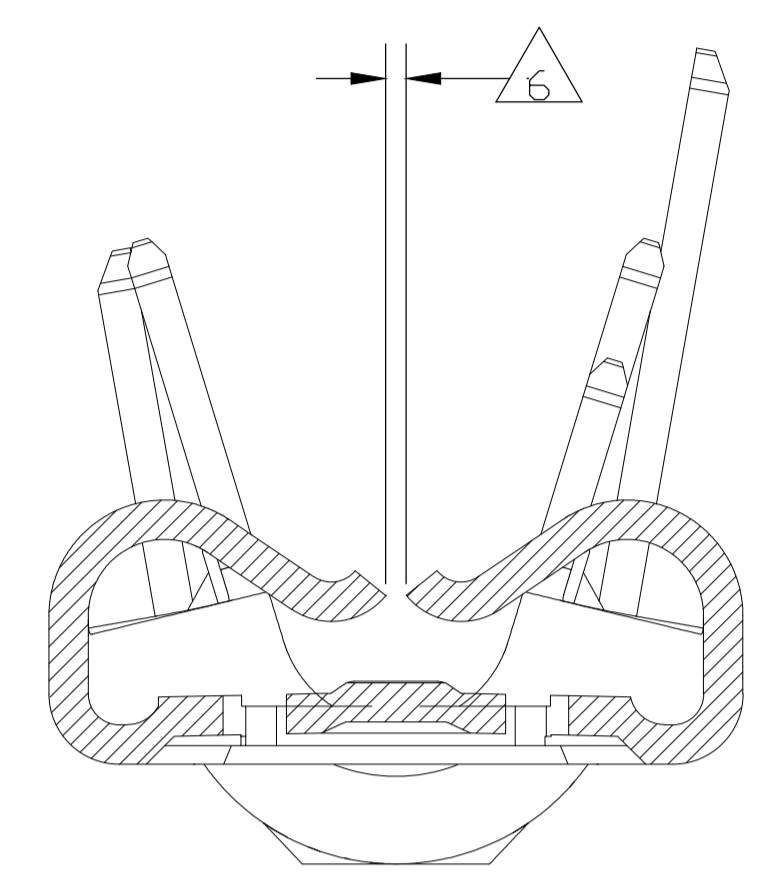
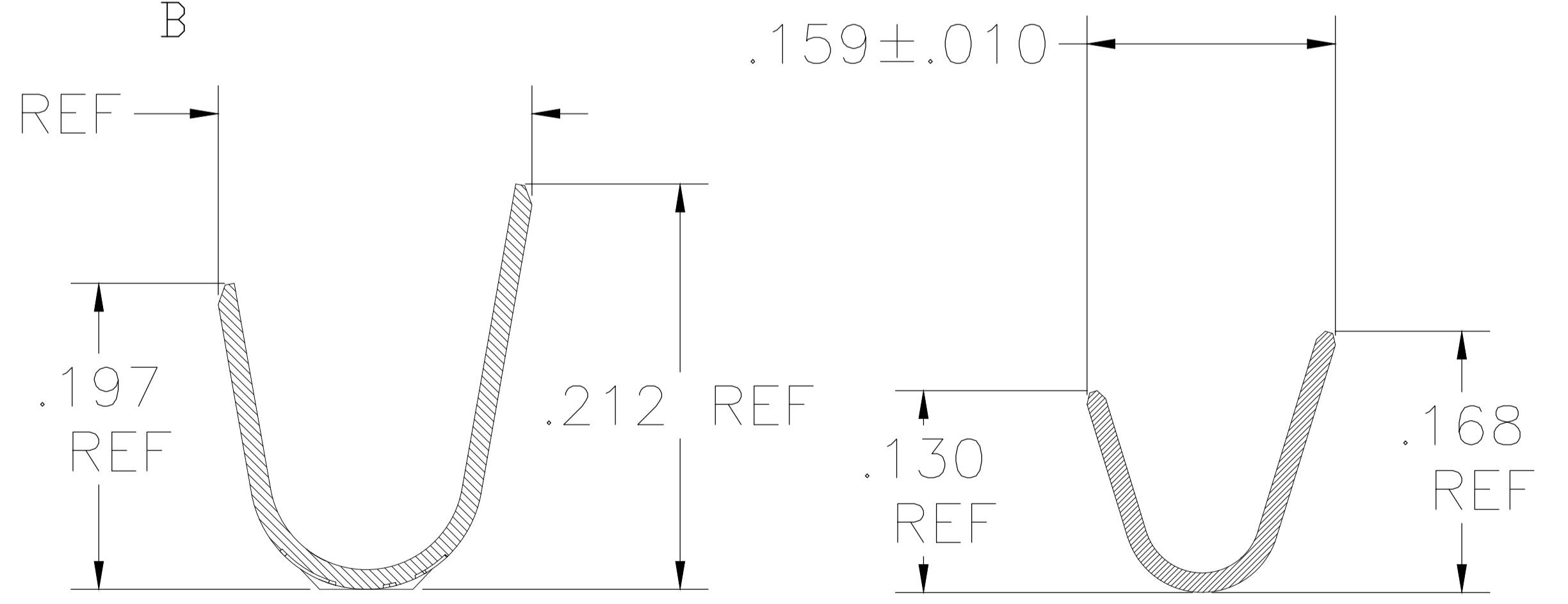
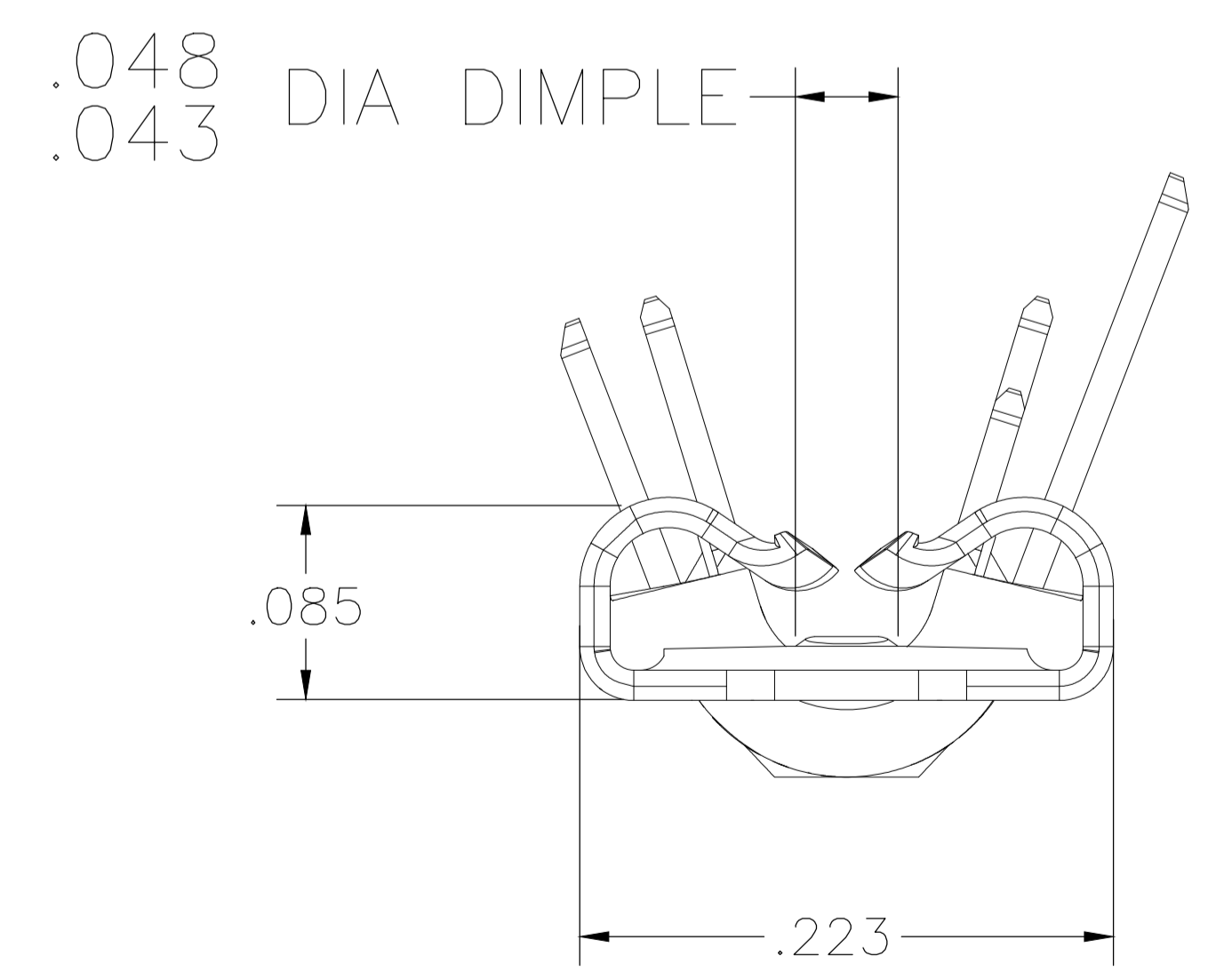
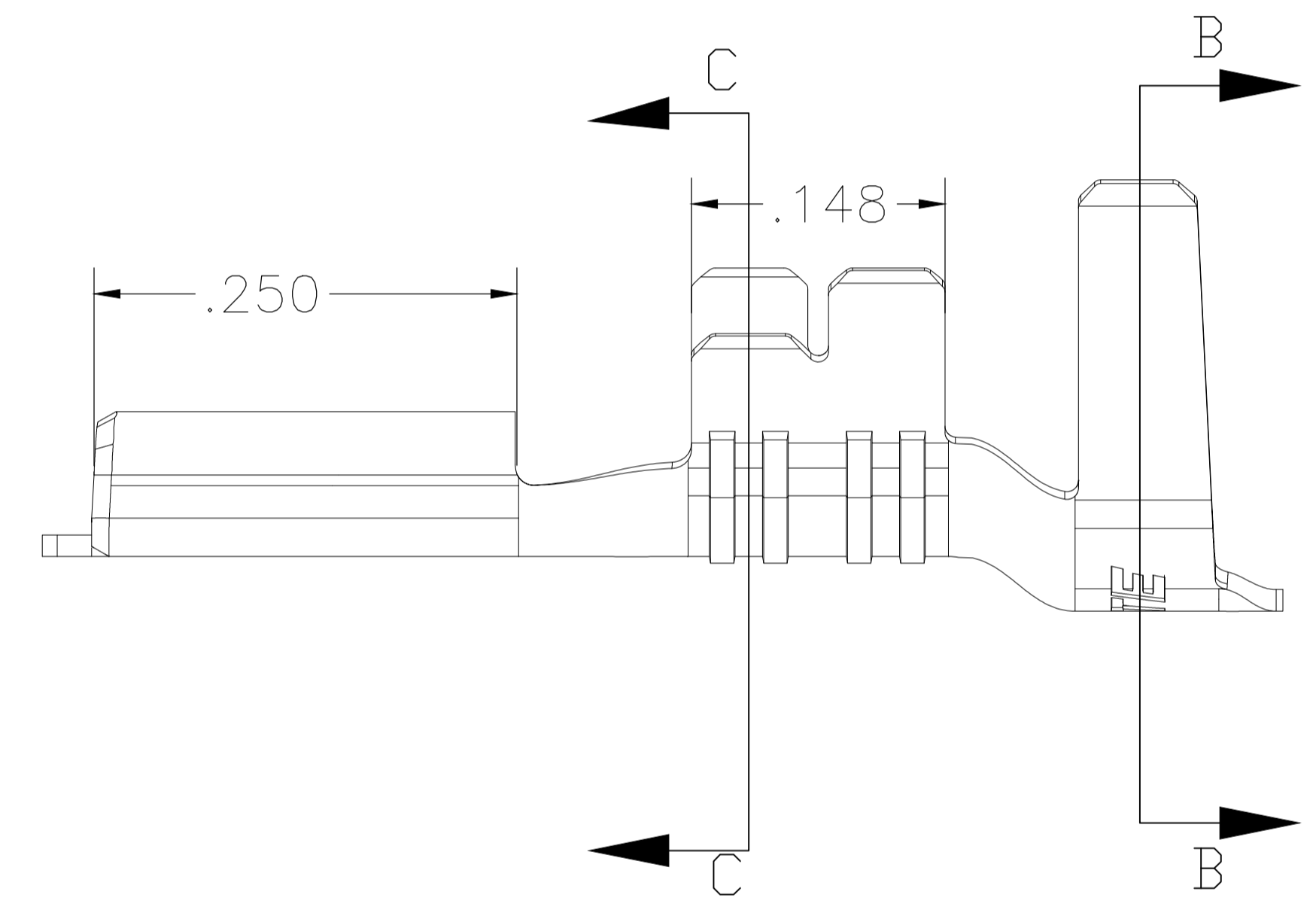
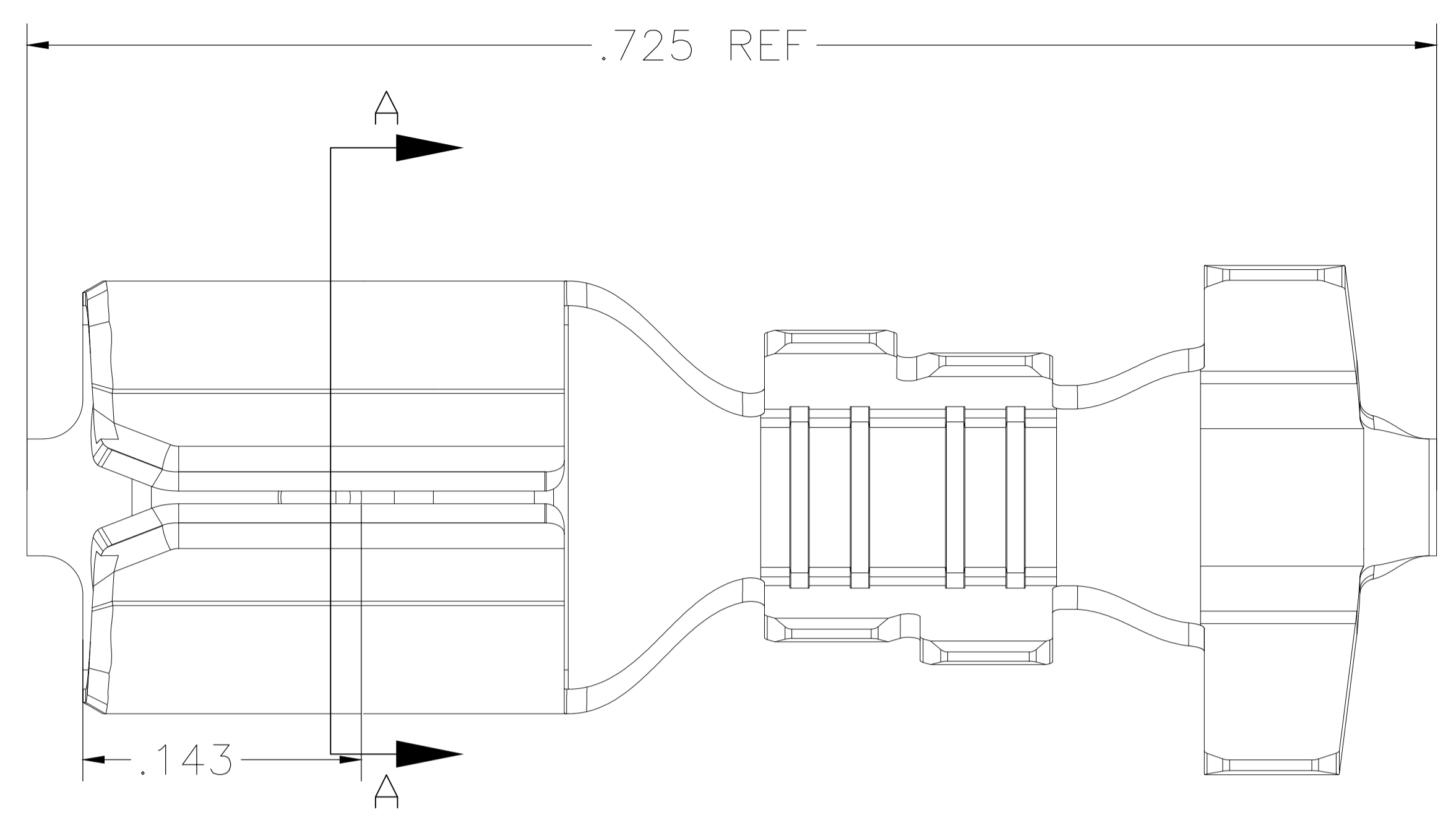


| REVISIONS | | | | | |
|-----------|-----|---------------------------|-----------|-----|------|
| P | LTR | DESCRIPTION | DATE | DMN | APVD |
| A1 | | REVISED PER ECR-18-013271 | 05SEP2018 | BDA | DH |



SECTION A-A



SECTION B-B

SECTION C-C

- 1 CONTINUOUS STRIP ON REELS.
- 2 WIRE SIZE IS 24-14 AWG
- 3 INSULATION RANGE IS [.067 - .149]
- 4 MATING TAB THK IS .032 ± .001
- 5 NOTE NOTE USED
- 6 CONTACT ROLLS TO NOT TOUCH EACH OTHER

| | | | | |
|--|--------|------------------|------------------------------|--------------|
| OBSOLETED/SUPERSEDED BY 2238174-3 | | TIN PLATED | BRASS | 2238174-3 |
| | | TIN PLATED | BRASS | 2238174-1 |
| | | FINISH | MATERIAL | PART NUMBER |
| THIS DRAWING IS A CONTROLLED DOCUMENT. | | DMN | 29DEC2016 | |
| DIMENSIONS: INCHES | | CHK | 29DEC2016 | |
| TOLERANCES UNLESS OTHERWISE SPECIFIED: | | NAME | DAVID HUMPHREY | |
| 0 PLC | ± - | DMN | 29DEC2016 | |
| 1 PLC | ± - | CHK | 29DEC2016 | |
| 2 PLC | ± - | NAME | TIM DING | |
| 3 PLC | ± .01 | PRODUCT SPEC | FASTON .187 STD. REC. 2D STR | |
| 4 PLC | ± - | APPLICATION SPEC | AWG 24-14 TPBR | |
| ANGLES | ± 1° | SIZE | CAGE CODE | DRAWING NO |
| MATERIAL | FINISH | WEIGHT | A1 | 00779 |
| CUSTOMER DRAWING | | SCALE | 10:1 | SHEET 1 OF 1 |
| | | REV | A1 | |