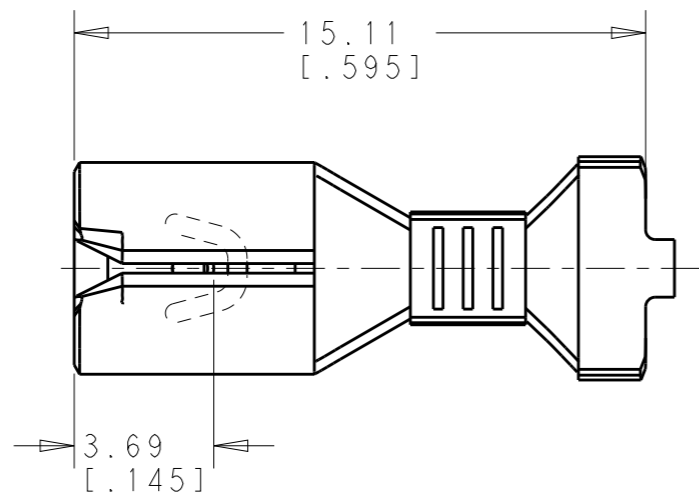
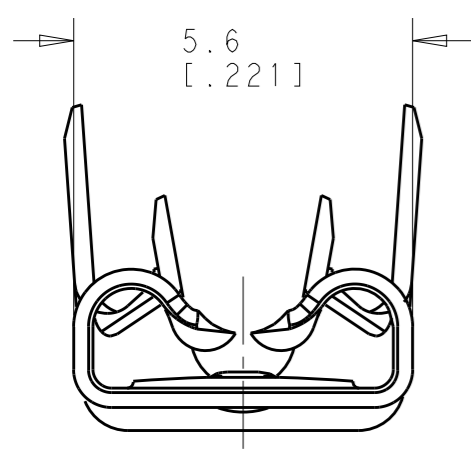


THIS DRAWING IS UNPUBLISHED. RELEASED FOR PUBLICATION 20  
 © COPYRIGHT 20 BY - ALL RIGHTS RESERVED.

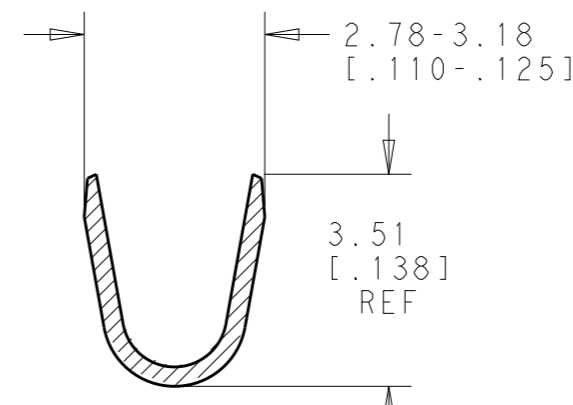
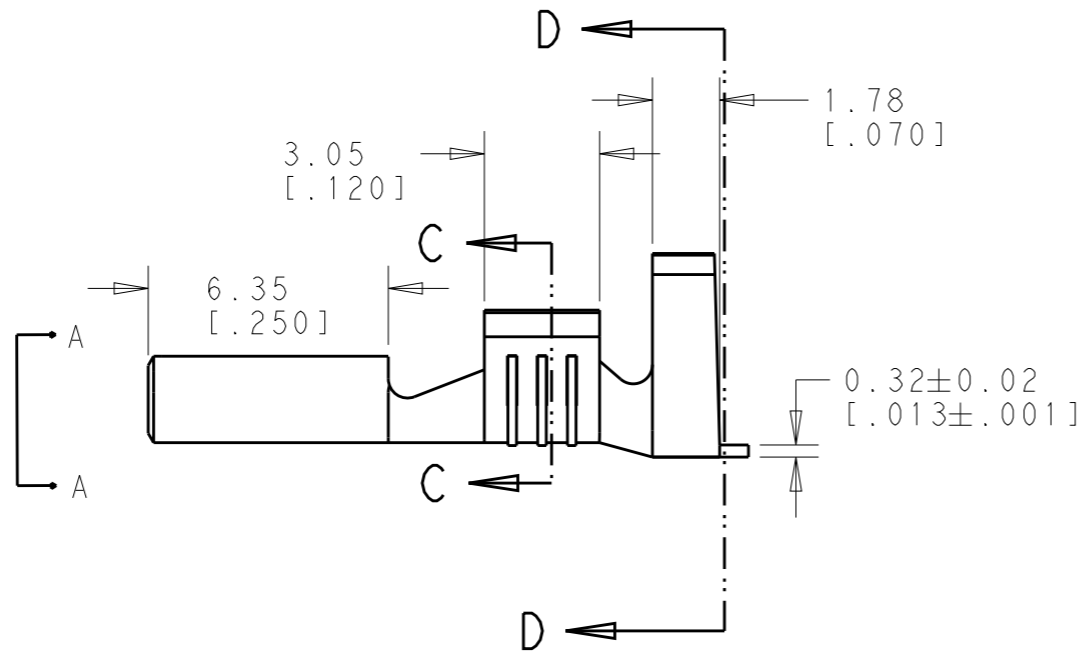
REVISIONS					
P	LTR	DESCRIPTION	DATE	DWN	APVD
	A	RELEASED PER ECO-18-002592	20FEB2018	RS	DH
	B	REVISED PER ECR-19-012503	06SEP2019	PC	DH



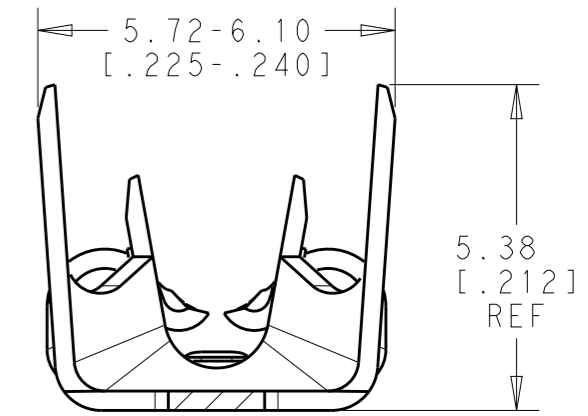
- 1 CONTINUOUS STRIP ON REELS.
- 2 WIRE SIZE #18-#16 OR TWO #18'S AWG
- 3 INSULATION RANGE 2.67-5.33 [.105-.210] DIA OR TWO AT 2.67 MAX [.105] DIA
- 4 MATING TAB THK 0.81±0.025 [.032±.001]
- 5 AWG 18-16 & (2) AWG 18 UL APPROVAL
- 6 PAPER INTERLEAVING ON FINAL PACKAGING. QTY/REEL = 15K/REEL.



VIEW A-A  
SCALE 8:1


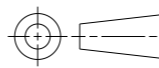


SECTION C-C  
SCALE 8:1



SECTION D-D  
SCALE 8:1

TIN	BRASS	2238199-3
FINISH	MATERIAL	PART NO.

THIS DRAWING IS A CONTROLLED DOCUMENT.		DWN 05JAN2018 BASVESH WARAD	 TE Connectivity				
DIMENSIONS: mm [INCHES]		CHK 05JAN2018 HUMPHREY, DAVID			NAME FASTON 187 STD REC STR 18-16 OR 2X18 TPBR		
		APVD 05JAN2018 HUMPHREY, DAVID	PRODUCT SPEC				
TOLERANCES UNLESS OTHERWISE SPECIFIED: 0 PLC ±- 1 PLC ±- 2 PLC ±0.25 [.010] 3 PLC ±- 4 PLC ±- ANGLES ±5°		APPLICATION SPEC	SIZE	CAGE CODE	DRAWING NO	RESTRICTED TO	
MATERIAL SEE TABLE		FINISH SEE TABLE	WEIGHT	A3	00779	C-2238199	-
CUSTOMER DRAWING			SCALE	5:1	SHEET	1 OF 1	REV B