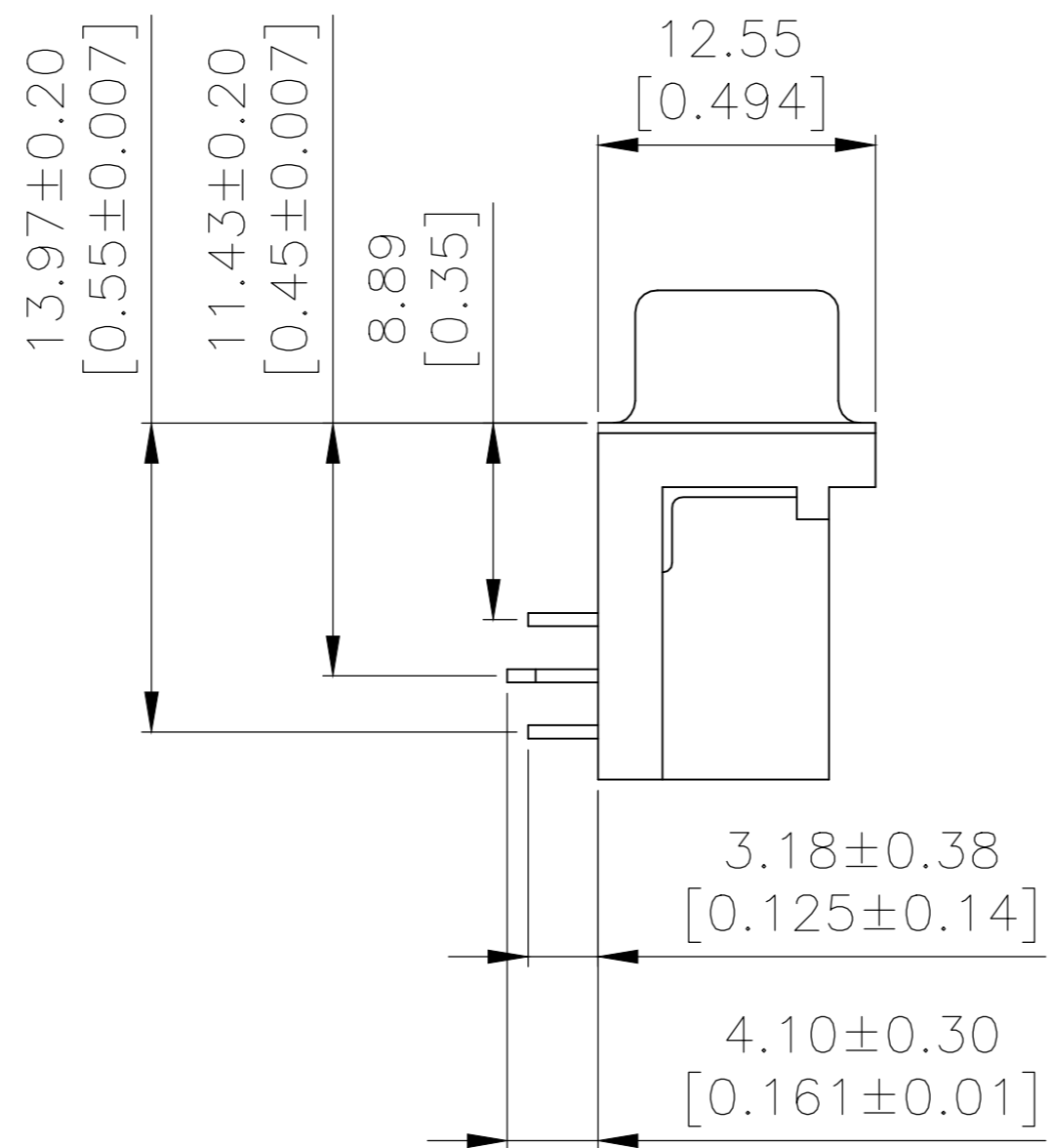
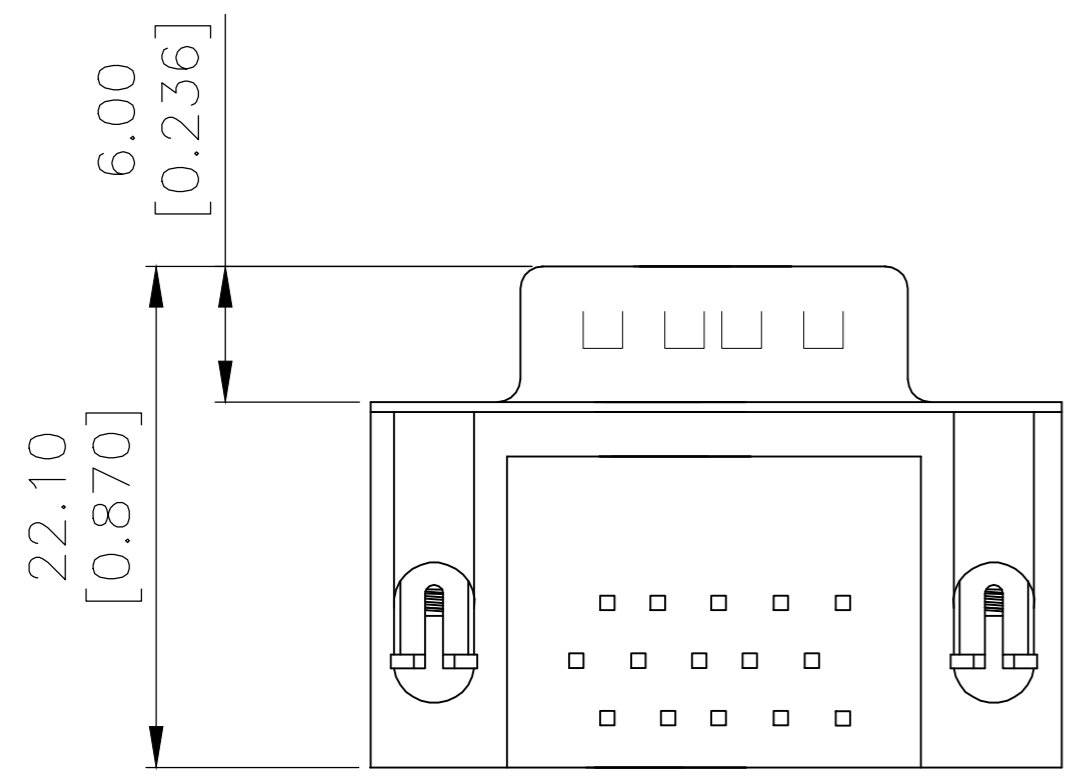
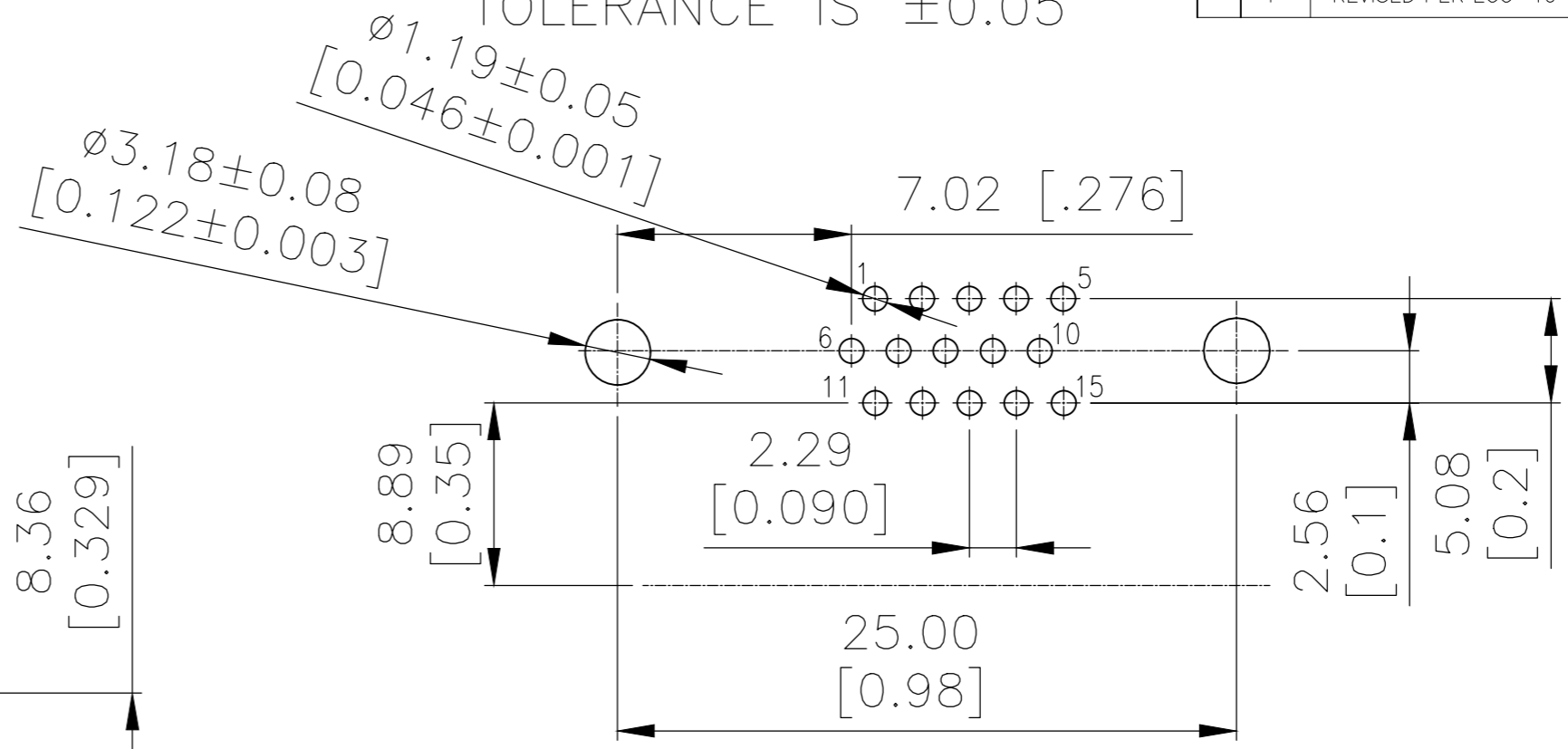
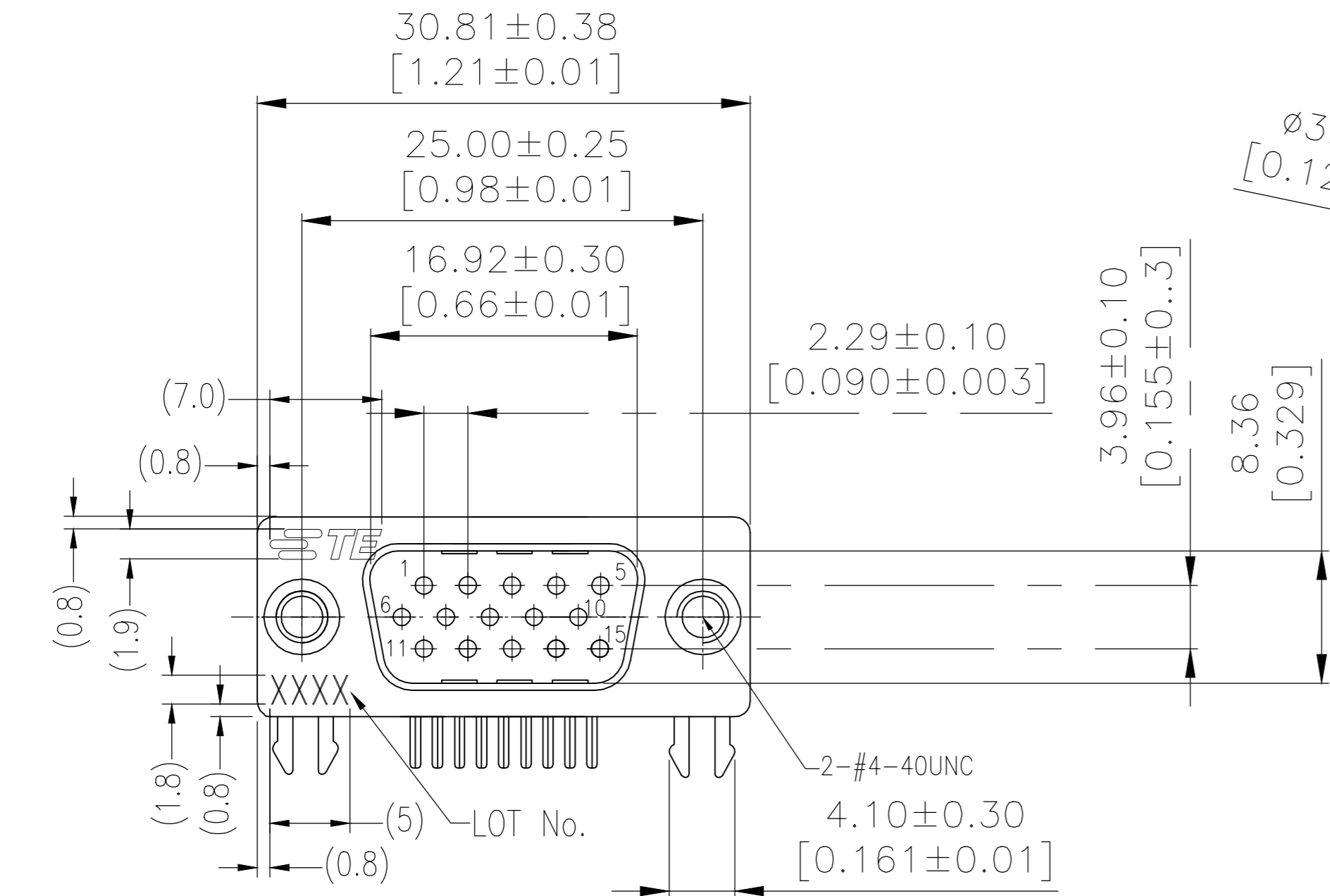


THIS DRAWING IS UNPUBLISHED. RELEASED FOR PUBLICATION  
 © COPYRIGHT - By - ALL RIGHTS RESERVED.

RECOMMENDED PCB LAYOUT  
 TOLERANCE IS ±0.05

REVISIONS				
P	LTR	DESCRIPTION	DATE	APVD
F		REVISED PER ECO-19-007626	12SEP2019	AP DG



NOTES:  
 Housing:PBT+30%GF(UL94V-0) BLACK  
 Contact:Brass  
 " GOLD PLATING ON CONTACT AREA  
 100u" MATTE TIN PLATING ON SOLDER TAIL  
 50u" NICKEL UNDERPLATED OVERALL  
 HOLDDOWN:Brass,100u" TIN OVER 50u" NICKEL  
 Shell: Cold Roller Steel, Ni Plated  
 Revit: Brass, Nickel Plating  
 LOT NUMBER "XXXX"  
 ↳ Stands For Calendar Year  
 ↳ Stands For Week Number

THREADED	30μ" Au	2311774-1
-	Contact Area	P/N
	Plating	

THIS DRAWING IS A CONTROLLED DOCUMENT.		DWN AJITH PAI 09MAR2017	<b>STE</b> TE Connectivity	
DIMENSIONS: mm		CHK DANIEL GORENC 09MAR2017		
TOLERANCES UNLESS OTHERWISE SPECIFIED:		APVD DANIEL GORENC 09MAR2017	NAME AMPLIMITE PLUG, HD22, RIGHT ANGLE, 15P	
0 PLC ± -		PRODUCT SPEC 108-130023	SIZE A2	
1 PLC ± -		APPLICATION SPEC	CAGE CODE 00779	
2 PLC ± 0.25			DRAWING NO C=2311774	
3 PLC ± -			RESTRICTED TO	
4 PLC ± -			-	
ANGLES ± -			-	
FINISH		WEIGHT	SCALE 1:1	
-			SHEET 1 OF 1	
-		CUSTOMER DRAWING	REV F	