

THIS DRAWING IS UNPUBLISHED.

RELEASED FOR PUBLICATION JAN ,2016.

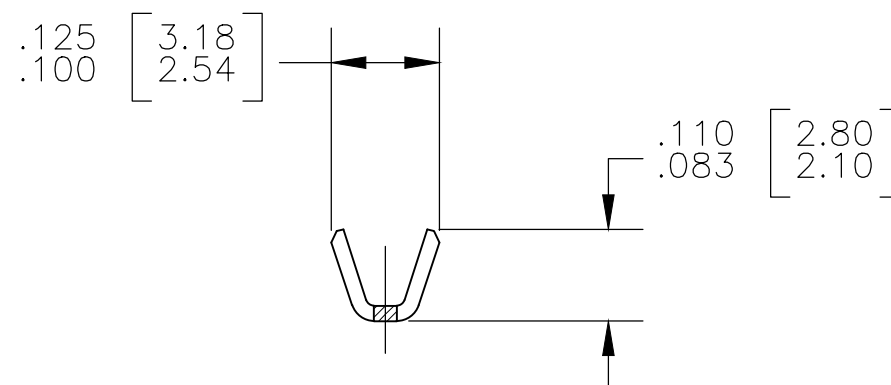
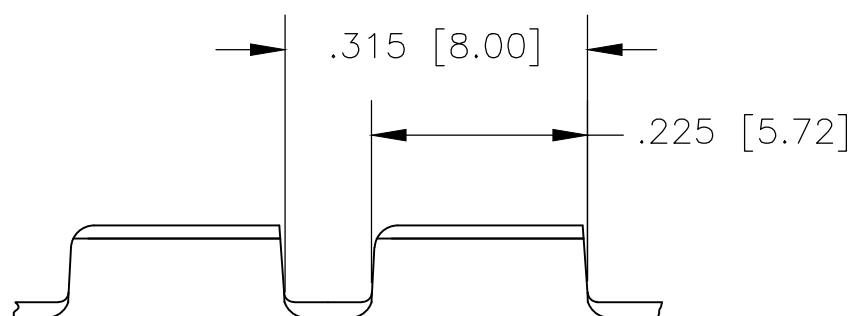
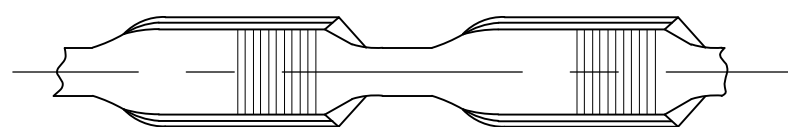
© COPYRIGHT 2015 By TE CONNECTIVITY

ALL RIGHTS RESERVED.


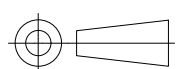
REVISIONS

P	LTR	DESCRIPTION	DATE	DWN	APVD
	B	APPLICABLE WIRE TYPE UPDATED	31MAR2020	MB	TD

- 1 PRODUCT SUPPLIED IN STRIP FORM ON REELS
BREAKS MAY BE PRESENT
- 2 DIMENSIONS IN BRACKETS ARE IN MM
- 3 CMA RANGE: 400-1500
- 4 CRIMP WIDTH: .080 F(AMPLIVAR TYPE)
CRIMP HEIGHT ($\pm .002$) = (TOTAL CMA +5320)/139,200
GENERAL APPLICATION GUIDELINES MUST BE FOLLOWED AS SPECIFIED IN CATALOG #
FOR APPLICATOR INFORMATION CALL: 1-800-722-1111
FOR PRODUCT INFORMATION CALL: 1-800-522-6752
- 5 USE WITH ALUMINIUM OR COPPER MAGNET WIRE
IN COMBINATION WITH STRANDED COPPER LEAD WIRE.



5	TIN PLATED	.016[0.41] BRASS	2825180-2
No. of Serrations	Finish	Material	Part Number

THIS DRAWING IS A CONTROLLED DOCUMENT.		DWN SENTHIL 28JAN2016	 TE Connectivity		
DIMENSIONS: INCHES		CHK SENTHIL 28JAN2016			NAME
		APVD RAJENDRA 28JAN2016			FINE MAGWIRE SPLICE MINI MAG-MATE SERRATION
TOLERANCES UNLESS OTHERWISE SPECIFIED:		PRODUCT SPEC 108-64051	APPLICATION SPEC 114-64001	RESTRICTED TO	
MATERIAL SEE TABLE		FINISH SEE TABLE	SIZE A3	CAGE CODE 00779	
		WEIGHT -	DRAWING NO C-2825180	SCALE 5:1	
		CUSTOMER DRAWING		SHEET 1 OF 1	
				REV B	