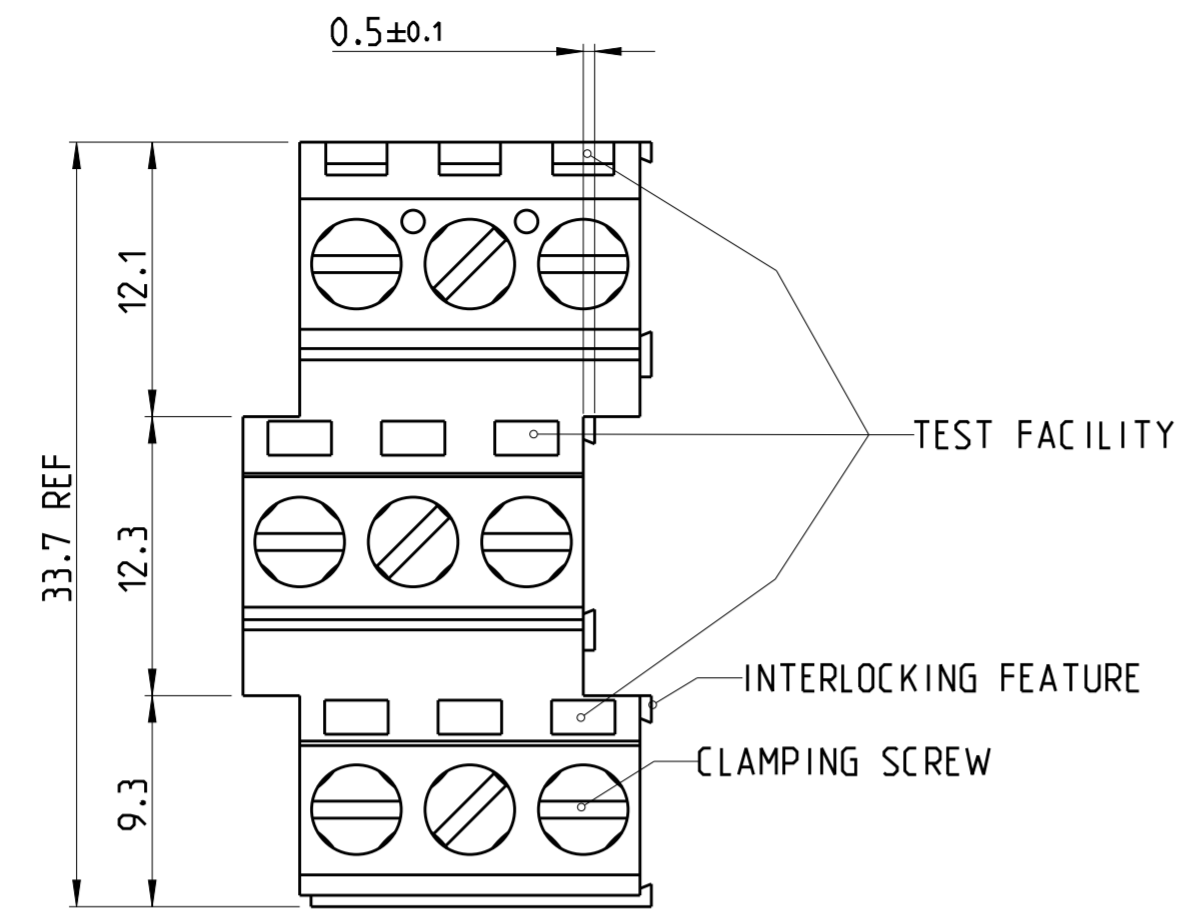
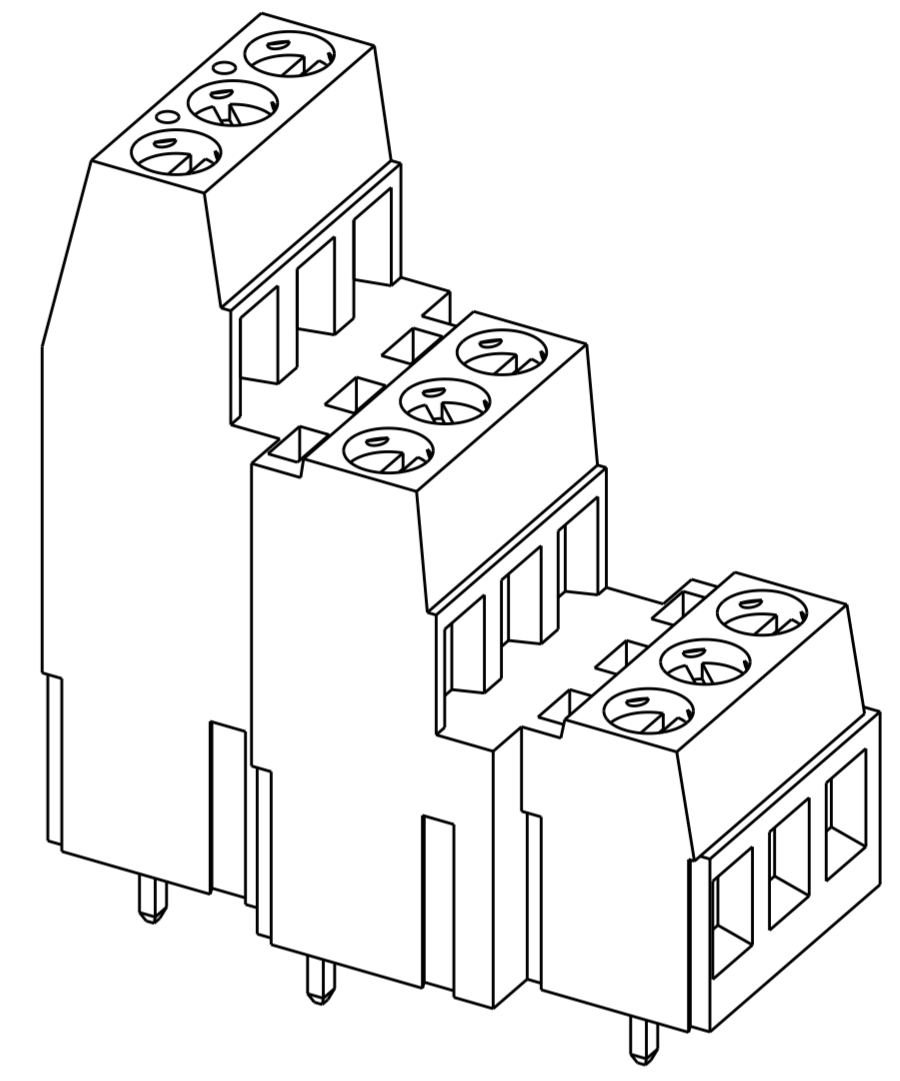


THIS DRAWING IS UNPUBLISHED. RELEASED FOR PUBLICATION 20  
 © COPYRIGHT 20 BY - ALL RIGHTS RESERVED.

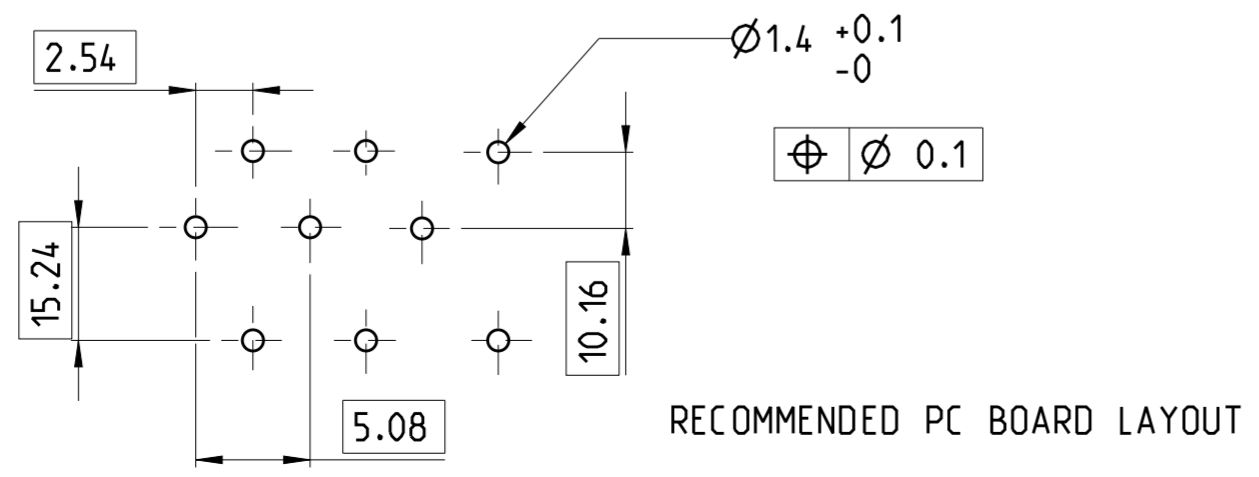
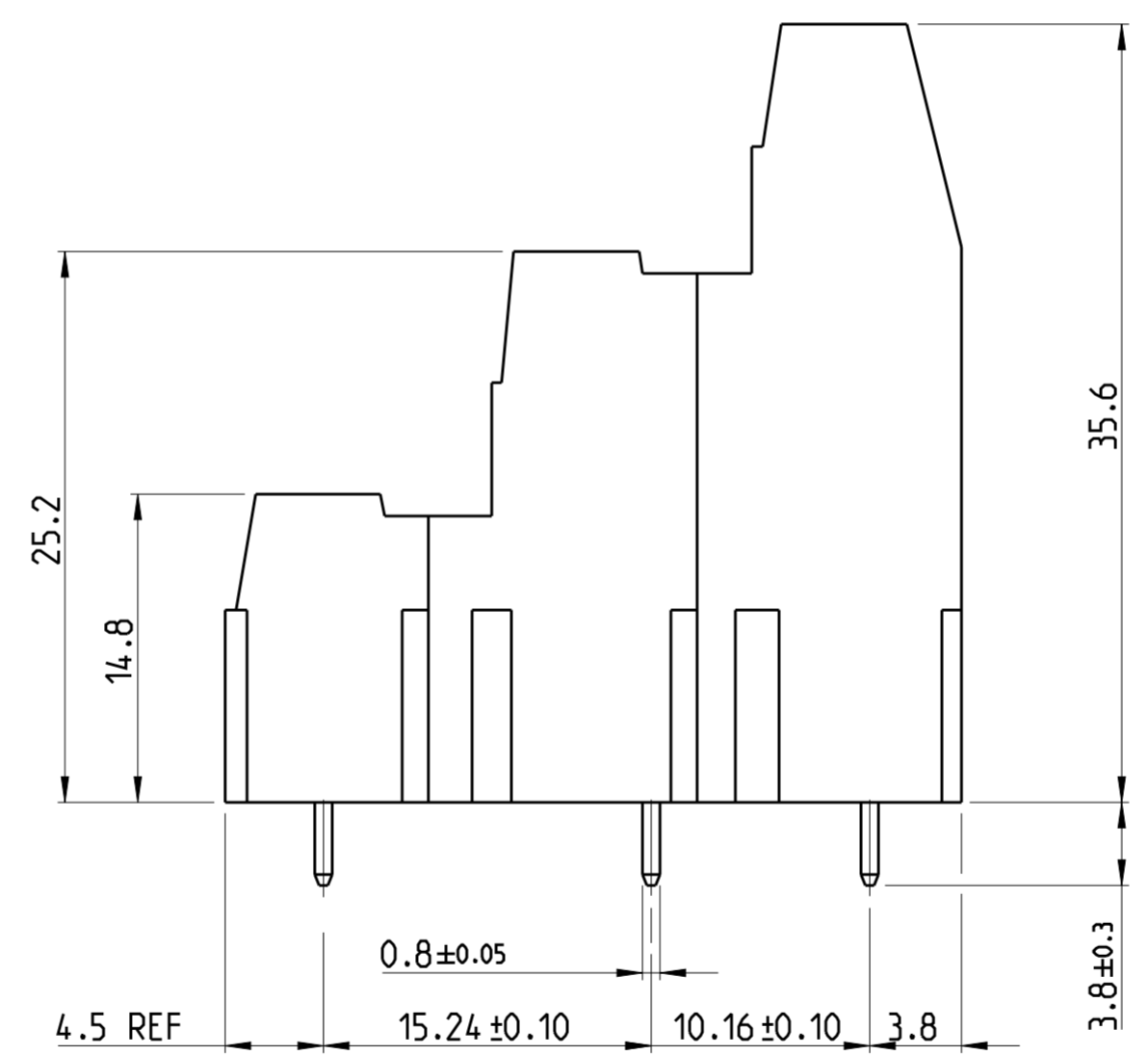
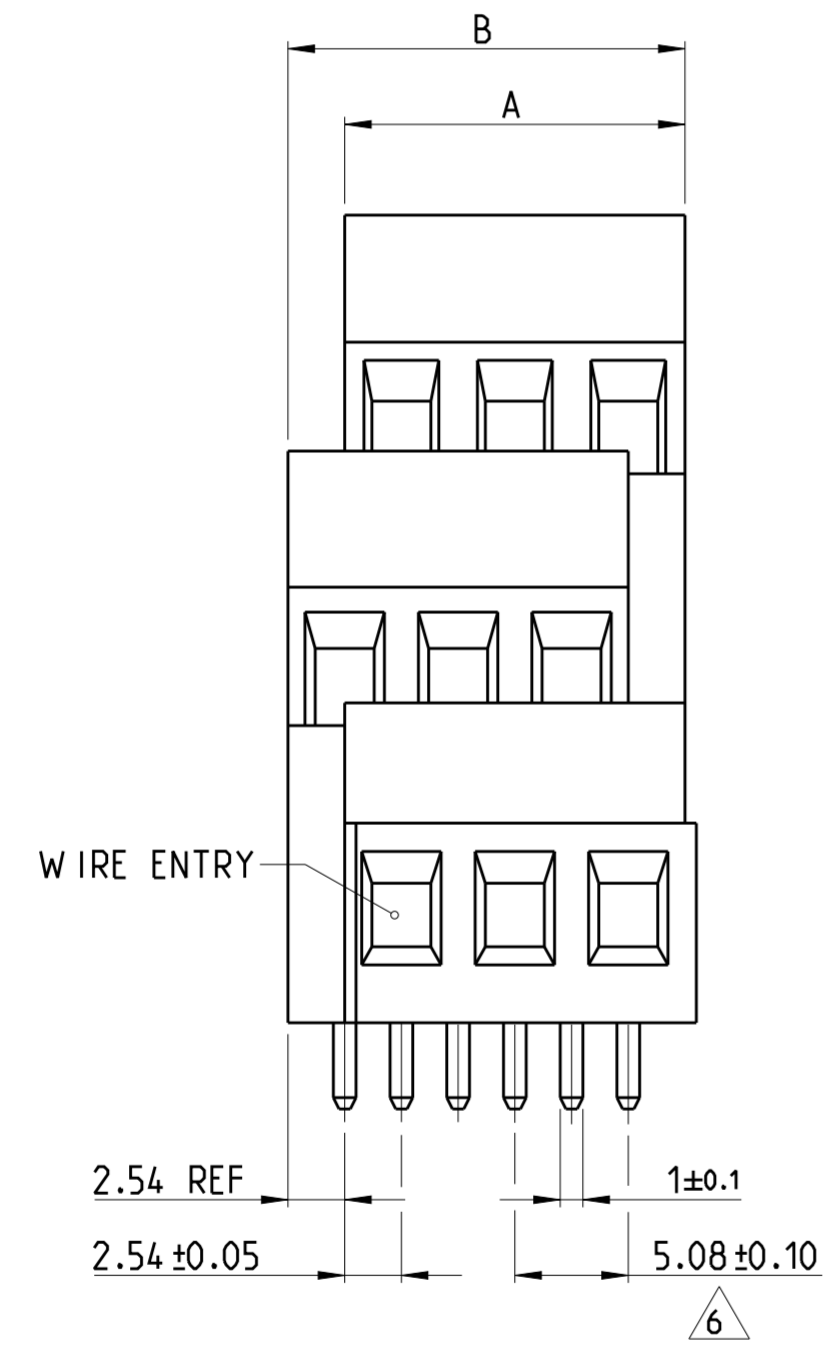
REVISIONS					
P	LTR	DESCRIPTION	DATE	DWN	APVD
	C1	DIM (12.1, 12.3, 9.3) ADDED IN ZONE D4	20OCT2015	FP	GN



- NOTES
- MATERIALS & FINISH**  
 HOUSING : PA 6-6, UL94 V0, COLOR -GREEN  
 SCREW M3 : BRASS, NICKEL PLATED  
 CLAMP : BRASS, NICKEL PLATED  
 CONTACT : BRASS, TIN PLATED
  - MECHANICAL**  
 RECOMMENDED/ HIGHEST TIGHTENING TORQUE : 0.5/0.6 Nm  
 PCB THICKNESS: MAX 2.4 mm  
 WIRE STRIPPING LENGTH: 5.5 - 6.5 mm
  - ELECTRICAL**  
 WIRE RANGE : 30 - 12 AWG  
 MAX. VOLTAGE : 300 V  
 MAX CURRENT : 17.5 A  
 CONTACT RESISTANCE : <15 m Ohm  
 INSULATION RESISTANCE : > 1000 M Ohm (500V DC)
  - OPERATING TEMPERATURE RANGE: -40°C TO +110°C
  - END-TO-END STACKABLE W/INTERLOCK WITHOUT LOSS OF CENTERLINE SPACING.
  - TOLERANCE NOT CUMULATIVE.



282897-3 AS SHOWN



17.78	15.24	3	282897-3
12.70	10.16	2	282897-2
<b>DIM. B</b>	<b>DIM. A</b>	<b>N° OF POS.</b>	<b>PART NUMBER</b>

THIS DRAWING IS A CONTROLLED DOCUMENT.		DWN E. ZANOLINI 17DEC 2001	TE Connectivity	
DIMENSIONS: mm		CHK D. BIEVENOUR 17DEC 2001		
TOLERANCES UNLESS OTHERWISE SPECIFIED:		APVD D. BIEVENOUR 17DEC 2001	NAME	
0 PLC ±2		PRODUCT SPEC	TERMINAL BLOCK, PCB MOUNT	
1 PLC ±2		APPLICATION SPEC	THREE LEVEL	
2 PLC ±15		WEIGHT	SIZE	CAGE CODE
3 PLC ±		CUSTOMER DRAWING	A2	-
4 PLC ±		SCALE	3:1	SHEET 1 OF 1
ANGLES ±°		REV	C1	
FINISH				
MATERIAL SEE NOTES				