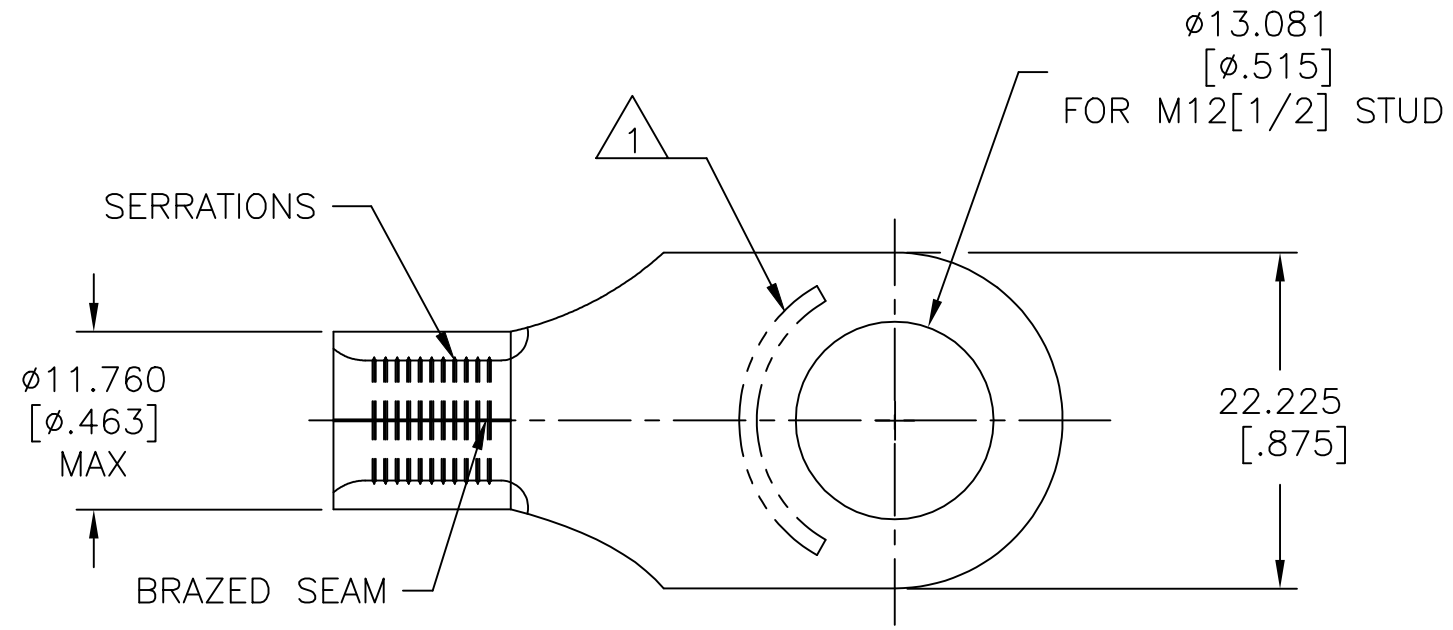
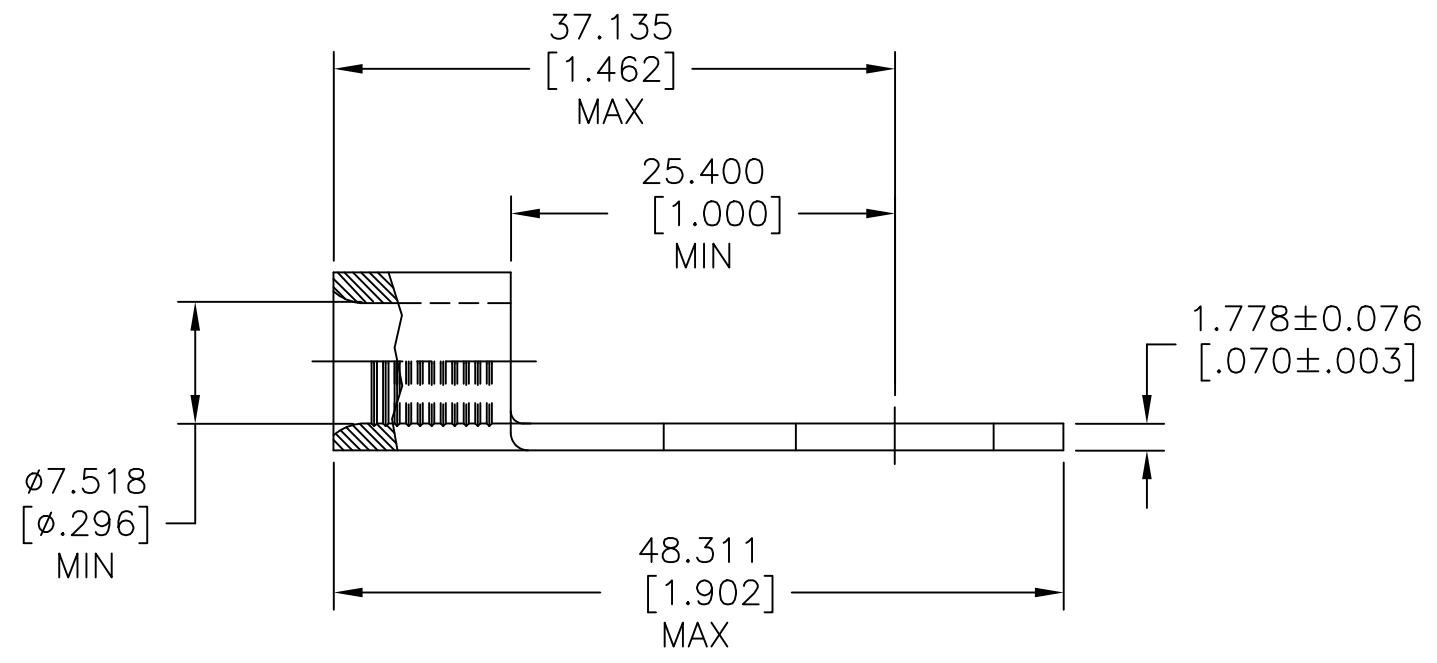


| REVISIONS | | | | | |
|-----------|-----|---------------------------|-----------|-----|------|
| P | LTR | DESCRIPTION | DATE | DWN | APVD |
| | J | REVISED PER ECR-09-020122 | 24SEP09 | HMR | TM |
| | J1 | REVISED PER ECO-17-008808 | 09MAR2018 | RS | DR |



| | |
|----------------------------|-------------------|
| AMP WIRE RANGE | E13288 Listed |
| 4 AWG SOLID OR STRANDED | 4 AWG STRANDED |
| LR7189 Certified | |
| 4 AWG SOLID OR STRANDED | |

- STAMP AMP 4* APPROX AS SHOWN.
- MS 20659-145 CLASS 2
- UL 486 A-B OR SAE AS7928



| | | |
|----------|----------------|---------|
| 100 | LOOSE PIECE | 327175 |
| QUANTITY | PACKAGING TYPE | PART NO |

| | | | | | | | | | |
|--|--|---|---|--|--------------------------------|----------------------|-----------|------------|---------------|
| AMP INCORPORATED CUSTOMER SERVICE SYSTEMS | | MAX RECOMMENDED OPERATING TEMPERATURE: 170°C [338°F] MAX | THIS DRAWING IS A CONTROLLED DOCUMENT. | | DWN TA BRINKMAN 3-29-93 | TE Connectivity Ltd. | | | |
| FOR ADDITIONAL PRODUCT INFORMATION OR COPIES OF DRAWINGS AND TECHNICAL DOCUMENTS | PRODUCT INFORMATION CENTER 1-800-522-6752 | VOLTAGE RATING: N/A | DIMENSIONS: mm [INCHES] | TOLERANCES UNLESS OTHERWISE SPECIFIED: | CHK DA PATTERSON 3-29-93 | | | | |
| FOR APPLICATION TOOLING INFORMATION | TOOLING ASSISTANCE CENTER 1-800-722-1111 | WIRE CROSS SECTIONAL AREA RANGE 16.8-26.7mm² [33,100-52,600] CIR MILLS SOLID OR STRANDED | | 0 PLC ± - 1 PLC ± - 2 PLC ± - 3 PLC ± 0.127 [.005] 4 PLC ± - ANGLES ± - | APVD DE MILLER 3-29-93 | PRODUCT SPEC | | | |
| FOR ORDER ENTRY | 1-800-526-5142 | THIS DRAWING IS A CONTROLLED DOCUMENT FOR AMP INCORPORATED. IT IS SUBJECT TO CHANGE AND THE CONTROLLING ENGINEERING ORGANIZATION SHOULD BE CONTACTED FOR THE LATEST REVISION. | MATERIAL COPPER PER ASTM B152 ANNEALED | FINISH TIN PLATE 0.00254 [.000100] MIN THK PER ASTM B545 | PRODUCT SPEC | SIZE | CAGE CODE | DRAWING NO | RESTRICTED TO |
| | | | | | WEIGHT | A3 | 00779 | C=327175 | - |
| | | | | | CUSTOMER DRAWING | SCALE | 2:1 | SHEET | 1 OF 1 |
| | | | | | | | | REV | J1 |