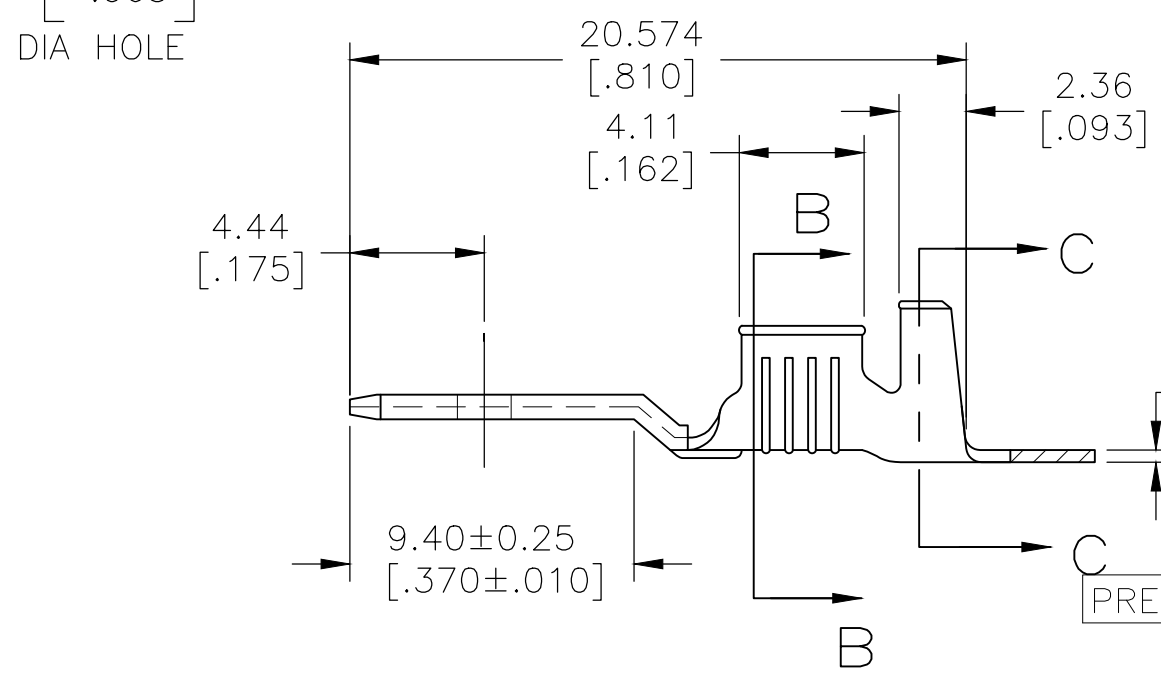
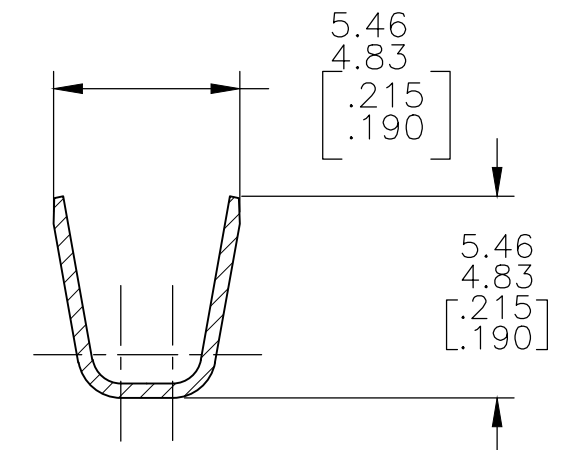
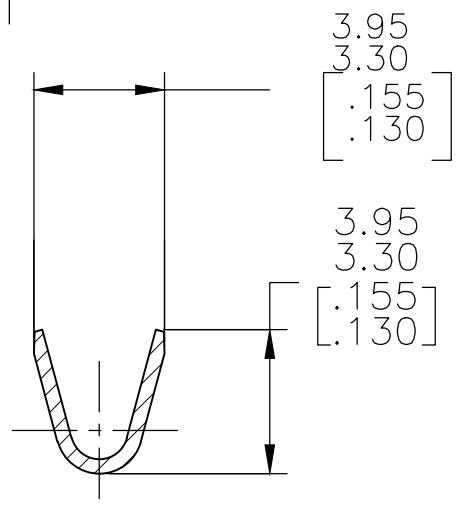
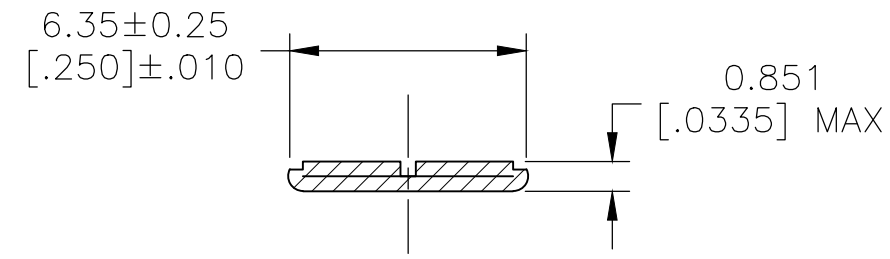
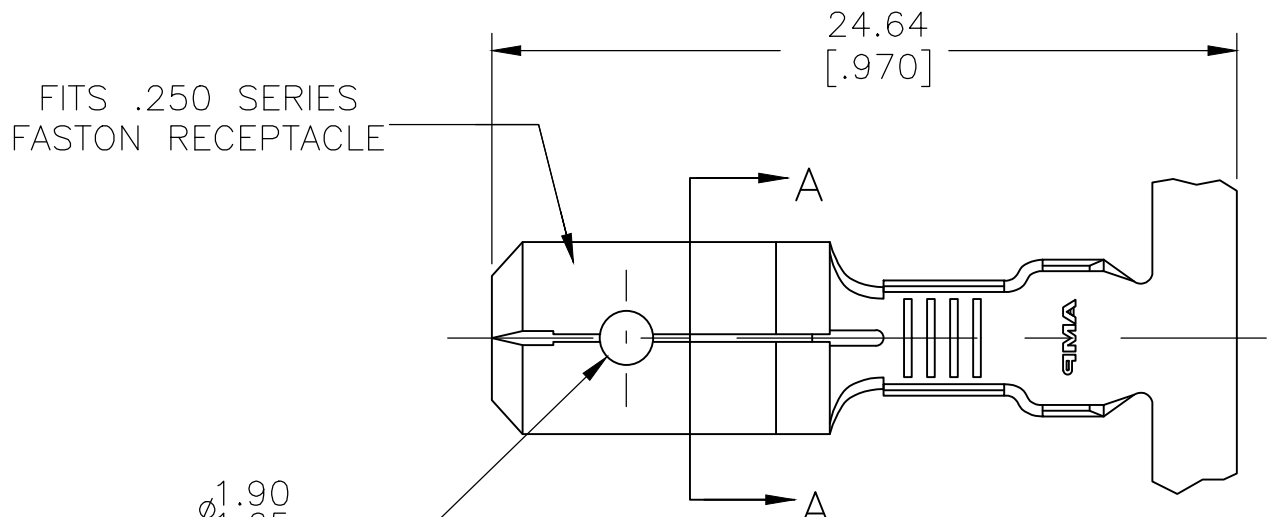


THIS DRAWING IS UNPUBLISHED. RELEASED FOR PUBLICATION
 © COPYRIGHT - By - ALL RIGHTS RESERVED.

P	LTR	DESCRIPTION	DATE	DWN	APVD
V1		REVISED PER ECR-19-009314	13JUN2019	BH	E.W



0.38±0.025
 [.015]±.001

PRELIMINARY	FINISH	INSULATION RANGE	WIRE SIZE	PART NO
6/4	PRE-TIN			42474-7
4	TIN			42474-7
5	-			42474-6
5	SILVER .000120 MIN	2.794-3.81 [.110-.150] DIA	18-14 AWG	42474-5
4	TIN			42474-4
3	-			42474-3
	TIN			42474-2
5	-			42474-1

- 1 CONTINUOUS STRIP ON REELS.
- 2 FEED TO BE .540#.005.
- 3 REVERSED REEL OF 42474-1.
- 4 REVERSED REEL OF 42474-2.
- 5 FOREIGN PRODUCTION ONLY.
- 6 LUBRICANT APPLIED AFTER TIN PLATING.

THIS DRAWING IS A CONTROLLED DOCUMENT.		DWN JR RUTH 1/31/91	STE TE Connectivity		
DIMENSIONS: mm [INCHES]		CHK MS FEHER 1/31/91			
TOLERANCES UNLESS OTHERWISE SPECIFIED:		APVD C MEYERS 1/31/91	NAME TAB, FASTON™ .250 SERIES		
0 PLC ± - 1 PLC ± - 2 PLC ± - 3 PLC ± .015 4 PLC ± - ANGLES ± -		PRODUCT SPEC -	APPLICATION SPEC -		
MATERIAL BRASS	FINISH SEE TABLE	WEIGHT 0.000000	SIZE A3	CAGE CODE 00779	DRAWING NO C-42474
CUSTOMER DRAWING			SCALE 4:1	SHEET 1 OF 1	REV V1