

THIS DRAWING IS UNPUBLISHED.

RELEASED FOR PUBLICATION

20

© COPYRIGHT 20 BY -

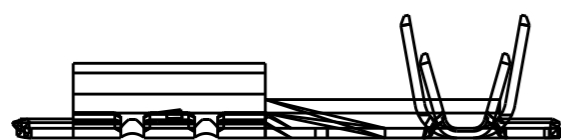
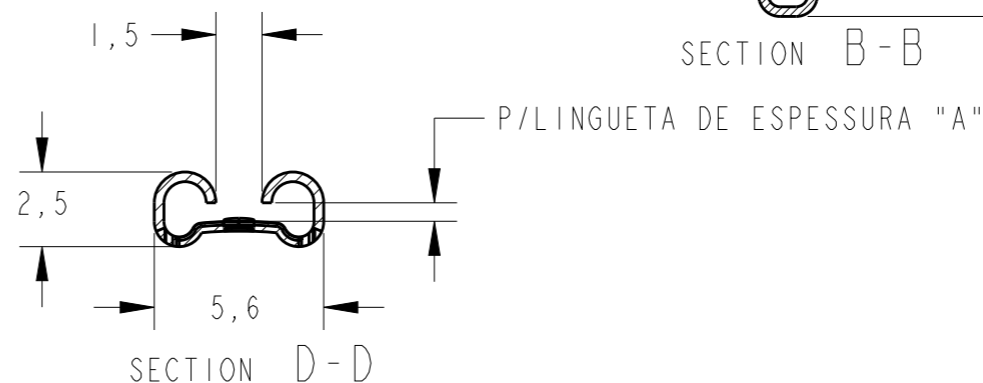
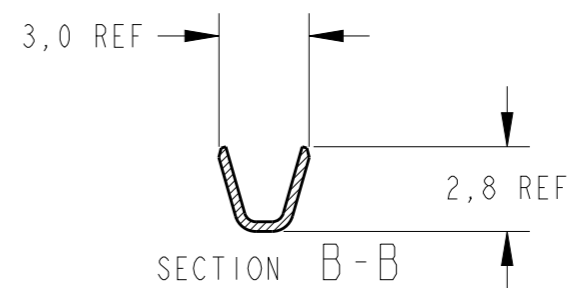
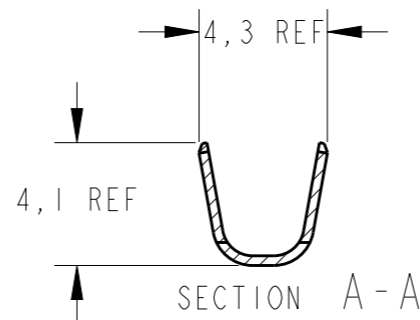
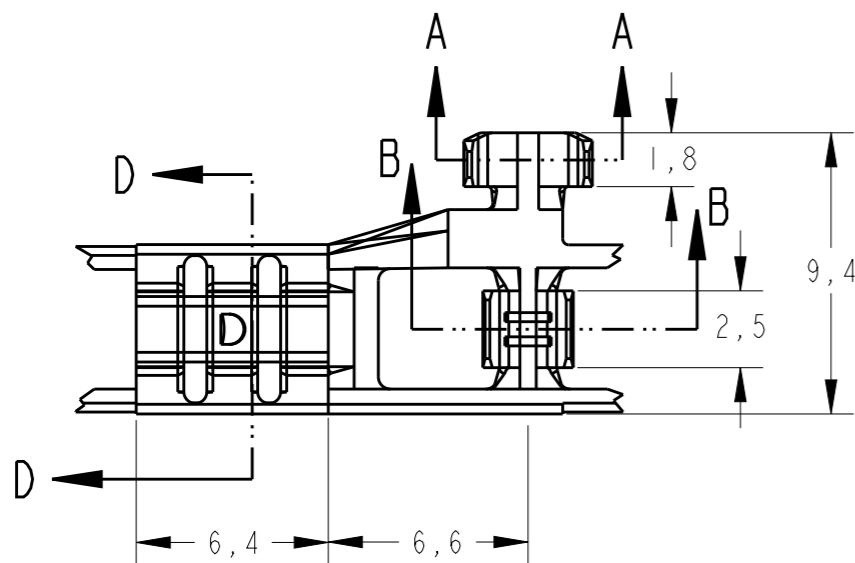
ALL RIGHTS RESERVED.

LOC
AP

DIST
-

REVISIONS

P	LTR	DESCRIPTION	DATE	DWN	APVD
	L	REV. BY ECO-08-013701	03JUNE08	HC	WLS
	LI	REV. BY ECO 15-002218	02FEB2015	HC	WLS



OBSOLETE	0,8	626413-7	ESTANHADO	BRONZE FOSF.	626412-7
OBSOLETE	0,5	626413-6	-	BRONZE FOSF.	626412-6
OBSOLETE	0,8	626413-5	-	BRONZE FOSF.	626412-5
-	0,8	626413-4	ESTANHADO	LATÃO	626412-4
-	0,8	626413-3	-	LATÃO	626412-3
-	0,5	626413-2	ESTANHADO	LATÃO	626412-2
-	0,5	626413-1	-	LATÃO	626412-1
	ESPESSURA "A"	LOOSE PIECE PN	FINISH	MATERIAL	PART NUMBER

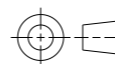
THIS DRAWING IS A CONTROLLED DOCUMENT.

DWN H.C.CANTERI 12FEB2003
 CHK W.L.STEFANI 12FEB2003
 APVD H.C.CANTERI 12FEB2003



DIMENSIONS:
mm

TOLERANCES UNLESS OTHERWISE SPECIFIED:



0 PLC ±
 1 PLC ±0,4
 2 PLC ±
 3 PLC ±
 4 PLC ±
 ANGLES ±1°
 FINISH -

PRODUCT SPEC -
 APPLICATION SPEC -
 WEIGHT -

NAME
 .187 FLAG FASTON RECEP.

WIRE RANGE
 20/16AWG
 INS.DIA RANGE
 2,3/3,3mm

MATERIAL SEE TABLE

SIZE A3 CAGE CODE 00779 DRAWING NO C-626412 RESTRICTED TO -

Customer Drawing SCALE 4/1 SHEET 1 OF 1 REV LI