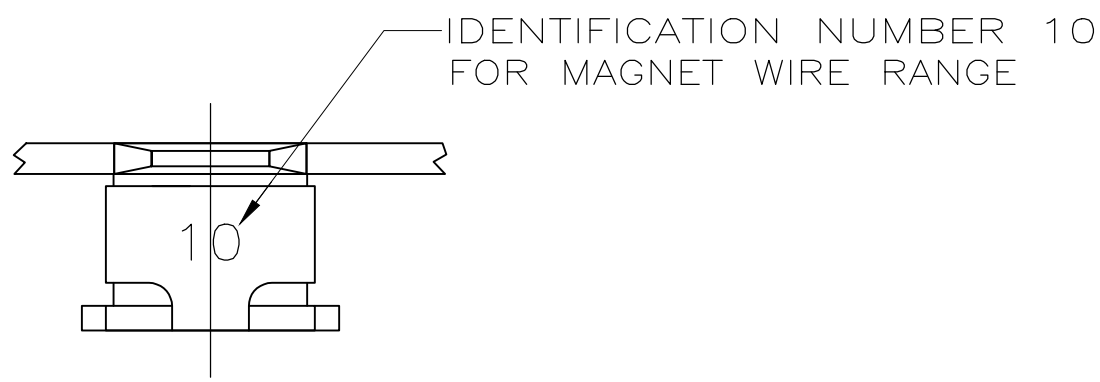
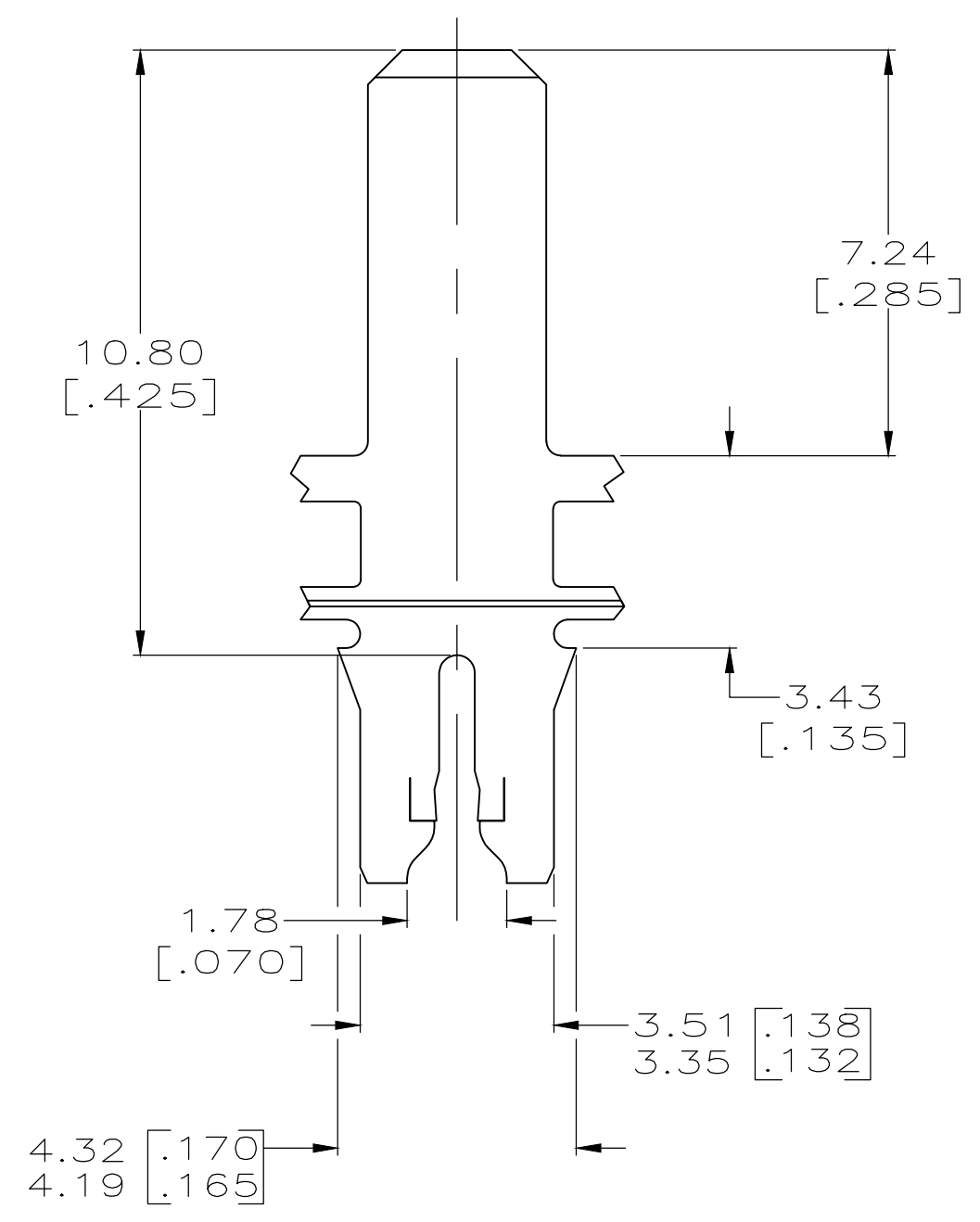
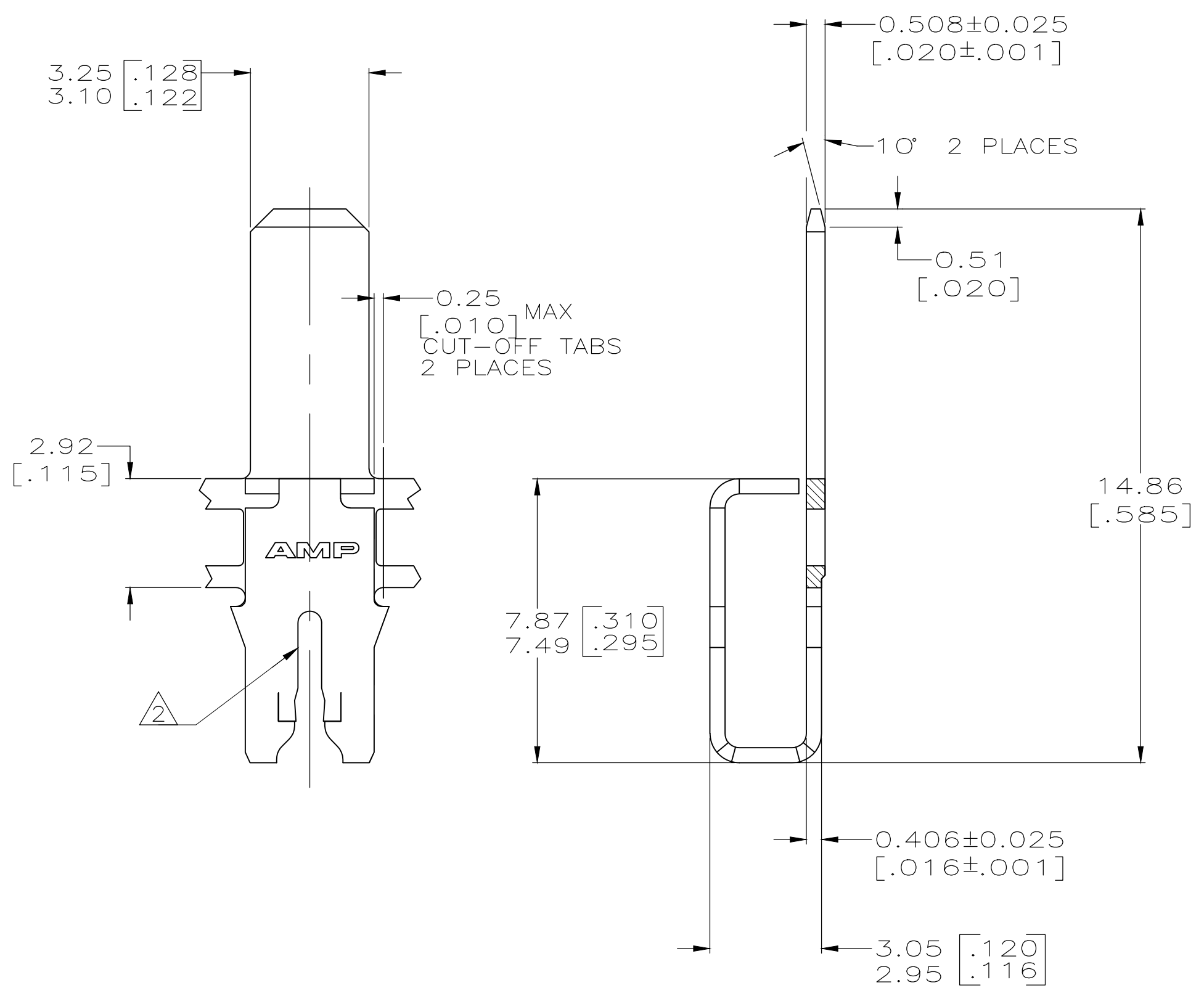


THIS DRAWING IS UNPUBLISHED. RELEASED FOR PUBLICATION  
 © COPYRIGHT - By - ALL RIGHTS RESERVED.

LOC	DIST	REVISIONS			
P	LTR	DESCRIPTION	DATE	DWN	APVD
AF	50	F2	REVISED PER ECR-19-013909	01OCT2019	PC MB



- 1 CONTINUOUS STRIP ON REELS WITH TERMINALS LOCATED ON  $5.59 \pm 0.08$  [ $.220 \pm .003$ ] CENTERS.
- 2 SLOT ACCEPTS A SINGLE  $0.36-0.57\text{mm}$  [#27-#23] AWG COPPER MAGNET WIRE. ALUMINIUM RANGE  $0.51-0.64\text{mm}$  [#24-#22] AWG, ALUMINIUM WIRE RANGE APPLIES FOR POST TIN PLATED PART NUMBERS ONLY.
- 3 TIN PLATE
- 4 TERMINALS ARE STRESS RELIEVED.



63489-1  
PART NUMBER

THIS DRAWING IS A CONTROLLED DOCUMENT.		DWN MICHAEL S. FEHER 28MAY96																				
DIMENSIONS: MM [ INCHES ]		CHK RICHARD GRZYBOWSKI 28MAY96																				
TOLERANCES UNLESS OTHERWISE SPECIFIED:		APVD GARY PORTA 29MAY96	NAME TAB, 3.18[.125] X 0.51[.020], MAG-MATE																			
<table border="0"> <tr><td>0 PLC</td><td>±</td><td>-</td></tr> <tr><td>1 PLC</td><td>±</td><td>-</td></tr> <tr><td>2 PLC</td><td>±</td><td>0.25[.010]</td></tr> <tr><td>3 PLC</td><td>±</td><td>-</td></tr> <tr><td>4 PLC</td><td>±</td><td>-</td></tr> <tr><td>ANGLES</td><td>±</td><td>-</td></tr> </table>		0 PLC	±	-	1 PLC	±	-	2 PLC	±	0.25[.010]	3 PLC	±	-	4 PLC	±	-	ANGLES	±	-	PRODUCT SPEC 108-2012	SIZE A2	
0 PLC	±	-																				
1 PLC	±	-																				
2 PLC	±	0.25[.010]																				
3 PLC	±	-																				
4 PLC	±	-																				
ANGLES	±	-																				
MATERIAL BRASS		APPLICATION SPEC 114-2046	CAGE CODE 00779	DRAWING NO C-63489																		
FINISH 3 4		WEIGHT -	SCALE 8:1	SHEET 1 OF 1																		
CUSTOMER DRAWING			REV F2	RESTRICTED TO -																		