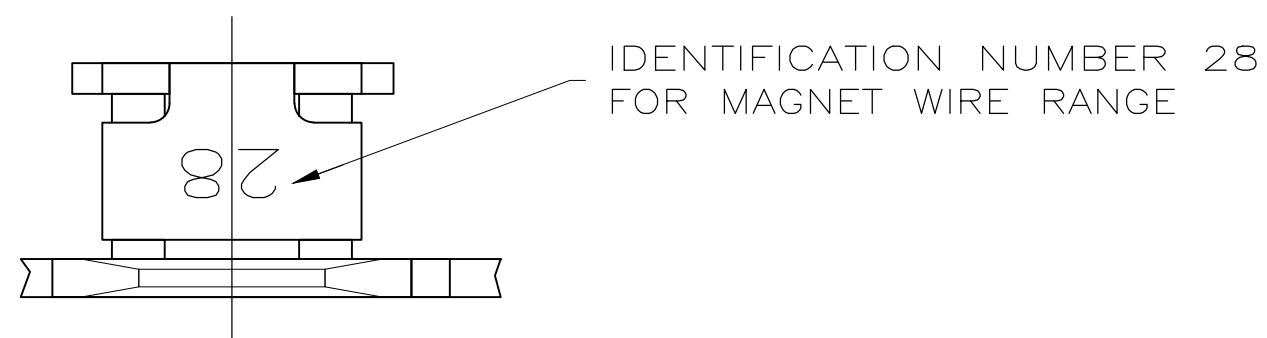
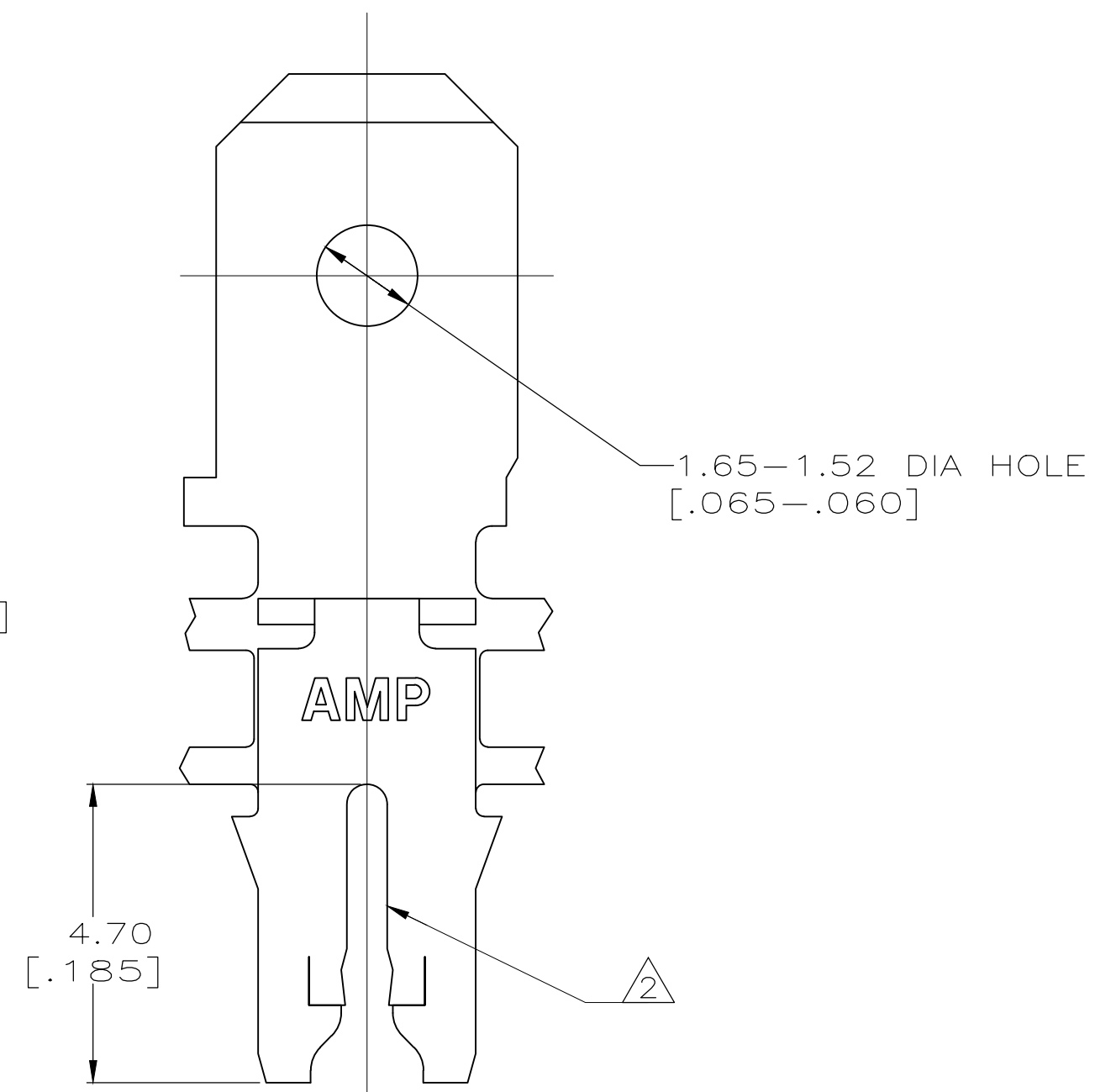
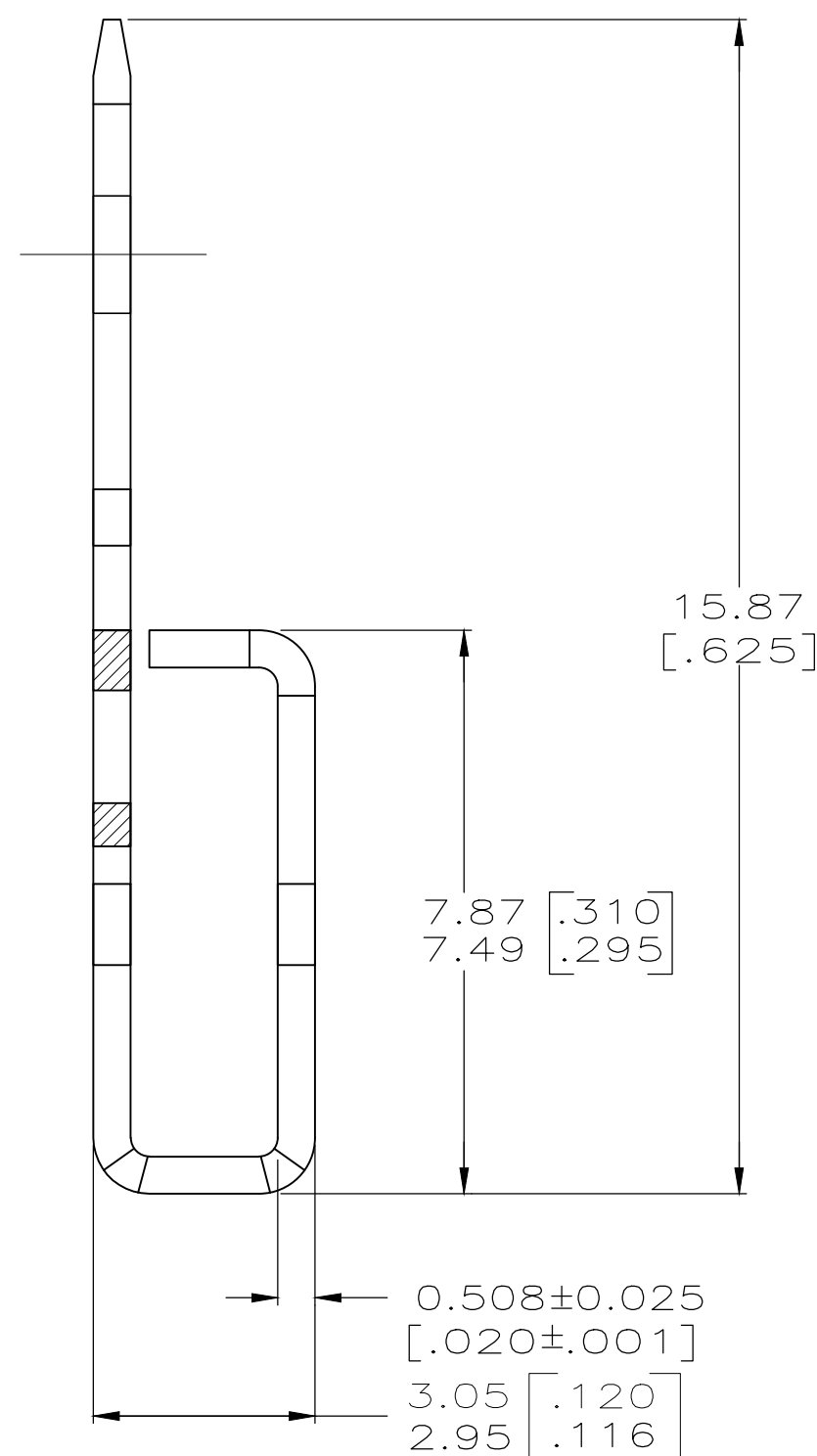
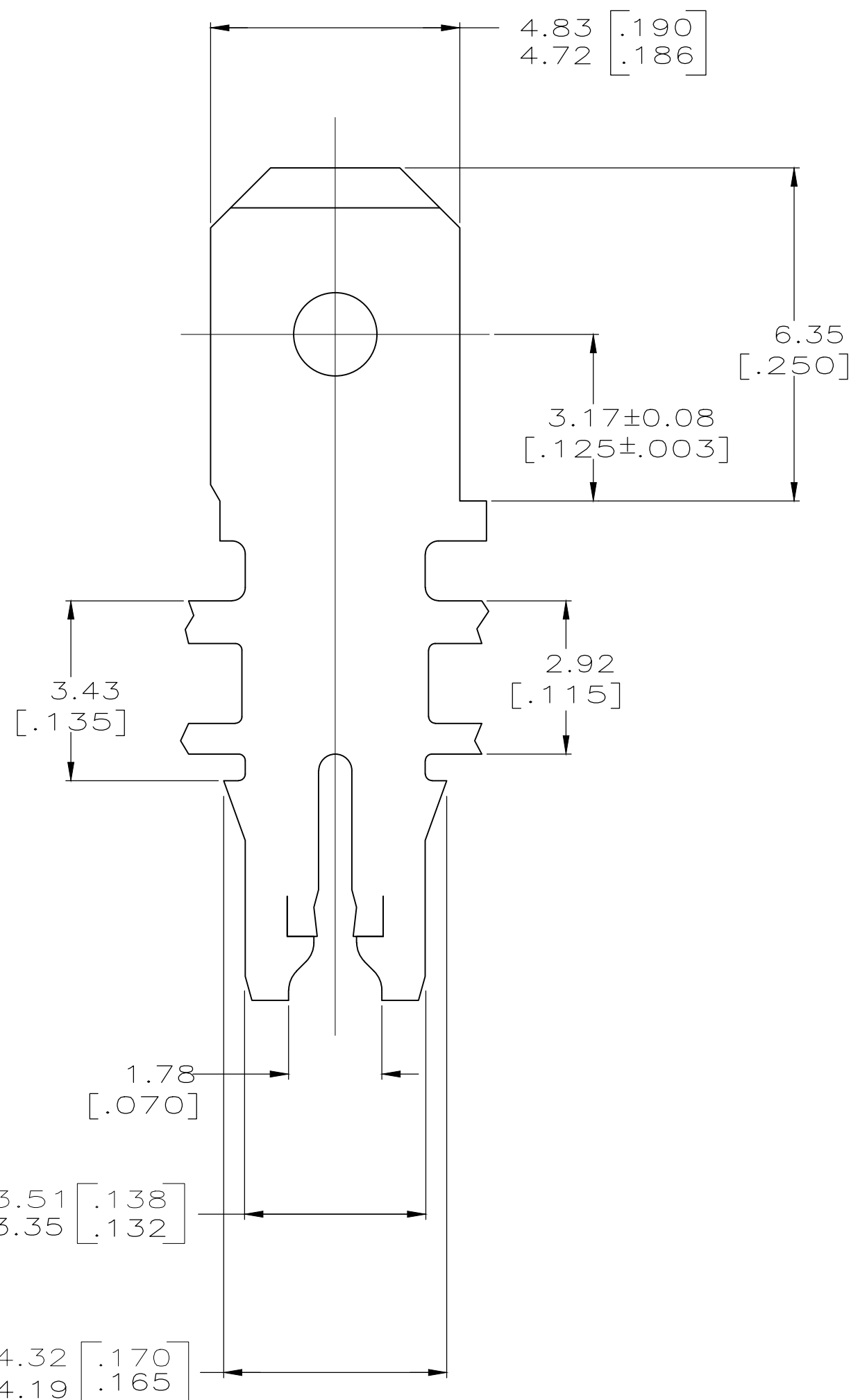


THIS DRAWING IS UNPUBLISHED. RELEASED FOR PUBLICATION  
 © COPYRIGHT - By - ALL RIGHTS RESERVED.

LOC	DIST	REVISIONS				
P	LTR	DESCRIPTION	DATE	DWN	APVD	
AF	50	E2	REVISED PER ECR-19-014370	30SEP2019	JA	PKS



- 1 CONTINUOUS STRIP ON REELS WITH TERMINALS LOCATED ON  $5.59 \pm 0.08$  [ $.220 \pm .003$ ] CENTERS.   
 $\triangle 2$  SLOT TERMINATES A SINGLE MAGNET WIRE ONLY.   
 COPPER RANGE: 0.91-1.15mm [#19-#17] AWG.   
 ALUMINUM RANGE: 1.02-1.22mm [#18-#16.5] AWG,   
 WITH CAVITY ANVIL HEIGHT TO BE  $2.29 \pm 0.13$  [ $.090 \pm .005$ ]   
 FOR ALUMINIUM WIRE ONLY. ALUMINIUM WIRE RANGE APPLIES FOR   
 POST TIN PLATED PARTS ONLY.
- 3 AFTER INSERTION INTO PLASTIC HOLDER TAB PORTION MUST BE BENT OVER  $45^\circ$  TO  $90^\circ$  OR   
 POTTED-IN TO PREVENT PULL-OUT WHEN MATING   
 RECEPTACLE IS DISCONNECTED.
- $\triangle 4$  TIN PLATE



63665-1  
 Part Number

THIS DRAWING IS A CONTROLLED DOCUMENT.		DWN MICHAEL S. FEHER 9/4/92																
DIMENSIONS: INCHES		CHK JEFF R. RUTH 9/7/92																
TOLERANCES UNLESS OTHERWISE SPECIFIED:		APVD NELSON E NEFF 9/15/92	NAME TERMINAL, TAB, 4.75 [.187] FASTON, MAG-MATE															
<table border="0"> <tr><td>0 PLC</td><td>± -</td></tr> <tr><td>1 PLC</td><td>± -</td></tr> <tr><td>2 PLC</td><td>± 0.25 [.010]</td></tr> <tr><td>3 PLC</td><td>± -</td></tr> <tr><td>4 PLC</td><td>± -</td></tr> <tr><td>ANGLES</td><td>± -</td></tr> </table>		0 PLC	± -	1 PLC	± -	2 PLC	± 0.25 [.010]	3 PLC	± -	4 PLC	± -	ANGLES	± -	PRODUCT SPEC 108-2012	SIZE A2	CAGE CODE 00779	DRAWING NO C-63665	RESTRICTED TO -
0 PLC	± -																	
1 PLC	± -																	
2 PLC	± 0.25 [.010]																	
3 PLC	± -																	
4 PLC	± -																	
ANGLES	± -																	
MATERIAL 4M BRASS	FINISH $\triangle 4$	APPLICATION SPEC 114-2046 $\triangle 2$	WEIGHT -	SCALE 10:1	SHEET 1 of 1	REV E2												
CUSTOMER DRAWING																		