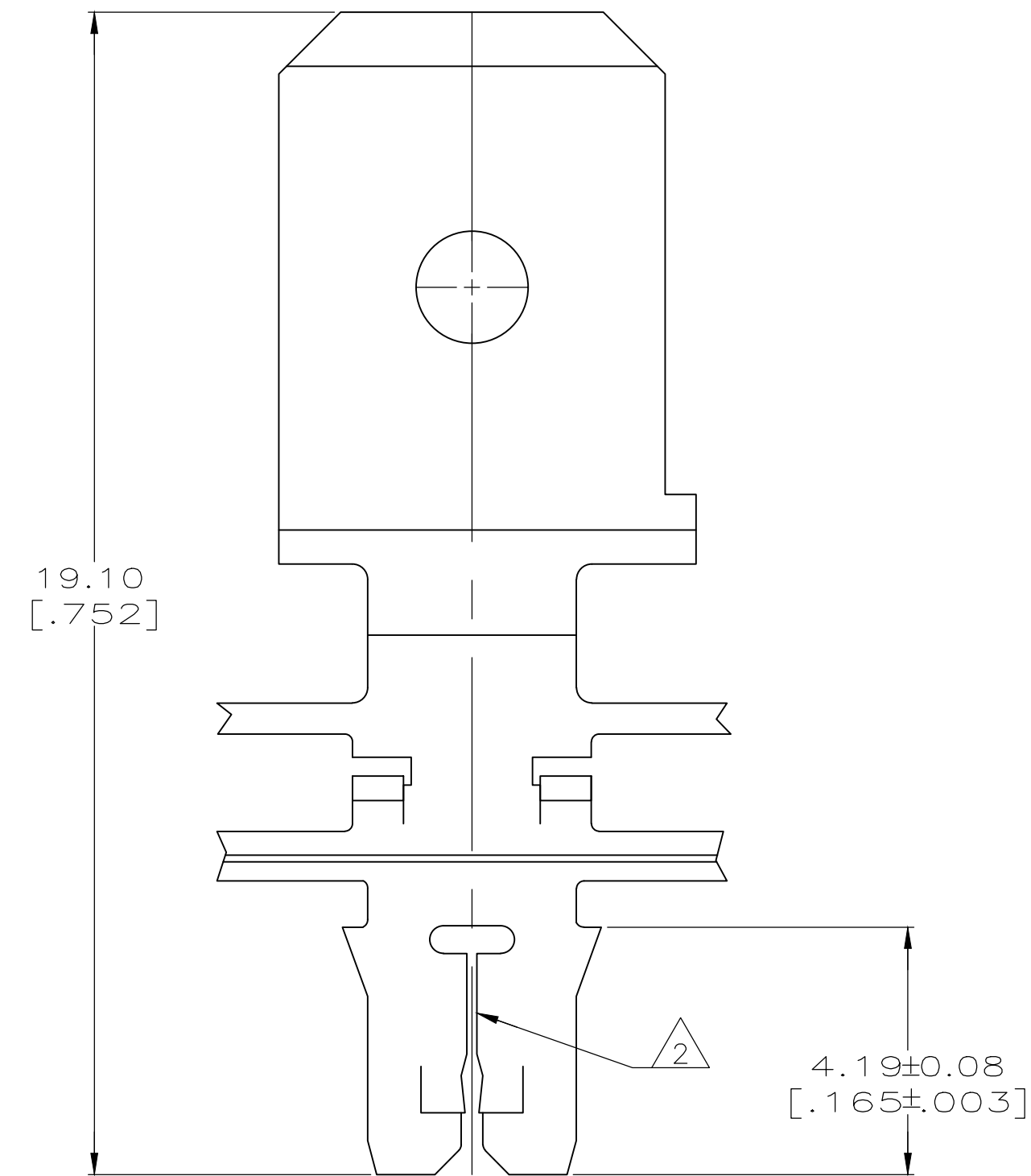
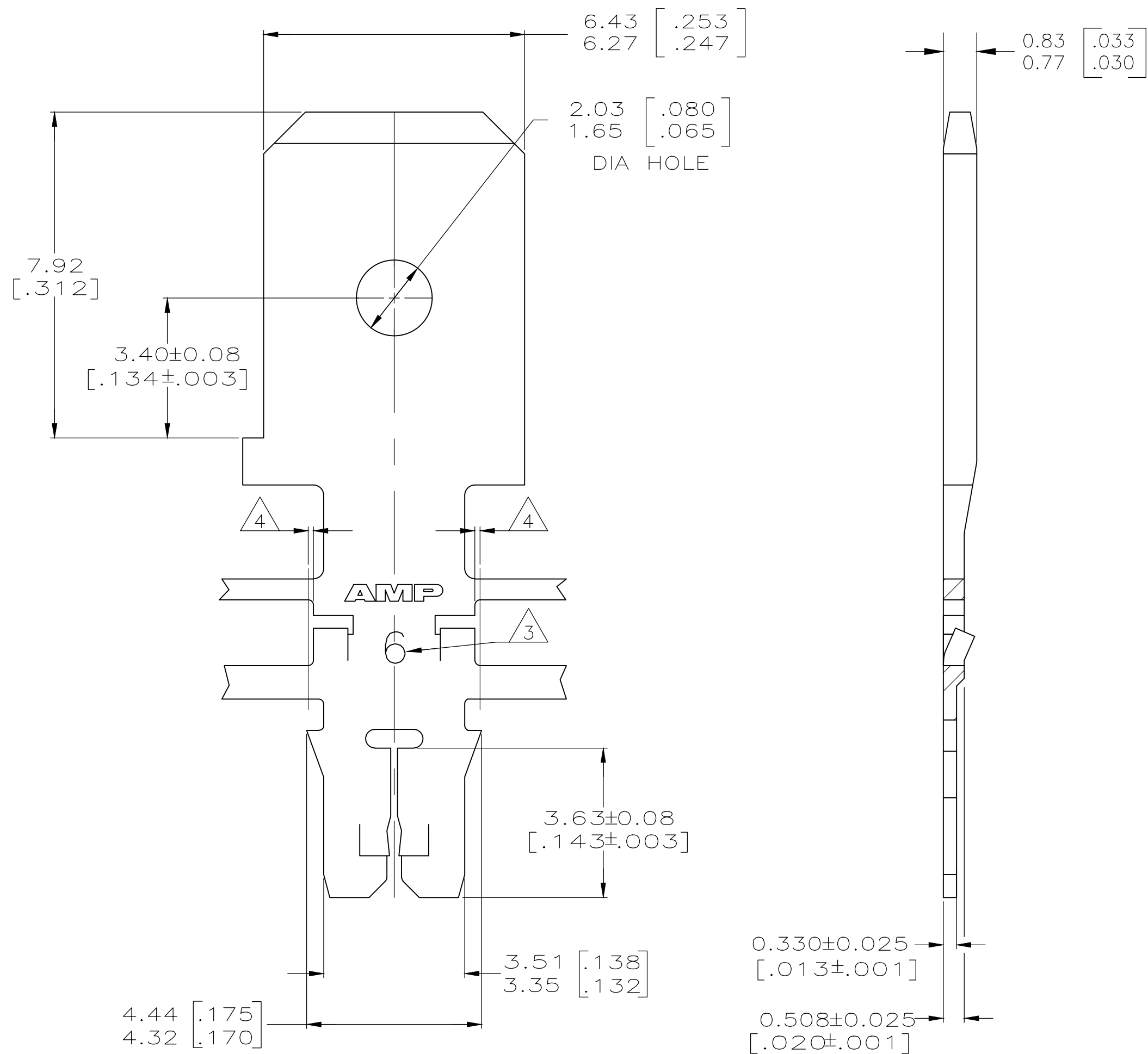


THIS DRAWING IS UNPUBLISHED. RELEASED FOR PUBLICATION
 © COPYRIGHT - TE Connectivity Ltd. ALL RIGHTS RESERVED.

REVISIONS					
P	LTR	DESCRIPTION	DATE	DWN	APVD
G2		REVISED PER ECR-18-018655	11DEC2018	BW	SV

- 1 CONTINUOUS STRIP ON REELS WITH TERMINALS LOCATED ON 8.38±0.08 [.330±.003] CENTERS.
- 2 SLOT ACCEPTS 0.25-0.32mm [#30-#28] AWG COPPER MAGNET WIRE. TWO WIRES OF THE SAME SIZE MAX PER SLOT
- 3 IDENTIFICATION NUMBER 6 FOR THE MAGNET WIRE SLOT SIZE
- 4 0.25 [.010] MAX CARRIER CUT-OFF TABS.
- 5 PRE-PRODUCTION - F.A.S.R. REQUIRED.



OBSOLETE	082 PRE-MILLED BRASS	5	63717-2
	4M PRE-MILLED BRASS		63717-1
MATERIAL		PART NUMBER	

THIS DRAWING IS A CONTROLLED DOCUMENT.		DWN	L.A.MAYER	9-27-93	 TE Connectivity Ltd.
DIMENSIONS: mm[INCHES]		CHK	M.S. FEHER	9-27-93	
TOLERANCES UNLESS OTHERWISE SPECIFIED:		APVD	A.HUNT	9-27-93	
0 PLC	± -	PRODUCT SPEC	108-1484	NAME	TAB, 6.35 [.250] FASTON™
1 PLC	± -	APPLICATION SPEC	114-2140	SIZE	MAG-MATE™ Slim Line
2 PLC	± 0.13 [.005]	FINISH	0.002032 [.000080] MIN TIN PLATE	CAGE CODE	A2 00779
3 PLC	± -	WEIGHT	-	DRAWING NO	C=63717
4 PLC	± -	CUSTOMER DRAWING		RESTRICTED TO	-
ANGLES	± -	SCALE	10:1	SHEET	1 of 1
MATERIAL	SEE TABLE	REV	G2		