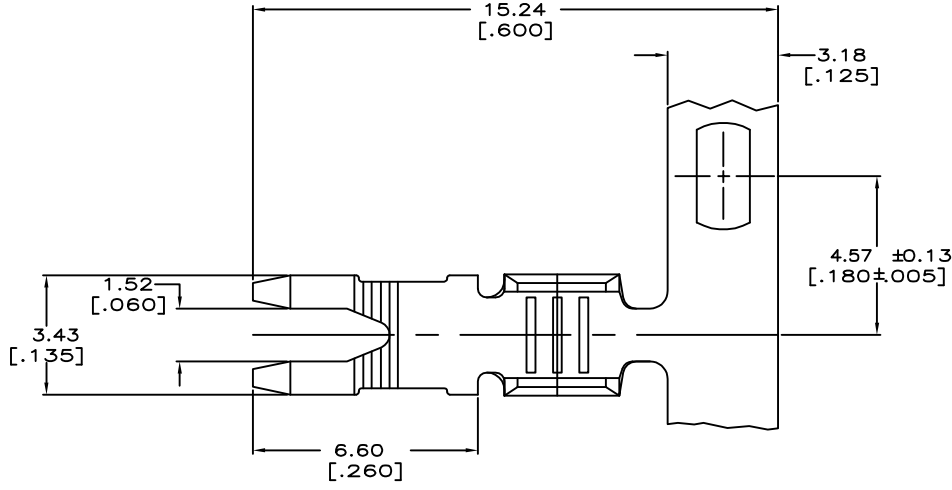
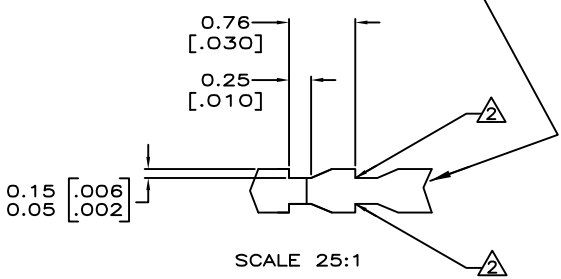
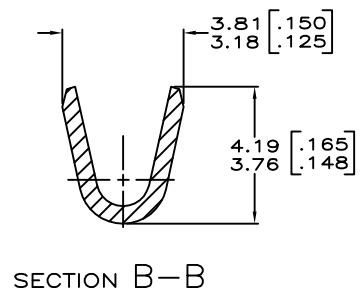
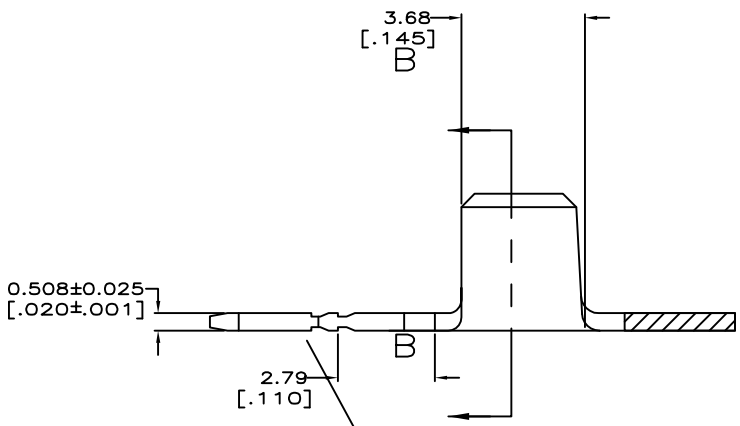


THIS DRAWING IS UNPUBLISHED. RELEASED FOR PUBLICATION
 © COPYRIGHT - By - ALL RIGHTS RESERVED.

LOC		DST		REVISIONS			
P	LTR	DESCRIPTION	DATE	DRN	APRD		
AF	50						
B1		ECR-13-017177	05NOV13	PKS	RRP		



1 CONTINUOUS STRIP ON REELS
 FOR OPTIMUM RETENTION IN POKE-IN TYPE MAG-MATE TERMINALS,
 ONE OF THE SERRATIONS, AS SHOWN, MUST BE ENGAGED WITH
 THE EDGE OF THE LEAF



0.8-2.0 mm ² [18 - 14] AWG WIRE RANGE	63775-1
--	---------

THIS DRAWING IS A CONTROLLED DOCUMENT.		DRN: MICHAEL S. FEJER 08/FEB/04	TE Connectivity	
DIMENSIONS: INCHES		CHK: JEFF R. RUTH 09/FEB/04	NAME: -	
TOLERANCES UNLESS OTHERWISE SPECIFIED:		APVD: -	PRODUCT SPEC: -	
0 PLC ± -	1 PLC ± -	APPLICATION SPEC: 114-2050		
2 PLC ± 0.25 [.010]	3 PLC ± -	SIZE: A2	CAGE CODE: 00779	DRAWING NO: 63775
4 PLC ± -	ANGLES ± -	WEIGHT: -	RESTRICTED TO: -	
MATERIAL: BRASS	FINISH: TIN PLATE	CUSTOMER DRAWING	SCALE: 10:1	SHEET: 1 of 1
			REV: B1	