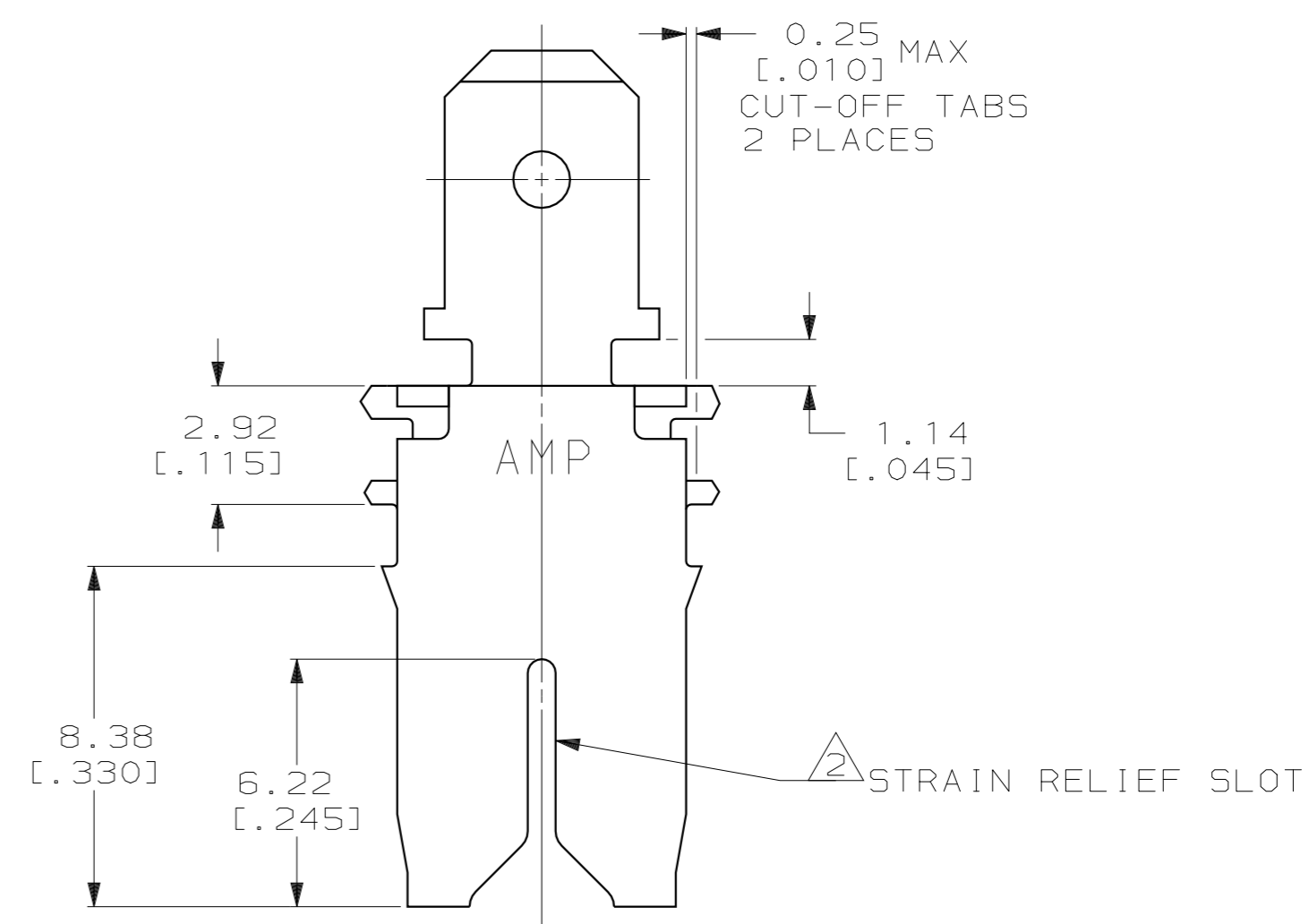
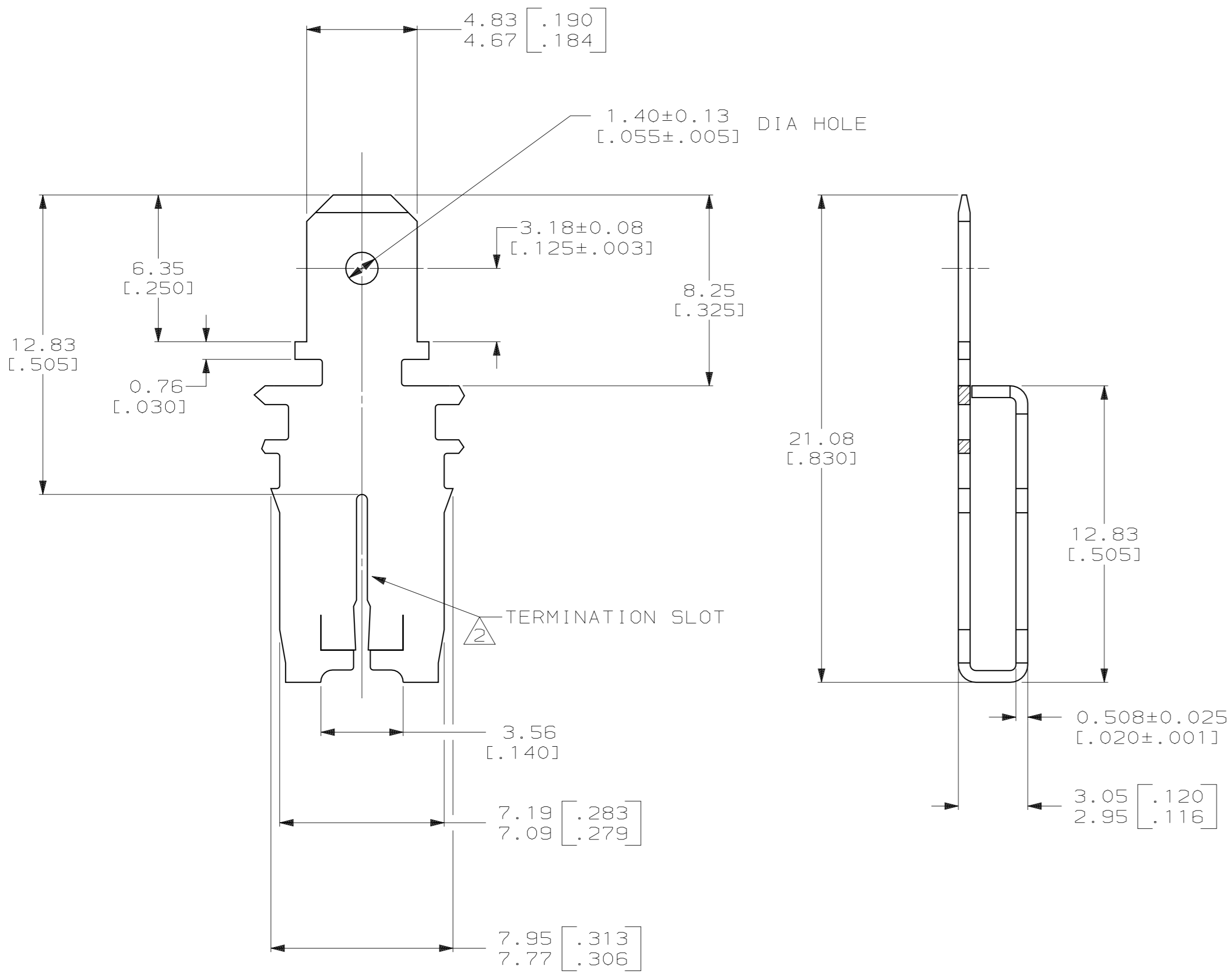
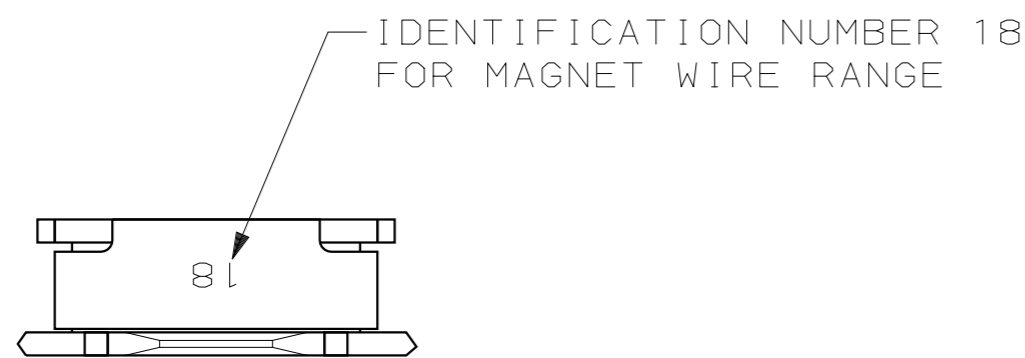


THIS DRAWING IS UNPUBLISHED. RELEASED FOR PUBLICATION
 BY AMP INCORPORATED. ALL RIGHTS RESERVED.

LOC		DIST		REVISIONS			
P	LTR	DESCRIPTION		DATE	DWN	APVD	
AF	50	C	REV PER	0L10-0373-97	10SEP97	RG	NN

- CONTINUOUS STRIP ON REELS WITH TERMINALS LOCATED ON 8.38±0.08 [.330±.003] CENTERS.
- SLOT TERMINATES EITHER A SINGLE OR DOUBLE MAGNET WIRE OF THE SAME SIZE AND TYPE. COPPER RANGE: 0.64-0.81mm [#22-#20] AWG.
- AFTER INSERTION INTO PLASTIC HOLDER, TAB PORTION MUST BE BENT OVER 45° TO 90° OR POTTED-IN TO PREVENT PULL-OUT WHEN MATING RECEPTACLE IS DISCONNECTED.
- THIS DRAWING IS RESTRICTED TO G.S. ELECTRIC



PROPOSED DESIGN
 NOT RELEASED FOR
 PRODUCTION

63983-1
 PART NUMBER

THIS DRAWING IS A CONTROLLED DOCUMENT.		DWN 09APR97 MICHAEL S. FEHER	AMP Incorporated Harrisburg, PA 17105-3608
DIMENSIONS: mm [INCHES]		CHK 09APR97 RICHARD GRZYBOWSKI	
TOLERANCES UNLESS OTHERWISE SPECIFIED:		APVD 09APR97 NELSON E. NEFF	NAME TAB, 4.75 [.187] FASTON,™
0 PLC ±-	1 PLC ±-	PRODUCT SPEC 108-2053	APPLICATION SPEC MAG-MATE™
2 PLC ±0.25 [.010]	3 PLC ±-	APPLIC. SPEC 114-2066	RESTRICTED TO
4 PLC ±-	ANGLES ±-	WEIGHT -	SCALE 6:1 SHEET 1 OF 1 REV C
MATERIAL 4M BRASS	FINISH 0.002032 [.000080] MIN TIN PER MIL-T-10727	CUSTOMER DRAWING	

NOT the LATEST REVISION