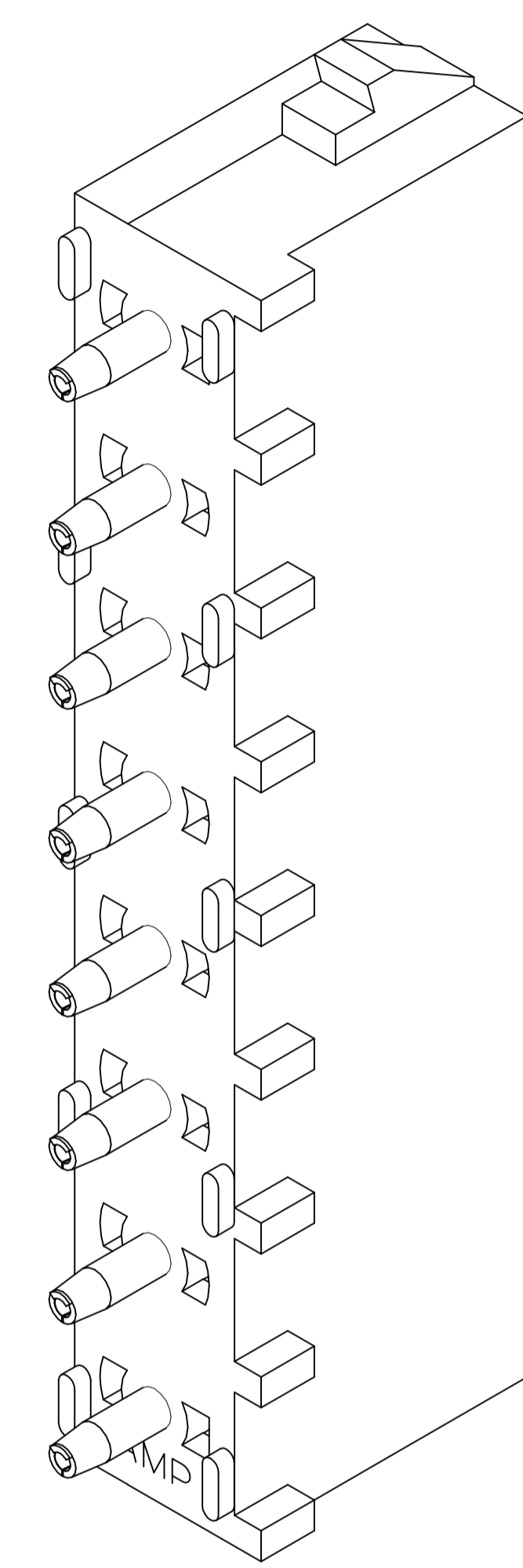
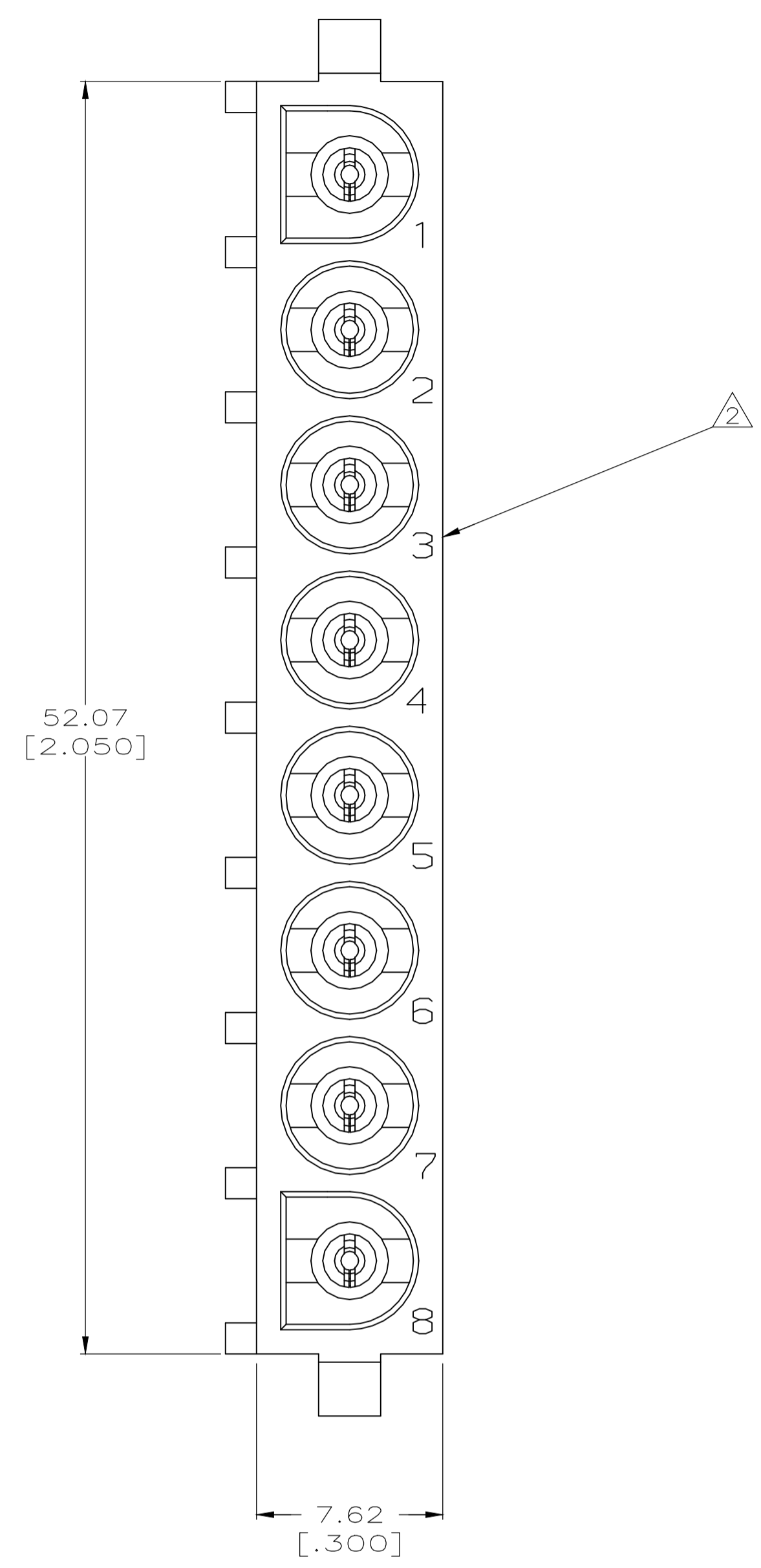
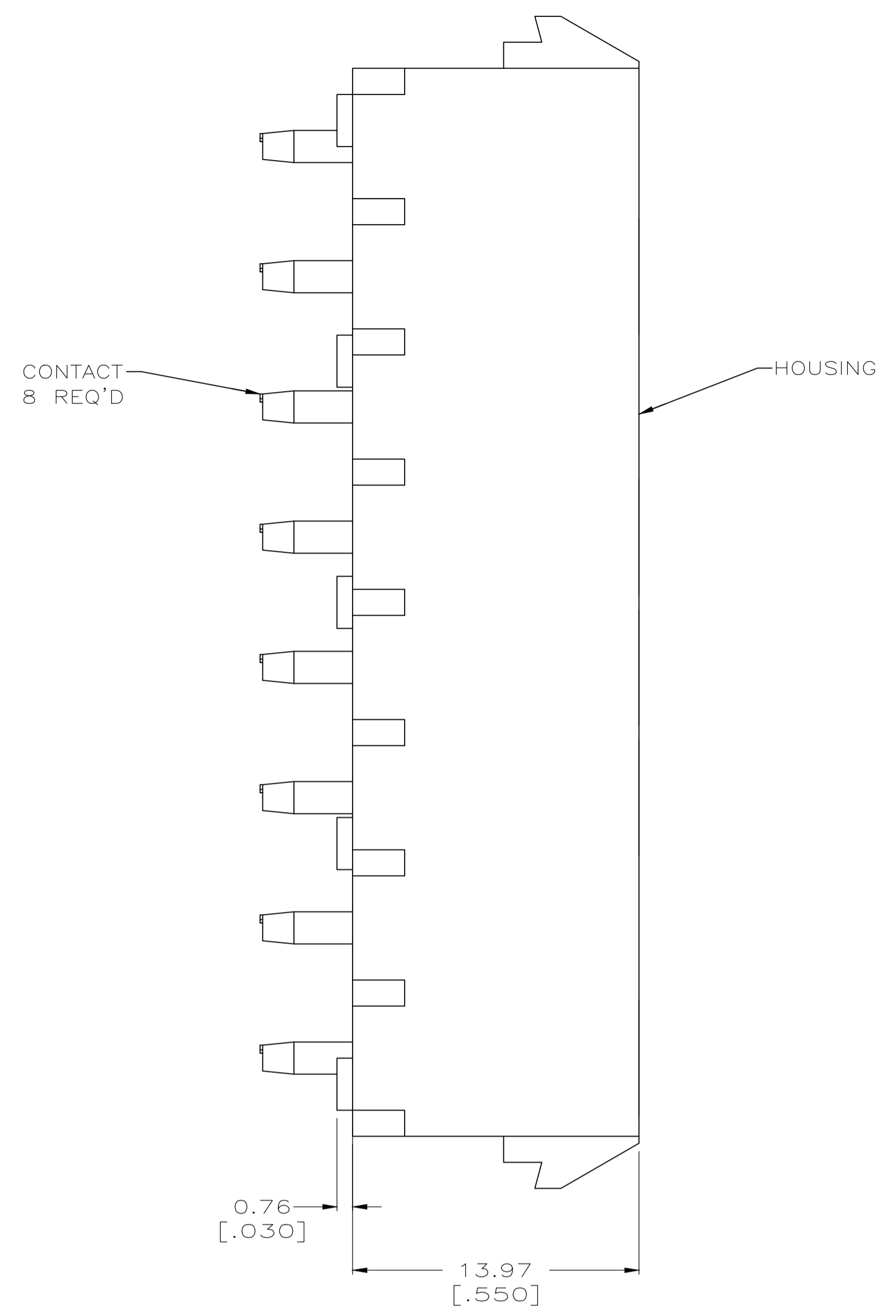
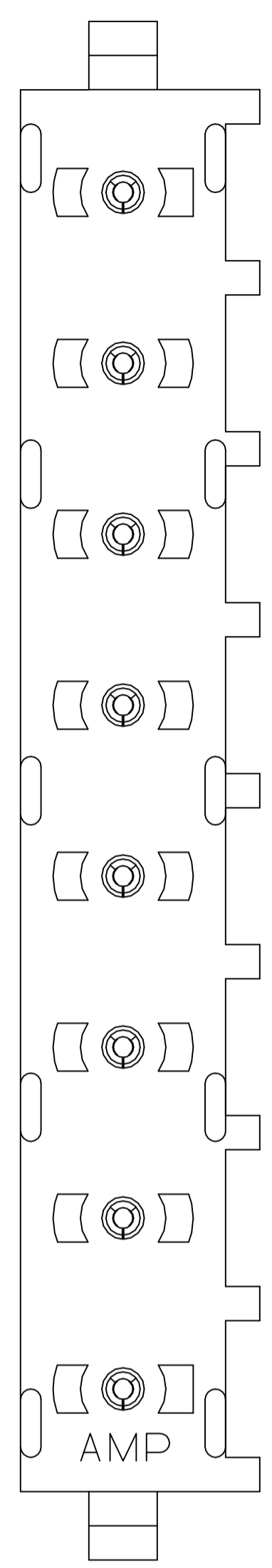
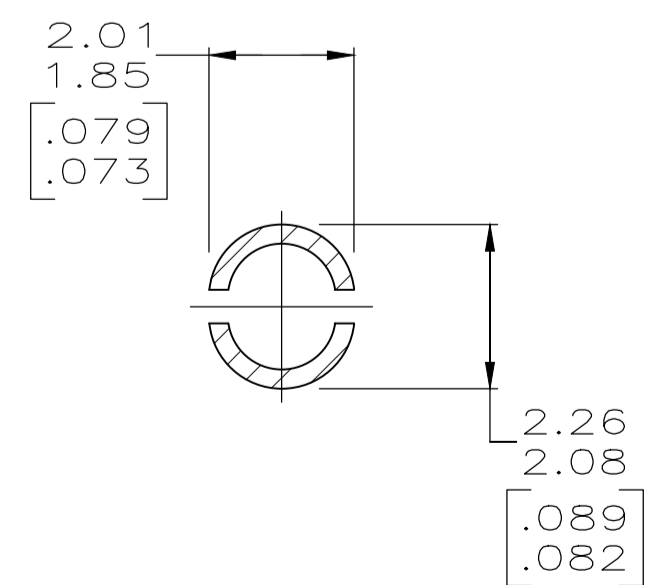
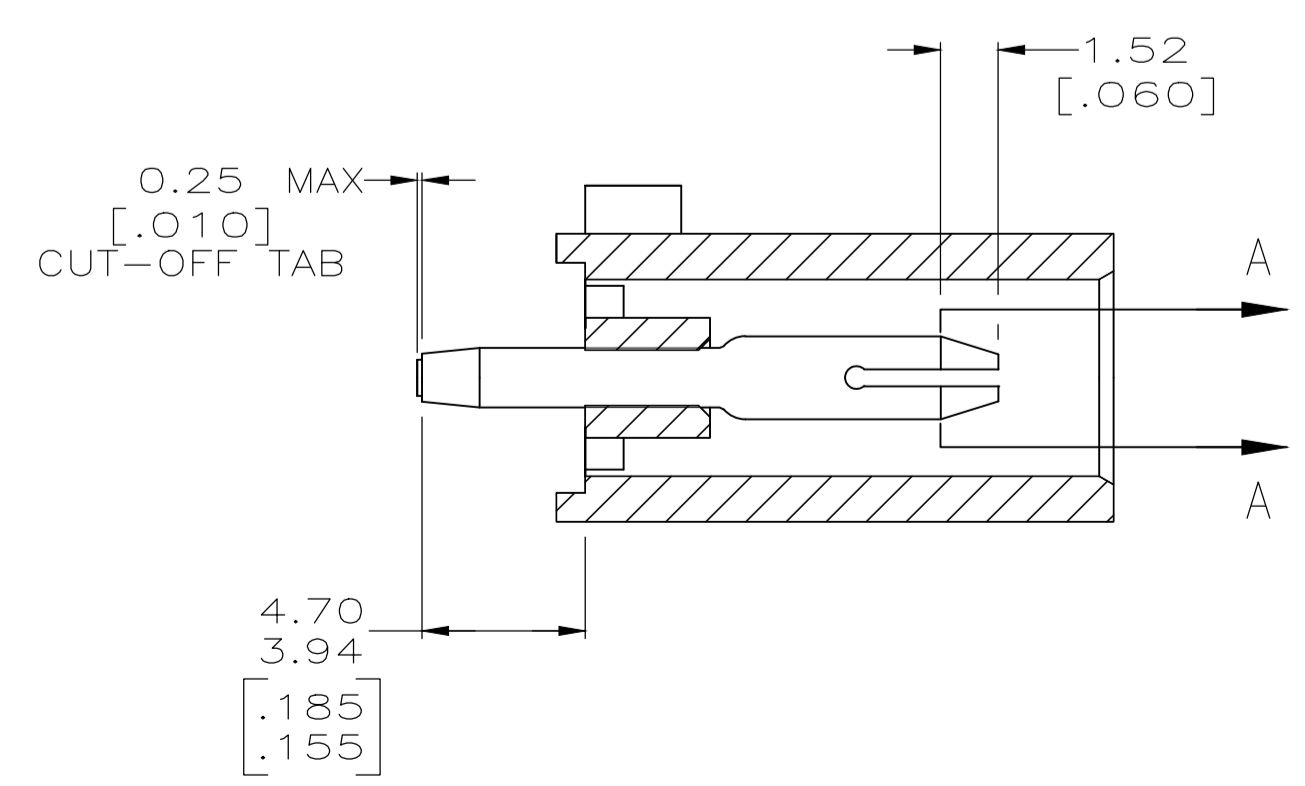


REVISIONS					
P	LYR	DESCRIPTION	DATE	DMN	APVD
J2		REVISED PER ECO-19-012183	06AUG2019	RS	SF

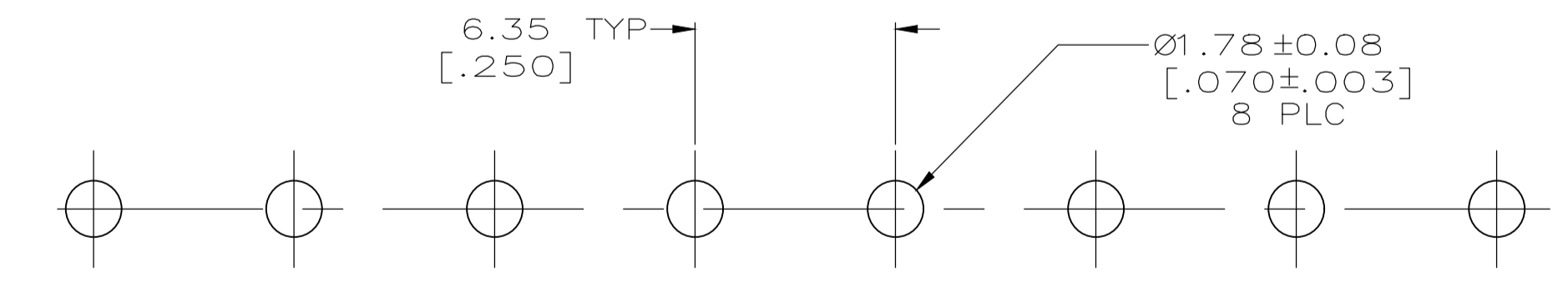
- PARTS COMPLY TO AMP SOLDERABILITY SPECIFICATION 109-11-3.
- CIRCUIT IDENTIFICATION CHARACTERS ARE ADJACENT TO THE INDICATED CAVITIES, BUT LOCATION AND ORIENTATION MAY DIFFER FROM PRINT.
- DIMENSIONS IN BRACKETS ARE IN INCHES.
- DIMENSIONS SHOWN REPRESENT PRODUCT IN DRY, AS MOLDED CONDITION. ADDITIONAL 2% GROWTH DUE TO SUBSEQUENT MOISTURE ABSORPTION MAY OCCUR AND SHOULD BE ACCOUNTED FOR



3-DIMENSIONAL MODEL NTS



SECTION A-A
SCALE 10:1



RECOMMENDED MOUNTING HOLE PATTERN FOR 1.57 [.062] THICK P.C. BOARD

PHOSPHOR BRONZE, PRE-TIN		NYLON,UL94V-2,NATURAL		641825-1	
PIN CONTACT MATERIAL AND FINISH		HOUSING MATERIAL		PART NO	
THIS DRAWING IS A CONTROLLED DOCUMENT.		DIN B LEWIS 10-05-98	TE Connectivity		
DIMENSIONS: mm [INCHES]		CHK R SWING 10-05-98	NAME		
TOLERANCES UNLESS OTHERWISE SPECIFIED:		APVD M TRULL 10-05-98	PRODUCT SPEC		
0 PLC ± -		APPLICATION SPEC			
1 PLC ± -		SIZE			
2 PLC ± 0.13 [.005]		CAGE CODE			
3 PLC ± -		DRAWING NO			
4 PLC ± -		RESTRICTED TO			
ANGLES ± #°30'		WEIGHT 0.000000			
MATERIAL SEE TABLE		FINISH SEE TABLE		A1 00779 C=641825	
		CUSTOMER DRAWING		SCALE 5:1 SHEET 1 OF 1 REV J2	

