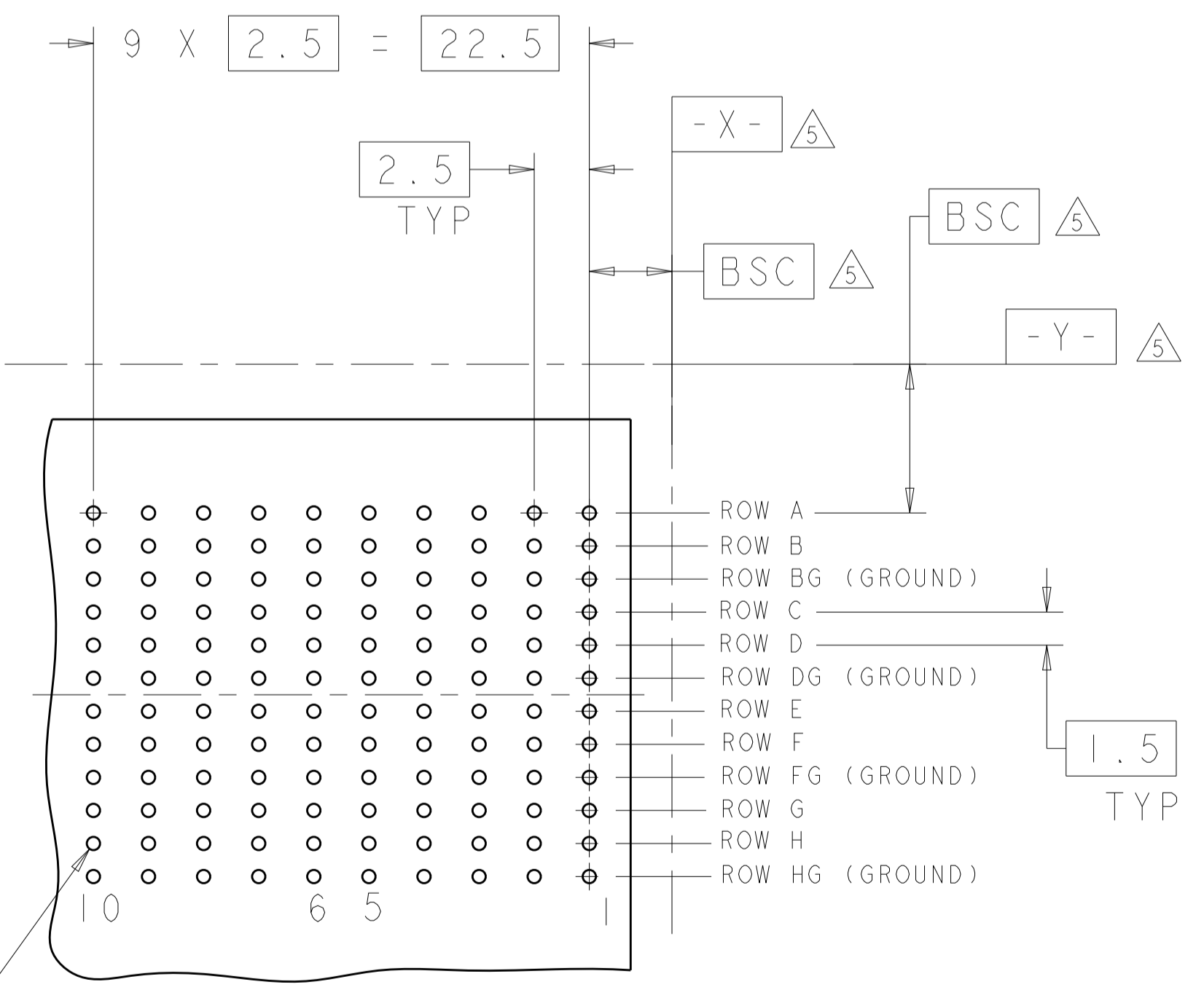
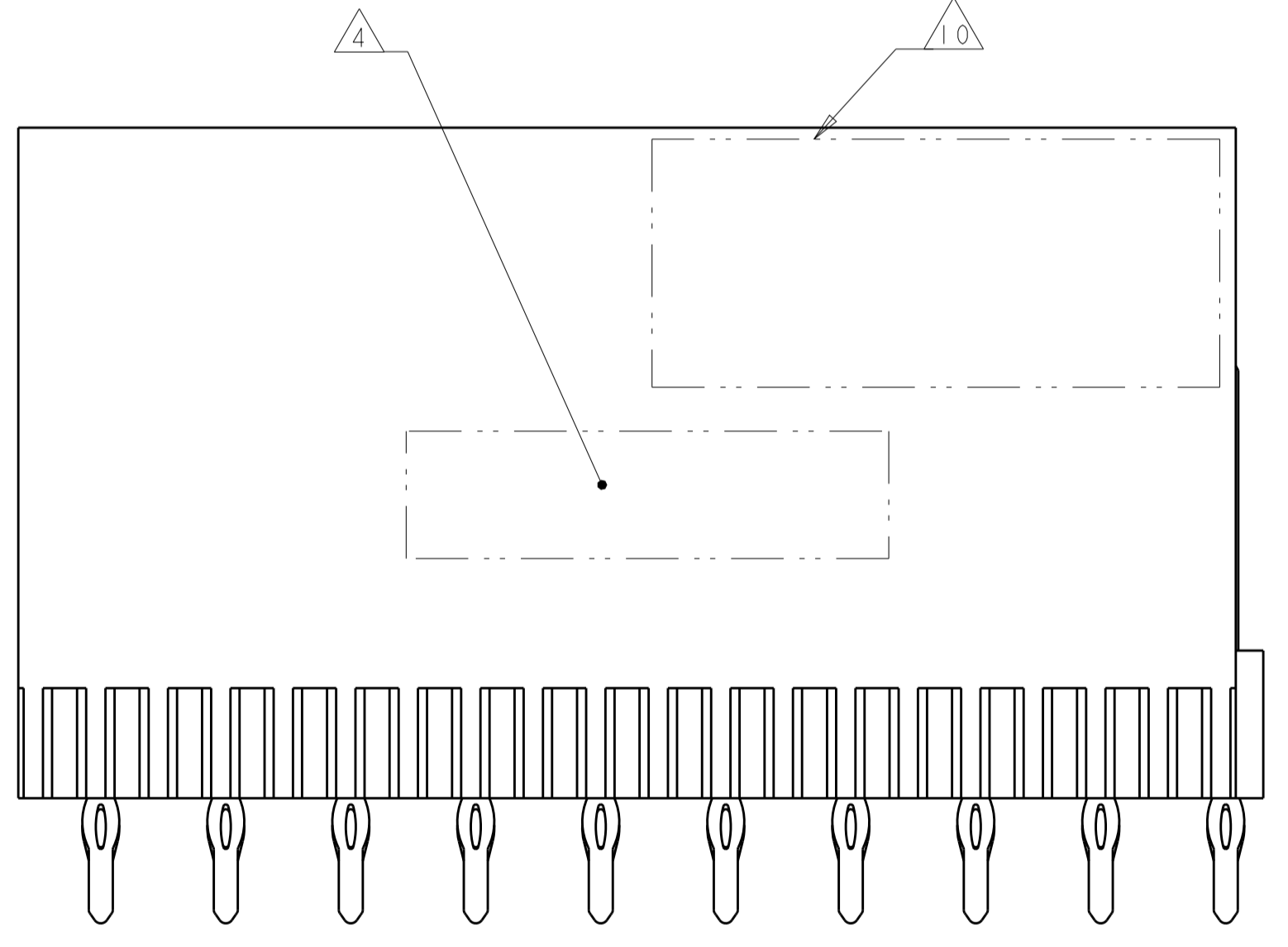
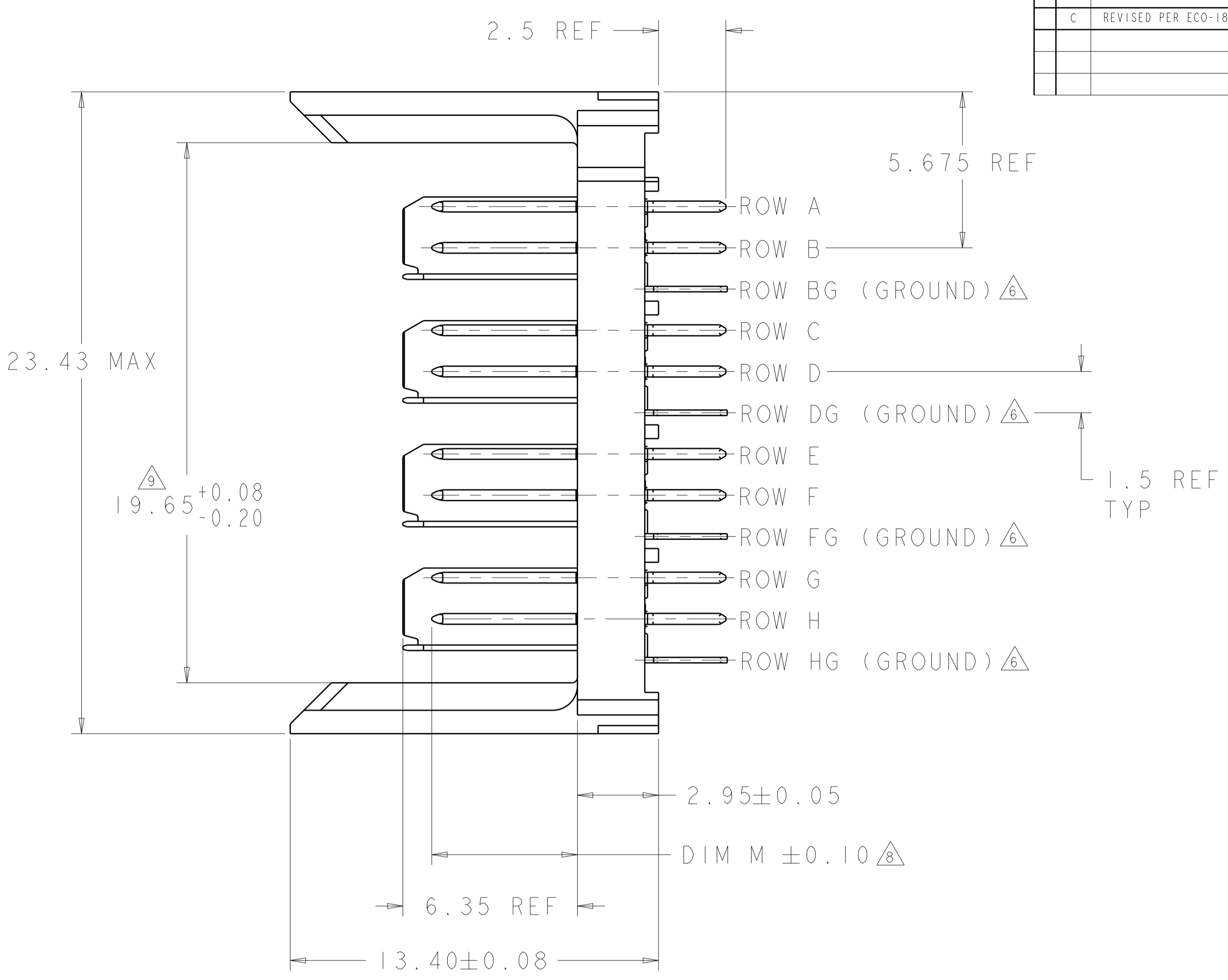
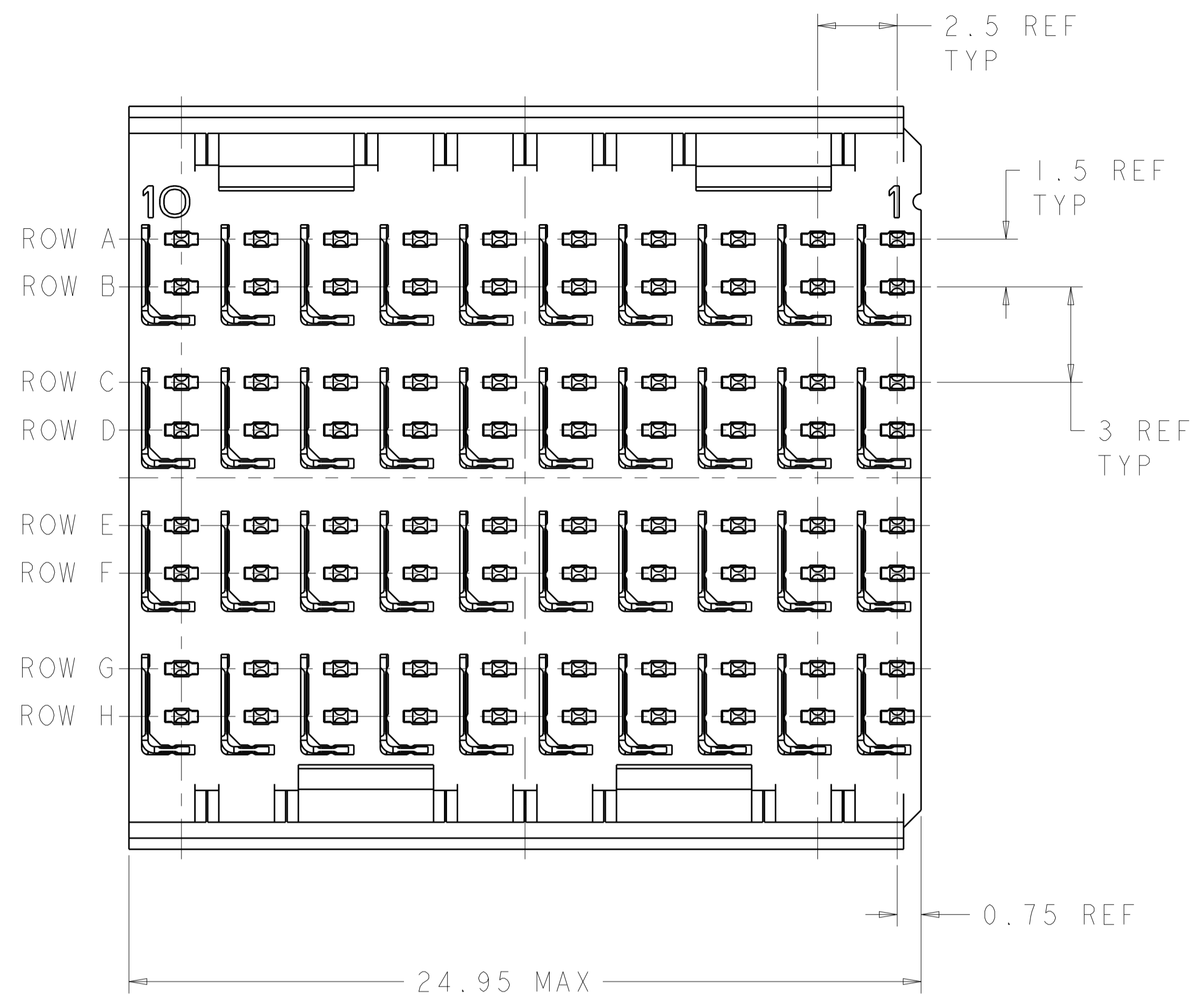


| REVISIONS | | | | |
|-----------|------|---------------------------|-----------|---------|
| P. | LTN. | DESCRIPTION | DATE | APPROV. |
| C | | REVISED PER ECO-18-018129 | 04OCT2019 | AP DS |



⊕ ∅ 0.05 Ⓢ X Y
ALL PLATED THRU HOLES

RECOMMENDED PC BOARD LAYOUT, BACKPLANE, COMPONENT SIDE SHOWN
SCALE 4:1

- △ REFERENCE APPLICATION SPEC 114-13059 FOR RECOMMENDED PLATED THRU HOLE DIAMETER AND PLATING THICKNESSES.
- △ MATERIAL:
CONTACT AND SHIELD - PHOSPHOR BRONZE
HOUSING - GLASS FILLED POLYESTER, UL 94V-0.
- △ FINISH: SIGNAL AND GROUND CONTACTS:
MATING AREA: MEETS THE PERFORMANCE REQUIREMENTS OF PRODUCT SPECIFICATION 108-2055; BASED ON TELCORDIA GR-1217-CORE, APPLICATIONS IN UNCONTROLLED ENVIRONMENTS
COMPLIANT PIN AREA: 0.5 μm MIN MATTE TIN OVER BASE PLATING
- △ CONNECTOR MARKED WITH PART NUMBER AND DATE CODE.
- △ DATUMS AND BASIC DIMENSIONS ESTABLISHED BY CUSTOMER.
- △ THE FOUR GROUNDS IN EACH COLUMN ARE COMMONED.
- 7. CONTACT AREA LUBRICATED WITH BELLCORE APPROVED LUBRICANT. TECHNICAL REFERENCE: GR-1217-CORE, ISSUE 1, NOVEMBER 1995.
- △ REFER TO "CONTACT LAYOUT" CHART FOR SEQUENCING.
- △ DIMENSION APPLIES TO FIRST AND LAST CIRCUITS.
- △ TE OR TE CONNECTIVITY LOGO IS LOCATED.

CONTACT LAYOUT

A = 3.80mm (DIM M)
B = 5.30mm (DIM M)
G = GROUND

| | | COLUMNS | | | | | | | | | |
|------|----|---------|---|---|---|---|---|---|---|---|---|
| | | 10 | 9 | 8 | 7 | 6 | 5 | 4 | 3 | 2 | 1 |
| ROWS | A | B | B | B | B | B | B | B | B | B | B |
| | B | B | B | B | B | B | B | B | B | B | B |
| | BG | G | G | G | G | G | G | G | G | G | G |
| | C | A | B | B | B | B | B | B | B | B | B |
| | D | A | B | B | B | B | B | B | B | B | B |
| | DG | G | G | G | G | G | G | G | G | G | G |
| | E | B | B | B | B | B | B | B | B | B | B |
| | F | B | B | B | B | B | B | B | B | B | B |
| | FG | G | G | G | G | G | G | G | G | G | G |
| G | B | B | B | B | B | B | B | B | B | B | |
| H | B | B | B | B | B | B | B | B | B | B | |
| HG | G | G | G | G | G | G | G | G | G | G | |

6469292-1
PART NUMBER

| | | | |
|---|--|---|---|
| THIS DRAWING IS A CONTROLLED DOCUMENT. | | OWN: S. J. MAGARO 25 JUL 2004 | TE Connectivity |
| DIMENSIONS: mm | | CHK: R. A. PATTERSON 25 JUL 2004 | |
| TOLERANCES UNLESS OTHERWISE SPECIFIED: | | APVD: B. PATTERSON 16 AUG 2007 | NAME: HEADER ASSEMBLY, 4 PAIR, SELECTIVELY LOADED, 2.5mm TAIL, 25mm HMZd SIZE: CAGE CODE DRAWING NO. RESTRICTED TO WEIGHT: A 100779 C=6469292 CUSTOMER DRAWING SCALE: 8:1 SHEET 1 OF 1 REV C |
| 0 PLC ± 1 PLC ± 2 PLC ± 3 PLC ± 4 PLC ± ANGLES ± | | PRODUCT SPEC: APPLICATION SPEC: FINISH: | |