

Power Entry Module with RFI Power Line Filter for General or Medical Applications

L Series



**UL Recognized
CSA Certified
VDE Approved**



L Series

The L series power entry modules are compact units that combine a multi-function power entry module and high performance RFI filtering capabilities. They are available with either a four-voltage selector or a DPST on/off switch. Both variations can be specified with North American or European fusing capabilities and are available in either flange or snap-in mounting.

These filters are UL recognized, CSA certified, and VDE approved. The L series modules offer a choice of filters for general or medical applications.

EDL Models

The RFI filter is for general purpose applications where line-to-line and line-to-ground noise must be controlled. The filter is designed to meet the very low leakage requirements of VDE portable equipment. They are available in three current ratings.

EHL Models

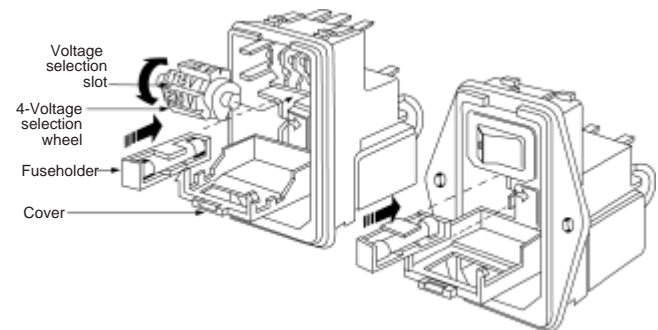
This medical filter provides susceptibility protection without the leakage current associated with line-to-ground capacitors. Designed to allow equipment to meet UL544 for patient care and non-patient care equipment, the EHL filter has a maximum leakage current of 2 μ A at 120 VAC 60 Hz. See Appendix C for more information on medical applications and UL standards.

Note: When using the models with an IEC connector, remember that the leakage current of the companion line cord, GA400, is more significant than that of the filter - which may disqualify this line cord from use in patient care applications.

Voltage Selection

To change selected voltage: disconnect the power cord; open cover using a small blade screwdriver or similar tool; insert the tool into the voltage selection slot and remove wheel from unit; select desired voltage; replace wheel into unit and close cover, *making sure the selected voltage appears in connector window.*

Note: All models have North American or dual European fusing capability and are available in either flange or snap-in mounting.

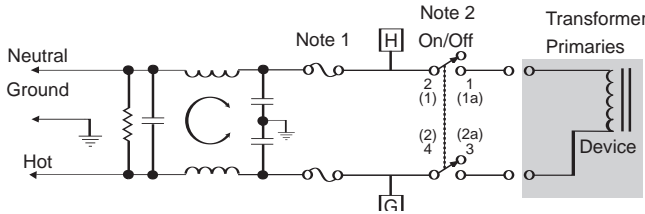


Power Entry Module with RFI Power Line Filter for General or Medical Applications (Continued)

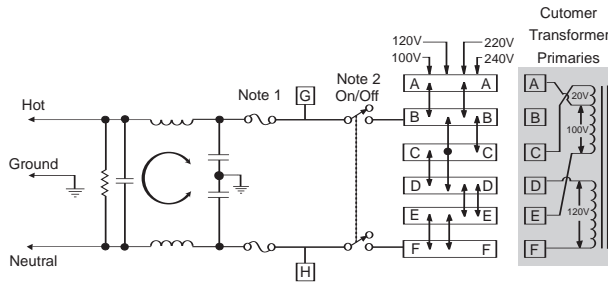
L Series

Electrical Schematics

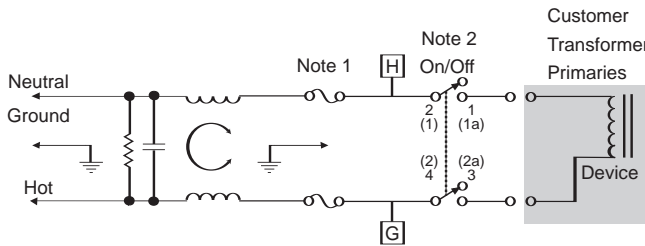
DL Models (with switch)



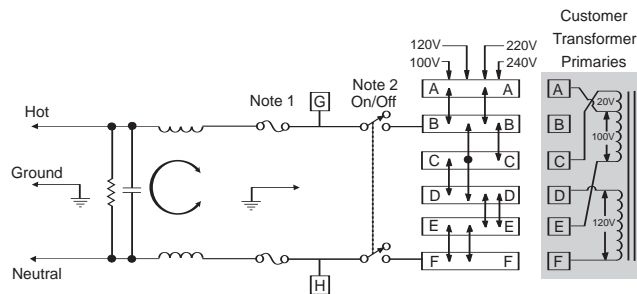
DL Models (with 4-voltage selection)



HL Models (with switch)



HL Models (with 4-voltage selection)



Note 1: Provision for dual European style fusing.
 Note 2: On/Off switch present only with "S" suffix.
 Resistor location for reference only.

Specifications

Maximum leakage current, each line-to-ground:

| | EDL Models | EHL Models |
|-----------------|------------|------------|
| @120 VAC 60 Hz: | 0.25 mA | 2 µA |
| @250 VAC 50 Hz: | 0.50 mA | 5 µA |

Hipot rating (one minute):

| | EDL Models | EHL Models |
|----------------|------------|------------|
| line-to-ground | 1500 | 1500 |
| line-to-line | 1450 | 1450 |

Operating frequency:

50/60 Hz

Operating voltages:

1S & 1SC Suffix (fixed): 250 VAC Max.
 4 & 4C Suffix (selectable): 100, 120, 220, 240 VAC

Rated current:

| | |
|------------------|----|
| 2EDL & 2EHL | 2A |
| 4EDL & 4EHL | 4A |
| 6EL, 6EDL & 6EHL | 6A |

Switch:

Double-insulated, rated for 10,000 operations at full load. 51 Amp inrush capability.

Fuse (not included):

Accepts one .25" x 1.25" fuse or two 5 x 20 mm fuses

Terminals:

110 [2.79] except for switch
 .187 [4.8] for switch

Minimum insertion loss in dB:

Line-to-ground in 50 ohm circuit

| Current Rating | Frequency-MHz | | | | | |
|-------------------|---------------|-----|----|----|----|----|
| | .05 | .15 | 1 | 5 | 10 | 30 |
| EDL Models | | | | | | |
| 2A | 6 | 14 | 24 | 40 | 45 | 50 |
| 4A | 2 | 8 | 18 | 32 | 38 | 45 |
| 6A | 1 | 6 | 17 | 31 | 37 | 45 |
| EHL Models | | | | | | |
| 6A | 3 | 8 | 15 | 18 | 18 | 18 |

Line-to-line in 50 ohm circuit

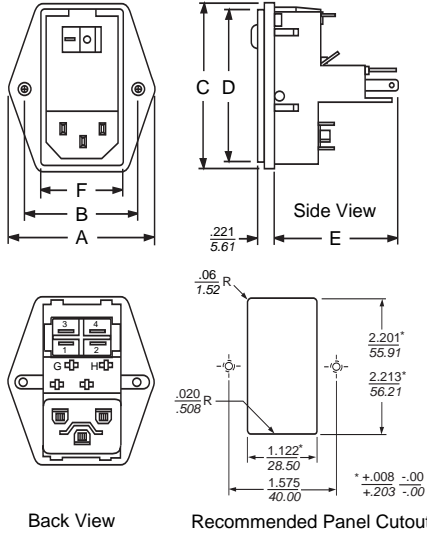
| Current Rating | Frequency-MHz | | | | | | |
|-------------------|---------------|----|----|----|----|----|----|
| | .05 | .5 | 1 | 3 | 5 | 10 | 30 |
| EDL Models | | | | | | | |
| 2A | 7 | 16 | 21 | 23 | 37 | 47 | 50 |
| 4A | 6 | 14 | 18 | 23 | 26 | 45 | 47 |
| 6A | 6 | 15 | 20 | 25 | 24 | 45 | 50 |
| EHL Models | | | | | | | |
| 6A | 4 | 14 | 20 | 28 | 32 | 38 | 42 |

**Power Entry Module with RFI Power Line Filter for General
or Medical Applications (Continued)**

L Series

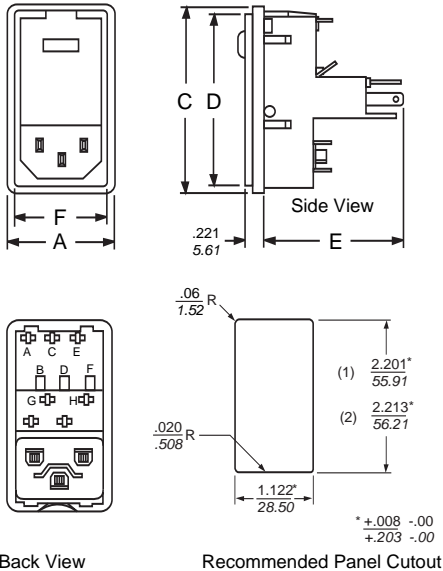
Case Styles — Unfiltered Models

Flange Models



Typical dimensions:
Mounting Holes: .126 [3.20] Dia. (2)
All backplate terminals: .110 [2.79] terminals, except for switch.
Switch terminals are .187 [4.765] Note: Snap-in models allow front mounting only.

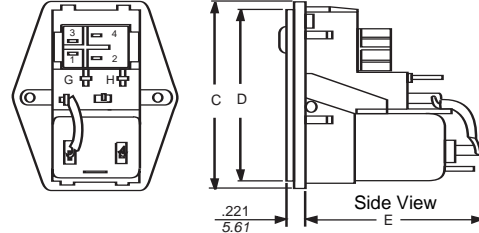
Snap-In Models



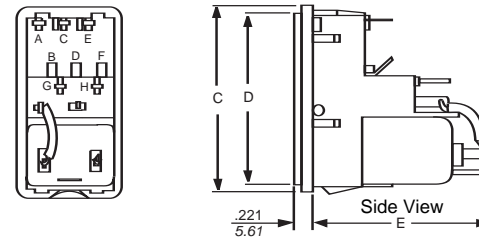
(1) For panel thickness of .031-.079 [0.8-2.0]
(2) For panel thickness of .083-.126 [2.1-3.2]
(3) For snap-in application, the 1.22 [28.5] sides of the cutout must have a .02 [.508] radius on the installation side.
All backplate terminals: .110 [2.79] terminals, except for switch. Switch terminals are .187 [4.75]
Note: Snap-in models allow front mounting only.

Case Styles — Filtered Models

Flange Models



Snap-In Models



Note: Metric fuse models have additional jumper from filter-to-module.

Case Dimensions

| Part No. | A (max) | B <i>±.015</i> <i>±.381</i> | C (max) | D (max) | E (max) | F (max) |
|------------|--------------|-----------------------------------|--------------|--------------|--------------|--------------|
| Flange | 1.98 | 1.575 | 2.3 | 2.14 | 1.66 | 1.11 |
| Unfiltered | <i>50.29</i> | <i>40.0</i> | <i>58.42</i> | <i>54.36</i> | <i>42.16</i> | <i>28.19</i> |
| Snap-in | 1.28 | — | 2.3 | 2.14 | 1.66 | 1.11 |
| Unfiltered | <i>32.51</i> | — | <i>58.42</i> | <i>54.36</i> | <i>42.16</i> | <i>28.19</i> |
| Flange | 1.98 | 1.575 | 2.3 | 2.14 | 2.01 | 1.11 |
| Filtered | <i>50.29</i> | <i>40.0</i> | <i>58.42</i> | <i>54.36</i> | <i>51.05</i> | <i>28.19</i> |
| Snap-in | 1.28 | — | 2.3 | 2.14 | 2.01 | 1.11 |
| Filtered | <i>32.51</i> | — | <i>58.42</i> | <i>54.36</i> | <i>51.05</i> | <i>28.19</i> |

Power Entry Module with RFI Power Line Filter for General
or Medical Applications (Continued)

L Series

UNFILTERED MODELS

| Part Number | Current Rating | Available Voltage Selection Position | DPST On/Off Switch | Mounting Style | Fuseholder Type |
|-------------|----------------|--------------------------------------|--------------------|----------------|-----------------|
| 6EL1S | 6A | 1 | • | Flange | North American |
| 6EL1SC | 6A | 1 | • | Snap-In | North American |
| 6EL1SM | 6A | 1 | • | Flange | Metric |
| 6EL1SCM | 6A | 1 | • | Snap-In | Metric |
| 6EL4 | 6A | 4 | | Flange | North American |
| 6EL4C | 6A | 4 | | Snap-In | North American |
| 6EL4M | 6A | 4 | | Flange | Metric |
| 6EL4CM | 6A | 4 | | Snap-in | Metric |

FILTERED MODELS

| Part Number | Filter Type | Current Rating | Available Voltage Selection Position | DPST On/Off Switch | Mounting Style | Fuseholder Type |
|-------------|-------------|----------------|--------------------------------------|--------------------|----------------|-----------------|
| 2EDL1S | Linear | 2A | 1 | • | Flange | North American |
| 2EDL1SC | Linear | 2A | 1 | • | Snap-In | North American |
| 2EDL1SM | Linear | 2A | 1 | • | Flange | Metric |
| 2EDL1SCM | Linear | 2A | 1 | • | Snap-In | Metric |
| 2EDL4 | Linear | 2A | 4 | | Flange | North American |
| 2EDL4C | Linear | 2A | 4 | | Snap-In | North American |
| 2EDL4M | Linear | 2A | 4 | | Flange | Metric |
| 2EDL4CM | Linear | 2A | 4 | | Snap-in | Metric |
| 4EDL1S | Linear | 4A | 1 | • | Flange | North American |
| 4EDL1SC | Linear | 4A | 1 | • | Snap-in | North American |
| 4EDL1SM | Linear | 4A | 1 | • | Flange | Metric |
| 4EDL1SCM | Linear | 4A | 1 | • | Snap-in | Metric |
| 4EDL4 | Linear | 4A | 4 | | Flange | North American |
| 4EDL4C | Linear | 4A | 4 | | Snap-in | North American |
| 4EDL4M | Linear | 4A | 4 | | Flange | Metric |
| 4EDL4CM | Linear | 4A | 4 | | Snap-in | Metric |
| 6EDL1S | Linear | 6A | 1 | • | Flange | North American |
| 6EDL1SC | Linear | 6 | 1 | • | Flange | North American |
| 6EDL1SM | Linear | 6 | 1 | • | Flange | Metric |
| 6EDL1SCM | Linear | 6 | 1 | • | Snap-in | Metric |
| 6EDL4 | Linear | 6 | 4 | | Flange | North American |
| 6EDL4C | Linear | 6 | 4 | | Snap-in | North American |
| 6EDL4M | Linear | 6 | 4 | | Flange | Metric |
| 6EDL4CM | Linear | 6 | 4 | | Snap-in | Metric |
| 6EHL1S | Medical | 6 | 1 | • | Flange | North American |
| 6EHL1SC | Medical | 6 | 1 | • | Snap-in | North American |
| 6EHL1SM | Medical | 6 | 1 | • | Flange | Metric |
| 6EHL1SCM | Medical | 6 | 1 | • | Snap-in | Metric |
| 6EHL4 | Medical | 6 | 4 | | Flange | North American |
| 6EHL4C | Medical | 6 | 4 | | Snap-in | North American |
| 6EHL4M | Medical | 6 | 4 | | Flange | Metric |
| 6EHL4CM | Medical | 6 | 4 | | Snap-in | Metric |

• Includes DPST switch