

TE Connectivity DEUTSCH

Single Module EN4165 Connectors



HIGH RELIABILITY FOR CABIN INTERCONNECTIONS

The DMC-M has set the modular connector standard in the Aerospace & Military industries since the 1980's, and is now standardized by European Specification EN4165.

The DMC-M Single Module has a rectangular design perfect for both new design customs and retrofit applications thanks to its wide range of contact arrangements from sizes 24 to 8. Each mated half of the DMC-M connector can contain both male and female configuration modules, which allows you to mix input and output with signal and power supply. With a large number of insert layout possibilities, there are also many different keying possibilities between plugs and receptacles and a real EMI protection following most stringent Aerospace and Military specifications. Compliance with the most demanding avionic specifications in terms of sealing, vibrations, fire, smoke and toxicity compliance or mechanical endurance increases the reliability of the cabin interconnections. Designed with a lightweight composite material and metal plating, the Single Module DMC-M is ideal for weight and mass saving.

APPLICATIONS

- Cabin and avionic systems
- High-performance military aircraft
- Commercial airlines
- Communications equipment
- Missiles
- Military
- Railway
- Medical

FEATURES

- Light weight composite
- Modularity
- Color and mechanical coded
- Push-pull coupling
- Aluminum cable contact compliant

MATERIALS AND FINISHES

Housing	Composite
Plating	Nickel
Inserts	Thermoplastic and FSR
Contacts	Copper alloy with gold on nickel plating

ELECTRICAL DATA

Insulation Resistance	≥ 5000 MΩ
Maximum Current	Size 22 - 5 A Size 20 - 7.5 A Size 16 - 13 A Size 12 - 23 A Size 8 - 46 A

EMI Shielding Performance

FREQUENCY (MHz)	ATTENUATION (dB)
100	50
200	45
300	45
400	40
800	35
1000	30

MECHANICAL DATA

Temperature Range	-55°C to +175°C
Vibrations	20 g
Shock	100g
Durability	500 mating cycles
Salt Spray	500 hours
Interfacial Sealing	1.1 x 10 ⁻² bar

MECHANICAL DATA (CONT.)

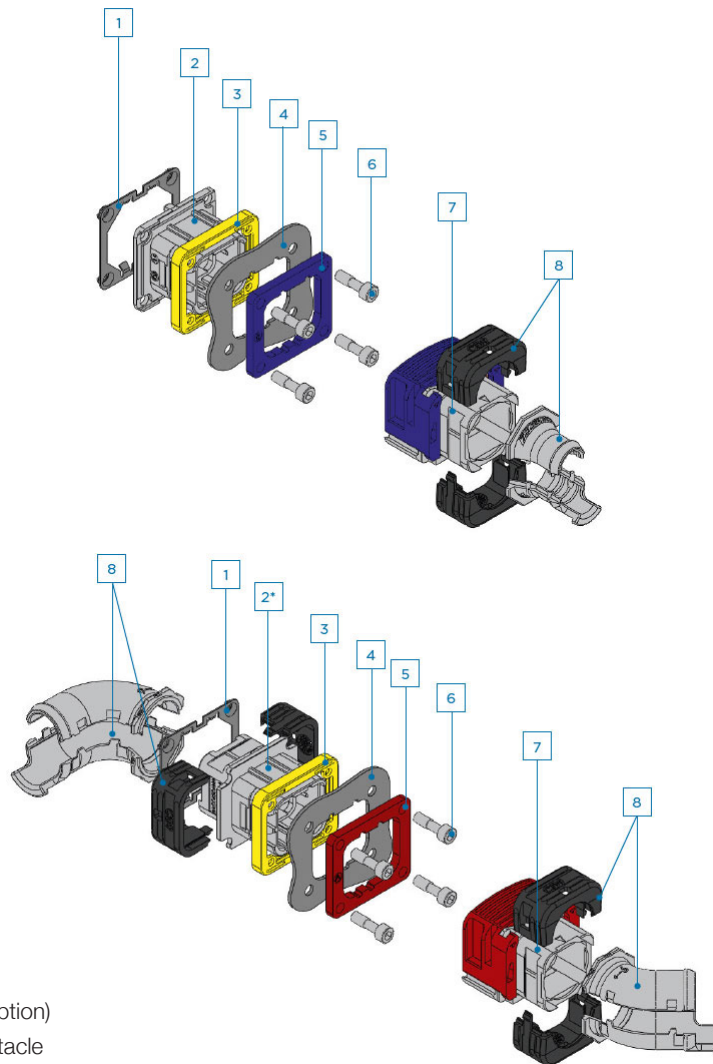
Weight

EXTENDER RECEPTACLE	SHORT RECEPTACLE	PLUG	BACKSHELL
7 gr	6 gr	9 gr	4 - 7 gr
0.015 lbs	0.013 lbs	0.020 lbs	0.009 - 0.015 lbs

Recommended Mounting
for Receptacle Screw Torque

0.5 ± 0.1 N.m or 4.4 ± 0.9 In.LbF
When using TE DEUTSCH integrated nut plate
Ref. 787-0016-00 (see Accessories).

EXPLODED VIEW



- 1 - Nut plate (option)
- 2 - Short receptacle
- 2* - Extender receptacle
- 3 - Sealing gasket (option)
- 4 - Panel (up to 2 mm thick)
- 5 - Color coding plate (option)
- 6 - Screws (ordered separately)
- 7 - Plug
- 8 - Backshell

HOW TO ORDER SINGLE MODULE EN4165 - COMMERCIAL

	1	2	3*	4*	5*
DMC-MD	24	D	-K	-S	-T
CONNECTOR TYPE	SHELL TYPE	SHELL KEYING	CODING PLATE	SEALING GASKET	NUT PLATE

*Note: Steps 3,4 and 5 are only for receptacles.

STEP 1: CHOOSE SHELL TYPE

20
Plug

24
Short Receptacle

26
Extender Receptacle

STEP 2: CHOOSE SHELL KEYING

N - A - B - C - D - E - F - G

STEP 3: CHOOSE CODING PLATE*

OMIT
Without

K
With

STEP 4: CHOOSE SEALING GASKET*

OMIT
Without

S
With

STEP 5: CHOOSE NUT PLATE*

OMIT
Without

T
With

Example: DMC-MD 24 A-K-S-T

	1	2	3	4	5	6*	7*	8*
EN4165	M	0	1	A	D	1	G	1
NUMBER OF THE BASIC STANDARD	FINISH	SHELL TYPE	SHELL TYPE	SERIES	SHELL KEYING	CODING PLATE	SEALING GASKET	NUT PLATE

Note: Steps 6, 7, and 8 are only for receptacles.

STEP 1: CHOOSE FINISH

M
Composite Nickel Plated

STEP 2: CHOOSE SHELL TYPE

6
Plug

0
Short Receptacle

7
Extender Receptacle

STEP 3: CHOOSE SHELL TYPE

1
Monomodule

STEP 4: CHOOSE SERIES

A
Series 2

STEP 5: CHOOSE SHELL KEYING

N - A - B - C - D - E - F - G

STEP 6: CHOOSE CODING PLATE*

0
Without

1
With

STEP 7: CHOOSE SEALING GASKET*

U
Without

G
With

STEP 8: CHOOSE NUT PLATE*

0
Without

1
With

HOW TO ORDER SINGLE MODULE EN4165 - ACCESSORIES (COMMERCIAL)

787	-8055	1 -20	2 M
CONNECTOR TYPE		ACCESSORIES TYPE	PLATING

STEP 1: CHOOSE ACCESSORIES TYPE

<p>10 Straight Chimney</p> <p>20 45° Indexable Chimney</p>	<p>11 Clampshell</p> <p>21 45° Indexable Chimney Tie Wrap</p>	<p>12 Straight Tie Wrap Ø 7mm</p> <p>30 90° Indexable Chimney</p>	<p>13 Straight Tie Wrap Ø 10mm</p> <p>31 90° Indexable Chimney Tie Wrap</p>
--	---	---	---

STEP 2: CHOOSE PLATING

M
Nickel

HOW TO ORDER SINGLE MODULE EN4165 - ACCESSORIES

EN4165	-026	1 M	2 20 A
NUMBER OF THE BASIC STANDARD	CHAPTER	FINISH	ACCESSORIES TYPE

STEP 1: CHOOSE FINISH

M
Composite Nickel Plated

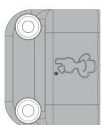
STEP 2: CHOOSE ACCESSORIES TYPE

<p>10 Straight Chimney</p> <p>10 A Straight Tie Wrap Ø 10mm</p>	<p>20 45° Indexable Chimney</p> <p>20 A 45° Indexable Chimney Tie Wrap</p>	<p>30 90° Indexable Chimney</p> <p>30 A 90° Indexable Chimney Tie Wrap</p>
---	--	--

BACKSHELLS & PLUGS

Backshells

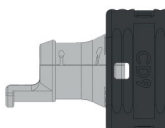
Straight Clampshell
787-8055-11M
Screws Delivered



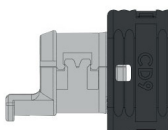
Straight Chimney
787-8055-10M
EN4165-026M10



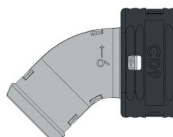
Straight Chimney
Tie Wrap Ø 7mm
787-8055-12M



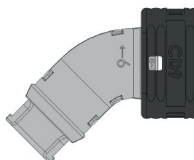
Straight Chimney
Tie Wrap Ø 10mm
787-8055-13M
EN4165-026M10A



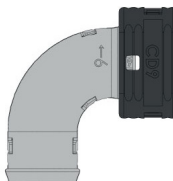
45° Indexable Chimney
787-8055-20M
EN4165-026M20



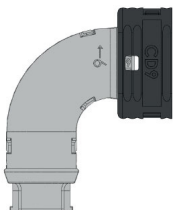
45° Indexable Chimney
Tie Wrap
787-8055-21M
EN4165-026M20A



90° Indexable Chimney
787-8055-30M
EN4165-026M30



90° Indexable Chimney
Tie Wrap
787-8055-31M
EN4165-026M30A



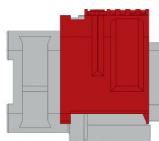
Mates with



Plugs



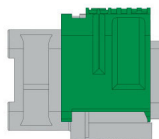
DMC-MD 20 N
BACC65BUMN
EN4165M61AN



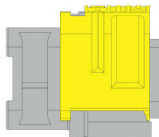
DMC-MD 20 A
BACC65BUMA
EN4165M61AA



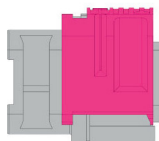
DMC-MD 20 B
BACC65BUMB
EN4165M61AB



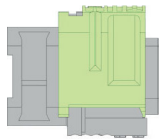
DMC-MD 20 C
BACC65BUMC
EN4165M61AC



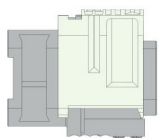
DMC-MD 20 D
BACC65BUMD
EN4165M61AD



DMC-MD 20 E
EN4165M61AE



DMC-MD 20 F
EN4165M61AF



DMC-MD 20 G
EN4165M61AG

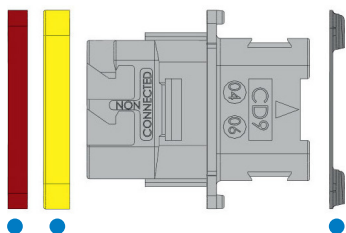
TE/DEUTSCH Part Numbers (DMC-M / 787)
BOEING Part Numbers (BACC)
STANDARD Part Numbers (EN4165)

BACKSHELLS & RECEPTACLES

RECEPTACLES

Extender Receptacle

DMC-MD 26 *X
 BACC65CAM*X
 EN4165M71A*X



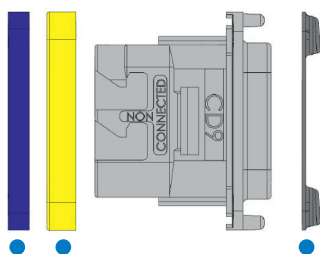
● = To be ordered separately (no BACC65 references)

SHELL KEYING

*X							
N	A	B	C	D	E	F	G

Short Receptacle

DMC-MD 24 *X
 BACC65BVM*X
 EN4165M01A*X

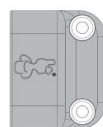


● = To be ordered separately (no BACC65 references)

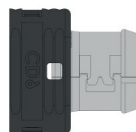
NOTE: No accessory can be fixed on this receptacle.

Mates with
 ↔

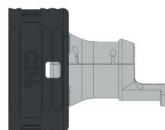
BACKSHELLS



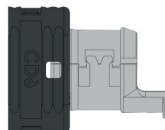
Straight Clampshell
 787-8055-11M
 Screws Delivered



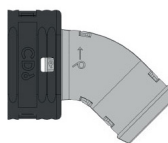
Straight Chimney
 787-8055-10M
 EN4165-026M10



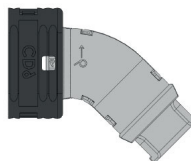
Straight Chimney
 Tie Wrap Ø 7mm
 787-8055-12M



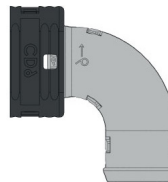
Straight Chimney
 Tie Wrap Ø 10mm
 787-8055-13M
 EN4165-026M10A



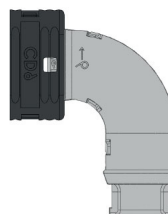
45° Indexable Chimney
 787-8055-20M
 EN4165-026M20



45° Indexable Chimney
 Tie Wrap
 787-8055-21M
 EN4165-026M20A



90° Indexable Chimney
 787-8055-30M
 EN4165-026M30





















90° Indexable Chimney
 Tie Wrap
 787-8055-31M
 EN4165-026M30A

TE/DEUTSCH Part Numbers (DMC-M / 787)
 BOEING Part Numbers (BACC)
 STANDARD Part Numbers (EN4165)

MODULES

PIN CONTACTS PER AS39029/58 AND EN3155


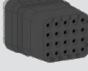















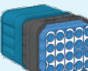
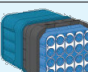
MODULES	DETAILS	PART NUMBER CROSS
	20 contacts size 22	DMC-M 20-22 AN BAC10BC2022PNB EN4165A20-221NA
	20 contacts size 22	DMC-MA 20-22 AN EN4165A20A221NA
	12 contacts size 20	DMC-M 12-20 AN BAC10BC1220PNB EN4165A12-201NA
	8 contacts size 16	DMC-M 08-16 AN BAC10BC0816PNB EN4165A08-161NA
	4 contacts size 12	DMC-M 04-12 AN EN4165A04-121NA
	1 contact size 8	DMC-M 01-08 AN EN4165A01-081NA
	6 contacts size 16 2 contacts size 22 8 contacts size 24	DMC-M 16-02 AN 2226454-1
	6 contacts size 16 5 contacts size 22	DMC-M 99-01 AN BAC10BC1622PNB EN4165A99-011NA
	6 contacts size 16 5 contacts size 22	DMC-MA 99-01 AN EN4165A99A011NA
	8 contacts size 22 3 contacts size 20	DMC-M 99-02 AN
	8 contacts size 20 8 contacts size 24	DMC-M 99-03 AN
	6 contacts size 20 2 contacts size 22 8 contacts size 24	DMC-M 99-04 AN
	8 contacts size 22 2 contacts size 12	DMC-M 99-06 AN BAC10BC1001PNB
	8 contacts size 20 2 contacts size 16	DMC-M 99-10 AN EN4165A99-101NA
	6 optical contacts	DMC-M MC5 AN
	2 optical contacts 5 contacts size 16 2 contacts size 22	DMC-M T47 AN
	12 or 24 optical contacts for round or ribbon cable	Hermaphrodite DMC-M MC6
	Blanking module	DMC-M 00-00 PN EN4165-1N

Aluminum Cable Technology

High Speed Modules

Distribution Shunt Modules

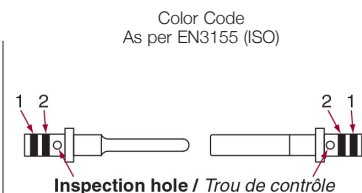
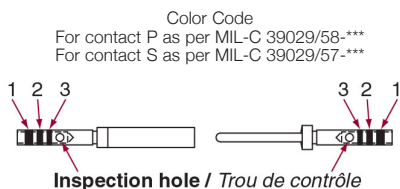
SOCKET CONTACTS PER AS39029/57 AND EN3155

MODULES	DETAILS	PART NUMBER CROSS
	20 contacts size 22	DMC-M 20-22 BN BAC10BC2022SNB EN4165 20-22 A1NB
	20 contacts size 22	DMC-MA 20-22 BN EN4165A20A221NB
	12 contacts size 20	DMC-M 12-20 BN BAC10BC1220SNB EN4165A12-201NB
	8 contacts size 16	DMC-M 08-16 BN BAC10BC0816SNB EN4165A08-161NB
	4 contacts size 12	DMC-M 04-12 BN EN4165A04-121NB
	1 contact size 8	DMC-M 01-08 BN EN4165A01-081NB
	6 contacts size 16 2 contacts size 22 8 contacts size 24	DMC-M 16-02 BN 2226455-1
	6 contacts size 16 5 contacts size 22	DMC-M 99-01 BN BAC10BC1622SNB EN4165A99-011NB
	6 contacts size 16 5 contacts size 22	DMC-MA 99-01 BN EN4165A99A011NB
	8 contacts size 22 3 contacts size 20	DMC-M 99-02 BN
	8 contacts size 20 8 contacts size 24	DMC-M 99-03 BN
	6 contacts size 20 2 contacts size 22 8 contacts size 24	DMC-M 99-04 BN
	8 contacts size 22 2 contacts size 12	DMC-M 99-06 BN BAC10BC1001SNB
	8 contacts size 20 2 contacts size 16	DMC-M 99-10 BN EN4165A99-101NB
	6 optical contacts	DMC-M MC5 BN
	2 optical contacts 5 contacts size 16 2 contacts size 22	DMC-M T47 BN
	20 contacts size 22 5 shunts 4 ways	DMC-M 22-05 BN EN4165A20Y221NB
	20 contacts size 22 3 shunts 4 ways 4 shunts 2 ways	DMC-M 22-07 BN EN4165A2AY221NB
	20 contacts size 22 10 shunts 2 ways	DMC-M 22-10 BN EN4165A2BY221NB

Note: 1) DMC-M modules are compatible with Aluminum Cable contacts and with EN3155-70 / 71 size 22. 2) Distribution shunt modules use dedicated contacts based on standard M39029. 3) DMC-M 99-02, 99-03, 99-04, 16-02 are specific modules for high speed Ethernet application.

TE/DEUTSCH Part Numbers (DMC-M / 787)
BOEING Part Numbers (BAC10)
STANDARD Part Numbers (EN4165)

CONTACTS



CONTACTS								CABLES	
PART NUMBER DEUTSCH	TYPE	SIZE	COLOR CODES AS PER MIL			COLOR CODES AS PER EN3155		Ø OVER INSULATION IN/MM (GAUGE AWG)	WIRE SECTION IN/ MM²
			1	2	3	1	2		
724-0001-22	P	22/22	Orange	Blue	Black	-	-	0.71 to 1.37 (22 - 26)	0.095 to 0.40
724-0003-22	S		Orange	Green	Yellow	-	-		
182-0860-22	P	22/20	-	-	-	Red	Green	0.71 to 1.37 (22 - 26)	0.095 to 0.40
182-0862-22	S		-	-	-				
724-0001-20	P	20/20	Orange	Blue	Orange	-	-	0.85 to 2.11 (20 - 24)	0.25 to 0.60
724-0003-20	S		Orange	Green	Violet	-	-		
724-1063-20	P	20/18	-	-	-	Red	Brown	(18 - 24)	0.25 to 1.00
724-1064-20	S		-	-	-				
724-0001-16	P	16/16	Orange	Blue	Yellow	-	-	1.20 to 2.77 (16 - 20)	0.60 to 1.20
724-0003-16	S		Orange	Green	Gray	-	-		
724-1063-16	P	16/14	-	-	-	Blue	White	(14 - 20)	0.60 to 2.00
724-1064-16	S		-	-	-				
724-0001-12	P	12/12	Orange	Blue	Green	-	-	1.90 to 3.61 (12 - 14)	2.00 to 3.00
724-0003-12	S		Orange	Green	White	-	-		
724-1063-12	P	12/10	-	-	-	Yellow	White	1.90 to 2.90 (14 - 10)	2.00 to 5.00
724-1064-12	S		-	-	-				
724-0001-08	P	Power 8	-	-	-	-	-	3.80 to 5.15 (8)	5.30 to 8.98
724-0003-08	S		-	-	-	-	-		
182-0001-08	P	Power 8	-	-	-	-	-	3.80 to 5.15 (8)	5.30 to 8.98
182-0003-08	S		-	-	-	-	-		
724-0004-16	P	Micro-Coax 16	Yellow	Red	Yellow	-	-	KX 22	0.057 to 0.158
724-0005-16	S		Yellow	Orange	Red	-	-		
182-0125-08	P	8	-	-	-	-	-	ALPEN A 26 DT	-
182-0126-08	S		-	-	-	-	-		
182-0048-08	P	8	-	-	-	-	-	Interface SMA	-
182-0044-08	S		-	-	-	-	-		
724-1272-22	S	Shunt 22	-	-	-	-	-	0.71 to 1.37 (22 - 26)	0.095 to 0.40

DATABUS CONTACTS

DATABUS CONTACTS (TWISTED PAIR) AS PER MIL-C 38999 SERIES I, III AND IV STANDARD						
CONTACTS				CABLES		
PART NUMBER	TYPE	SIZE	COLOR CODE	TYPES	CONDUCT. MAX. SECTION	BRAID Ø MAX.
182-0034-03	P	8	Brown-Red	Braid Simple	2 x 0.34 mm²	3.48
182-0035-03	S					
182-0034-04	P	8	Red-Red	High Immunity Double Braid	2 x 0.34 mm²	3.91
182-0035-04	S					

Part numbers in red - Standard contacts delivered with modules

Note: Contacts for aluminium cable, contact us.

CONTACTS AND TOOLING



CONTACTS	TOOLING				
	CRIMPING TOOL P/N DEUTSCH	CRIMPING TOOL P/N MIL	LOCATOR P/N DEUTSCH	LOCATOR P/N MIL	INSERTION AND EXTRACTION TOOL
724-0001-22	057-0463-12	M22520/2-01	057-0467-32	M22520/2-09	M81969/14-01
724-0003-22			057-0515-32	M22520/2-06	
182-0860-22	057-0463-12	M22520/2-01	057-0467-32	M22520/2-09	M81969/14-01
182-0862-22					
724-0001-20	057-0461-11	M22520/1-01	057-0466-21	M22520/1-04	M15570-20
724-0003-20					
724-1063-20	057-0461-11	M22520/1-01	056-0466-21	M22520/1-04	-
724-1064-20					
724-0001-16	057-0461-11	M22520/1-01	057-0466-21	M22520/1-04	M15570-16
724-0003-16					
724-1063-16	057-0461-11	M22520/1-01	056-0466-21	M22520/1-04	-
724-1064-16					
724-0001-12	057-0461-11	M22520/1-01	057-0466-21	M22520/1-04	M15570-12
724-0003-12					
724-1063-12	057-0461-11	-	056-0466-21	M22520/1-04	-
724-1064-12					
724-0001-08	057-0064-05 A	-	057-0065-05 A	-	114-008 or M81969/14-06
724-0003-08					
182-0001-08	057-0064-05 A	-	057-0065-05 A	-	114-008 or M81969/14-06
182-0003-08					
724-0004-16	057-0463-12*	-	057-0539-32*	-	M15570-16
724-0005-16	057-0509-14**		057-0511-34**		
182-0125-08	-	-	-	-	-
182-0126-08	-	-	-	-	-
182-0048-08	-	-	-	-	-
182-0044-08	-	-	-	-	-
724-1272-22	057-0463-12	M22520/2-01	057-0467-32	M22520/2-09	M81969/14-01

Part numbers in red - Standard contacts delivered with modules

*For central contact **For exterior contact

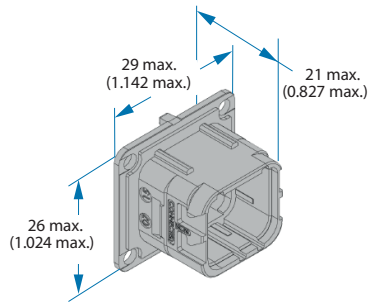
DATABUS CONTACTS

DATABUS CONTACTS (TWISTED PAIR) AS PER MIL-C 38999 SERIES I, III AND IV STANDARD			
SLEEVE TYPE	CRIMPING TOOL CENTRAL CONDUCTOR	CRIMPING TOOL FERRULE	INSERTION AND EXTRACTION TOOL
Thermoplastic and silicone	TDB-CY-08	TDB-CT-HEX Mark C	114-008 or M81969/14-06
Thermoplastic and silicone	TDB-CT-08	TDB-CT-HEX Mark D	114-008 or M81969/14-06

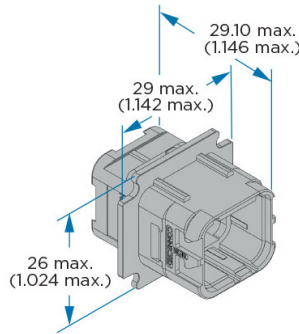
DIMENSIONS

RECEPTACLES & PLUG

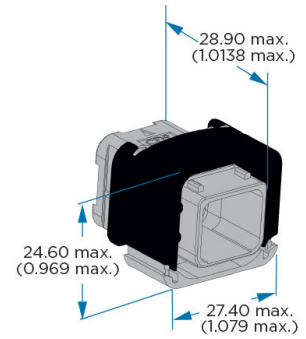
RECEPTACLE



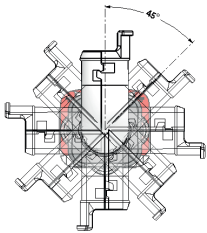
EXTENDER RECEPTACLE



PLUG



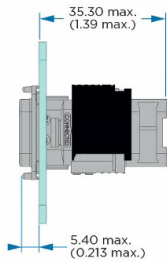
BACKSHELL / CHIMNEY INDEXATION



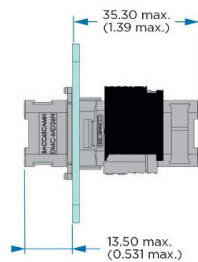
All backshells can be indexed in eight positions on the rear of plug and extender receptacle shell. This gives maximum flexibility during design and cable installation and reduces the number of variants and components.

MOUNTING PANEL DETAILS

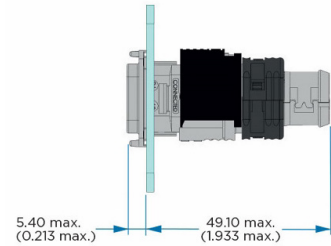
BOX MOUNTING RECEPTACLE



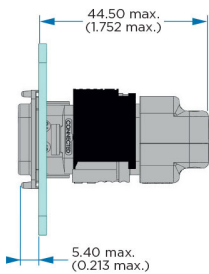
EXTENDER RECEPTACLE



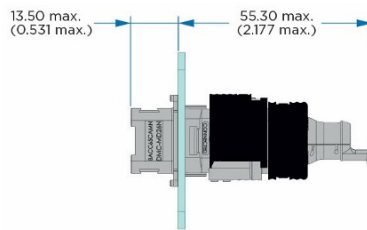
STRAIGHT CHIMNEY



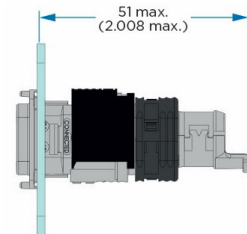
STRAIGHT CLAMPSHELL



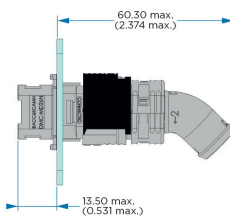
STRAIGHT CHIMNEY TIE WRAP



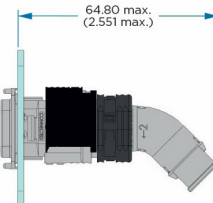
UNIVERSAL UNSHIELDED ACCESSORY



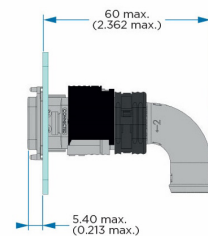
45° INDEXABLE CHIMNEY



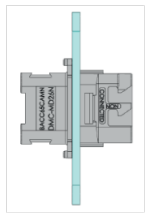
45° INDEXABLE CHIMNEY TIE WRAP



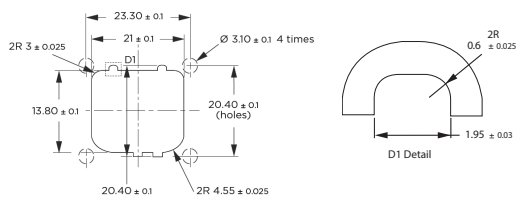
90° INDEXABLE CHIMNEY



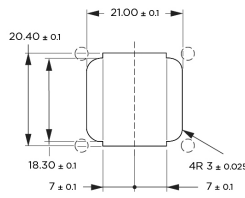
PANEL CUTOUT



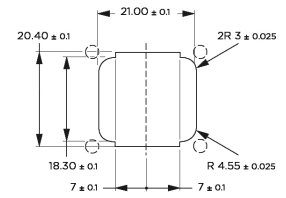
GENERIC DIMENSIONS



FREE

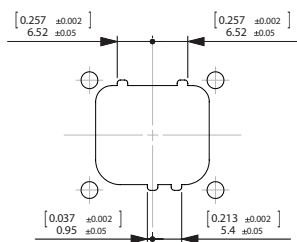


ORIENTATION

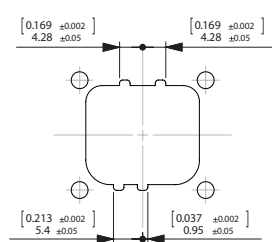


Note: Dimensions are in millimeters. Each hole Ø 3.1 mm must receive a screw (screw type 4-40) Recommended panel thickness: 0.8 mm min. - 2 mm max.

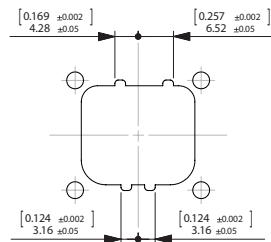
PANEL CODING KEYING



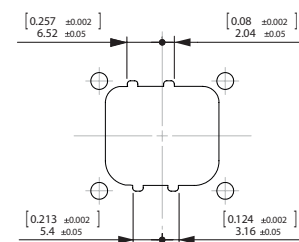
CODING N



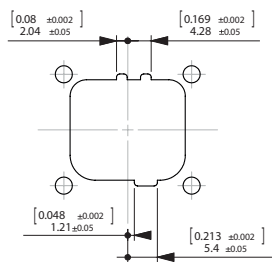
CODING A



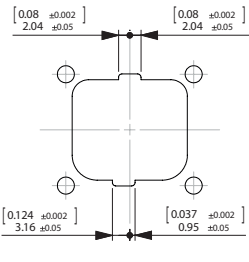
CODING B



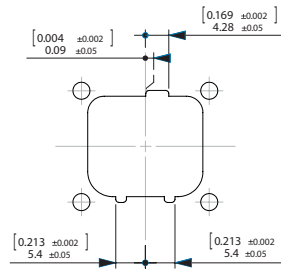
CODING C



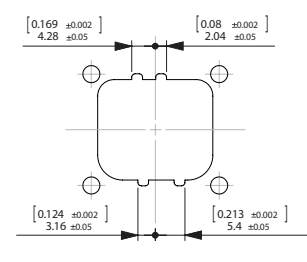
CODING D



CODING E

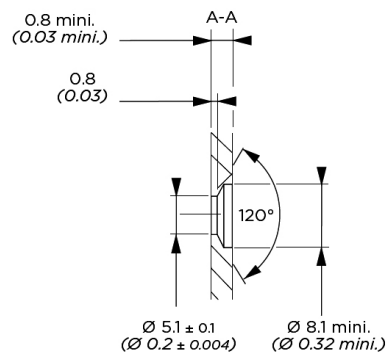
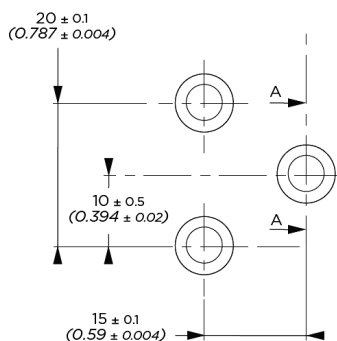


CODING F



CODING G

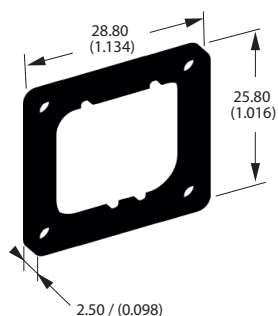
PANEL MOUNTING BRACKET CUTOUT



Overall dimensions and characteristics are given for indication guidance only. TE DEUTSCH reserves the right to modify them for production improvement reasons.

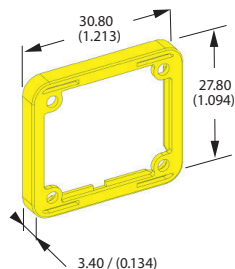
OPTIONAL PARTS FOR RECEPTACLE

KEYING PLATE



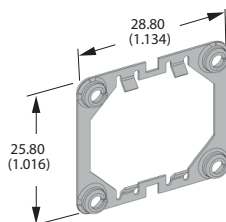
- | | |
|-----------------|-------------|
| N - 787-0015-00 | EN4165-25CN |
| A - 787-0015-01 | EN4165-25CA |
| B - 787-0015-02 | EN4165-25CB |
| C - 787-0015-03 | EN4165-25CC |
| D - 787-0015-04 | EN4165-25CD |
| E - 787-0015-05 | EN4165-25CE |
| F - 787-0015-06 | EN4165-25CF |
| G - 787-0015-07 | EN4165-25CG |

SEALING GASKET



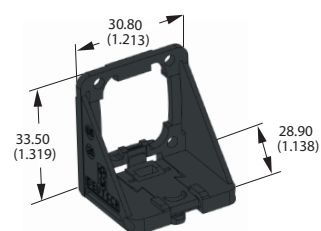
787-0011-00
EN4165-25E

NUT PLATE



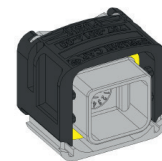
787-0016-00
EN4165-25D

PANEL MOUNTING BRACKET



787-8014-00

PROTECTIVE CAPS



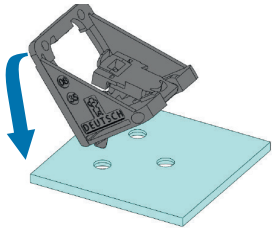
PROTECTION LEVEL	PLUG CAP	RECEPTACLE CAP	RECEPTACLE AND EXTENDER CAP	PLUG FLIGHT CAP	RECEPTACLE AND EXTENDER FLIGHT CAP
	104-0236-00	104-0235-00	WITH LANYARD 787-8011-00 WITHOUT LANYARD 787-8009-00	787-8010-00	WITH LANYARD 787-8017-00; EN4165M3C WITHOUT LANYARD 787-8016-00
Shipping	x	x	-	-	-
Dust	x	x	x	x	x
EMI	-	-	x	x	x
Low Pressure Sealing	-	-	-	x	x



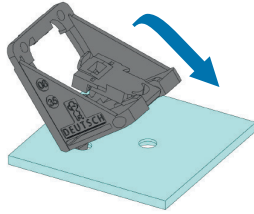
Lanyard
787-8013-00

TE DEUTSCH Part Numbers (DMC-M / 787)

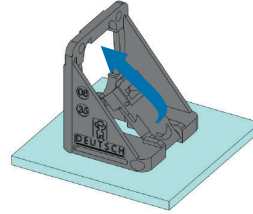
MOUNTING BRACKETS



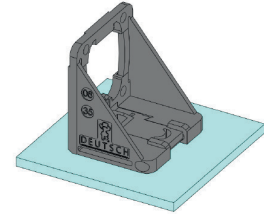
STEP 1: Locate mating parts



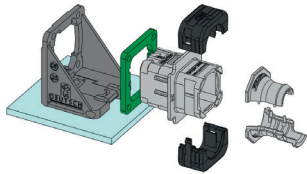
STEP 2: Install rear dowels



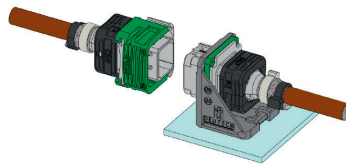
STEP 3: Fix and snap in position



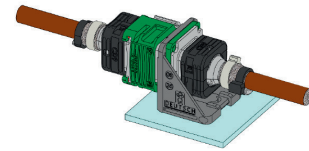
STEP 4: Installed.



STEP 5: Align receptacle with bracket



STEP 6: Install and fix in position



STEP 7: Assembled

CONTACT CRIMPING



STEP 1: Use a crimping tool with the appropriate locator.



STEP 2: Strip the insulation* 5 mm maximum.



STEP 3: Insert the contact in the crimping tool.



STEP 4: Insert the wire in the contact.



STEP 5: Tighten the crimping tool.



STEP 6: Inspect the contact. It must have 8 indents, and the wire must be seen in the contact inspection hole.

*For aluminum wire, contact us.

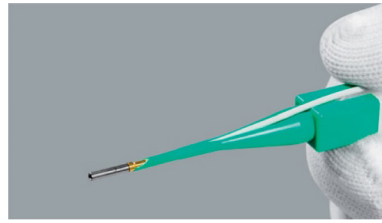
Note: For the use of a shielded version, do not forget to slide the cables in the chimney before crimping the contacts.

CONTACT INSERTION / EXTRACTION

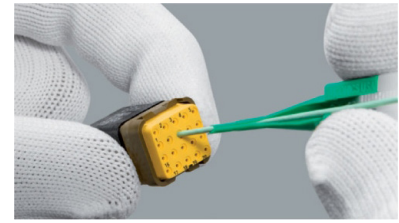


STEP 1: Use the appropriate plastic tool. There is one tool for each contact size.

TOOLS PART NUMBERS	CONTACTS SIZE
M81969/14-01	22
M15570-20	20
M15570-16	16
M15570-12	12
114-008 or M81969/14-06	8



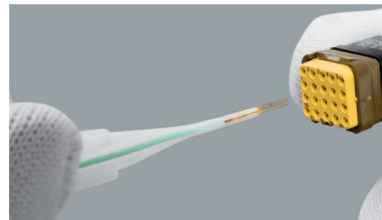
STEP 2: Insert the wire in the slot of the colored side of tool. Pull the wire until the contact butts against the tool.



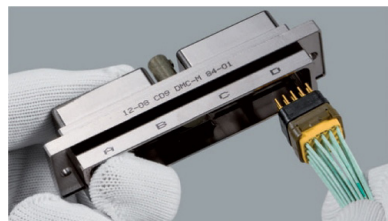
STEP 3: Insert the contact in the corresponding module cavity. Push the contact fully home. Then remove the tool and lightly pull the wire back to make sure that the contact is well inserted.



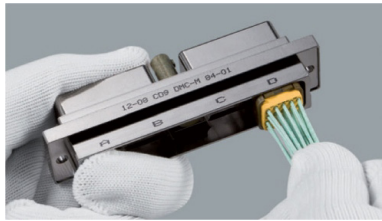
STEP 4: For extraction, insert the wire in the slot of the white side of the tool. Slide the tool into the cavity and push fully home until it is butted against the contact shoulder.



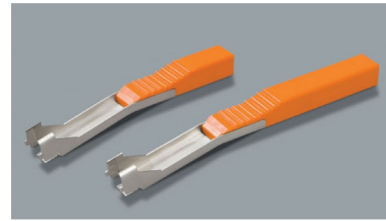
STEP 5: Press the wire between the fingers and the tool. Then pull the overall wire and tool back.

MODULE INSERTION / EXTRACTION (NOTE: 4-WAY MODULE SHOWN)

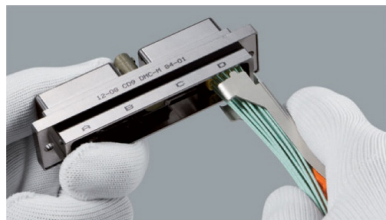
STEP 1: The module must be inserted from the rear side of the housing. The module polarization key must be visible from the marked side of the housing.



STEP 2: Push manually the module (wired or not) until butting. For sealed modules use the insertion tool part number 057-0699-00 A or B. Make sure that the module is well inserted either by pulling back the wires (if wired) or by pushing the module from the front of the housing.



STEP 3: For extraction use the tool part number 057-0289-00 A or B.



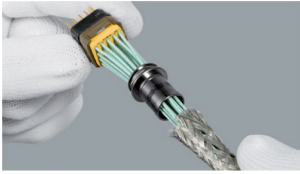
STEP 4: Slide the tool around the cable. Then push the tool inside the housing until butting.



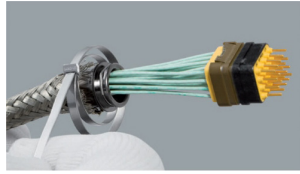
STEP 5: Note the different tool's position depending on the A, B, C or D cavities.



STEP 6: Press the cable between the tool and the fingers and pull the overall back. If the module is not wired, use the same tool, but push the module from the front of the housing.

SHIELDED BRAID MOUNT ON CHIMNEY (NOTE: 4-WAY MODULE SHOWN)

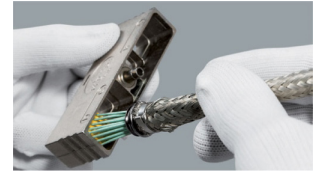
STEP 1: Slide the chimney and the shielded braid around the cable.



STEP 2: Slide the shielded braid and the 3 mm “band it” ring over the chimney.



STEP 3: Use the tool part number 057-0450-00 to tighten the ring around the shielded braid over the chimney.



STEP 4: Clip the module in the housing.