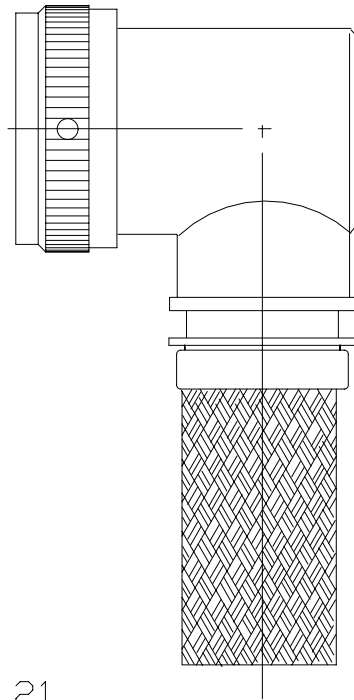


REVISIONS			
LTR	DESCRIPTION	DATE	APPROVED
H	REVISED PER ECN AD93081		



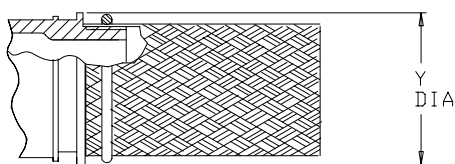
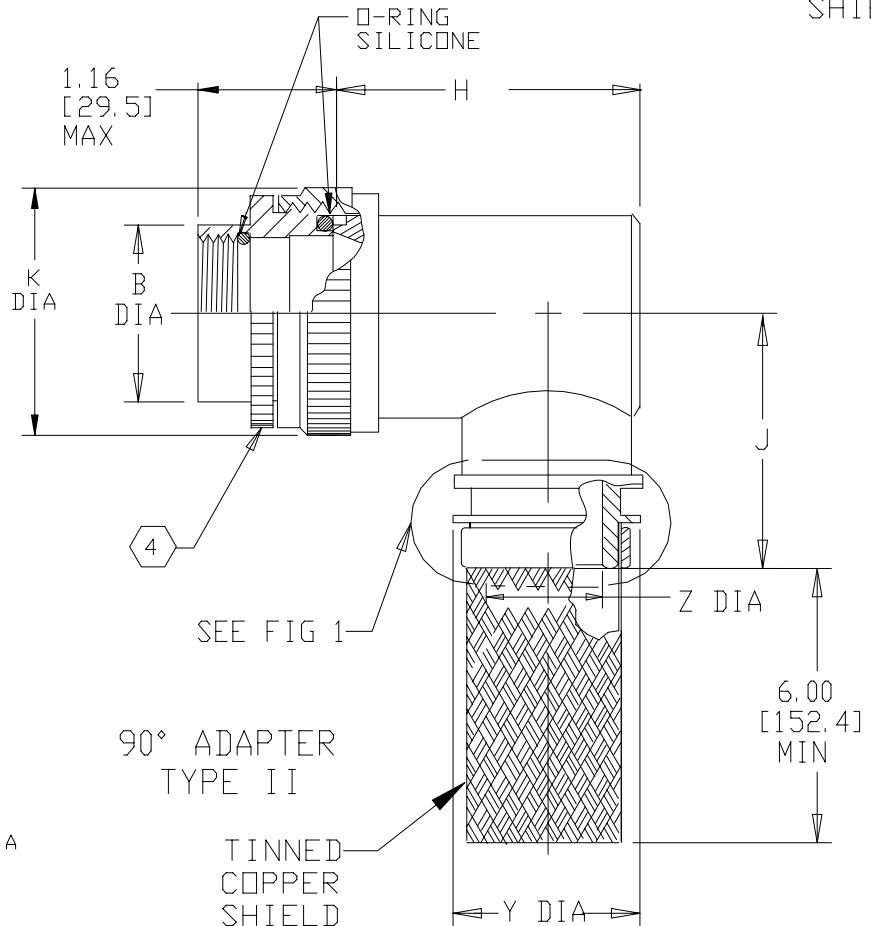
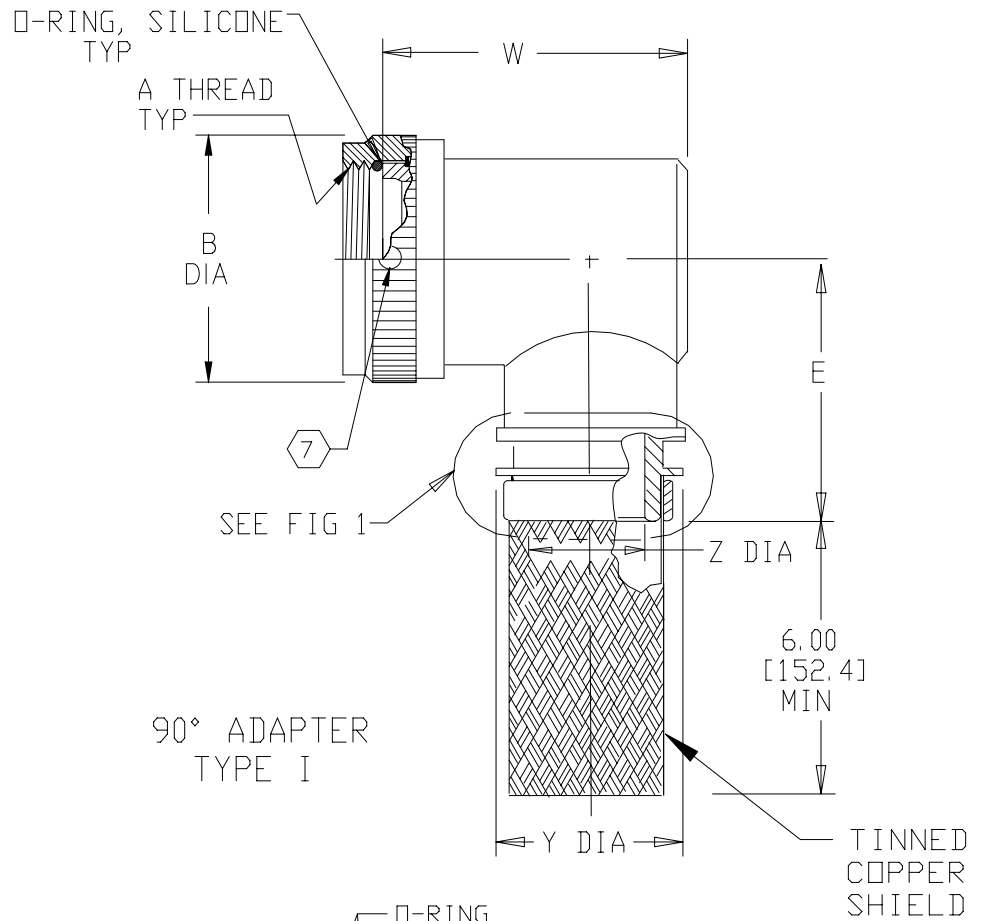
CODE 21,
SHIELDED 90° ADAPTER

- NOTES:
- THIS PRODUCT IS DESIGNED TO TERMINATE A HEAT SHRINKABLE LIPPED BOOT TO A CONNECTOR.
 - FOR ADDITIONAL DIMENSIONS, ORDERING INFORMATION AND MODIFICATIONS, SEE CH00-0250-004.
 - ADAPTER TO BE PERMANENTLY MARKED WITH CODE IDENT. NO. AND PART NO. (E.G.: 06090-206M212-19B08).
 - FOR LARGER ENTRY SIZES, A 2 PIECE ADAPTER (TYPE II) IS SUPPLIED.
 - BRAID TERMINATION RING MAY BE SUPPLIED AS TINEL-LOCK SHAPE MEMORY RING AT MANUFACTURER'S OPTION.
 - ADAPTER MATES TO MIL-C-26482, SERIES I, MS3110, MS3111, MS3116 CLASS E & F CONNECTORS.
 - ANTI-ROTATIONAL SET SCREW, THREE THREADED HOLES $120^\circ \pm 5^\circ$ APART, SINGLE MATING SET SCREW SUPPLIED: AN565DC4H2. NOT REQUIRED FOR TYPE II ADAPTERS.

If this document is printed it becomes uncontrolled.
Check for the latest revision.

SPECIFICATION CONTROL DRAWING

UNLESS OTHERWISE SPECIFIED DIMENSIONS ARE IN INCHES. METRIC DIMENSIONS ARE IN BRACKETS. DECIMALS .XXX ± — [mm] .XX ± — [mm] .X ± — [mm] ANGLES .X ± —	DRAWN E. GOLDY	DATE 05-25-93		Tyco Electronics Corporation 300 Constitution Drive Menlo Park, CA. 94025 U.S.A.		
	CHECKED	DATE				
	APPROVED	DATE	TITLE ADAPTER, SHIELD 90° CODE 21			
	APPROVED	DATE				
CAD NAME \ACAD12\206M2XX			SIZE A	CODE IDENT. NO. 06090	DWG. NO. 206M2XX	REV K
THIRD ANGLE PROJECTION			DO NOT SCALE THIS DWG		SHEET 1 OF 3	



TINEL-LOCK TERMINATION

FIG 1 5

If this document is printed it becomes uncontrolled.
Check for the latest revision.

SIZE	CODE IDENT. NO.	DWG. NO.	REV
A	06090	206M2XX	K
DO NOT SCALE THIS DWG		CAD NAME \ACAD12\206M2X-2	SHEET 2 OF 3

TABLE I

BASE PART NO.	SHELL SIZE ⑥	MAX ENTRY SIZE TYPE I ④	A THREAD CLASS 2B	B DIA MAX	E MAX
206M208	8	04	.438-28 UNEF	.72 [18.3]	1.14 [29.0]
206M210	10	06	.562-24 UNEF	.85 [21.6]	1.20 [30.5]
206M212	12	08	.688-24 UNEF	.98 [24.9]	1.27 [32.3]
206M214	14	10	.812-20 UNEF	1.11 [28.2]	1.32 [33.5]
206M216	16	12	.938-20 UNEF	1.23 [31.2]	1.37 [34.8]
206M218	18	13	1.062-18 UNEF	1.35 [34.3]	1.43 [36.3]
206M220	20	15	1.188-18 UNEF	1.48 [37.6]	1.50 [38.1]
206M222	22	16	1.312-18 UNEF	1.60 [40.6]	1.56 [39.6]
206M224	24	18	1.438-18 UNEF	1.70 [43.2]	1.61 [40.9]

TABLE II

ENTRY SIZE	K MAX	Z ±.020 [±0.51]	Y DIA MIN	J MAX	W MAX	H MAX
03	NA	.187 [4.75]	.393 [9.98]	NA	1.22 [31.0]	NA
04	NA	.250 [6.35]	.456 [11.58]	NA	1.22 [31.0]	NA
05	.80 [20.3]	.312 [7.92]	.515 [13.08]	1.16 [29.5]	1.29 [32.8]	1.19 [30.2]
06	.80 [20.3]	.375 [9.53]	.581 [14.76]	1.16 [29.5]	1.35 [34.3]	1.19 [30.2]
07	.92 [23.4]	.438 [11.13]	.643 [16.33]	1.22 [31.0]	1.41 [35.8]	1.38 [35.1]
08	.92 [23.4]	.500 [12.70]	.705 [17.91]	1.22 [31.0]	1.47 [37.3]	1.38 [35.1]
09	1.18 [30.0]	.562 [14.27]	.705 [17.91]	1.35 [34.3]	1.60 [40.6]	1.51 [38.4]
10	1.18 [30.0]	.625 [15.88]	.831 [21.11]	1.35 [34.3]	1.60 [40.6]	1.51 [38.4]
11	1.18 [30.0]	.688 [17.48]	.893 [22.68]	1.40 [35.6]	1.72 [43.7]	1.63 [41.4]
12	1.35 [34.3]	.750 [19.05]	.953 [24.21]	1.40 [35.6]	1.72 [43.7]	1.63 [41.4]
13	1.41 [35.8]	.812 [20.62]	.953 [24.21]	1.46 [37.1]	1.85 [47.0]	1.78 [45.2]
14	1.41 [35.8]	.875 [22.23]	1.081 [27.46]	1.46 [37.1]	1.85 [47.0]	1.78 [45.2]
15	1.60 [40.6]	.938 [23.83]	1.143 [29.03]	1.53 [38.9]	1.97 [50.0]	1.88 [47.8]
16	1.60 [40.6]	1.000 [25.40]	1.205 [30.61]	1.53 [38.9]	1.97 [50.0]	1.88 [47.8]
18	1.66 [42.2]	1.125 [28.58]	1.381 [35.08]	1.59 [40.4]	2.10 [53.3]	2.01 [51.1]
20	2.04 [51.8]	1.250 [31.75]	1.506 [38.25]	1.78 [45.2]	2.22 [56.4]	2.13 [54.1]
22	2.23 [56.6]	1.375 [34.93]	1.631 [41.43]	1.85 [47.0]	2.40 [62.0]	2.29 [58.2]
24	2.23 [56.6]	1.500 [38.10]	1.756 [44.60]	1.92 [48.8]	2.58 [65.5]	2.42 [61.5]
28	2.48 [63.0]	1.750 [44.45]	2.004 [50.90]	2.17 [55.1]	2.80 [71.1]	2.67 [67.8]

If this document is printed it becomes uncontrolled.
Check for the latest revision.

SIZE A	CODE IDENT. NO. 06090	DWG. NO. 206M2XX	REV K
DO NOT SCALE THIS DWG		CAD NAME \ACAD12\206M2X-3	SHEET 3 OF 3