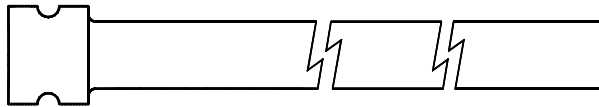


REVISIONS			
LTR	DESCRIPTION	DATE	APPROVED
A	REVISED PER DCR NO: R030035	JAN 23, 03	KJW



CRES-LOCK BANDING STRAP - STRAIGHT

NOTES:

1. THE BAND IS CONSTRUCTED FROM 300 SERIES PASSIVATED STAINLESS STEEL AND IS DESIGNED TO BE INSTALLED WITH EITHER A HAND OR ELECTRIC BANDING TOOL. CONTACT TYCO ELECTRONICS/RAYCHEM FOR FURTHER INFORMATION.
2. THE BAND WILL BE PERMANENTLY MARKED WITH RAYCHEM NAME, CODE IDENTIFICATION NUMBER AND BASIC PART NUMBER. (e.g. RAYCHEM-06090-BND-1225).

**If this document is printed it becomes uncontrolled.  
Check for the latest revision.**

OBSOLETE  
SPECIFICATION CONTROL DRAWING  
**tyco**/Electronics **Raychem**  
NOT the LATEST REVISION

UNLESS OTHERWISE SPECIFIED  
DIMENSIONS ARE IN INCHES.  
METRIC DIMENSIONS ARE  
IN BRACKETS.

DECIMALS  
.X ± --- [ mm]  
.XX ± --- [ mm]  
.XXX ± --- [ mm]

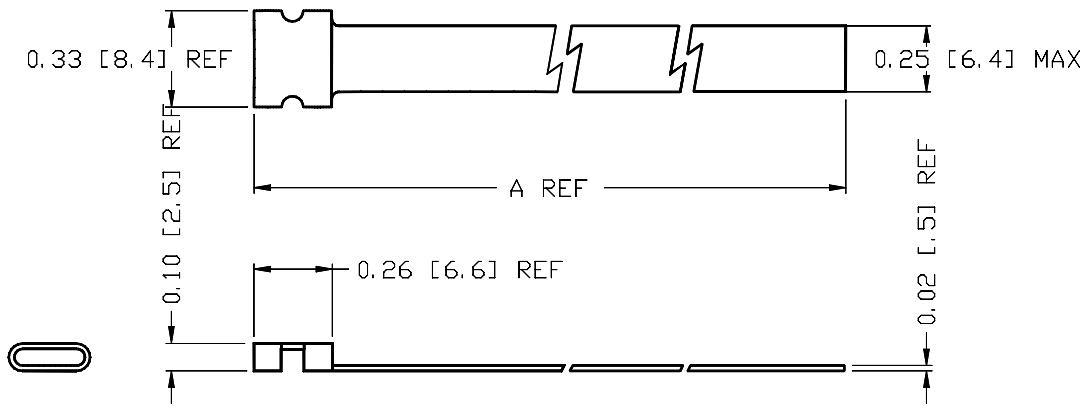
ANGLES  
.X ± ---

DRAWN IRT	DATE JUN 02
CHECKED KJW	DATE JUN 02
APPROVED KJW	DATE JUN 02
APPROVED IM	DATE JUN 02
CAD NAME R030035A	
THIRD ANGLE PROJECTION	

TITLE CRES-LOCK BANDING STRAP - STRAIGHT			
SIZE A4	CODE IDENT. NO. 06090	DWG. NO. BND-1225S	REV A
DO NOT SCALE THIS DWG		SHEET 1 OF 2	

CRES-LOCK BANDING STRAP - STRAIGHT

STRAIGHT/FLAT - STANDARD SUPPLY



PART NUMBER	ENTRY SIZES	A REF ±0.06 [±1.5]
BND-1225S	03 TO 24	12.00 [305.0]

**If this document is printed it becomes uncontrolled.  
Check for the latest revision.**

SIZE	CODE IDENT. NO.	DWG. NO.	REV
A4	06090	BND-1225S	A
DO NOT SCALE THIS DWG			CADE FILE: R030035B SHEET 2 OF 2