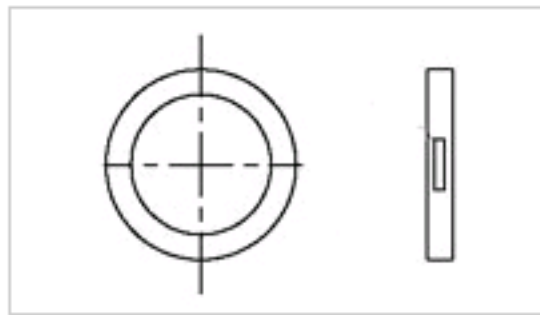


TR14BI-TINEL-LOCK-RING Product Details

[Share](#) | [Print](#) | [Email](#)


✓ Active

Braid, Fixed, Spin and Tinel Lock Adapters

TR14BI-TINEL-LOCK-RING

TR14BI-TINEL-LOCK-RING

TE Internal Number: 234245-000

Product Highlights [View All](#)

- Applies To Cable
- Style = Tinel Ring
- All
- Entry Size = 14
- Boot Diameter = 29.84 mm

- [Pricing & Availability](#)
- [Request Sample](#)
- [Add to My Part List](#)
- [Buy Product through Distributor](#)

Feedback

[Documents](#) | [Features](#) | [Compliance](#)

Please Note:
Use the Product Drawing for all design activity

Product Type Features	
Style ?	Tinel Ring
Angle ?	All
Color	Gray
Dimensions	
Boot Diameter (mm [in]) ?	29.84 [1.175]
Cable Diameter Range (mm [in])	11.00 - 21.40 [0.430 - 0.840]
Body Features	
Entry Size	14

Configuration Features	
Braid ?	Double 36 AWG Braid
Industry Standards	
RoHS/ELV Compliance ?	RoHS compliant, ELV compliant
Lead Free Solder Processes ?	Not relevant for lead free process
RoHS/ELV Compliance History	Always was RoHS compliant
Conditions for Usage	
Applies To	Cable
Other	
Brand	Raychem
Comment	For specific shell size information, refer to "Hardware" or Catalog.

Related Products

Not quite the product you're looking for?
[Find Similar Products](#)

[View Part in Product Feature Selector](#)

[Check for Tooling](#)

- Corporate Information**
- [About TE](#)
 - [Investors](#)
 - [News Room](#)
 - [Supplier Portal](#)
 - [Careers](#)
 - [Terms & Conditions](#)
 - [Privacy Policy](#)
 - [Global Accessibility Statement](#)

- Quick Links**
- [Distributor Inventory](#)
 - [Product Cross Reference](#)
 - [Documents & Drawings](#)
 - [Product Compliance Support Center](#)
 - [Site Map](#)

- Customer Support**
- [Email or Chat With Us](#)
 - [Find a Phone Number](#)
 - [Knowledge Base](#)
 - [Manage Your Account](#)

Keep Me Informed