

Tolerance of Cutting Tilt

TECHNICAL CHARACTERISTICS

MATERIAL
 INSULATOR MATERIAL: PET (WHITE)
 SUPPORT TAPE: PET (BLUE)
 CONTACT MATERIAL: COPPER
 CONTACT PLATING: TIN
 QUALITY CLASS: 20 MATING CYCLES MIN.
 PITCH: 0.50 MM

ENVIRONMENTAL
 OPERATING TEMPERATURE: -30°C UP TO 105°C
 HEAT RESISTANCE: 85°C x 95 HRS
 FLAMMABILITY RATING UL SUB.758
 MOISTURE RESISTANCE: 40°C, 95% RH x 96 HRS
 COMPLIANCE: LEAD FREE AND ROHS

ELECTRICAL
 CURRENT RATING: 0.5A MAX
 WORKING VOLTAGE: 60V
 INSULATION RESISTANCE: > 1000 MOHM/M (500 VDC)
 DIELECTRIC STRENGTH: 500 VAC/MN NO BREAKDOWN
 CONDUCTOR RESISTANCE: < 0.33 OHM/M
 CONTACT RESISTANCE: < 20 mA

MECHANICAL
 ELONGATION OF INSULATOR: > 60 TIMES
 TENSIL STRENGTH OF INSULATION: > 3.5KG/MM²
 FLEXING TEST: 180° > 20 TIMES
 ABRASION: > 10000 TIMES
 PULL/OUT: > 20 TIMES

PACKAGING
 BAG

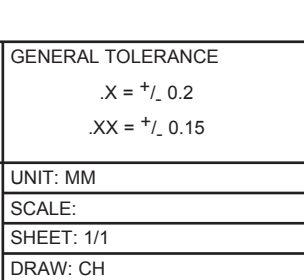
DIMENSION & TOLERANCE
 W = (N+1) x P
 Pt = (N-1) x P

ABBR.	P	L	M	Ct	Cw	S1	S2	D1	D2
VALUE	0.50	200	0.5	0.035	0.3	4.0	4.0	8.0	8.0
TOLER.	±0.005	±3	±0.08	±0.01	±0.02	±1.0	±1.0	±2.0	±2.0

RoHS Compliant			
G			
F			
E			
D	31-MAR-09	TYPE 2	CH
C	19-MAR-09	Ct DIMENSION	CH
B	11-NOV-08	CW DIMENSION	CH
A	11-DEC-07	PDF	EC
REV	DATE	FILE	BY

PROJECTION:	
APPROVAL: RJ	

GENERAL TOLERANCE	
.X = +/- 0.2	
.XX = +/- 0.15	
UNIT: MM	DESCRIPTION: 0.5MM FLAT FLEXIBLE CABLE TYPE 2 L=200MM
SCALE:	
SHEET: 1/1	
DRAW: CH	WERI PART NO: 6877 xx 200 002



DESCRIPTION: 0.5MM FLAT FLEXIBLE CABLE TYPE 2 L=200MM		SIZE A4
WERI PART NO: 6877 xx 200 002		