

**DESIGNED AND DIMENSIONED IN MILLIMETERS [INCHES]  
ALL DIMENSIONS REFERENCE EXCEPT AS SHOWN**

DO NOT  
SCALE FROM  
THIS PRINT

AMF6-XX-X-RA-XR

No OF PAIRS (TOTAL)  
-01, -02

TAPE & REEL (SEE NOTES 1 & 2)  
-TR: TAPE & REEL  
-FR: FULL REEL QTY TAPE & REEL

PLATING SPECIFICATION  
-S: 30µ" SELECTIVE GOLD IN CONTACT  
AREA, MATTE TIN ON TAIL

ROW SPECIFICATION  
-RA: RIGHT ANGLE

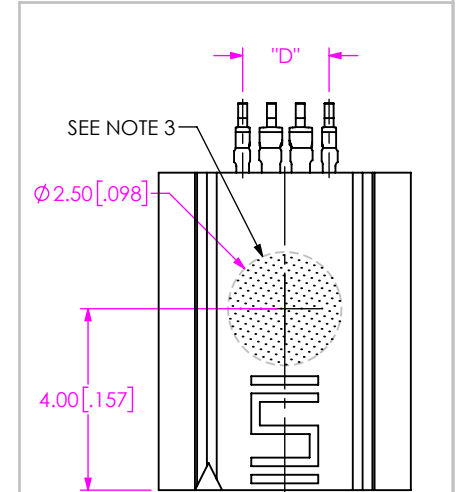
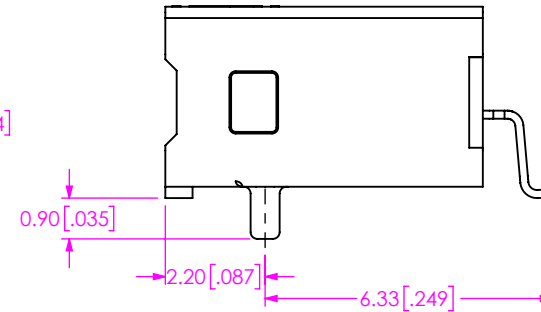
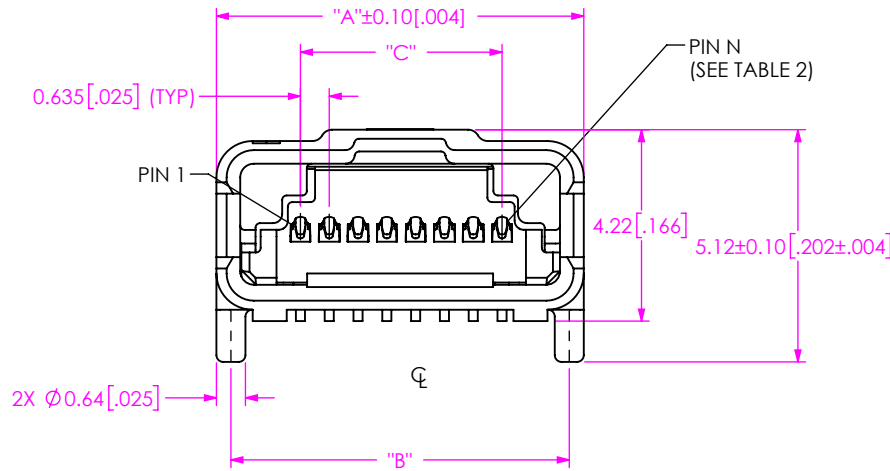
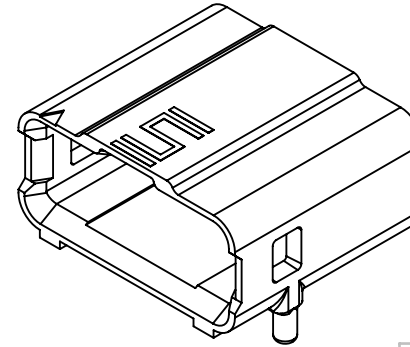
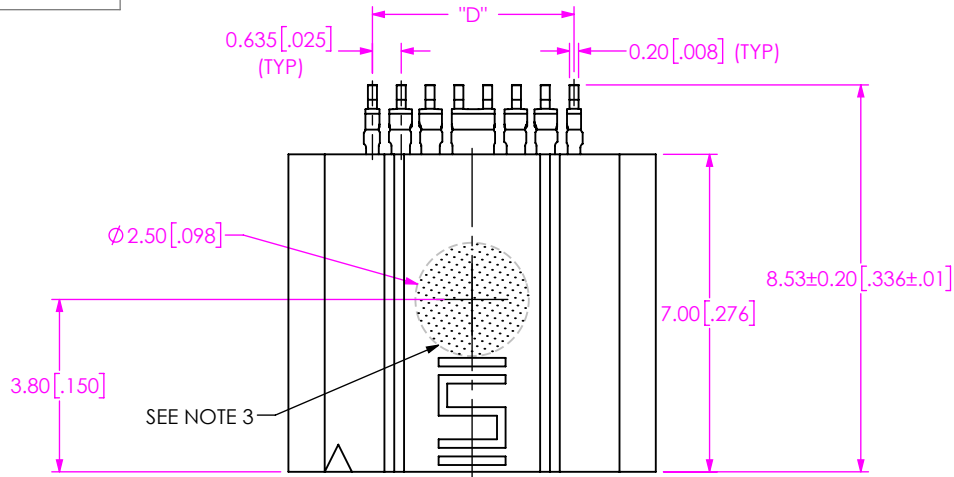


FIG 1  
(AMF6-02-S-RA-XR SHOWN)

FIG 2  
(AMF6-01-S-RA-XR SHOWN)  
SAME AS FIG 1 EXCEPT WHERE SHOWN

TABLE 2	
No OF PAIRS	N
-01	4
-02	8

TABLE 1				
No OF PAIRS	"A"	"B"	"C"	"D"
-01	5.56 [0.219]	4.92 [0.194]	1.91 [0.075]	1.91 [0.075]
-02	8.10 [0.319]	7.46 [0.294]	4.45 [0.175]	4.45 [0.175]

- NOTES:  
1. ORDERS WILL BE PACKAGED ACCORDING TO THE SAMTEC PACKAGING EFFICIENCY STANDARDS (SPES) FOUND ON WWW.SAMTEC.COM.  
2. ATTACH LABEL-4X2 TO EACH REEL.  
3. PICK AND PLACE AREA.

PROPRIETARY NOTE  
THIS DOCUMENT CONTAINS CONFIDENTIAL AND PROPRIETARY INFORMATION AND ALL DESIGN, MANUFACTURING, REPRODUCTION, USE, PATENT RIGHTS AND SALES RIGHTS ARE EXPRESSLY RESERVED BY SAMTEC, INC. THIS DOCUMENT SHALL NOT BE DISCLOSED, IN WHOLE OR PART, TO ANY UNAUTHORIZED PERSON OR ENTITY NOR REPRODUCED, TRANSFERRED OR INCORPORATED IN ANY OTHER PROJECT IN ANY MANNER WITHOUT THE EXPRESS WRITTEN CONSENT OF SAMTEC, INC.

DO NOT SCALE DRAWING  
SHEET SCALE: 6:1  
MATERIAL:  
INSULATOR: LCP, COLOR: BLACK  
CONTACT: COPPER ALLOY  
SHIELD: ZAMAK

DESCRIPTION:  
ACCELERATE-RA MINI ASSEMBLY

DWG. NO.  
AMF6-XX-X-RA-XR

BY: JOE Z 1/18/2022 SHEET 1 OF 1



520 PARK EAST BLVD, NEW ALBANY, IN 47150  
PHONE: 812-944-6733 FAX: 812-948-5047  
e-Mail info@SAMTEC.com code 55322