

DESIGNED AND DIMENSIONED IN INCHES[MILLIMETERS]
ALL DIMENSIONS REFERENCE EXCEPT AS SHOWN

DO NOT
SCALE FROM
THIS PRINT

GPPC-PX-X-XX-XX-ST-SL

TYPE
-P: PCB

SERIES
-C: CABLE CONNECTOR

GENDER
-PF: PLUG FULL DETENT
-PS: PLUG SMOOTH BORE
-PC: PLUG CATCHER'S MITT

TERMINATION
-SL: STUB LAUNCH

ORIENTATION
-ST: STRAIGHT

FINISH
-HG: 30μ" GOLD CENTER CONTACT, 10μ" GOLD OUTER BODY

No OF POSITIONS (PER ROW)
-02
-04
-06
-08
-10

No OF ROWS
-1

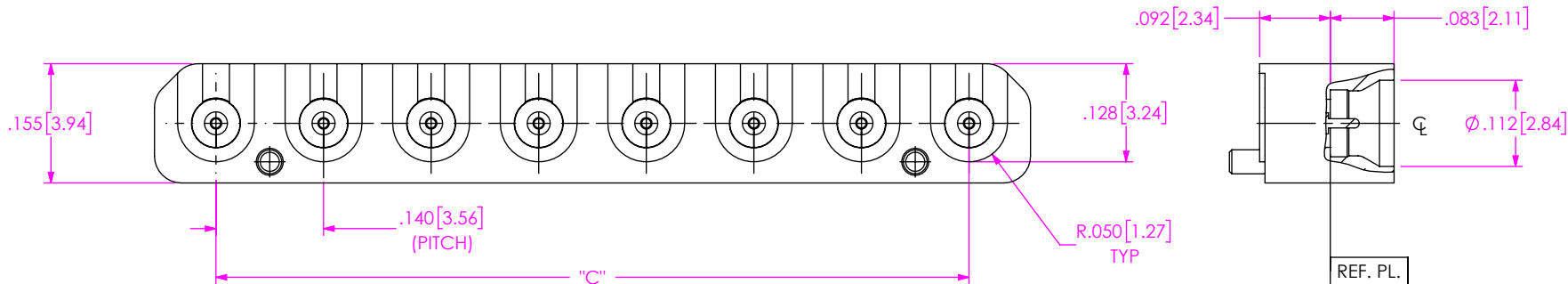
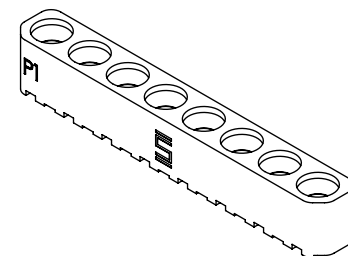
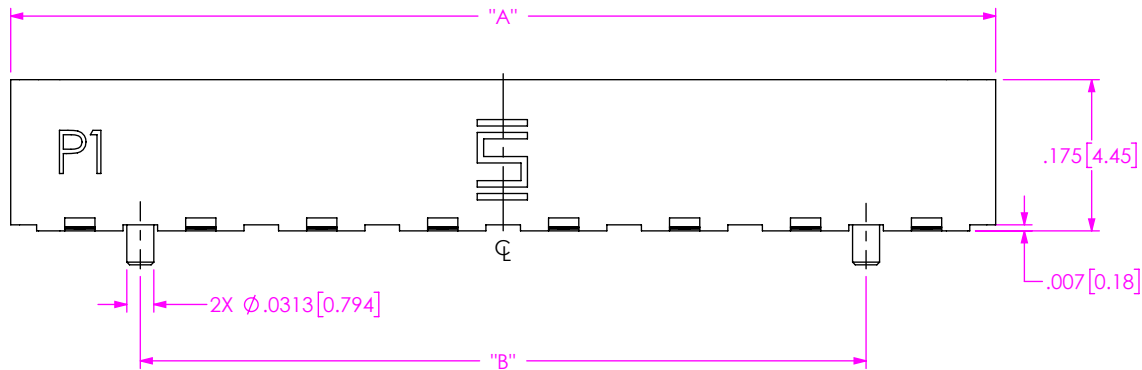


FIG 1
(GPPC-PF-1-08-XX-ST-SL SHOWN)

TABLE 1			
POS	"A"	"B"	"C"
-10	1.420 [36.07]	1.120 [28.45]	1.260 [32.00]
-08	1.140 [28.96]	.840 [21.34]	.980 [24.89]
-06	.860 [21.84]	.560 [14.22]	.700 [17.78]
-04	.580 [14.73]	.280 [7.11]	.420 [10.67]
-02	.300 [7.62]	N/A	.140 [3.56]

NOTES

1. SMPM PLUG INTERFACE I.A.W. MIL-STD-348

PROPRIETARY NOTE
THIS DOCUMENT CONTAINS CONFIDENTIAL AND PROPRIETARY INFORMATION AND ALL DESIGN, MANUFACTURING, REPRODUCTION, USE, PATENT RIGHTS AND SALES RIGHTS ARE EXPRESSLY RESERVED BY SAMTEC, INC. THIS DOCUMENT SHALL NOT BE DISCLOSED, IN WHOLE OR PART, TO ANY UNAUTHORIZED PERSON OR ENTITY NOR REPRODUCED, TRANSFERRED OR INCORPORATED IN ANY OTHER PROJECT IN ANY MANNER WITHOUT THE EXPRESS WRITTEN CONSENT OF SAMTEC, INC.

DO NOT SCALE DRAWING
SHEET SCALE: 4.5:1

MATERIAL:
BODY, PIN: BRASS ALLOY
INSULATOR: VICTREX POLYMER
ALIGNMENT PIN: STAINLESS STEEL

samtec
520 PARK EAST BLVD, NEW ALBANY, IN 47150
PHONE: 812-944-6733 FAX: 812-948-5047
e-Mail info@SAMTEC.com code 55322

DESCRIPTION: RECEPTACLE, SMPM, STUB LAUNCH

DWG. NO. GPPC-PX-X-XX-XX-ST-SL

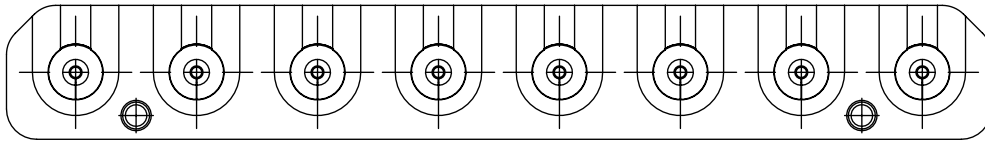


FIG 2
(GPPC-PS-1-08-XX-ST-SL SHOWN)
(SAME AS FIG 1, EXCEPT AS SHOWN)

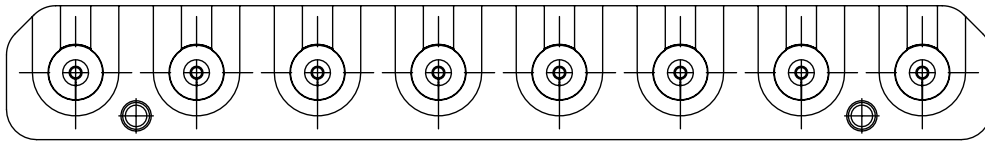
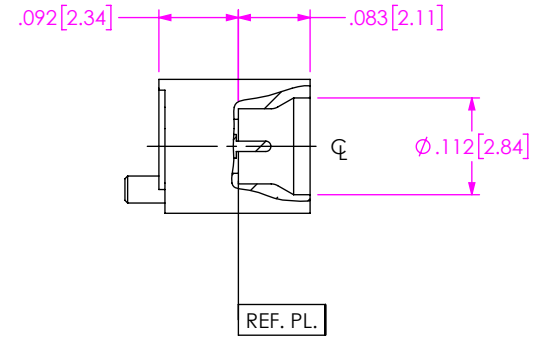
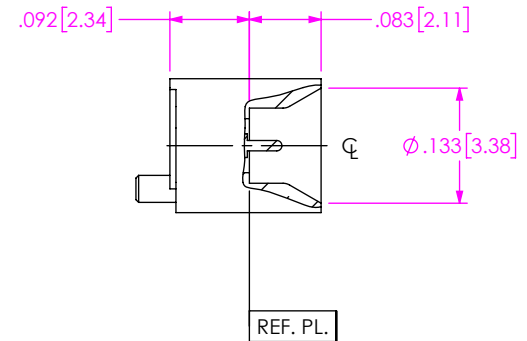


FIG 3
(GPPC-PC-1-08-XX-ST-SL SHOWN)
(SAME AS FIG 1, EXCEPT AS SHOWN)



PROPRIETARY NOTE
* THIS DOCUMENT CONTAINS CONFIDENTIAL AND PROPRIETARY INFORMATION AND ALL DESIGN, MANUFACTURING, REPRODUCTION, USE, PATENT RIGHTS AND SALES RIGHTS ARE EXPRESSLY RESERVED BY SAMTEC, INC. THIS DOCUMENT SHALL NOT BE DISCLOSED, IN WHOLE OR PART, TO ANY UNAUTHORIZED PERSON OR ENTITY NOR REPRODUCED, TRANSFERRED OR INCORPORATED IN ANY OTHER PROJECT IN ANY MANNER WITHOUT THE EXPRESS WRITTEN CONSENT OF SAMTEC, INC. *



520 PARK EAST BLVD, NEW ALBANY, IN 47150
PHONE: 812-944-6733 FAX: 812-948-5047
e-Mail info@SAMTEC.com code 55322

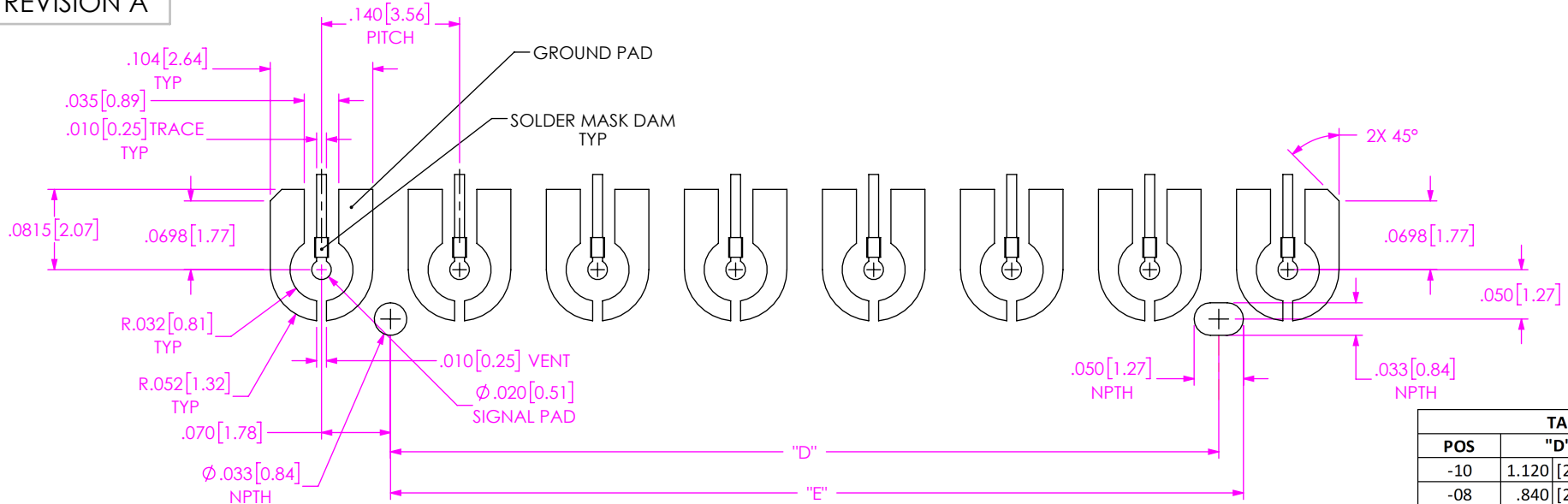
DO NOT SCALE DRAWING

DESCRIPTION:
RECEPTACLE, SMPM, STUB LAUNCH

DWG. NO.
GPPC-PX-X-XX-XX-ST-SL

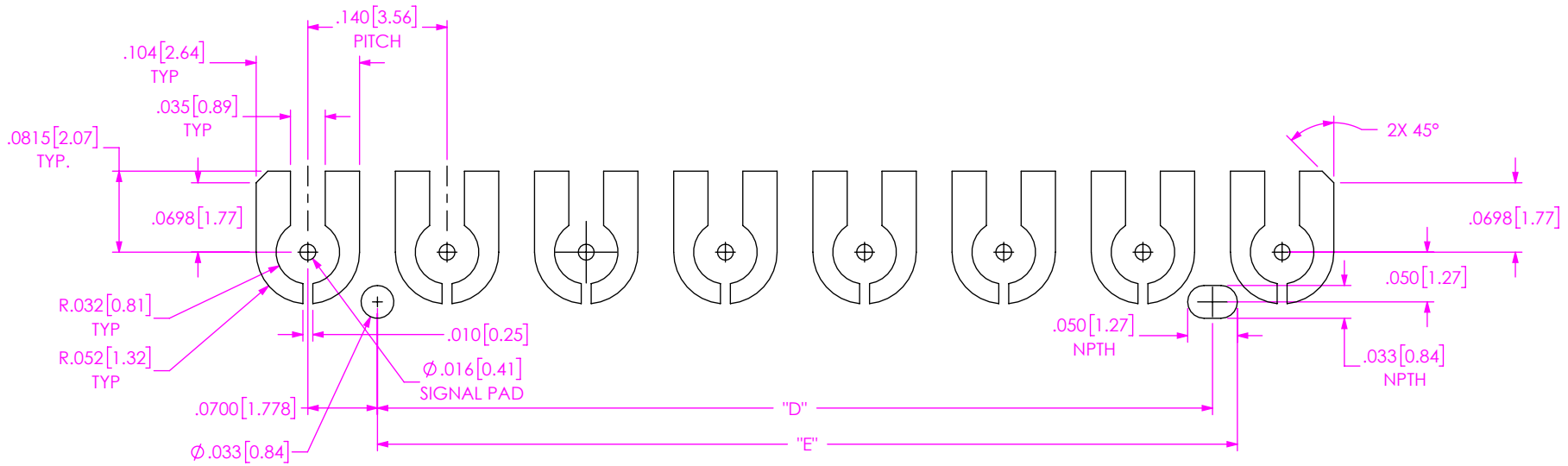
SHEET SCALE: 4.5:1

BY: MATT M. 09/24/2021 SHEET 2 OF 3



STENCIL/MOUNTING FOOTPRINT FOR SMPM 1X8 .140 PITCH STUB LAUNCH PCB SURFACE MOUNT
(MICROSTRIP APPLICATION)

POS	"D"	"E"
-10	1.120 [28.45]	1.145 [29.08]
-08	.840 [21.34]	.865 [21.97]
-06	.560 [14.22]	.585 [14.86]
-04	.280 [7.11]	.305 [7.75]
-02	N/A	N/A



STENCIL/MOUNTING FOOTPRINT FOR SMPM 1X8 .140 PITCH STUB LAUNCH PCB SURFACE MOUNT
(STRIPLINE APPLICATION)

NOTES

1. RECOMMENDED STENCIL THICKNESS: .005 MAX.

PROPRIETARY NOTE
THIS DOCUMENT CONTAINS CONFIDENTIAL AND PROPRIETARY INFORMATION AND ALL DESIGN, MANUFACTURING, REPRODUCTION, USE, PATENT RIGHTS AND SALES RIGHTS ARE EXPRESSLY RESERVED BY SAMTEC, INC. THIS DOCUMENT SHALL NOT BE DISCLOSED, IN WHOLE OR PART, TO ANY UNAUTHORIZED PERSON OR ENTITY NOR REPRODUCED, TRANSFERRED OR INCORPORATED IN ANY OTHER PROJECT IN ANY MANNER WITHOUT THE EXPRESS WRITTEN CONSENT OF SAMTEC, INC.



520 PARK EAST BLVD, NEW ALBANY, IN 47150
PHONE: 812-944-6733 FAX: 812-948-5047
e-Mail info@SAMTEC.com code 53322

DO NOT SCALE DRAWING

SHEET SCALE: 6:1

DESCRIPTION:
RECEPTACLE, SMPM, STUB LAUNCH

DWG. NO.
GPPC-PX-X-XX-XX-ST-SL

BY: MATT M. 09/24/2021 SHEET 3 OF 3