

DESIGNED AND DIMENSIONED IN MILLIMETERS [INCHES]
ALL DIMENSIONS REFERENCE EXCEPT AS SHOWN

HSEC6-XXX-XX-X-DV-X-WT-XR

DO NOT SCALE FROM THIS PRINT

No OF POSITIONS
-028, -042, -070, -084
(PER ROW)

TAPE & REEL (SEE NOTE 5 & 6)
-TR: TAPE & REEL
-FR: FULL REEL QTY TAPE & REEL

CARD THICKNESS
-01: 1.57 [0.062] CARD

WELD TAB OPTION
-WT: WELD TAB
(WT MUST BE USED ON EVERYTHING BUT SHIELDED 28 POS PARTS)

PLATING SPECIFICATION
-S: 30µ" SELECTIVE GOLD IN CONTACT AREA, MATTE TIN ON TAIL

SHIELD OPTION
BLANK: NO SHIELD
-S: SHIELD (SEE SHT 5)
(NOT AVAILABLE WITH -084 POS OPTION)

ROW SPECIFICATION
-DV: DOUBLE VERTICAL

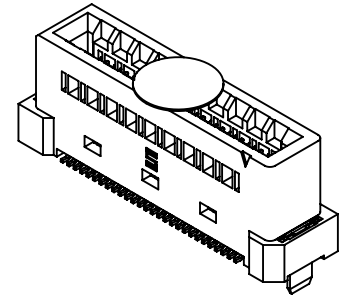
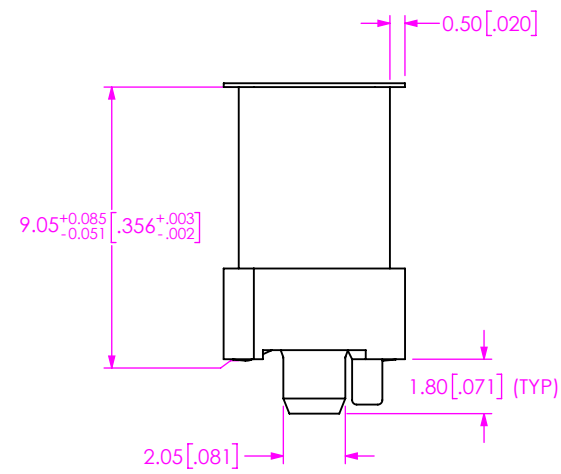
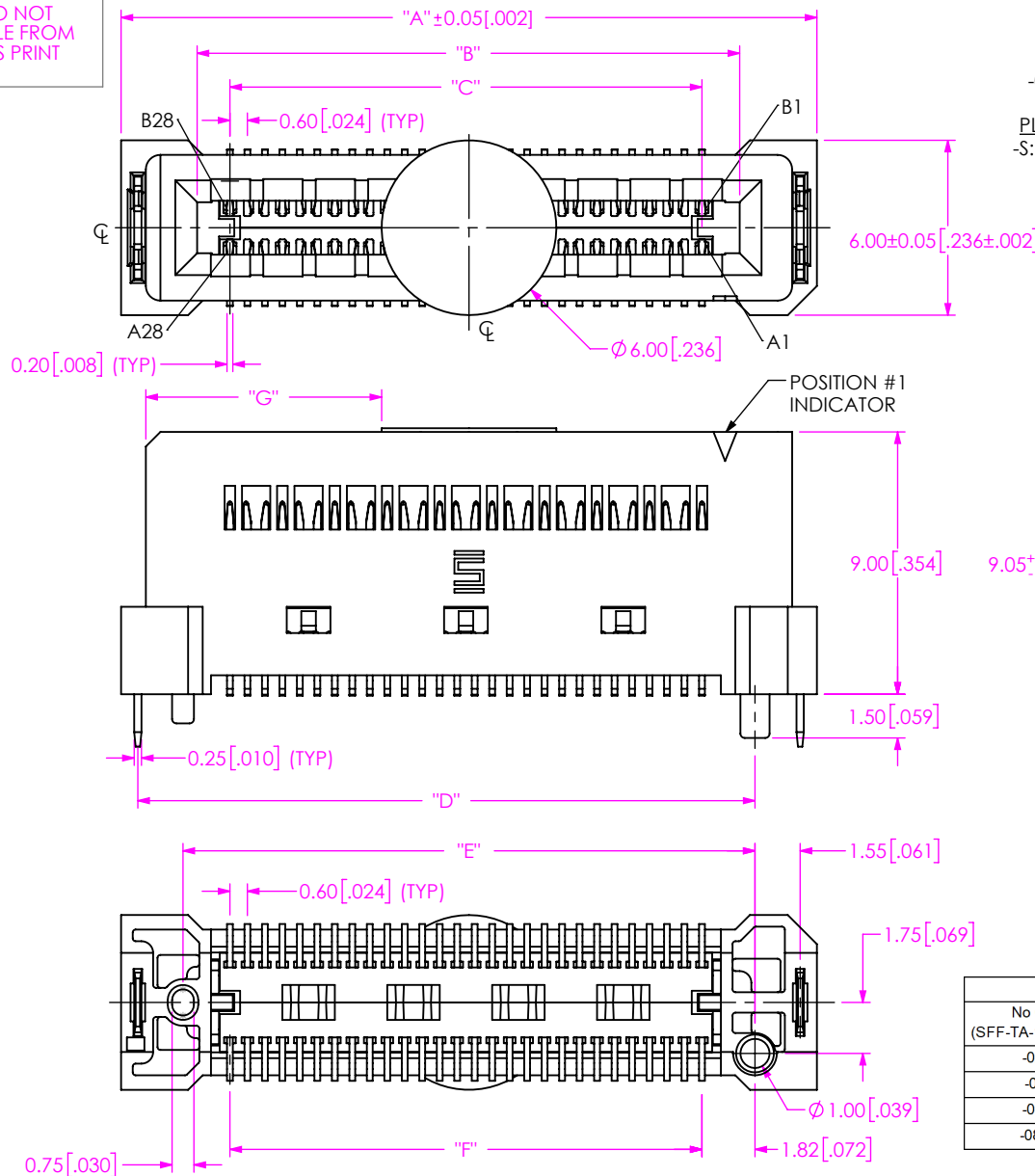


FIG 1
HSEC6-028-01-X-DV SHOWN

TABLE 1							
No OF POS (SFF-TA-1002 CONFIG)	"A"	"B"	"C"	"D"	"E"	"F"	"G"
-028 (1C)	23.88 [0.940]	18.62 [0.733]	16.20 [0.638]	21.18 [0.834]	19.63 [0.773]	16.20 [0.638]	8.09 [0.319]
-042(2C)	35.60 [1.402]	30.61 [1.205]	28.01 [1.103]	32.90 [1.295]	31.35 [1.234]	28.01 [1.103]	13.95 [0.549]
-070 (4C)	57.02 [2.245]	51.72 [2.036]	49.12 [1.934]	54.32 [2.139]	52.77 [2.078]	49.12 [1.934]	24.66 [0.971]
-084(4C+)	69.17 [2.723]	63.92 [2.516]	61.32 [2.414]	66.52 [2.619]	64.97 [2.558]	61.32 [2.414]	30.76 [1.211]

NOTES:

- NOTE DELETED.
- NOTE DELETED.
- K-DOT PROVIDED AS STANDARD.
- THIS TABLE DENOTES "SIG" OR "GND" PIN GEOMETRY LOCATIONS. GROUNDS ARE NOT BUSSED TOGETHER IN THE CONNECTOR AND WILL ONLY BE BUSSED TOGETHER IF THE PCB IS DESIGNED AS SUCH.
- ORDERS WILL BE PACKAGED ACCORDING TO THE SAMTEC PACKAGING EFFICIENCY STANDARDS (SPES) FOUND ON WWW.SAMTEC.COM.
- ATTACH LABEL-4X2 TO EACH REEL.

PROPRIETARY NOTE
THIS DOCUMENT CONTAINS CONFIDENTIAL AND PROPRIETARY INFORMATION AND ALL DESIGN, MANUFACTURING, REPRODUCTION, USE, PATENT RIGHTS AND SALES RIGHTS ARE EXPRESSLY RESERVED BY SAMTEC, INC. THIS DOCUMENT SHALL NOT BE DISCLOSED, IN WHOLE OR PART, TO ANY UNAUTHORIZED PERSON OR ENTITY NOR REPRODUCED, TRANSFERRED OR INCORPORATED IN ANY OTHER PROJECT IN ANY MANNER WITHOUT THE EXPRESS WRITTEN CONSENT OF SAMTEC, INC.



520 PARK EAST BLVD, NEW ALBANY, IN 47150
PHONE: 812-944-6733 FAX: 812-948-5047
e-Mail info@SAMTEC.com code 55322

DO NOT SCALE DRAWING
SHEET SCALE: 1:2
MATERIAL:
INSULATOR: LCP, COLOR: BLACK
CONTACT: CU ALLOY
WELD TAB: CU ALLOY
SHIELD: CU ALLOY

DESCRIPTION:
0.6mm HIGH SPEED EDGE CARD ASSEMBLY

DWG. NO.
HSEC6-XXX-XX-X-DV-X-WT-XR

BY: JOE Z 05/24/2018 SHEET 1 OF 6

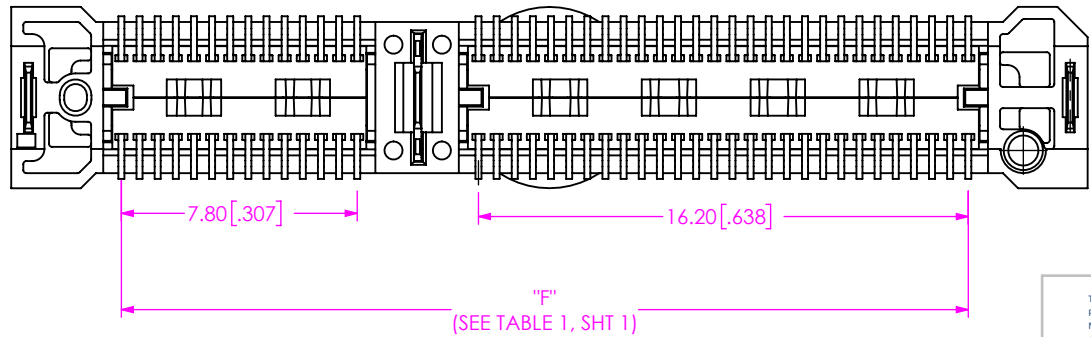
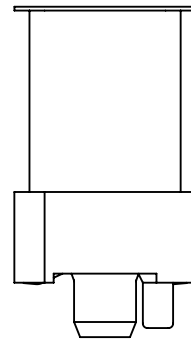
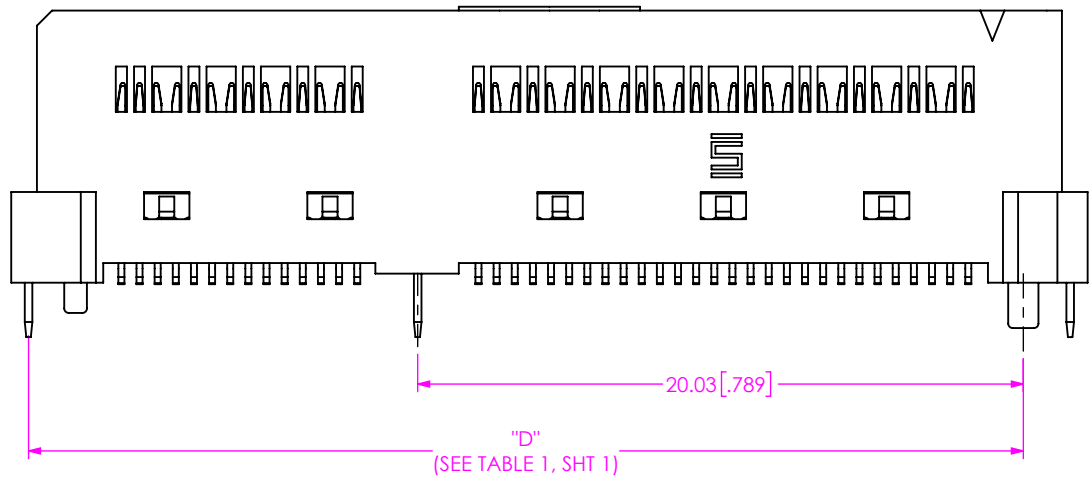
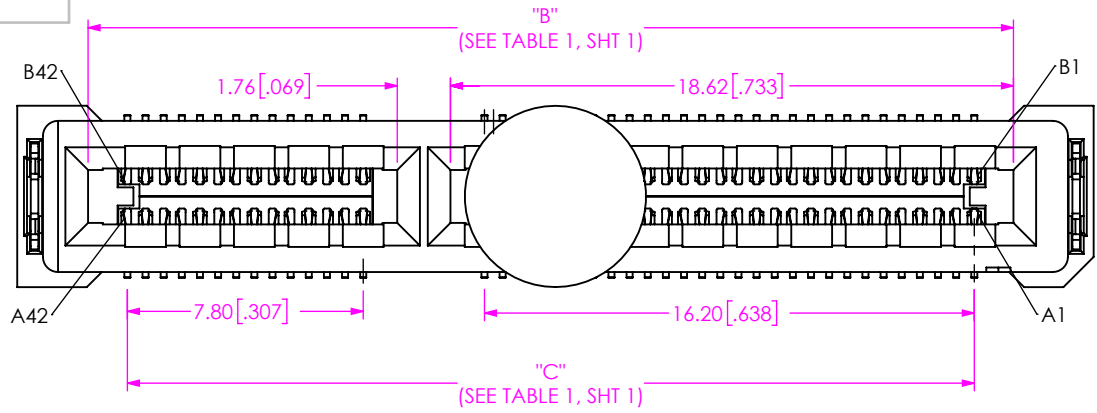


FIG 2
HSEC6-042-01-X-DV-WT SHOWN
(DIFFERENT AS SHOWN, OTHERWISE SAME AS FIG 1)

PROPRIETARY NOTICE
THIS DOCUMENT CONTAINS CONFIDENTIAL AND PROPRIETARY INFORMATION AND ALL DESIGN, MANUFACTURING, REPRODUCTION, USE, PATENT RIGHTS AND SALES RIGHTS ARE EXPRESSLY RESERVED BY SAMTEC, INC. THIS DOCUMENT SHALL NOT BE DISCLOSED, IN WHOLE OR PART, TO ANY UNAUTHORIZED PERSON OR ENTITY NOR REPRODUCED, TRANSFERRED OR INCORPORATED IN ANY OTHER PROJECT IN ANY MANNER WITHOUT THE EXPRESS WRITTEN CONSENT OF SAMTEC, INC.



520 PARK EAST BLVD., NEW ALBANY, IN 47150
PHONE: 812-944-6733 FAX: 812-948-5047
e-Mail: info@SAMTEC.com code 55322

DO NOT SCALE DRAWING
SHEET SCALE: 1:2

DESCRIPTION:
0.6mm HIGH SPEED EDGE CARD ASSEMBLY

DWG. NO.
HSEC6-XXX-XX-X-DV-X-WT-XR

BY: JOE Z 05/24/2018 SHEET 2 OF 6

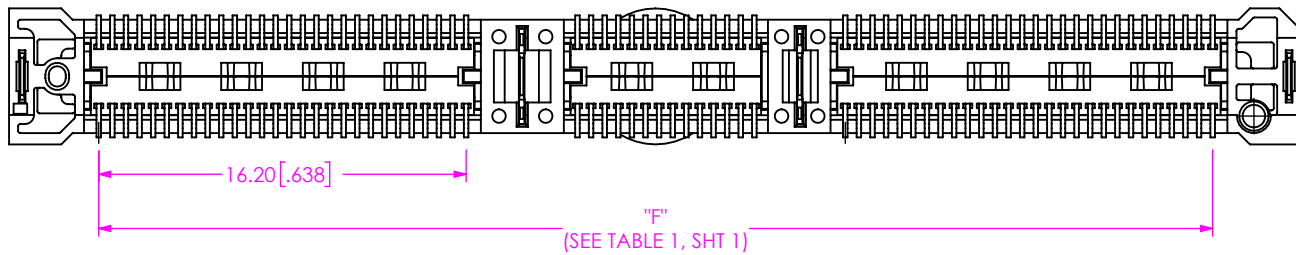
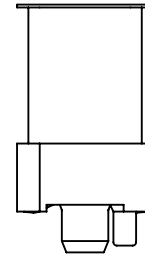
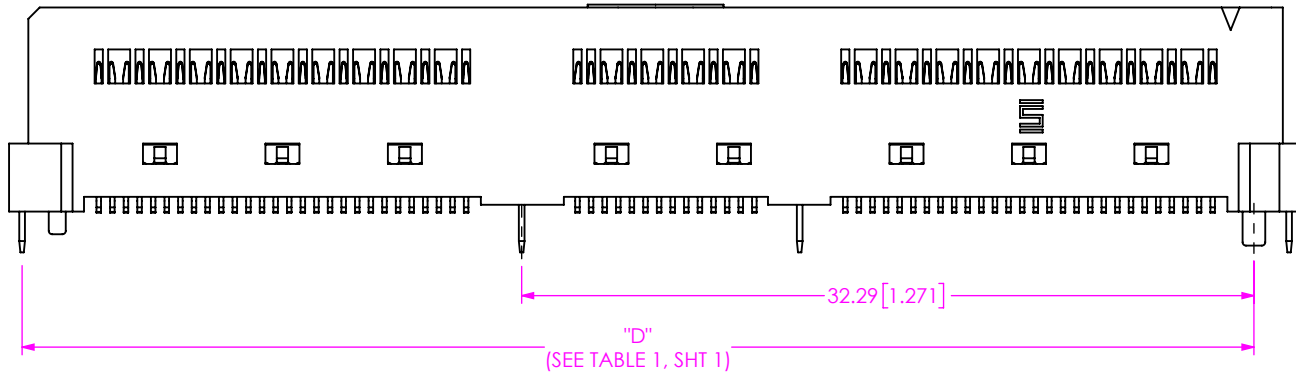
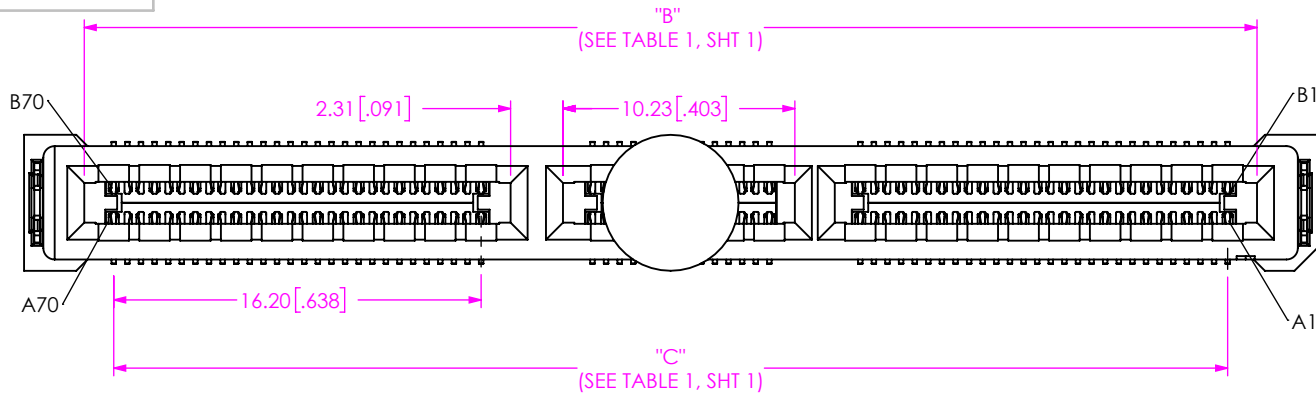


FIG 3
HSEC6-070-01-X-DV-WT SHOWN
(DIFFERENT AS SHOWN, OTHERWISE SAME AS FIG 2)

PROPRIETARY NOTE
 THIS DOCUMENT CONTAINS CONFIDENTIAL AND PROPRIETARY INFORMATION AND ALL DESIGN, MANUFACTURING, REPRODUCTION, USE, PATENT RIGHTS AND SALES RIGHTS ARE EXPRESSLY RESERVED BY SAMTEC, INC. THIS DOCUMENT SHALL NOT BE DISCLOSED, IN WHOLE OR PART, TO ANY UNAUTHORIZED PERSON OR ENTITY NOR REPRODUCED, TRANSFERRED OR INCORPORATED IN ANY OTHER PROJECT IN ANY MANNER WITHOUT THE EXPRESS WRITTEN CONSENT OF SAMTEC, INC.

samtec
 520 PARK EAST BLVD., NEW ALBANY, IN 47150
 PHONE: 812-944-6733 FAX: 812-948-5047
 e-Mail: info@SAMTEC.com code 55322

DO NOT SCALE DRAWING
 SHEET SCALE: 1:2

DESCRIPTION:
 0.6mm HIGH SPEED EDGE CARD ASSEMBLY

DWG. NO.
 HSEC6-XXX-XX-X-DV-X-WT-XR

BY: JOE Z 05/24/2018 SHEET 3 OF 6

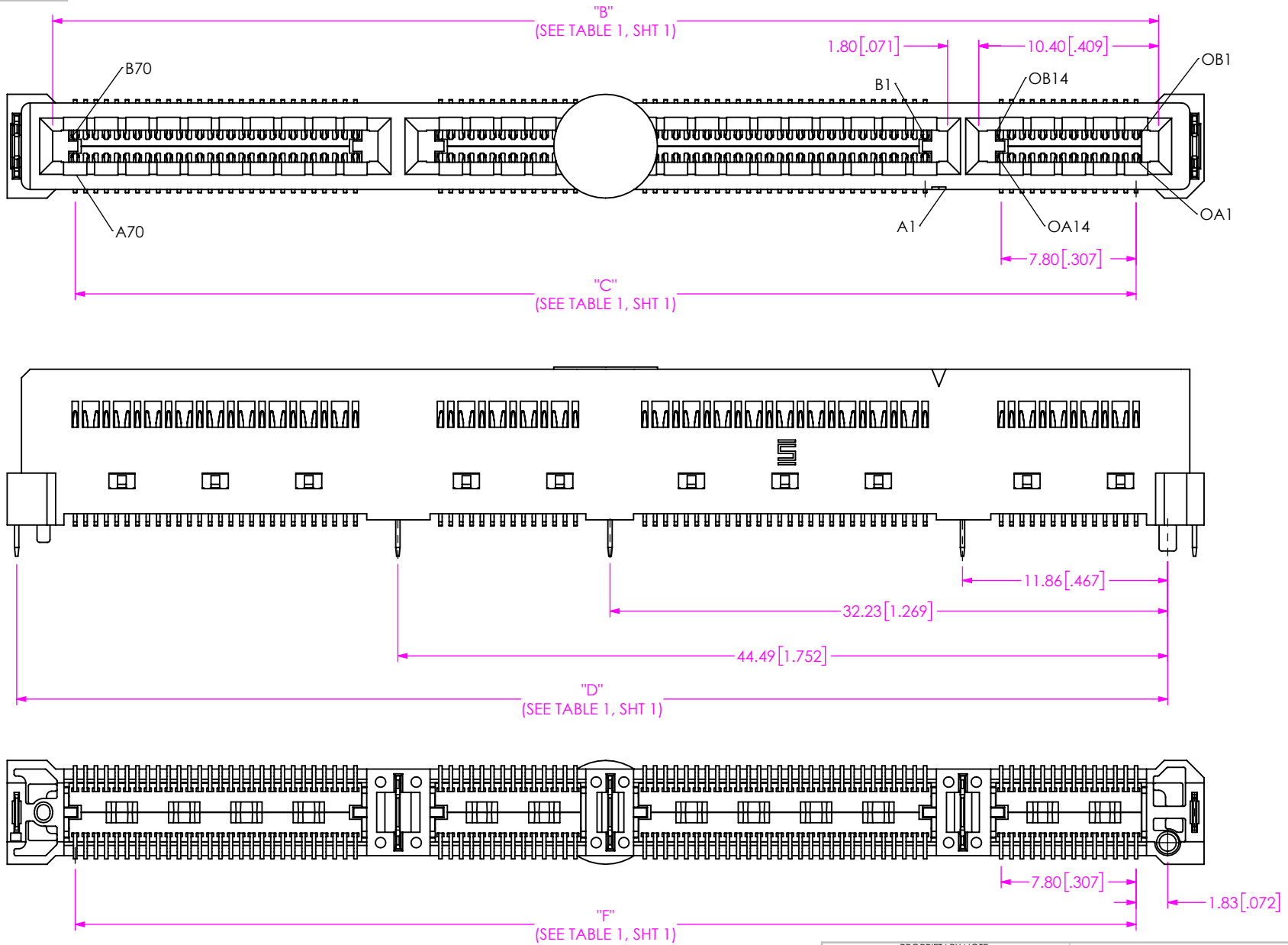


FIG 4
HSEC6-084-01-X-DV-WT SHOWN
(DIFFERENT AS SHOWN, OTHERWISE SAME AS FIG 3)

PROPRIETARY NOTE
THIS DOCUMENT CONTAINS CONFIDENTIAL AND PROPRIETARY INFORMATION AND ALL DESIGN, MANUFACTURING, REPRODUCTION, USE, PATENT RIGHTS AND SALES RIGHTS ARE EXPRESSLY RESERVED BY SAMTEC, INC. THIS DOCUMENT SHALL NOT BE DISCLOSED, IN WHOLE OR PART, TO ANY UNAUTHORIZED PERSON OR ENTITY NOR REPRODUCED, TRANSFERRED OR INCORPORATED IN ANY OTHER PROJECT IN ANY MANNER WITHOUT THE EXPRESS WRITTEN CONSENT OF SAMTEC, INC.



520 PARK EAST BLVD, NEW ALBANY, IN 47150
PHONE: 812-944-6733 FAX: 812-948-5047
e-Mail info@SAMTEC.com code 55322

DO NOT SCALE DRAWING
SHEET SCALE: 1:2

DESCRIPTION:
0.6mm HIGH SPEED EDGE CARD ASSEMBLY

DWG. NO.
HSEC6-XXX-XX-X-DV-X-WT-XR

BY: JOE Z 05/24/2018 SHEET 4 OF 6

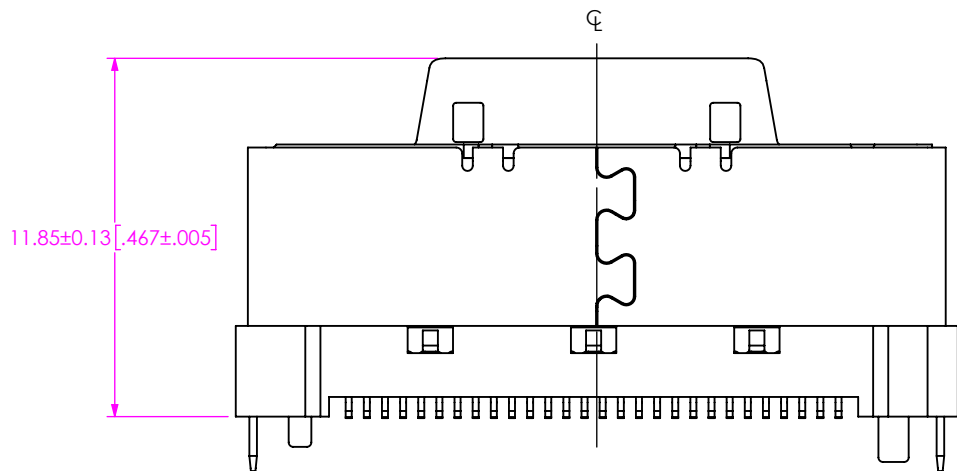
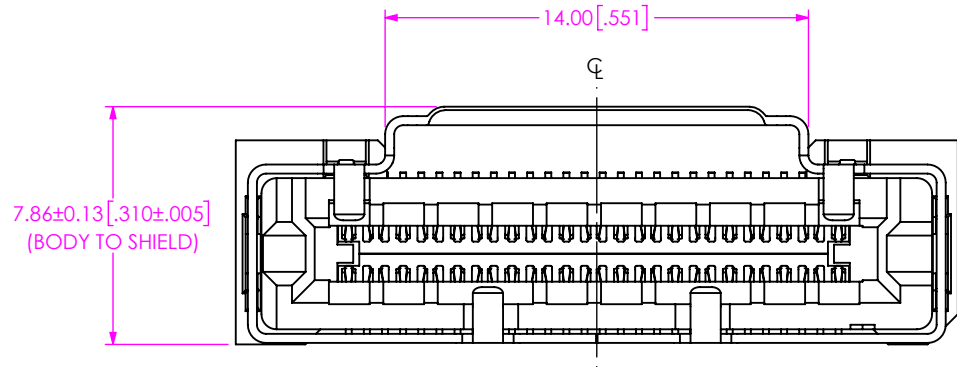


FIG 5
HSEC6-028-01-X-DV-S SHOWN
(DIFFERENT AS SHOWN, OTHERWISE SAME AS FIG 1)

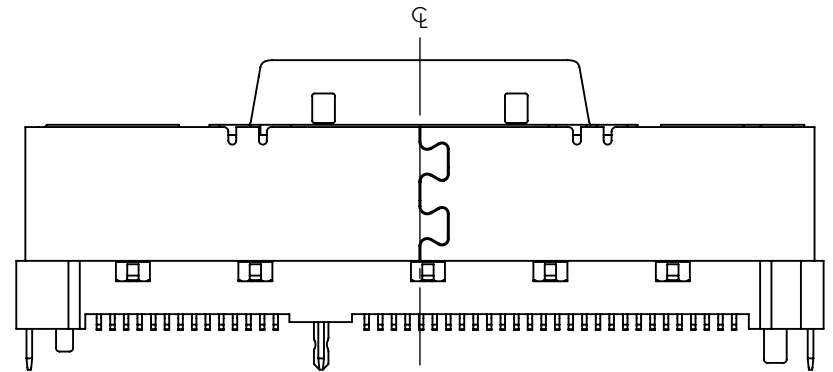
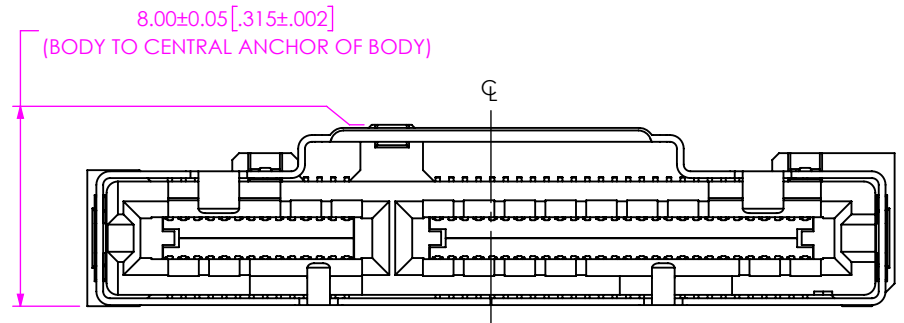


FIG 6
HSEC6-042-01-X-DV-S SHOWN
(DIFFERENT AS SHOWN, OTHERWISE SAME AS FIG 5)

PROPRIETARY NOTE

THIS DOCUMENT CONTAINS CONFIDENTIAL AND PROPRIETARY INFORMATION AND ALL DESIGN, MANUFACTURING, REPRODUCTION, USE, PATENT RIGHTS AND SALES RIGHTS ARE EXPRESSLY RESERVED BY SAMTEC, INC. THIS DOCUMENT SHALL NOT BE DISCLOSED, IN WHOLE OR PART, TO ANY UNAUTHORIZED PERSON OR ENTITY NOR REPRODUCED, TRANSFERRED OR INCORPORATED IN ANY OTHER PROJECT IN ANY MANNER WITHOUT THE EXPRESS WRITTEN CONSENT OF SAMTEC, INC.



520 PARK EAST BLVD, NEW ALBANY, IN 47150
PHONE: 812-944-6733 FAX: 812-948-5047
e-Mail info@SAMTEC.com code 55322

DO NOT SCALE DRAWING
SHEET SCALE: 5:1

DESCRIPTION:
0.6mm HIGH SPEED EDGE CARD ASSEMBLY

DWG. NO.
HSEC6-XXX-XX-X-DV-X-WT-XR

BY: JOE Z 05/24/2018 SHEET 5 OF 6

Pin Geometry Pattern (28 POSITION (1C))

(SEE NOTE 4)

POSITIONS

SIDE A	1	2	3	4	5	6	7	8	9	10	11	12	13	14	15	16	17	18	19	20	21	22	23	24	25	26	27	28
NAME	GND	SIG	SIG	GND	SIG	SIG	GND	SIG	SIG	GND	SIG	SIG	GND	SIG	SIG	GND	SIG	SIG	GND	SIG	SIG	GND	SIG	SIG	GND	SIG	SIG	GND
SIDE B	1	2	3	4	5	6	7	8	9	10	11	12	13	14	15	16	17	18	19	20	21	22	23	24	25	26	27	28

Users should refer to the SFF-TA-1002 standard for formal guidance on signal mapping naming.

Pin Geometry Pattern (42 POSITION (2C))

(SEE NOTE 4)

POSITIONS

SIDE A	1	2	3	4	5	6	7	8	9	10	11	12	13	14	15	16	17	18	19	20	21	22	23	24	25	26	27	28
NAME	GND	SIG	SIG	GND	SIG	SIG	GND	SIG	SIG	GND	SIG	SIG	GND	SIG	SIG	GND	SIG	SIG	GND	SIG	SIG	GND	SIG	SIG	GND	SIG	SIG	GND
SIDE B	1	2	3	4	5	6	7	8	9	10	11	12	13	14	15	16	17	18	19	20	21	22	23	24	25	26	27	28
SIDE A	29	30	31	32	33	34	35	36	37	38	39	40	41	42														
NAME	GND	SIG	SIG	GND	SIG	SIG	GND	SIG	SIG	GND	SIG	SIG	GND	SIG														
SIDE B	29	30	31	32	33	34	35	36	37	38	39	40	41	42														

Users should refer to the SFF-TA-1002 standard for formal guidance on signal mapping naming.

Pin Geometry Pattern (70 POSITION (4C))

(SEE NOTE 4)

POSITIONS

SIDE A	1	2	3	4	5	6	7	8	9	10	11	12	13	14	15	16	17	18	19	20	21	22	23	24	25	26	27	28							
NAME	GND	SIG	SIG	GND	SIG	SIG	GND	SIG	SIG	GND	SIG	SIG	GND	SIG	SIG	GND	SIG	SIG	GND	SIG	SIG	GND	SIG	SIG	GND	SIG	SIG	GND							
SIDE B	1	2	3	4	5	6	7	8	9	10	11	12	13	14	15	16	17	18	19	20	21	22	23	24	25	26	27	28							
SIDE A	36	37	38	39	40	41	42	43	44	45	46	47	48	49	50	51	52	53	54	55	56	57	58	59	60	61	62	63	64	65	66	67	68	69	70
NAME	SIG	SIG	GND	SIG	SIG	GND	SIG	GND	SIG	SIG	GND	SIG	SIG	GND	SIG	SIG	GND	SIG	SIG	GND	SIG	SIG	GND	SIG	SIG	GND	SIG	SIG	GND	SIG	SIG	GND	SIG	SIG	GND
SIDE B	36	37	38	39	40	41	42	43	44	45	46	47	48	49	50	51	52	53	54	55	56	57	58	59	60	61	62	63	64	65	66	67	68	69	70

Users should refer to the SFF-TA-1002 standard for formal guidance on signal mapping naming.

Pin Geometry Pattern (84 POSITION (4C+))

(SEE NOTE 4)

POSITIONS

SIDE A	1	2	3	4	5	6	7	8	9	10	11	12	13	14	15	16	17	18	19	20	21	22	23	24	25	26	27	28							
NAME	GND	SIG	SIG	GND	SIG	SIG	GND	SIG	SIG	GND	SIG	SIG	GND	SIG	SIG	GND	SIG	SIG	GND	SIG	SIG	GND	SIG	SIG	GND	SIG	SIG	GND							
SIDE B	1	2	3	4	5	6	7	8	9	10	11	12	13	14	15	16	17	18	19	20	21	22	23	24	25	26	27	28							
SIDE A	36	37	38	39	40	41	42	43	44	45	46	47	48	49	50	51	52	53	54	55	56	57	58	59	60	61	62	63	64	65	66	67	68	69	70
NAME	SIG	SIG	GND	SIG	SIG	GND	SIG	GND	SIG	SIG	GND	SIG	SIG	GND	SIG	SIG	GND	SIG	SIG	GND	SIG	SIG	GND	SIG	SIG	GND	SIG	SIG	GND	SIG	SIG	GND	SIG	SIG	GND
SIDE B	36	37	38	39	40	41	42	43	44	45	46	47	48	49	50	51	52	53	54	55	56	57	58	59	60	61	62	63	64	65	66	67	68	69	70
SIDE A	OA1	OA2	OA3	OA4	OA5	OA6	OA7	OA8	OA9	OA10	OA11	OA12	OA13	OA14																					
NAME	GND	SIG	SIG	GND	SIG	SIG	GND	SIG	SIG	GND	SIG	SIG	GND	SIG																					
SIDE B	OB1	OB2	OB3	OB4	OB5	OB6	OB7	OB8	OB9	OB10	OB11	OB12	OB13	OB14																					

Users should refer to the SFF-TA-1002 standard for formal guidance on signal mapping naming.

PROPRIETARY NOTE

THIS DOCUMENT CONTAINS CONFIDENTIAL AND PROPRIETARY INFORMATION AND ALL DESIGN, MANUFACTURING, REPRODUCTION, USE, PATENT RIGHTS AND SALES RIGHTS ARE EXPRESSLY RESERVED BY SAMTEC, INC. THIS DOCUMENT SHALL NOT BE DISCLOSED, IN WHOLE OR PART, TO ANY UNAUTHORIZED PERSON OR ENTITY NOR REPRODUCED, TRANSFERRED OR INCORPORATED IN ANY OTHER PROJECT IN ANY MANNER WITHOUT THE EXPRESS WRITTEN CONSENT OF SAMTEC, INC.



520 PARK EAST BLVD., NEW ALBANY, IN 47150
 PHONE: 812-944-6733 FAX: 812-948-5047
 e-Mail info@SAMTEC.com code 53322

SHEET SCALE: 1:2

DESCRIPTION:
 0.6mm HIGH SPEED EDGE CARD ASSEMBLY

DWG. NO.
 HSEC6-XXX-XX-X-DV-X-WT-XR

BY: JOE Z 05/24/2018 SHEET 6 OF 6