

DESIGNED AND DIMENSIONED IN MILLIMETERS[INCHES]  
EXCEPT WHERE NOTED, ALL DIMENSIONS ARE REFERENCE

DO NOT  
SCALE FROM  
THIS PRINT

IMPCC-XX-XX

NO. OF POSITIONS

- 02, -03, -04, -05,
- 06, -07, -08, -09,
- 10

LEAD STYLE

- 01: 16 AWG 300V
- 16 AWG 600V(FEP)
- 02: 18 AWG 300V
- 03: 18 AWG 300V(FEP)

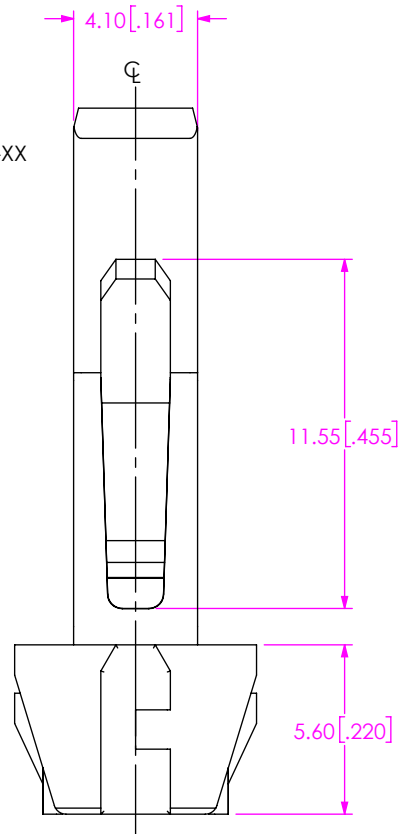
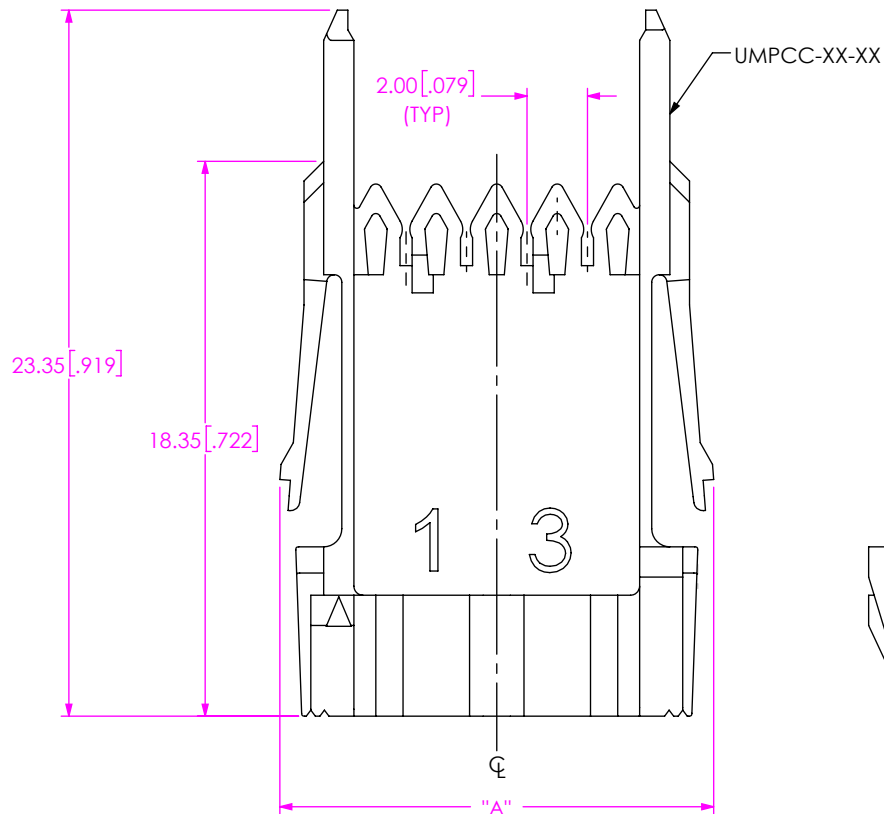
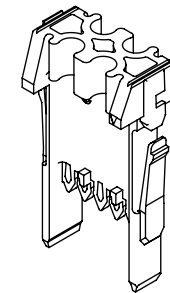


FIG. 1  
IMPCC-04-01 SHOWN

TABLE 1		
No OF POSITIONS	"A"	"B"
-02	10.35 [0.407]	8.30 [0.327]
-03	12.35 [0.486]	10.30 [0.406]
-04	14.35 [0.565]	12.30 [0.484]
-05	16.35 [0.644]	14.30 [0.563]
-06	18.35 [0.722]	16.30 [0.642]
-07	20.35 [0.801]	18.30 [0.720]
-08	22.35 [0.880]	20.30 [0.799]
-09	24.35 [0.959]	22.30 [0.878]
-10	26.35 [1.037]	24.30 [0.957]

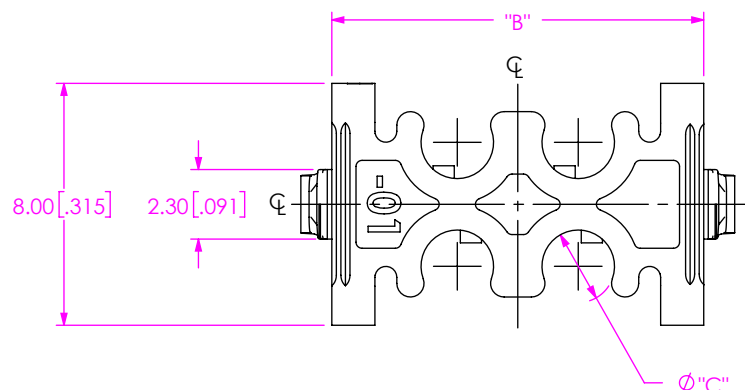


TABLE 2	
LEAD STYLE	"C"
-01	2.40 [0.094]
-02	2.10 [0.083]
-03	1.80 [0.071]

NOTES:  
1. PARTS TO BE PACKAGED IN UNIFORM LAYER.

PROPRIETARY NOTE

THIS DOCUMENT CONTAINS CONFIDENTIAL AND PROPRIETARY INFORMATION AND ALL DESIGN, MANUFACTURING, REPRODUCTION, USE, PATENT RIGHTS AND SALES RIGHTS ARE EXPRESSLY RESERVED BY SAMTEC, INC. THIS DOCUMENT SHALL NOT BE DISCLOSED, IN WHOLE OR PART, TO ANY UNAUTHORIZED PERSON OR ENTITY NOR REPRODUCED, TRANSFERRED OR INCORPORATED IN ANY OTHER PROJECT IN ANY MANNER WITHOUT THE EXPRESS WRITTEN CONSENT OF SAMTEC, INC.



520 PARK EAST BLVD. NEW ALBANY, IN 47150  
PHONE: 812-944-6733 FAX: 812-948-5047  
e-Mail: info@SAMTEC.com code: 55322

DO NOT SCALE DRAWING  
SHEET SCALE: 2:1  
MATERIAL:  
INSULATOR: NYLON PA66, COLOR BLACK

DESCRIPTION: UMPCC CABLE HOLDER

DWG. NO. IMPCC-XX-XX

BY: ETHAN C 07/19/2019 SHEET 1 OF 2

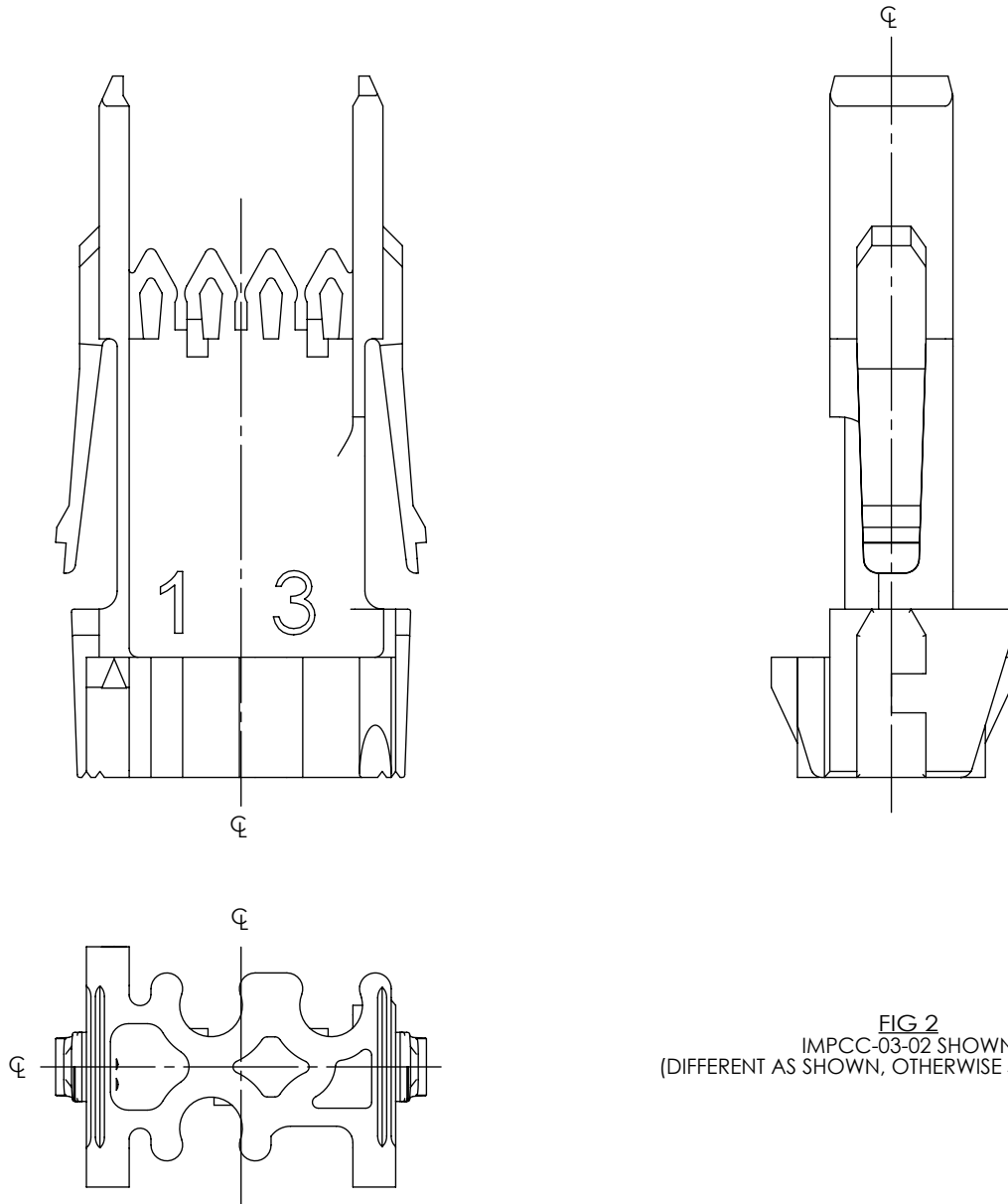


FIG 2  
 IMPC-03-02 SHOWN  
 (DIFFERENT AS SHOWN, OTHERWISE SAME AS FIG 1)

**PROPRIETARY NOTE**  
 \* THIS DOCUMENT CONTAINS CONFIDENTIAL AND PROPRIETARY INFORMATION AND ALL DESIGN, MANUFACTURING, REPRODUCTION, USE, PATENT RIGHTS AND SALES RIGHTS ARE EXPRESSLY RESERVED BY SAMTEC, INC. THIS DOCUMENT SHALL NOT BE DISCLOSED, IN WHOLE OR PART, TO ANY UNAUTHORIZED PERSON OR ENTITY NOR REPRODUCED, TRANSFERRED OR INCORPORATED IN ANY OTHER PROJECT IN ANY MANNER WITHOUT THE EXPRESS WRITTEN CONSENT OF SAMTEC, INC. \*



520 PARK EAST BLVD, NEW ALBANY, IN 47150  
 PHONE: 812-944-6733 FAX: 812-948-5047  
 e-Mail: info@SAMTEC.com code: 55322

SHEET SCALE: 2:1

DESCRIPTION: UMPC CABLE HOLDER

DWG. NO. IMPC-XX-XX

BY: ETHAN C 07/19/2019 SHEET 2 OF 2