

DO NOT SCALE FROM THIS PRINT

No. OF POS	"A"	"B"	"C"	"D"	"E"
-04	3.00 [0.118]	9.39 [0.370]	17.75 [0.699]	21.75 [0.856]	12.80 [0.504]
-05	4.00 [0.157]	10.39 [0.409]	18.75 [0.738]	22.75 [0.896]	13.80 [0.543]
-07	6.00 [0.236]	12.39 [0.488]	20.75 [0.817]	24.75 [0.974]	15.80 [0.622]
-10	9.00 [0.354]	15.39 [0.606]	23.75 [0.935]	27.75 [1.093]	18.80 [0.740]
-15	14.00 [0.551]	20.39 [0.803]	28.75 [1.132]	32.75 [1.289]	23.80 [0.937]
-20	19.00 [0.748]	25.39 [1.000]	25.39 [1.000]	37.75 [1.486]	28.80 [1.134]
-25	24.00 [0.945]	30.39 [1.196]	38.75 [1.526]	42.75 [1.683]	33.80 [1.331]
-30	29.00 [1.142]	35.39 [1.393]	43.75 [1.722]	47.75 [1.880]	38.80 [1.528]
-40	39.00 [1.535]	45.39 [1.787]	53.75 [2.116]	57.75 [2.274]	48.80 [1.921]

No OF POSITIONS  
\*-04, \*-05, \*-07, -10, -15,  
\*-20, -25, -30, \*-40  
(PER ROW)

TAPE & REEL  
-TR: TAPE & REEL  
-FR: FULL REEL QTY TAPE & REEL

PIN LENGTH  
(LEAVE BLANK FOR STANDARD)  
\*H: HOT SWAP

RIGHT ANGLE

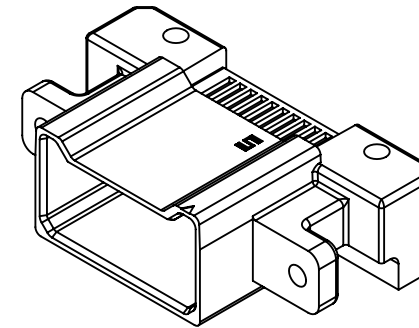
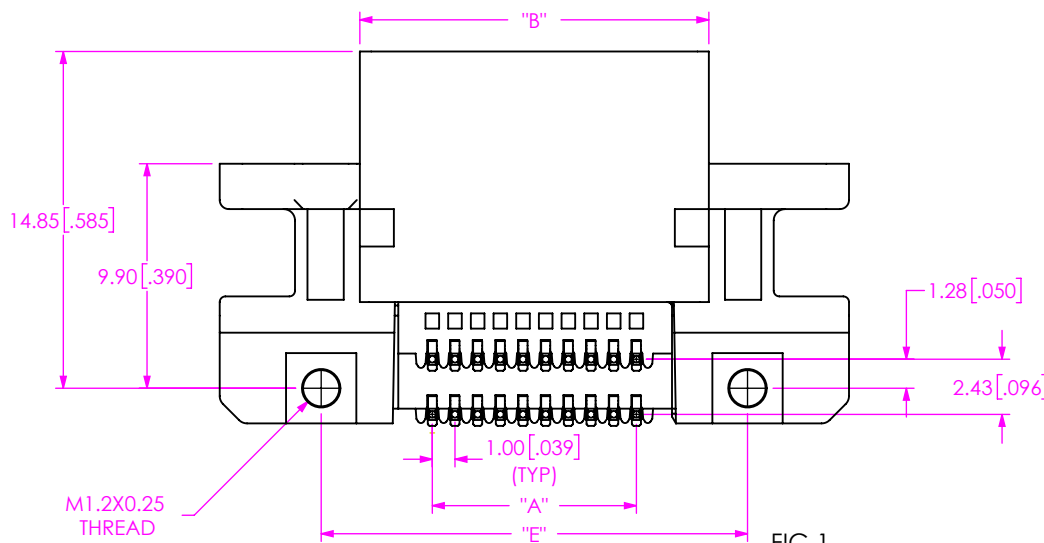
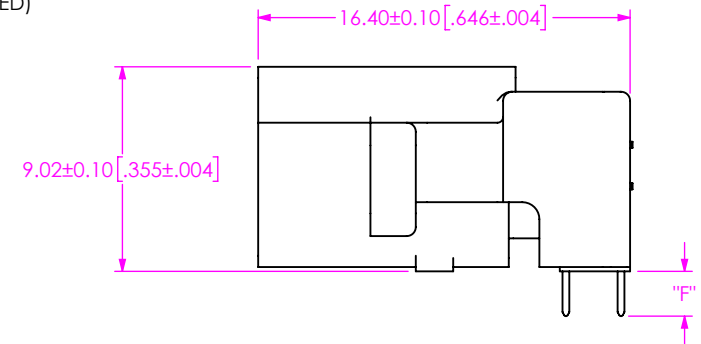
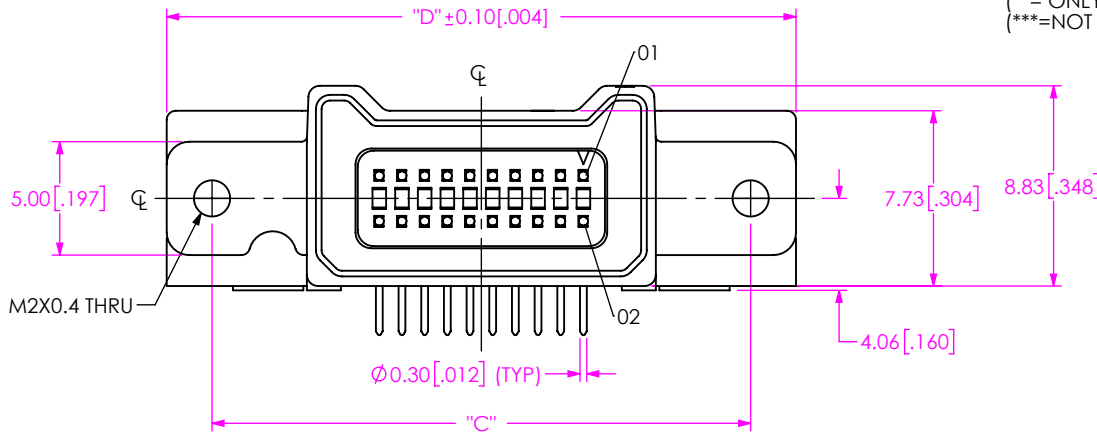
ROW SPECIFICATION  
-D: DOUBLE (USE BODY-XX-D)

PLATING SPECIFICATION  
\*\*-STL: 30µ" Au IN CONTACT AREA,  
Sn/Pb ON TAIL  
-S: 30µ" Au IN CONTACT AREA,  
MATTE TIN ON TAIL

LEAD STYLE

\*\*\*-01: SURFACE MOUNT  
\*\*\*-02: THROUGH HOLE, 1.57 PCB  
\*\*\*-03: THROUGH HOLE, 2.36 PCB  
-L1: SURFACE MOUNT (LUBRICATED)  
-L2: THROUGH HOLE, 1.57 PCB (LUBRICATED)  
-L3: THROUGH HOLE, 2.36 PCB (LUBRICATED)

(\* = NOT TOOLED)  
(\*\* = ONLY RELEASED ON -X1 LEAD STYLE)  
(\*\*\* = NOT RELEASED)



ISO VIEW

LEAD STYLE	"F"
-X2	1.98 [0.078]
-X3	2.82 [0.109]

NOTES:

1. MINIMUM PUSHOUT FORCE: 2.22N [.5 LB].
2. ORDERS WILL BE PACKAGED ACCORDING TO THE SAMTEC PACKAGING EFFICIENCY STANDARDS [SPES] FOUND ON WWW.SAMTEC.COM.
3. ATTACH LABEL -4X2 TO EACH REEL.

FIG 1  
P1M-10-02-XXX-D-RA-XR SHOWN

PROPRIETARY NOTE  
THIS DOCUMENT CONTAINS CONFIDENTIAL AND PROPRIETARY INFORMATION AND ALL DESIGN, MANUFACTURING, REPRODUCTION, USE, PATENT RIGHTS AND SALES RIGHTS ARE EXPRESSLY RESERVED BY SAMTEC, INC. THIS DOCUMENT SHALL NOT BE DISCLOSED, IN WHOLE OR PART, TO ANY UNAUTHORIZED PERSON OR ENTITY NOR REPRODUCED, TRANSFERRED OR INCORPORATED IN ANY OTHER PROJECT IN ANY MANNER WITHOUT THE EXPRESS WRITTEN CONSENT OF SAMTEC, INC.

DO NOT SCALE DRAWING  
SHEET SCALE: 1:2

MATERIAL:  
INSULATOR: LCP, COLOR: BLACK  
TERMINAL: COPPER ALLOY  
SHIELD: ZINC ALLOY, PLATING: NICKEL

**samtec**  
520 PARK EAST BLVD., NEW ALBANY, IN 47150  
PHONE: 812-944-6733 FAX: 812-948-5047  
e-Mail: info@SAMTEC.com code 55322

DESCRIPTION:  
1.00MM PITCH -RA PIN ASSEMBLY

DWG. NO.  
**P1M-XX-XX-XXX-D-RA-X-XR**

BY: G. DETHY 03/18/2021 SHEET 1 OF 2

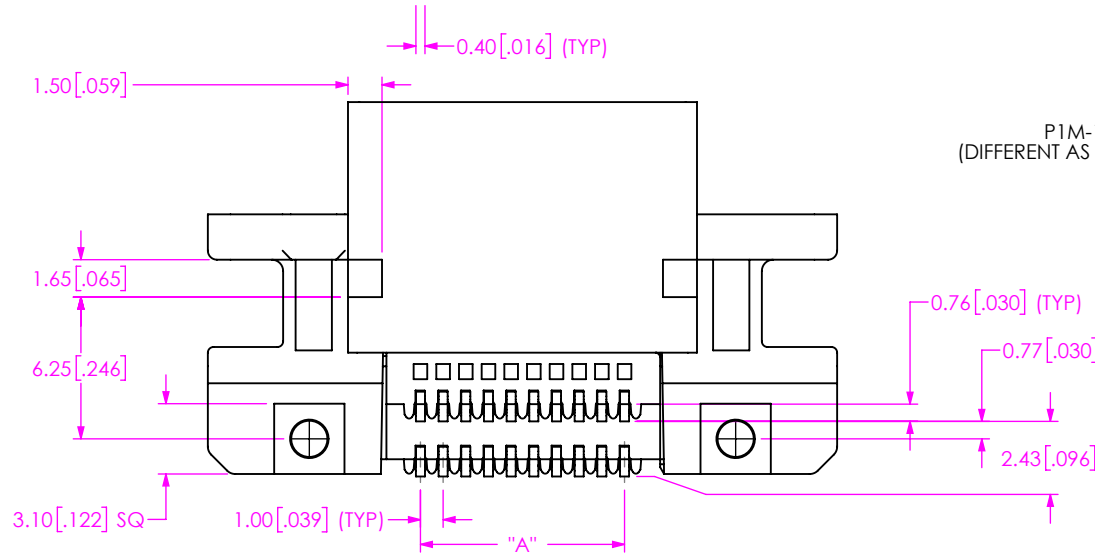
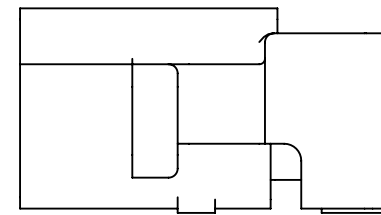
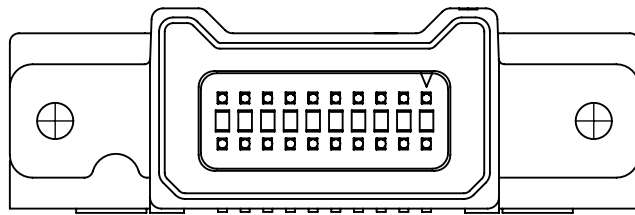
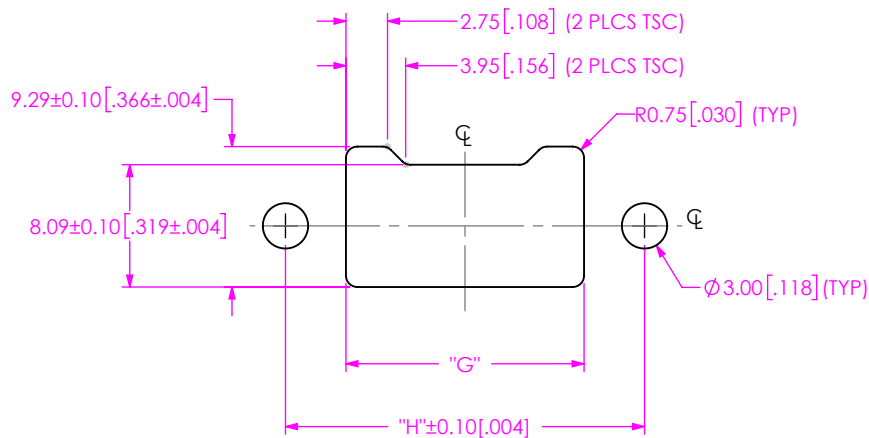


FIG 2  
P1M-10-01-XXX-D-RA-XR SHOWN  
(DIFFERENT AS SHOWN, OTHERWISE SAME AS FIG 1)



RECOMMENDED PANEL CUTOUT

No. OF POS	"G"	"H"
-04	9.75 [0.384]	17.75 [0.699]
-05	10.75 [0.423]	18.75 [0.738]
-07	12.75 [0.502]	20.75 [0.817]
-10	15.75 [0.620]	23.75 [0.935]
-15	20.75 [0.817]	28.75 [1.132]
-20	25.75 [1.014]	33.75 [1.329]
-25	30.75 [1.211]	38.75 [1.526]
-30	35.75 [1.407]	43.75 [1.722]
-40	45.75 [1.801]	53.75 [2.116]

PROPRIETARY NOTE

THIS DOCUMENT CONTAINS CONFIDENTIAL AND PROPRIETARY INFORMATION AND ALL DESIGN, MANUFACTURING, REPRODUCTION, USE, PATENT RIGHTS AND SALES RIGHTS ARE EXPRESSLY RESERVED BY SAMTEC, INC. THIS DOCUMENT SHALL NOT BE DISCLOSED, IN WHOLE OR PART, TO ANY UNAUTHORIZED PERSON OR ENTITY NOR REPRODUCED, TRANSFERRED OR INCORPORATED IN ANY OTHER PROJECT IN ANY MANNER WITHOUT THE EXPRESS WRITTEN CONSENT OF SAMTEC, INC.

SHEET SCALE: 1:2  
DO NOT SCALE DRAWING



520 PARK EAST BLVD., NEW ALBANY, IN 47150  
PHONE: 812-944-6733 FAX: 812-948-5047  
e-Mail: info@SAMTEC.com code 55322

DESCRIPTION:  
1.00MM PITCH -RA PIN ASSEMBLY

DWG. NO.  
P1M-XX-XX-XXX-D-RA-X-R

BY: G. DETHY 03/18/2021 SHEET 2 OF 2