

DO NOT SCALE FROM THIS PRINT

QMS-XXX-XX-X-D-DP-EM2-XXX-XX

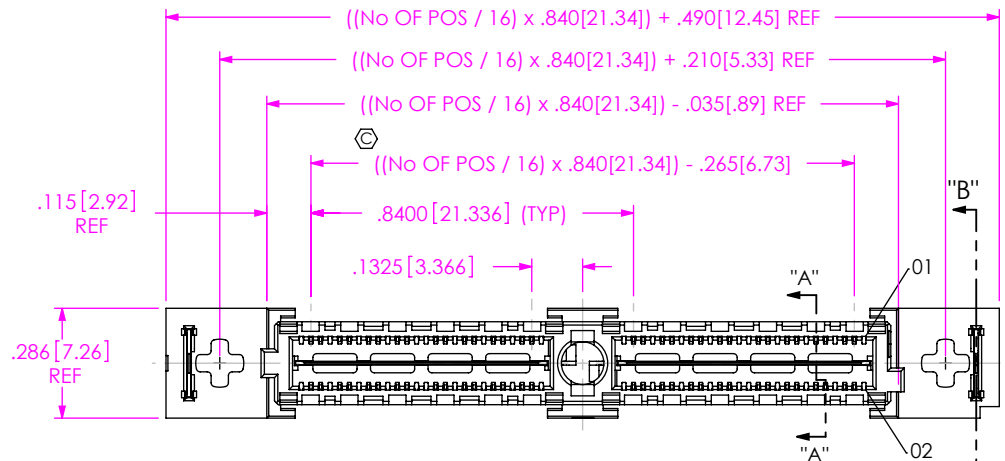
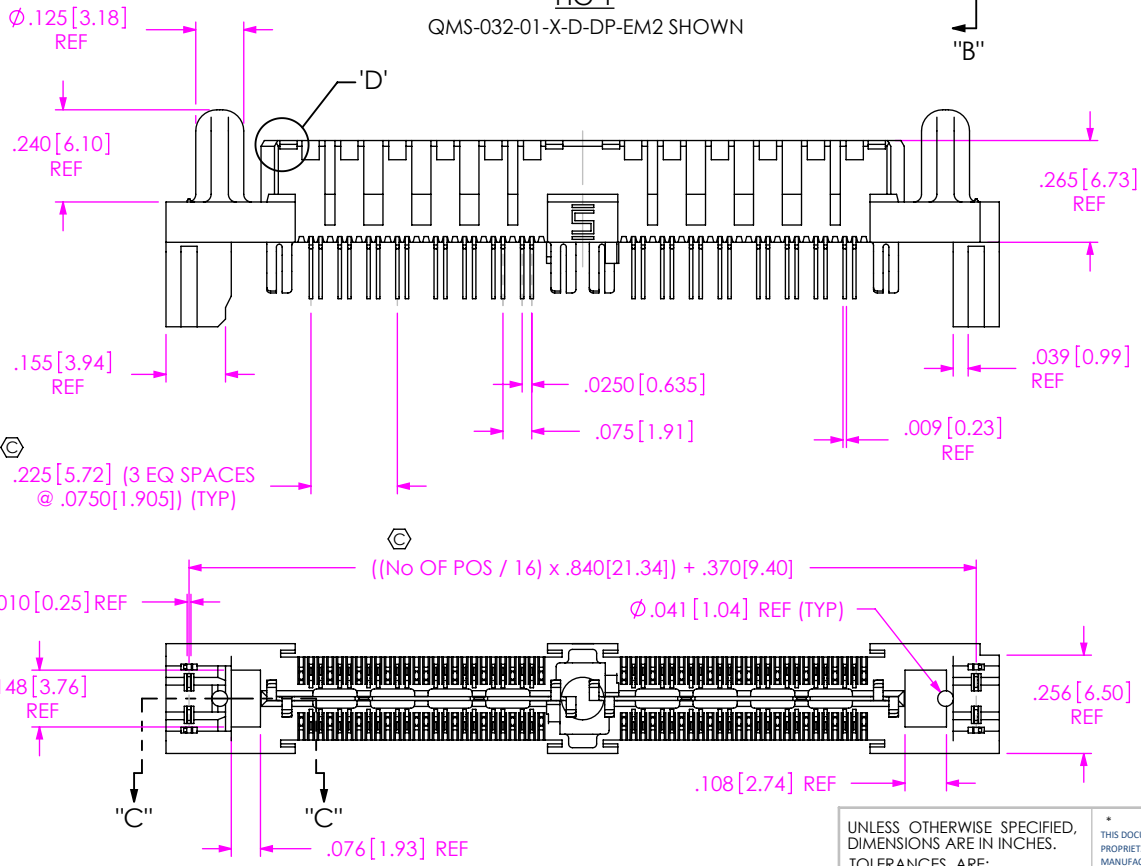


FIG 1  
QMS-032-01-X-D-DP-EM2 SHOWN



**NO. OF POSITIONS**  
-016, -032, -048, -064, \*-080 (PER ROW)

**LEAD STYLE**  
-01

**PLATING SPECIFICATION**  
-L: LIGHT GOLD (USE T-1M25-01-L)  
-H: HEAVY GOLD (USE T-1M25-01-H)  
[ALL PLATING STYLES USE T-1G22-01-G & WT-17-01-GF]

**PACKAGING** (SEE NOTES 8 & 9)  
BLANK: TRAY (SEE NOTE 7)  
-TR: TAPE AND REEL PACKAGING (-016 & -032 WITH NO OPTIONS) (-016 & -032 WITH -PC4) (-016 WITH -PC8)  
-FR: FULL REEL QTY TAPE AND REEL (-016 & -032 WITH NO OPTIONS) (-016 & -032 WITH -PC4) (-016 WITH -PC8)

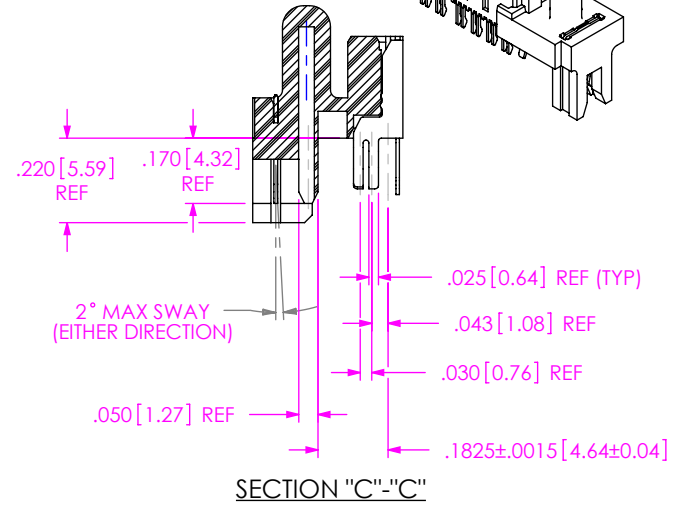
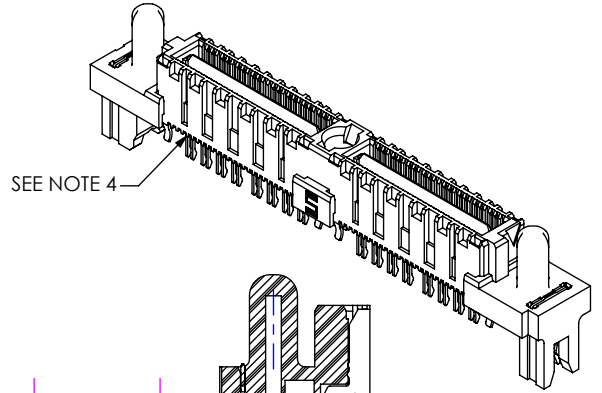
**POWER COMBO OPTION**  
-PC4: 4 POWER POS PER END  
-PC8: 8 POWER POS PER END (SEE FIG 2, SHEET 3)  
[-PCX AVAILABLE ON POSITIONS -016, -032 & -048 ONLY]

**EM2: EDGE MOUNT**

**-DP: DIFFERENTIAL PAIRS**

**ROW SPECIFICATION**  
-D: DOUBLE

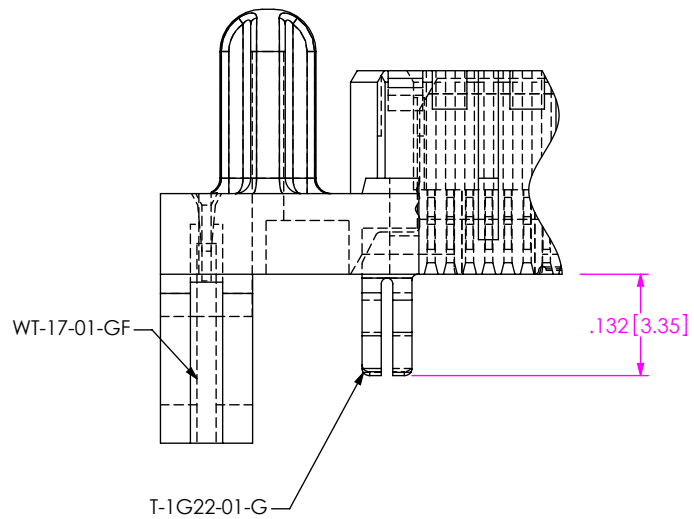
\* = NOT TOOLED



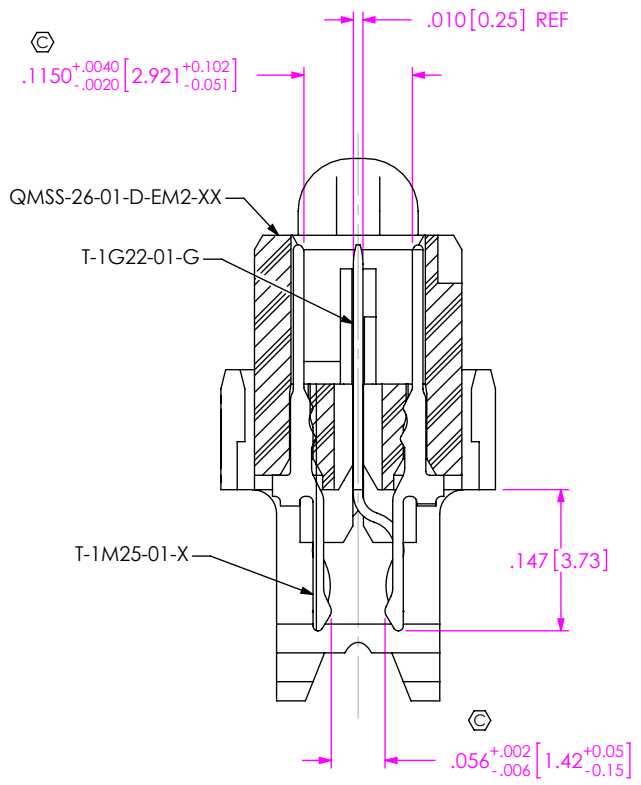
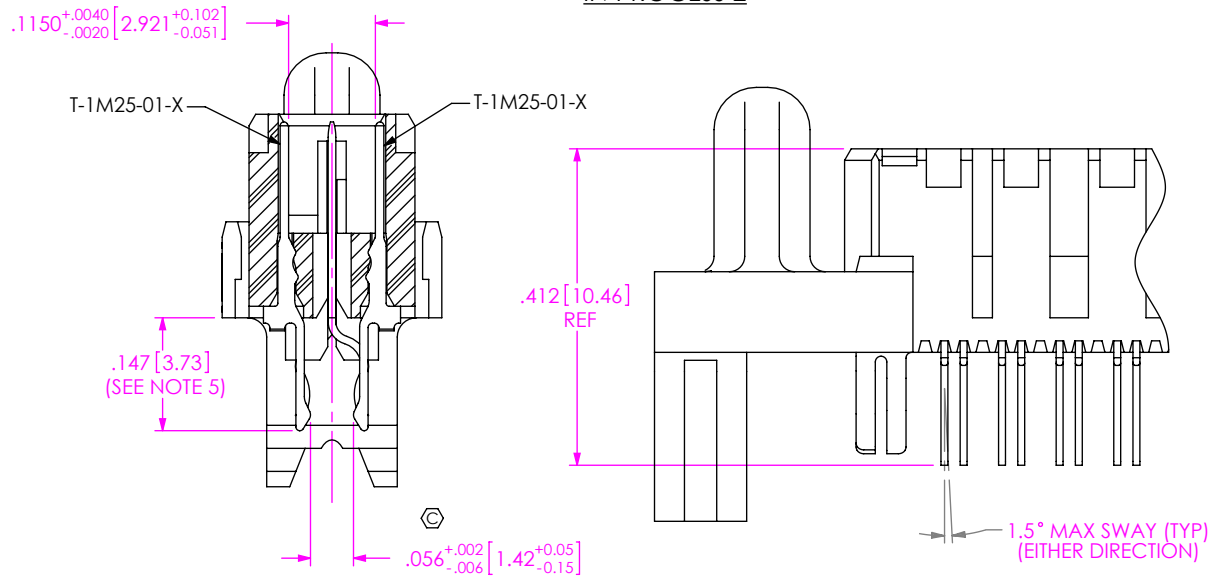
- NOTES:
- ⊕ REPRESENTS A CRITICAL DIMENSION.
  - BURR ALLOWANCE: .0015[0.038] MAX.
  - MINIMUM PUSHOUT FORCE: SIGNAL: .5 LB, GROUND: 1 LB.
  - TERMINALS IN ALL POSITIONS TO BE SHEARED.
  - MAX VARIANCE OF .002[0.05].
  - DIMENSION APPLIES TO GROUND PLANE & SIGNAL PINS.
  - PARTS TO BE PACKAGED IN TRAYS AS STANDARD.
  - ORDERS WILL BE PACKAGED ACCORDING TO THE SAMTEC PACKAGING EFFICIENCY STANDARDS (SPES) FOUND ON WWW.SAMTEC.COM
  - ATTACH LABEL TO EACH REEL

UNLESS OTHERWISE SPECIFIED, DIMENSIONS ARE IN INCHES. TOLERANCES ARE: DECIMALS      ANGLES .XX: ±.01 [.3]      2° .XXX: ±.005 [.13] .XXXX: ±.0020 [.051]	* PROPRIETARY NOTE THIS DOCUMENT CONTAINS CONFIDENTIAL AND PROPRIETARY INFORMATION AND ALL DESIGN, MANUFACTURING, REPRODUCTION, USE, PATENT RIGHTS AND SALES RIGHTS ARE EXPRESSLY RESERVED BY SAMTEC, INC. THIS DOCUMENT SHALL NOT BE DISCLOSED, IN WHOLE OR PART, TO ANY UNAUTHORIZED PERSON OR ENTITY NOR REPRODUCED, TRANSFERRED OR INCORPORATED IN ANY OTHER PROJECT IN ANY MANNER WITHOUT THE EXPRESS WRITTEN CONSENT OF SAMTEC, INC.	520 PARK EAST BLVD, NEW ALBANY, IN 47150 PHONE: 812-944-6733      FAX: 812-948-5047 e-Mail: info@SAMTEC.com      code: 55322

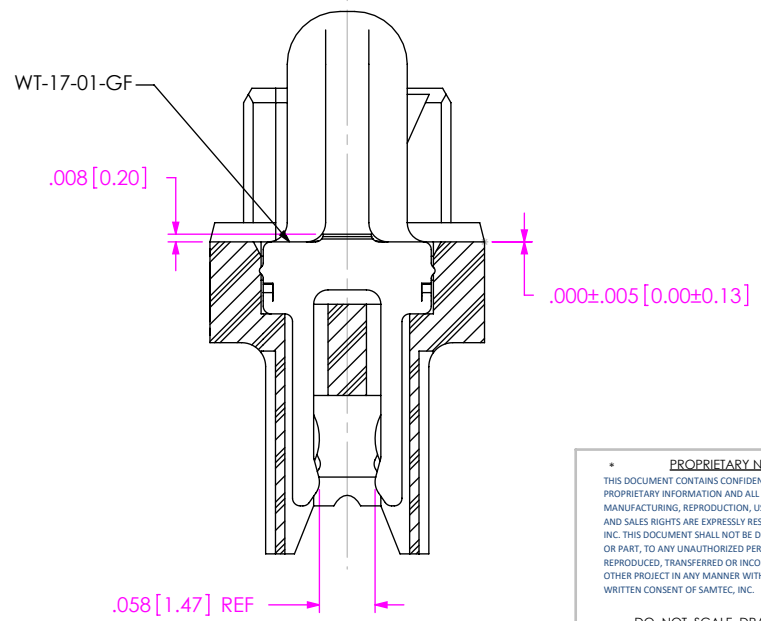
IN-PROCESS 1



IN-PROCESS 2

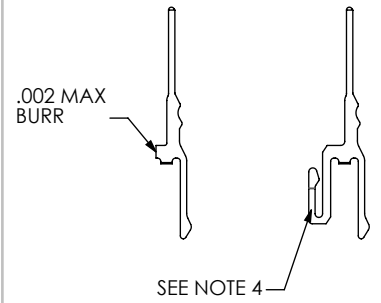


SECTION "A"-"A"  
SCALE 5 : 1



SECTION "B"-"B"  
SCALE 5 : 1

TERMINAL DETAILS



**PROPRIETARY NOTE**  
THIS DOCUMENT CONTAINS CONFIDENTIAL AND PROPRIETARY INFORMATION AND ALL DESIGN, MANUFACTURING, REPRODUCTION, USE, PATENT RIGHTS AND SALES RIGHTS ARE EXPRESSLY RESERVED BY SAMTEC, INC. THIS DOCUMENT SHALL NOT BE DISCLOSED, IN WHOLE OR PART, TO ANY UNAUTHORIZED PERSON OR ENTITY NOR REPRODUCED, TRANSFERRED OR INCORPORATED IN ANY OTHER PROJECT IN ANY MANNER WITHOUT THE EXPRESS WRITTEN CONSENT OF SAMTEC, INC.

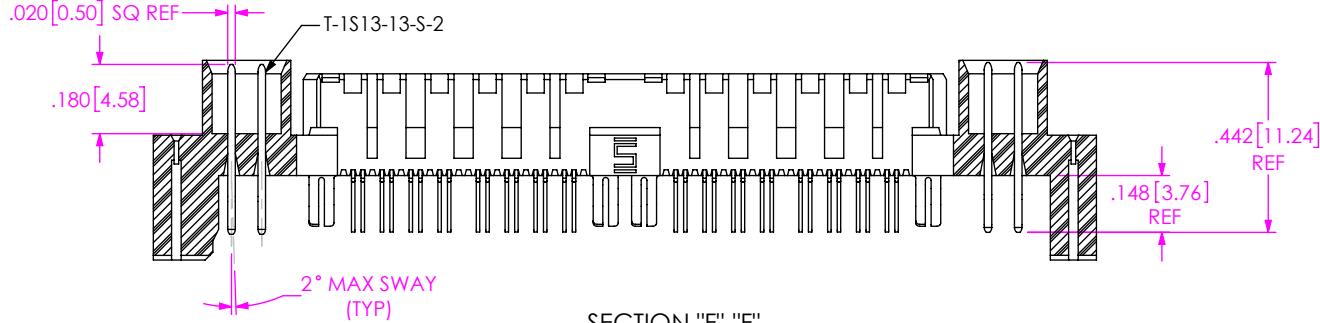
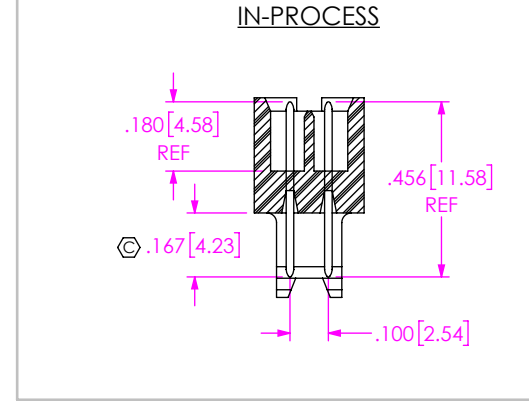
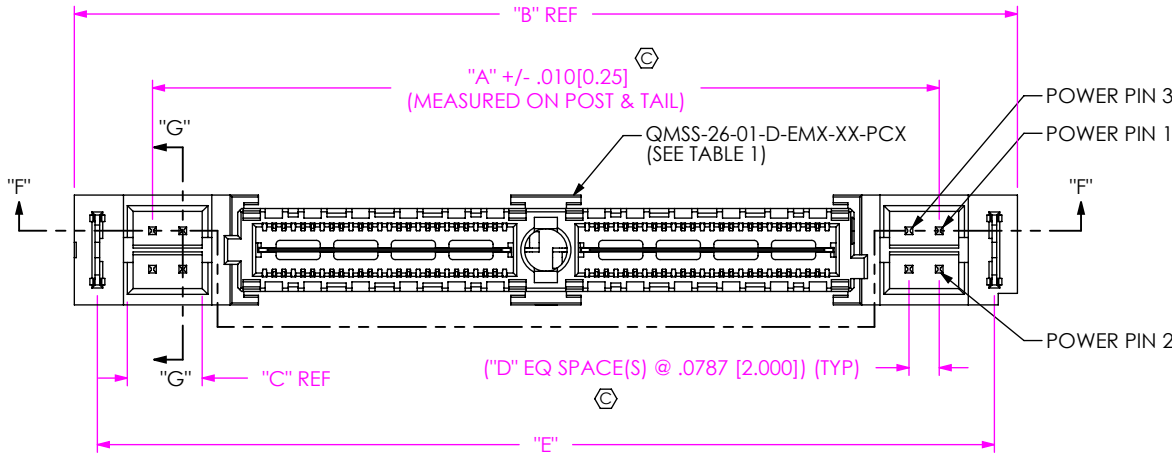
DO NOT SCALE DRAWING  
SHEET SCALE: 2.5:1



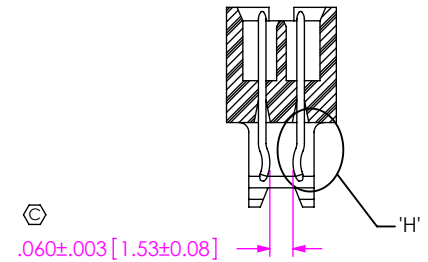
520 PARK EAST BLVD, NEW ALBANY, IN 47150  
PHONE: 812-944-6733 FAX: 812-948-5047  
e-Mail: info@SAMTEC.com code: 55322

DESCRIPTION:  
.635mm DOUBLE ROW EDGE MOUNT TERMINAL STRIP  
DWG. NO.  
QMS-XXX-XX-X-D-DP-EM2-XXX-XX  
BY: DEAN P 2/24/2004 SHEET 2 OF 3

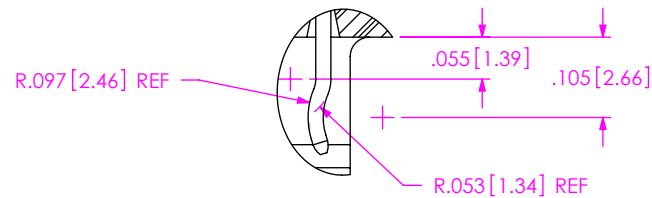
FIG 2 -PCX OPTION  
 QMS-032-01-X-D-DP-EM2-PC4 SHOWN  
 [DIFFERENT AS SHOWN, OTHERWISE SAME AS FIG 1]



SECTION "F"-"F"  
 SCALE 2 : 1



SECTION "G"-"G"  
 SCALE 2 : 1



DETAIL "H"  
 SCALE 4 : 1

TABLE 1

ASSEMBLY	USE BODY	"A"	"B"	"C"	"D"	"E"
QMS-016-01-X-D-DP-EM2-PC4	QMSS-26-01-D-EM2-01-PC4	1.209 [30.70]	1.616 [41.05]	.180 [4.57]	1	1.496 [38.00]
QMS-016-01-X-D-DP-EM2-PC8	QMSS-26-01-D-EM2-01-PC8	1.524 [38.70]	1.931 [49.05]	.337 [8.57]	3	1.811 [46.00]
QMS-032-01-X-D-DP-EM2-PC4	QMSS-26-01-D-EM2-02-PC4	2.049 [52.04]	2.456 [62.38]	.180 [4.57]	1	2.336 [59.34]
QMS-032-01-X-D-DP-EM2-PC8	QMSS-26-01-D-EM2-02-PC8	2.364 [60.04]	2.771 [70.38]	.337 [8.57]	3	2.651 [61.34]
QMS-048-01-X-D-DP-EM2-PC4	QMSS-26-01-D-EM2-03-PC4	2.889 [73.37]	3.296 [83.72]	.180 [4.57]	1	3.176 [80.67]
QMS-048-01-X-D-DP-EM2-PC8	QMSS-26-01-D-EM2-03-PC8	3.204 [81.37]	3.611 [91.72]	.337 [8.57]	3	3.491 [88.67]

F:\DWG\MISC\MKTG\QMS-XXX-XX-X-D-DP-EM2-XXX-XX-MKT.SLDDRW

PROPRIETARY NOTE

THIS DOCUMENT CONTAINS CONFIDENTIAL AND PROPRIETARY INFORMATION AND ALL DESIGN, MANUFACTURING, REPRODUCTION, USE, PATENT RIGHTS AND SALES RIGHTS ARE EXPRESSLY RESERVED BY SAMTEC, INC. THIS DOCUMENT SHALL NOT BE DISCLOSED, IN WHOLE OR PART, TO ANY UNAUTHORIZED PERSON OR ENTITY NOR REPRODUCED, TRANSFERRED OR INCORPORATED IN ANY OTHER PROJECT IN ANY MANNER WITHOUT THE EXPRESS WRITTEN CONSENT OF SAMTEC, INC.

DO NOT SCALE DRAWING

SHEET SCALE: 2.5:1



520 PARK EAST BLVD, NEW ALBANY, IN 47150  
 PHONE: 812-944-6733 FAX: 812-948-5047  
 e-Mail: info@SAMTEC.com code: 55322

DESCRIPTION:  
 .635mm DOUBLE ROW EDGE MOUNT TERMINAL STRIP

DWG. NO.  
 QMS-XXX-XX-X-D-DP-EM2-XXX-XX

BY: DEAN P 2/24/2004 SHEET 3 OF 3